



**CITY OF DETROIT  
DEPARTMENT OF PUBLIC WORKS  
CITY ENGINEERING DIVISION**

**COLEMAN A. YOUNG MUNICIPAL CENTER  
2 WOODWARD AVE. SUITE 601  
DETROIT, MICHIGAN 48226  
PHONE: (313) 224-3949 TTY: 711  
WWW.DETROITMI.GOV**

---

To: Clerk's Office  
From: The Department of Public Works  
City Engineering Division  
MapsandRecordsBureau@DetroitMI.Gov  
(313) 224-3970

Petitioner:  
Neighborhood Development Corporation  
500 Griswold, Suite 2200  
Detroit, MI 48226

On behalf of the above-mentioned petitioner the Department of Public Works: City Engineering Division is submitting a petition request for the below mentioned action. The petitioner has received a project consultation from the Department of Public Works: City Engineering Division and has been advised the following:

Type of action recommended:

Outright vacation of the north/south public alley and the east/west public alley bounded by Lisette St., Montclair St., Freud St., and Meadowbrook St, for a community redevelopment project.

Georgine Gersdorff  
Manager II  
Department of Public Works  
City Engineering Division  
313-224-3985



CITY OF DETROIT  
DEPARTMENT OF PUBLIC WORKS  
CITY ENGINEERING DIVISION

COLEMAN A. YOUNG MUNICIPAL CENTER  
2 WOODWARD AVE. SUITE 601  
DETROIT, MICHIGAN 48226  
PHONE: (313) 224-3949 TTY: 711  
WWW.DETROITMI.GOV



August 12, 2024

Honorable Detroit City Council  
C/o Detroit City Clerk  
200 Coleman A. Young Municipal Center  
2 Woodward Avenue  
Detroit, Michigan 48226

RE: Giffels Webster – Request to vacate the north/south alley and the east/west alley bounded by Lisette Street (60 feet wide), Montclair Street (60 feet wide), Freud Street (60 feet wide), and Meadowbrook Street (60 feet wide).

Giffels Webster, 28 W. Adams, Suite 1200, Detroit, Michigan 48226 on behalf of the Neighborhood Development Corporation, 500 Griswold, Suite 2200, Detroit, MI 48226, respectfully requests the following outright vacation of the north/south alley between Meadowbrook Street and Montclair Street and the east/west alley between Lisette Street and Freud Street, in the City of Detroit.

- Vacation of the north/south and east/west alley bounded by the above referenced roadway segments for the development of a neighborhood park. Refer to the attached sketch for further clarification.

The requested alley vacation is a critical part of the Jefferson Village Park redevelopment project. Please refer to the attached detailed sketch for further clarification of the alley vacation.

If you should have any questions, please do not hesitate to contact me at (P) 313.962.4442 (M) 248.318.7988 or at [tthomas@giffelswebster.com](mailto:tthomas@giffelswebster.com).

Respectfully,

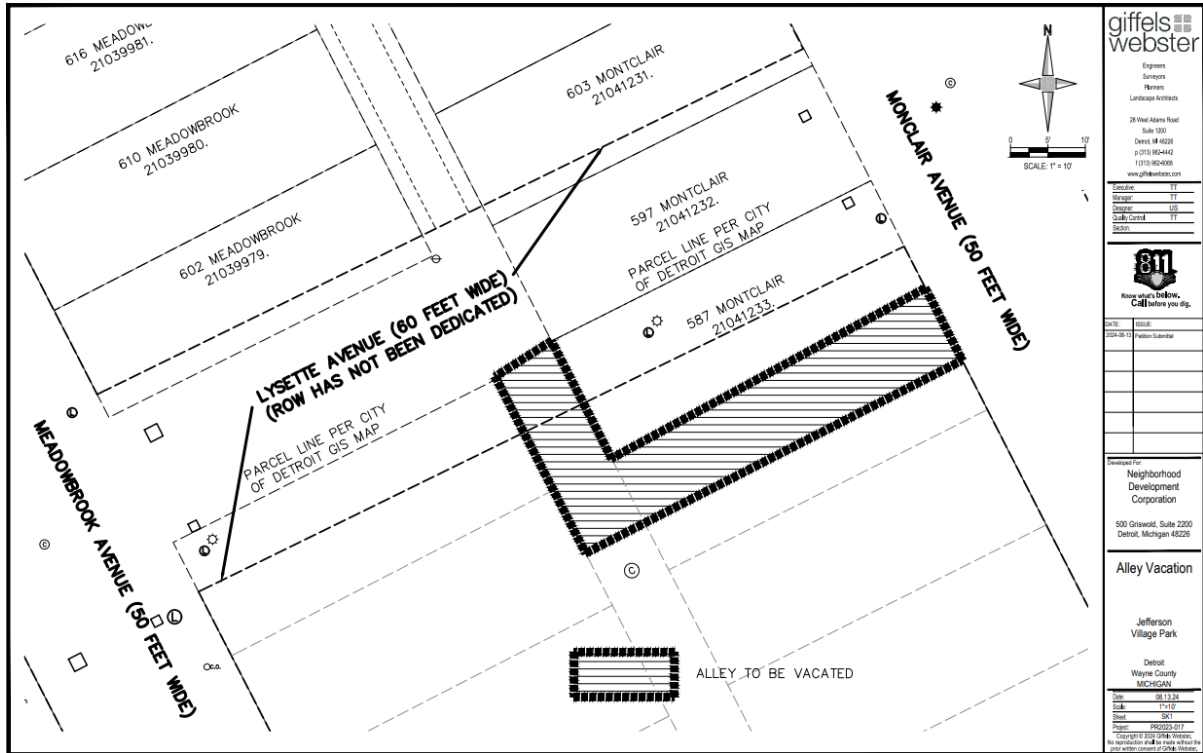
Terence Thomas  
Senior Project Manager  
Giffels Webster

attachment



CITY OF DETROIT  
DEPARTMENT OF PUBLIC WORKS  
CITY ENGINEERING DIVISION

COLEMAN A. YOUNG MUNICIPAL CENTER  
2 WOODWARD AVE. SUITE 601  
DETROIT, MICHIGAN 48226  
PHONE: (313) 224-3949 TTY: 711  
WWW.DETROITMI.GOV





CITY OF DETROIT  
DEPARTMENT OF PUBLIC WORKS  
CITY ENGINEERING DIVISION

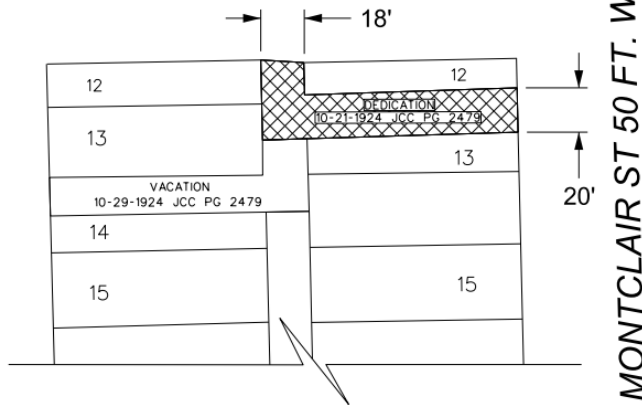
COLEMAN A. YOUNG MUNICIPAL CENTER  
2 WOODWARD AVE. SUITE 601  
DETROIT, MICHIGAN 48226  
PHONE: (313) 224-3949 TTY: 711  
WWW.DETROITMI.GOV

MAP-24-125

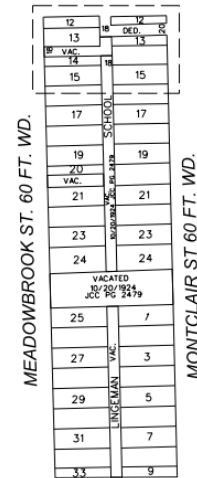


MEADOWBROOK ST. 50 FT. WD.

LISETTE ST. 60 FT. WD.



LISETTE ST. 60 FT. WD.



FREUD ST. 60 FT. WD.



- REQUEST OUTRIGHT VACATION

(FOR OFFICE USE ONLY)

CARTO 54 B

B				
A				
DESCRIPTION				
REVISIONS				
DRAWN BY	AP	CHECKED	LC	
DATE	08-15-2024	APPROVED	RW	

REQUEST TO OUTRIGHT VACATE  
THE EAST/WEST ALLEY BOUNDED  
BY LISETTE ST., MONTCLAIR ST.,  
FREUD ST., AND MEADOWBROOK ST.

CITY OF DETROIT	
CITY ENGINEERING DIVISION	
SURVEY BUREAU	
JOB NO.	24-125
DRWG. NO.	



**CITY OF DETROIT**  
**DEPARTMENT OF PUBLIC WORKS**  
**CITY ENGINEERING DIVISION**

**COLEMAN A. YOUNG MUNICIPAL CENTER**  
**2 WOODWARD AVE. SUITE 601**  
**DETROIT, MICHIGAN 48226**  
**PHONE: (313) 224-3949 TTY: 711**  
**[WWW.DETROITMI.GOV](http://WWW.DETROITMI.GOV)**

---