



CITY OF DETROIT
DEPARTMENT OF PUBLIC WORKS
CITY ENGINEERING DIVISION

COLEMAN A. YOUNG MUNICIPAL CENTER
2 WOODWARD AVE. SUITE 601
DETROIT, MICHIGAN 48226
PHONE: (313) 224-3949 TTY: 711
WWW.DETROITMI.GOV

To: Clerk's Office
From: The Department of Public Works
City Engineering Division
MapsandRecordsBureau@DetroitMI.Gov
(313) 224-3970

Petitioner:
Downtown Detroit Partnership
1000 Woodward Ave.
Suite 380
Detroit, MI 48226

On behalf of the above-mentioned petitioner the Department of Public Works: City Engineering Division is submitting a petition request for the below mentioned action. The petitioner has received a project consultation from the Department of Public Works: City Engineering Division and has been advised the following:

Type of action recommended:

Petition to request vacation of Campus Martius Park with the reservation of a utility easement.

Georgine Gersdorff
Manager II
Department of Public Works
City Engineering Division
313-224-3985



CITY OF DETROIT
DEPARTMENT OF PUBLIC WORKS
CITY ENGINEERING DIVISION

COLEMAN A. YOUNG MUNICIPAL CENTER
2 WOODWARD AVE. SUITE 601
DETROIT, MICHIGAN 48226
PHONE: (313) 224-3949 TTY: 711
WWW.DETROITMI.GOV



December 5, 2024

Honorable Detroit City Council
C/o Detroit City Clerk
200 Coleman A. Young Municipal Center
2 Woodward Avenue
Detroit, Michigan 48226

RE: Giffels Webster - Petition requesting vacation of public rights-of-way.

Giffels Webster, 28 W. Adams, Suite 1200, Detroit, Michigan 48226 on behalf of Downtown Detroit Partnership, 1000 Woodward Avenue (One Campus Martius), Suite 380, Detroit, MI 48226, respectfully requests the following vacation into the public right-of-way for Campus Martius Park which is located at the intersections of: Woodward Avenue and Michigan Avenue to the northwest, Fort Street and Woodward Avenue to the southwest, and Cadillac Square and Monroe Street to the northeast.

- Proposed vacation for Campus Martius Park which is an oval shape with a length of 395.98' and a width of 184.00'. Park limits are such:
 - 58.84' south of the north public right-of-way
 - 56.22' west from the east public right-of-way north of Cadillac Square
 - 55.39' west from the east public right-of-way south of Cadillac Square
 - 69.00' north of the south public right-of-way
 - 52.56' east of the west public right-of-way south of Michigan Avenue
 - 85.64' east of the west public right-of-way north of Michigan Avenue

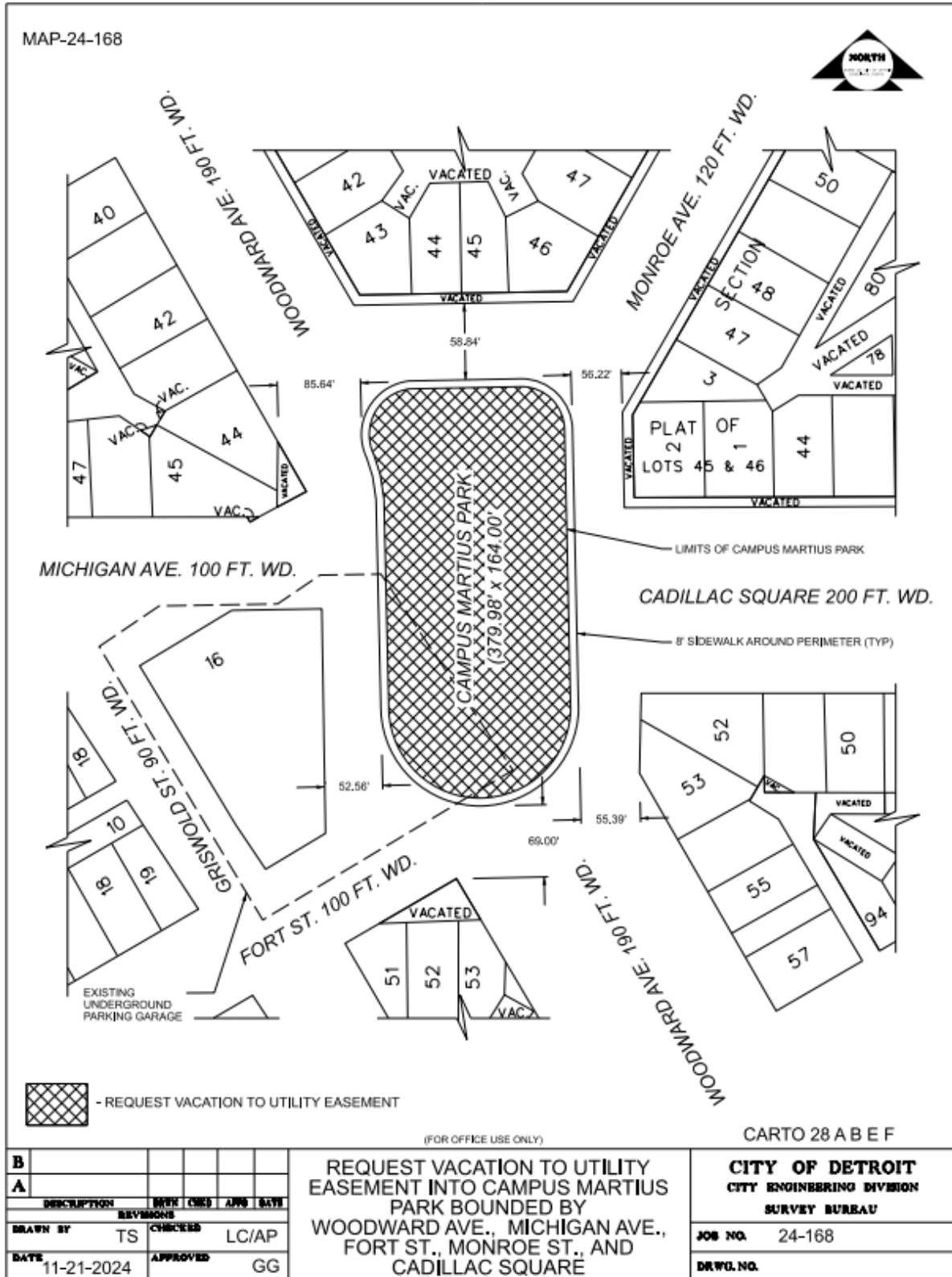
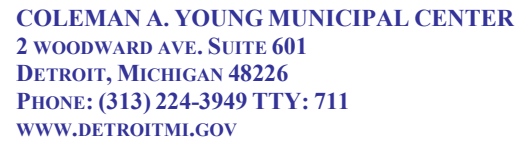
Approximate limits of the vacation can be found in the attachment, enclosed herein.

Giffels Webster has been asked to facilitate the requested vacation. We will be working with the city of Detroit's Department of Public Works – Civil Engineering Division, and all stakeholders to achieve a vacation that is satisfactory to all interested parties.

If you should have any questions, please do not hesitate to contact me at (P) 313.962.4442, or at tyaseen@giffelswebster.com or Michael G. Darga, PE at (P) 313.962.4442 or mdarga@giffelswebster.com.

Respectfully,

Teba Yaseen
Staff Engineer





CITY OF DETROIT
DEPARTMENT OF PUBLIC WORKS
CITY ENGINEERING DIVISION

COLEMAN A. YOUNG MUNICIPAL CENTER
2 WOODWARD AVE. SUITE 601
DETROIT, MICHIGAN 48226
PHONE: (313) 224-3949 TTY: 711
WWW.DETROITMI.GOV

