

Janice M. Winfrey  
City Clerk

**City of Detroit**  
OFFICE OF THE CITY CLERK

Andre P. Gilbert II  
Deputy City Clerk

**DEPARTMENT PETITION REFERENCE COMMUNICATION**

*To: The Department or Commission Listed Below*

*From: Janice M Winfrey, Detroit City Clerk*

---

The following petition is herewith referred to you for report and recommendation to the City Council.

In accordance with that body's directive, kindly return the same with your report in duplicate within four (4) weeks.

---

Petition No.	2024-412
Name of Petitioner	Downtown Detroit Partnership
Description of Petition	Please see petition to request vacation of Campus Martius Park with the reservation of a utility easement.
Type of Petition	<b>Alley Vacation/ Encroachment/ Utility Vacation</b>
Submission Date	12/19/24
Concerned Departments	Department of Public Works, City Engineering Division, Planning and Development Division
Petitioner Contact	Downtown Detroit Partnership 1000 Woodward Ave. Suite 380 Detroit, MI 48226



**CITY OF DETROIT  
DEPARTMENT OF PUBLIC WORKS  
CITY ENGINEERING DIVISION**

**COLEMAN A. YOUNG MUNICIPAL CENTER  
2 WOODWARD AVE. SUITE 601  
DETROIT, MICHIGAN 48226  
PHONE: (313) 224-3949 TTY: 711  
WWW.DETROITMI.GOV**

---

To: Clerk's Office  
From: The Department of Public Works  
City Engineering Division  
MapsandRecordsBureau@DetroitMI.Gov  
(313) 224-3970

Petitioner:  
Downtown Detroit Partnership  
1000 Woodward Ave.  
Suite 380  
Detroit, MI 48226

On behalf of the above-mentioned petitioner the Department of Public Works: City Engineering Division is submitting a petition request for the below mentioned action. The petitioner has received a project consultation from the Department of Public Works: City Engineering Division and has been advised the following:

Type of action recommended:

Petition to request vacation of Campus Martius Park with the reservation of a utility easement.

Georgine Gersdorff  
Manager II  
Department of Public Works  
City Engineering Division  
313-224-3985



CITY OF DETROIT  
DEPARTMENT OF PUBLIC WORKS  
CITY ENGINEERING DIVISION

COLEMAN A. YOUNG MUNICIPAL CENTER  
2 WOODWARD AVE. SUITE 601  
DETROIT, MICHIGAN 48226  
PHONE: (313) 224-3949 TTY: 711  
WWW.DETROITMI.GOV



December 5, 2024

Honorable Detroit City Council  
C/o Detroit City Clerk  
200 Coleman A. Young Municipal Center  
2 Woodward Avenue  
Detroit, Michigan 48226

RE: Giffels Webster - Petition requesting vacation of public rights-of-way.

Giffels Webster, 28 W. Adams, Suite 1200, Detroit, Michigan 48226 on behalf of Downtown Detroit Partnership, 1000 Woodward Avenue (One Campus Martius), Suite 380, Detroit, MI 48226, respectfully requests the following vacation into the public right-of-way for Campus Martius Park which is located at the intersections of: Woodward Avenue and Michigan Avenue to the northwest, Fort Street and Woodward Avenue to the southwest, and Cadillac Square and Monroe Street to the northeast.

- Proposed vacation for Campus Martius Park which is an oval shape with a length of 395.98' and a width of 184.00'. Park limits are such:
  - 58.84' south of the north public right-of-way
  - 56.22' west from the east public right-of-way north of Cadillac Square
  - 55.39' west from the east public right-of-way south of Cadillac Square
  - 69.00' north of the south public right-of-way
  - 52.56' east of the west public right-of-way south of Michigan Avenue
  - 85.64' east of the west public right-of-way north of Michigan Avenue

Approximate limits of the vacation can be found in the attachment, enclosed herein.

Giffels Webster has been asked to facilitate the requested vacation. We will be working with the city of Detroit's Department of Public Works – Civil Engineering Division, and all stakeholders to achieve a vacation that is satisfactory to all interested parties.

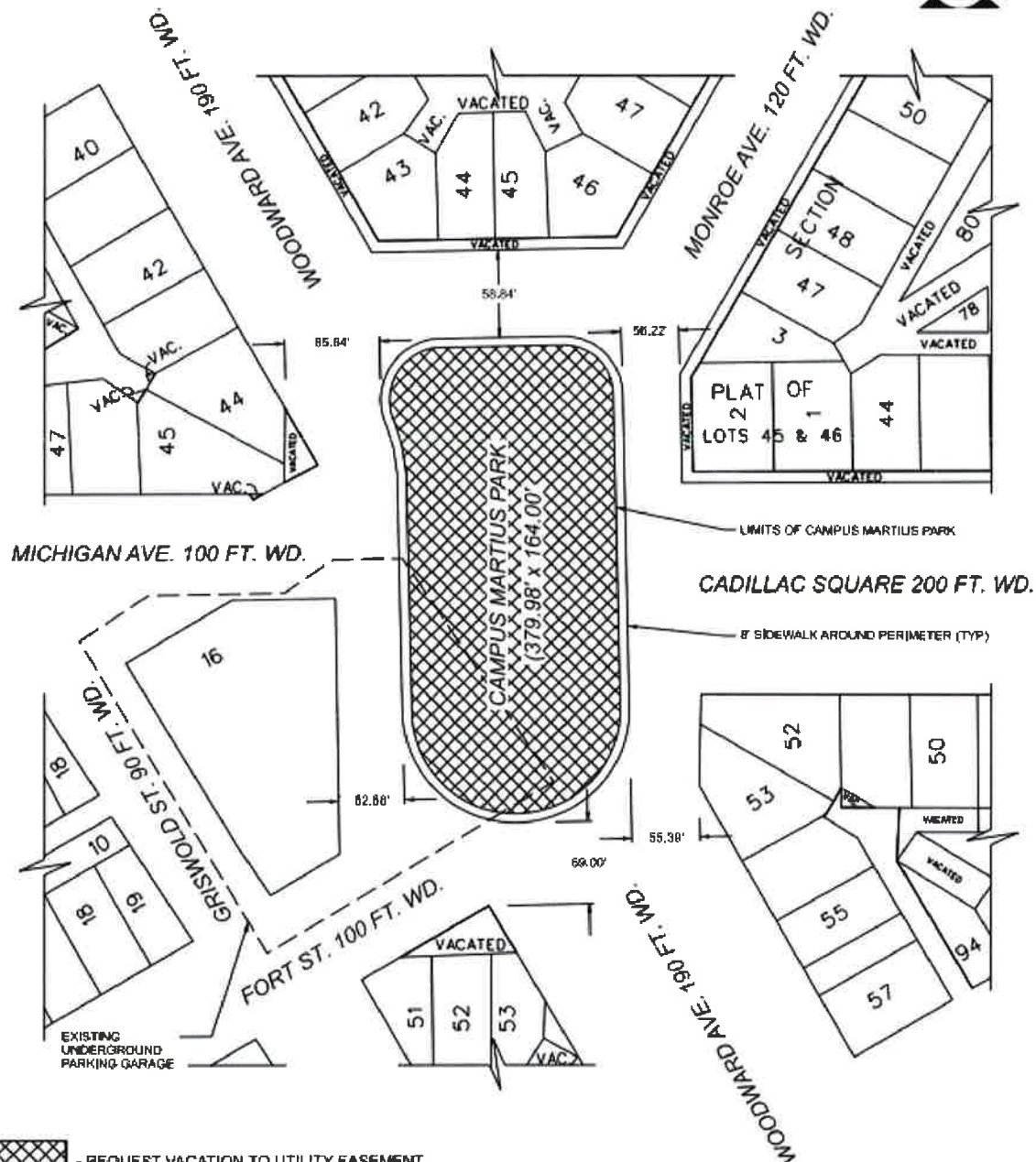
If you should have any questions, please do not hesitate to contact me at (P) 313.962.4442, or at [tyaseen@giffelswebster.com](mailto:tyaseen@giffelswebster.com) or Michael G. Darga, PE at (P) 313.962.4442 or [mdarga@giffelswebster.com](mailto:mdarga@giffelswebster.com).

Respectfully,

Teba Yaseen  
Staff Engineer



MAP-24-168



(FOR OFFICE USE ONLY)

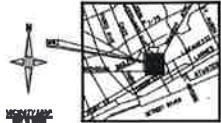
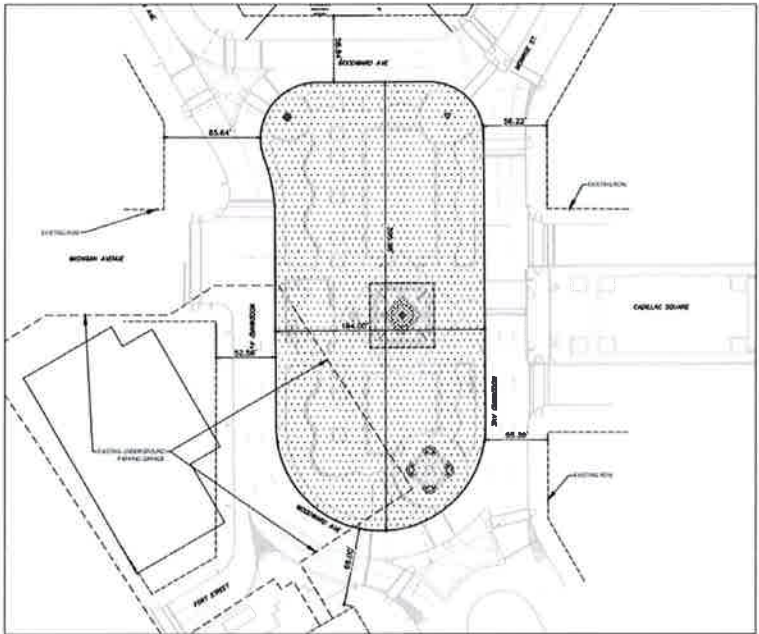
CARTO 28 A B E F

B								REQUEST VACATION TO UTILITY EASEMENT INTO CAMPUS MARTIUS PARK BOUNDED BY WOODWARD AVE., MICHIGAN AVE., FORT ST., MONROE ST., AND CADILLAC SQUARE				CITY OF DETROIT CITY ENGINEERING DIVISION SURVEY BUREAU			
A															
DESCRIPTION				DATE CHG		APPR DATE									
REVISIONS															
DRAWN BY				TS		CHECKED		LC/AP		JOB NO. 24-168					
DATE				11-21-2024		APPROVED		GG		DRAWING NO.					



CITY OF DETROIT  
DEPARTMENT OF PUBLIC WORKS  
CITY ENGINEERING DIVISION

COLEMAN A. YOUNG MUNICIPAL CENTER  
2 WOODWARD AVE. SUITE 601  
DETROIT, MICHIGAN 48226  
PHONE: (313) 224-3949 TTY: 711  
WWW.DETROITMI.GOV



**LEGEND**  
[Stippled Pattern] PROPOSED ENCROACHMENT FOR CAMPUS MARTIUS PARK  
[Dashed Line] RIGHT-OF-WAY

**giffels  
webster**  
Engineers Surveyors Planners  
Landscape Architects

Campus Martius Park - Encroachment  
2024-11-15

