



**CITY OF DETROIT
DEPARTMENT OF PUBLIC WORKS
CITY ENGINEERING DIVISION**

**COLEMAN A. YOUNG MUNICIPAL CENTER
2 WOODWARD AVE. SUITE 601
DETROIT, MICHIGAN 48226
PHONE: (313) 224-3949 TTY: 711
WWW.DETROITMI.GOV**

To: Clerk's Office
From: The Department of Public Works
City Engineering Division
MapsandRecordsBureau@DetroitMI.Gov
(313) 224-3970

Petitioner:
DPW City Engineering
2 Woodward Ave., Suite 642
Detroit, MI 48226

On behalf of the above-mentioned petitioner the Department of Public Works: City Engineering Division is submitting a petition request for the below mentioned action. The petitioner has received a project consultation from the Department of Public Works: City Engineering Division and has been advised the following:

Type of action recommended:

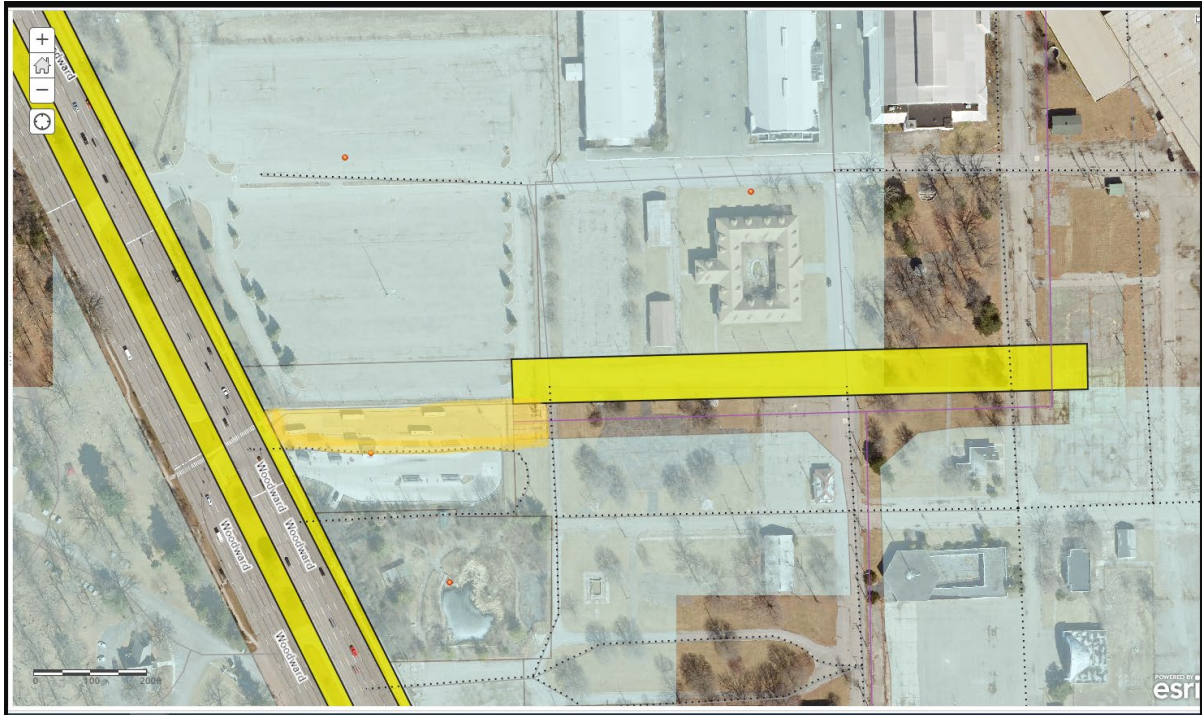
Petition for dedication of public street, West Remington Ave. between West State Fair Ave., Woodward Ave., West Eight Mile Rd., and the G.T.R.R. ROW for purposes of ingress and egress of new warehouse facility to the east.

Georgine Gersdorff
Manager II
Department of Public Works
City Engineering Division
313-224-3985



CITY OF DETROIT
DEPARTMENT OF PUBLIC WORKS
CITY ENGINEERING DIVISION

COLEMAN A. YOUNG MUNICIPAL CENTER
2 WOODWARD AVE. SUITE 601
DETROIT, MICHIGAN 48226
PHONE: (313) 224-3949 TTY: 711
WWW.DETROITMI.GOV

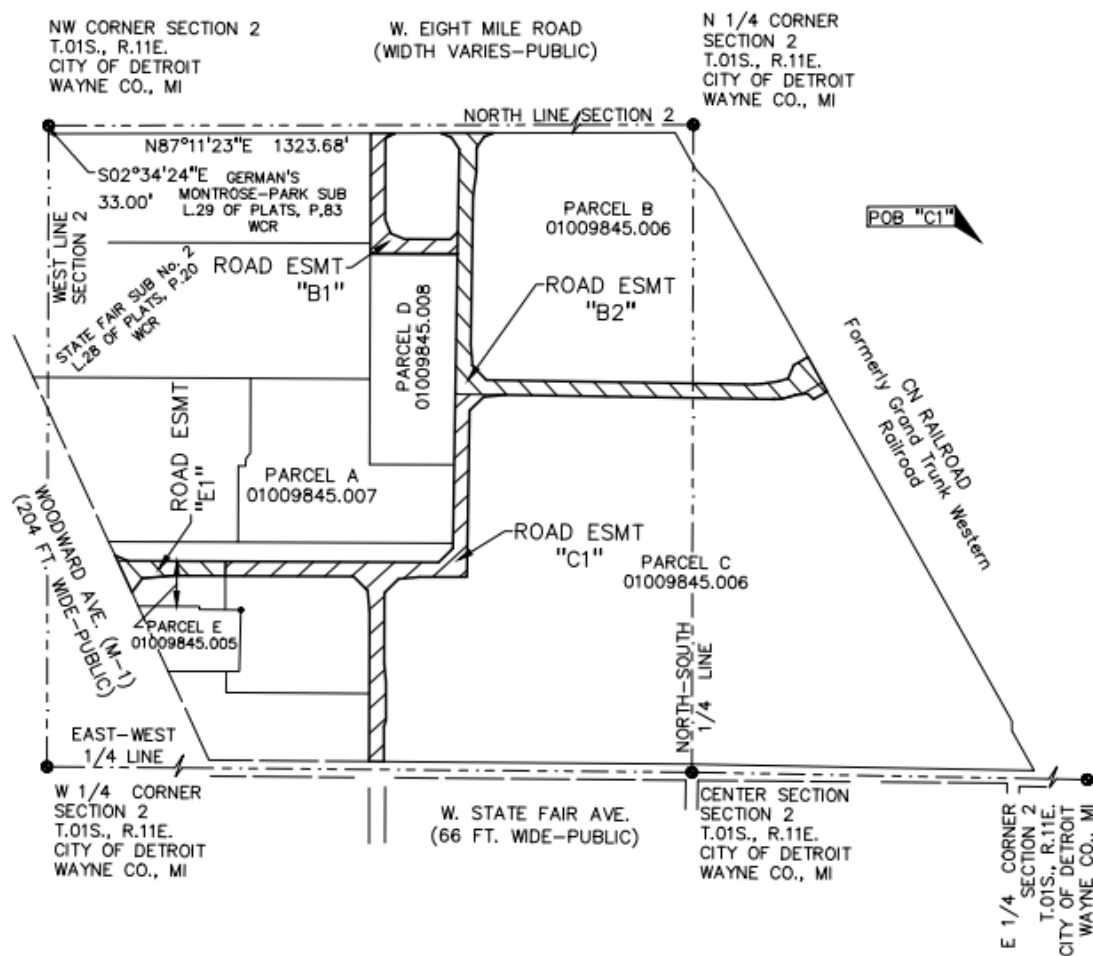




COLEMAN A. YOUNG MUNICIPAL CENTER
2 WOODWARD AVE. SUITE 601
DETROIT, MICHIGAN 48226
PHONE: (313) 224-3949 TTY: 711
WWW.DETROITMI.GOV

0 300 600 1200

SCALE: 1" = 600'



SEE SHEET 2 OF 3 FOR THE
COURSES AND DISTANCES



COLEMAN A. YOUNG MUNICIPAL CENTER
2 WOODWARD AVE. SUITE 601
DETROIT, MICHIGAN 48226
PHONE: (313) 224-3949 TTY: 711
WWW.DETROITMI.GOV

NW CORNER SECTION 2
T.01S., R.11E.
CITY OF DETROIT
WAYNE CO., MI

W. EIGHT MILE ROAD
(WIDTH VARIES—PUBLIC)

NORTH LINE, SECTION 2

S02°34'24"E 33.00'

N87°11'23"E 1611.26'
S70°07'04"E 47.86'
S35°57'58"E 56.14'

PARCEL D
01009845.008

PARCE
0100984
ROAD

PARCEL A
01009845.007

POB "E1"

L63 L64 ROAD ESMT "E1" L58
L60 L59 PARCEL E
01009845.005

WOODWARD AVE. (M-1)
(204 FT. WIDE—PUBLIC)

ROAD ESMT "C1"

PARCEL C
01009845.006

Line Table

Line #	Direction	Length
L58	S02°26'10"E	60.04'
L59	S87°32'13"W	215.78'
L60	S82°26'05"W	124.76'
L61	S34°14'00"W	72.31'
L62	N27°25'30"W	166.51'
L63	S69°44'28"E	56.74'
L64	N87°31'34"E	401.22'

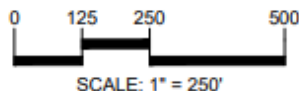
S01°48'52"E 1636.18'

S42°52'33"W 82.23'

S87°31'34"W 874.96'

NORTH

Line Table		
Line #	Direction	Length
L58	S02°26'10"E	60.04'
L59	S87°32'13"W	215.78'
L60	S82°26'05"W	124.76'
L61	S34°14'00"W	72.31'
L62	N27°25'30"W	166.51'
L63	S69°44'28"E	56.74'
L64	N87°31'34"E	401.22'





CITY OF DETROIT
DEPARTMENT OF PUBLIC WORKS
CITY ENGINEERING DIVISION

COLEMAN A. YOUNG MUNICIPAL CENTER
2 WOODWARD AVE. SUITE 601
DETROIT, MICHIGAN 48226
PHONE: (313) 224-3949 TTY: 711
WWW.DETROITMI.GOV

LEGAL DESCRIPTION

ROAD RIGHT-OF-WAY "E1"

A variable width easement for Ingress and egress in a part of the Northwest Quarter of Section 2, Township 01 South, Range 11 East, City of Detroit, Wayne County, Michigan, being described as:

Commencing at the Northwest corner of said Section 2, thence S02°34'24"E, 33.00 feet along the West line of said Section 2 to the South right-of-way line of Eight Mile Road (width varies), being the North line of GERMAN'S MONTROSE-PARK SUBDIVISION as shown in Liber 29 of Plats, page 83 of the Wayne County Records; thence N87°11'23"E 1611.26 feet along said South right-of-way line of Eight Mile Road; thence S70°07'04"E 47.86 feet; thence S35°57'58"E 56.14 feet; thence S01°48'52"E 1638.18 feet; thence S42°52'33"W 82.23 feet; thence S87°31'34"W 874.96 feet to the POINT OF BEGINNING; thence S02°26'10"E, 60.04 feet; thence S87°32'13"W, 215.78 feet; thence S82°26'05"W, 124.76 feet; thence S34°14'00"W, 72.31 feet; thence N27°25'30"W, 166.51 feet along the easterly line of Woodward Ave. (204 ft wide); thence S69°44'28"E, 56.74 feet; thence N87°31'34"E, 401.22 feet to the POINT OF BEGINNING

