

Janice M. Winfrey
City Clerk

City of Detroit
OFFICE OF THE CITY CLERK

Andre P. Gilbert II
Deputy City Clerk

DEPARTMENT PETITION REFERENCE COMMUNICATION

To: The Department or Commission Listed Below

From: Janice M Winfrey, Detroit City Clerk

The following petition is herewith referred to you for report and recommendation to the City Council.

In accordance with that body's directive, kindly return the same with your report in duplicate within four (4) weeks.

Petition No.	2024-394
Name of Petitioner	Selden Gardens LLC *
Description of Petition	Petition to request encroachment into the East/West public alley for an existing fire escape on the property located at 2030 Park Ave.
Type of Petition	Alley Vacation/Encroachment/Utility Vacation
Submission Date	12/02/24
Concerned Departments	Media Services, Building & Safety Engineering, Police Department, Fire Department, Municipal Parking Department, Transportation Department, Health Department, General Services Department
Petitioner Contact	Selden Gardens LLC 73 W Elizabeth Detroit, MI 48201 (P): 313-961-2543



**CITY OF DETROIT
DEPARTMENT OF PUBLIC WORKS
CITY ENGINEERING DIVISION**

**COLEMAN A. YOUNG MUNICIPAL CENTER
2 WOODWARD AVE. SUITE 601
DETROIT, MICHIGAN 48226
PHONE: (313) 224-3949 TTY: 711
WWW.DETROITMI.GOV**

To: Clerk's Office
From: The Department of Public Works
City Engineering Division
MapsandRecordsBureau@DetroitMI.Gov
(313) 224-3970

Petitioner:
Selden Gardens LLC
73 W Elizabeth
Detroit, MI 48201

On behalf of the above-mentioned petitioner the Department of Public Works: City Engineering Division is submitting a petition request for the below mentioned action. The petitioner has received a project consultation from the Department of Public Works: City Engineering Division and has been advised the following:

Type of action recommended:

Petition to request encroachment into the East/West public alley for an existing fire escape on the property located at 2030 Park Ave.

Georgine Gersdorff
Manager II
Department of Public Works
City Engineering Division
313-224-3985



CITY OF DETROIT
DEPARTMENT OF PUBLIC WORKS
CITY ENGINEERING DIVISION

COLEMAN A. YOUNG MUNICIPAL CENTER
2 WOODWARD AVE. SUITE 601
DETROIT, MICHIGAN 48226
PHONE: (313) 224-3949 TTY: 711
WWW.DETROITMI.GOV



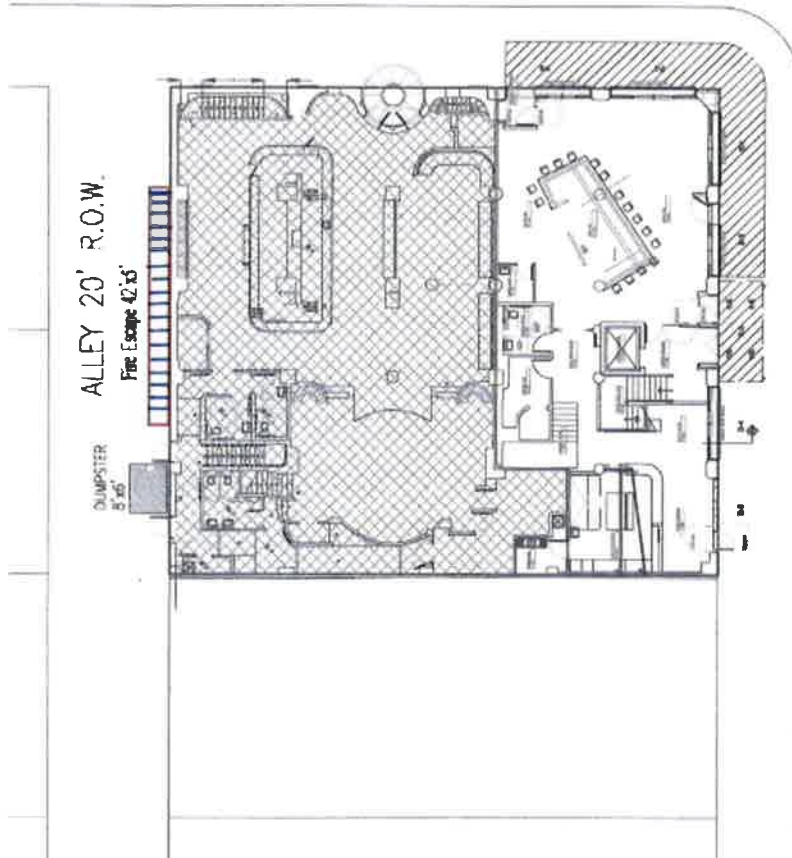
Southwest Corner of Park and Mackintosh Streets - Detroit Michigan
Renovations to the Campus Building - Bar
Architectural Floor Plan - Showing New Bar and adjoining CMF Boils

Sheet: 01220001	0
Date: 04.04.13	A



PARK BOULEVARD
60' R.O.W.

WEST ELIZABETH
60' R.O.W.



ALLEY 20' R.O.W.
Fire Escape 42'x5'

DUMPSTER
5'x6'



Campus Building - New Bar & CMF Boils
First Floor Bar Plan
SCALE: 1/16" = 1' - 0"



**CITY OF DETROIT
DEPARTMENT OF PUBLIC WORKS
CITY ENGINEERING DIVISION**

**COLEMAN A. YOUNG MUNICIPAL CENTER
2 WOODWARD AVE. SUITE 601
DETROIT, MICHIGAN 48226
PHONE: (313) 224-3949 TTY: 711
WWW.DETROITMI.GOV**

Cliff Bell's

2030 Park Ave
Detroit, MI 48226
(313) 961-2543
www.cliffbells.com

October 11, 2024

City of Detroit

Re: Encroachment Application

To whom it may concern,

Cliff Bell's, LLC is the tenant of Selden Gardens, LLC and representing Selden Gardens, LLC for this application. Both companies are owned by Paul Howard and Scott Lowell.

Our proposal is to receive an encroachment approval for the fire escape located in the alley. The fire escape has been attached to the property since 1925 without complaint from the neighboring properties. Cliff Bell's, LLC has exhausted all other options for fire escape placement and deemed that the current placement of the fire escape is the best method to ensure the second-floor occupants have two escape routes should there be a fire or other need for immediate vacating of the property.

The purpose of this encroachment is for alley fire escape for second floor occupants.

We have completed the site plan and are unaware of any permits required.

Respectfully yours,


Paul Howard



CITY OF DETROIT
DEPARTMENT OF PUBLIC WORKS
CITY ENGINEERING DIVISION

COLEMAN A. YOUNG MUNICIPAL CENTER
2 WOODWARD AVE. SUITE 601
DETROIT, MICHIGAN 48226
PHONE: (313) 224-3949 TTY: 711
WWW.DETROITMI.GOV

MAP-24-157

ELIZABETH ST. 60 FT. WD.

PARK AVE. 60 FT. WD.

2030 PARK AVE.

19

FIRE ESCAPE
10.66' ABOVE GRADE

WOODWARD AVE. 120 FT. WD.

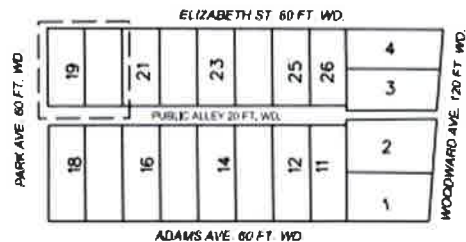
16'

42'

5'

PUBLIC ALLEY 20 FT. WD.

 - REQUEST ENCROACHMENT
(FOR ABOVE GRADE FIRE ESCAPE)



(FOR OFFICE USE ONLY)

CARTO 28 B

B					
A					
REVISIONS					
DESCRIPTION	BY	CHKD	APPD	DATE	
DRAWN BY	LC	CHECKED	AP		
DATE	10-21-2024	APPROVED	RW		

REQUEST ENCROACHMENT INTO
PUBLIC ALLEY BOUNDED BY
PARK AVE., ADAMS AVE., WOODWARD AVE.,
AND ELIZABETH ST. AT 2030 PARK AVE.

CITY OF DETROIT
CITY ENGINEERING DIVISION
SURVEY BUREAU

JOB NO. 24-157

DRWG. NO.



**CITY OF DETROIT
DEPARTMENT OF PUBLIC WORKS
CITY ENGINEERING DIVISION**

**COLEMAN A. YOUNG MUNICIPAL CENTER
2 WOODWARD AVE. SUITE 601
DETROIT, MICHIGAN 48226
PHONE: (313) 224-3949 TTY: 711
WWW.DETROITMI.GOV**
