



**CITY OF DETROIT  
DEPARTMENT OF PUBLIC WORKS  
CITY ENGINEERING DIVISION**

**COLEMAN A. YOUNG MUNICIPAL CENTER  
2 WOODWARD AVE. SUITE 601  
DETROIT, MICHIGAN 48226  
PHONE: (313) 224-3949 TTY: 711  
WWW.DETROITMI.GOV**

---

To: Clerk's Office  
From: The Department of Public Works  
City Engineering Division  
MapsandRecordsBureau@DetroitMI.Gov  
(313) 224-3970

Petitioner:  
DPW, City Engineering Division  
2 Woodward Ave.  
Detroit, MI 48226

On behalf of the above-mentioned petitioner the Department of Public Works: City Engineering Division is submitting a petition request for the below mentioned action. The petitioner has received a project consultation from the Department of Public Works: City Engineering Division and has been advised the following:

Type of action recommended:

Dedication of land as a right-of-way that was previously vacated with an easement, and to remove the dedication of land, both done in 2008. The planned project was never completed.

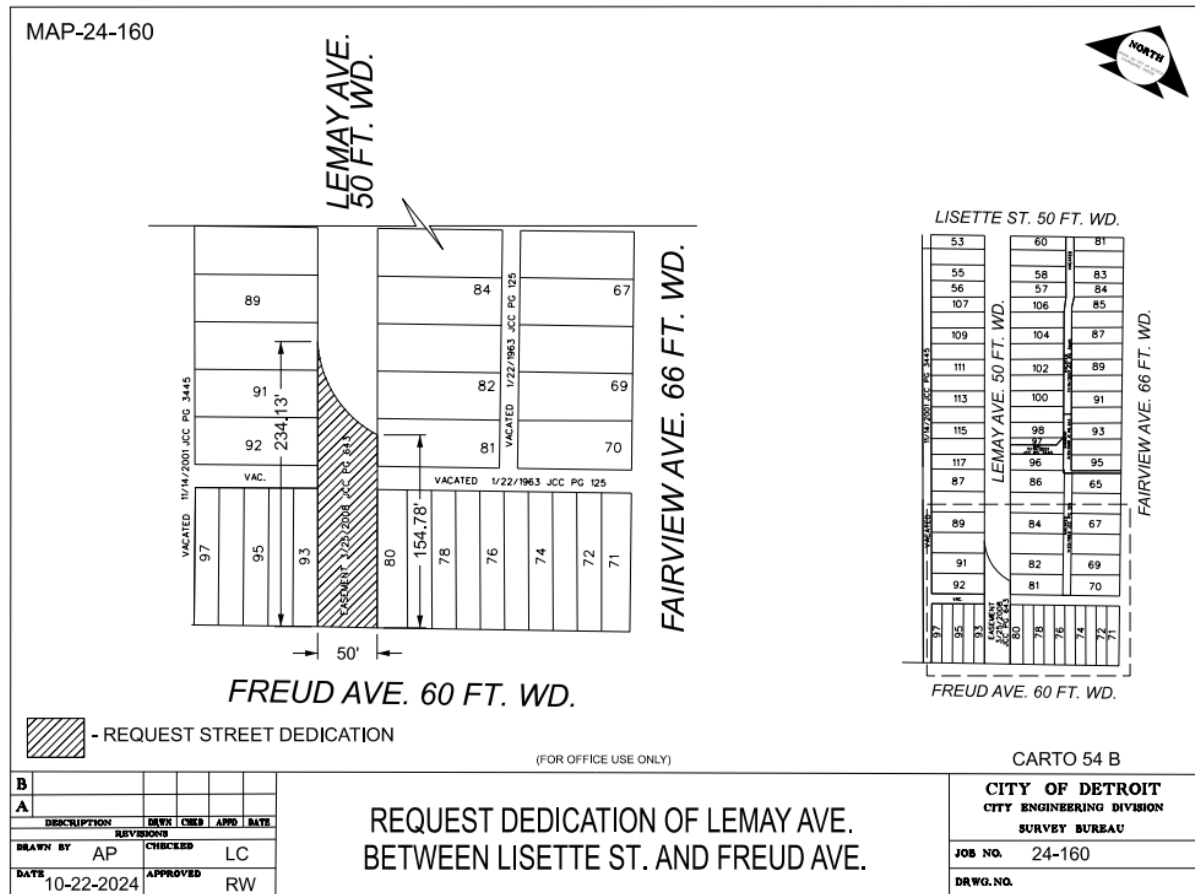
Georgine Gersdorff  
Manager II  
Department of Public Works  
City Engineering Division  
313-224-3985



This is a screenshot of a web-based GIS application. The main view is an aerial photograph of a city block. Overlaid on the map are several colored polygons: a large yellow area covering most of the block, and several red areas, including a prominent one on the left and a smaller one at the top. A 3D model of a yellow, rectangular building with a flat roof is positioned in the center of the yellow area. Street names are labeled in white text: 'Front' appears multiple times along the bottom and right edges of the yellow area; 'Fairview' is labeled vertically along a street on the right; 'Mulbridge' is labeled vertically along a street on the left. A scale bar in the bottom left corner shows distances of 0, 50, and 100 feet. In the top left corner, there are four circular icons: a plus sign for zoom in, a square for full screen, a minus sign for zoom out, and a circular arrow for refresh. The bottom right corner features the text 'POWERED BY' above the 'esri' logo.



**COLEMAN A. YOUNG MUNICIPAL CENTER**  
**2 WOODWARD AVE. SUITE 601**  
**DETROIT, MICHIGAN 48226**  
**PHONE: (313) 224-3949 TTY: 711**  
**WWW.DETROITMI.GOV**





**CITY OF DETROIT**  
**DEPARTMENT OF PUBLIC WORKS**  
**CITY ENGINEERING DIVISION**

**COLEMAN A. YOUNG MUNICIPAL CENTER**  
**2 WOODWARD AVE. SUITE 601**  
**DETROIT, MICHIGAN 48226**  
**PHONE: (313) 224-3949 TTY: 711**  
**[WWW.DETROITMI.GOV](http://WWW.DETROITMI.GOV)**

---