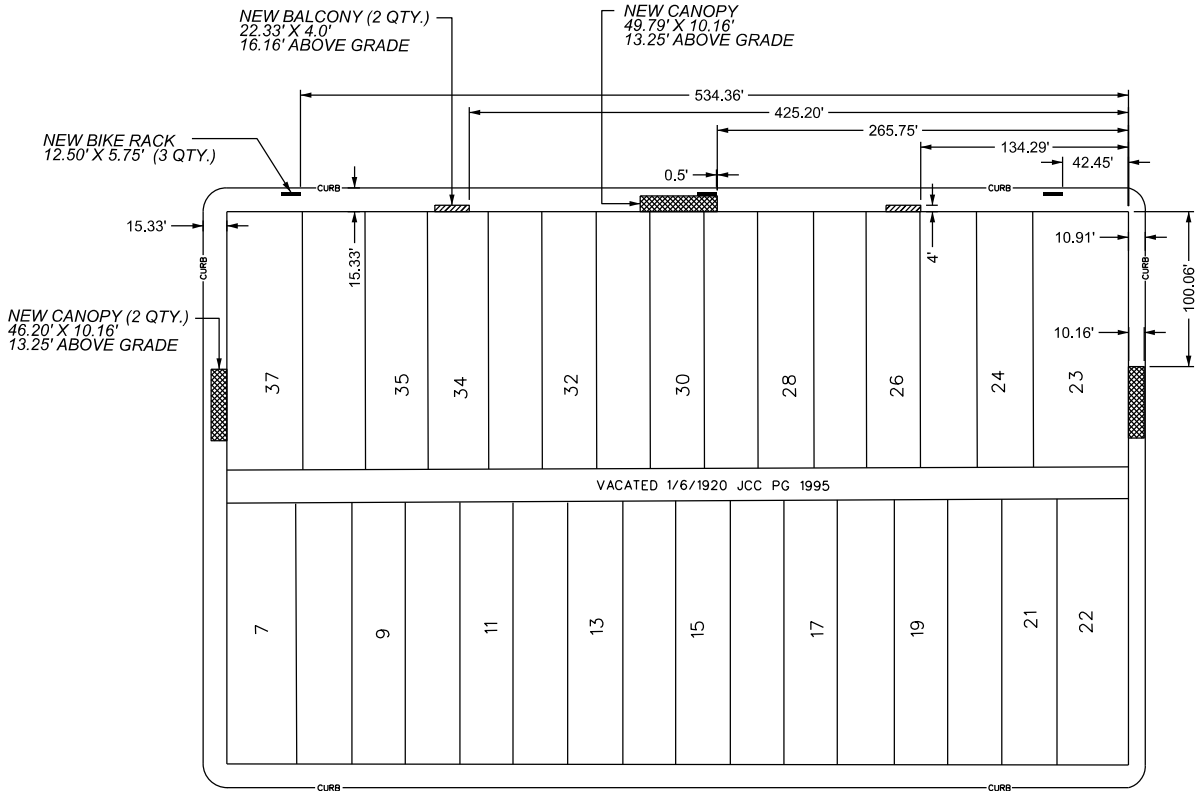


PIQUETTE ST. 80 FT. WD.

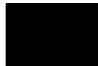
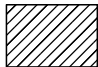
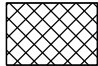


SAINT ANTOINE ST. 50 FT. WD.



HASTINGS ST. 60 FT. WD.

NOTE:
FOR BIKE RACKS AND CANOPIES
BOTH SIDES DIMENSIONS SHALL
BE UNIFORM, UNLESS NOTED OTHERWISE.

-  - REQUEST ENCROACHMENT
(FOR THREE BIKE RACKS)
-  - REQUEST ENCROACHMENT
(FOR TWO BALCONIES, 16.16' ABOVE GRADE)
-  - REQUEST ENCROACHMENT
(FOR THREE CANOPIES, 13.25' ABOVE GRADE)

(FOR OFFICE USE ONLY)

| | | | | | |
|-------------|------------|----------|------|------|------|
| B | | | | | |
| A | | | | | |
| DESCRIPTION | | DRWN | CHKD | APPD | DATE |
| REVISIONS | | | | | |
| DRAWN BY | AP | CHECKED | | LC | |
| DATE | 11-18-2024 | APPROVED | | RW | |

REQUEST ENCROACHMENT
INTO SAINT ANTOINE ST.,
PIQUETTE ST., AND HASTINGS ST.
AT 6051 HASTINGS ST.

| | |
|---|--------|
| CARTO 31 F | |
| CITY OF DETROIT CITY ENGINEERING DIVISION SURVEY BUREAU | |
| JOB NO. | 24-151 |
| DRWG. NO. | |