

GENERAL NOTES - SITE

1. REFER TO MECHANICAL, PLUMBING, ELECTRICAL, STRUCTURAL, AND CIVIL DRAWINGS FOR MORE INFORMATION.
2. ALL SITE WORK (CURB CUTS, SIDEWALKS, PARKING, LANDSCAPING, ETC.) IS NEW. REFER TO CIVIL AND LANDSCAPE DRAWINGS FOR EXACT PLACEMENT AND SPECIFICATIONS OF SITE ELEMENTS.
3. PATCH AND REPAIR EXISTING CONCRETE AND PAVEMENT AS REQUIRED FOR NEW UTILITY TAPS.

NEW WORK KEY NOTES - SITE

NUMBER	DESCRIPTION
1	NEW LINE OF CANOPY/OVERHANG ABOVE (APPROX. 13'-3" ABOVE SIDEWALK ELEVATION)
2	NEW HARDSCAPE
3	NEW RPD CONTROLLED MOTORIZED GATE
4	NEW BIKE RACK - LANDSCAPE FORMS BOLA OR EQUAL
5	NEW BENCH SEATING WITH INTEGRATED PLANTERS
6	NEW DOG PARK
7	NEW 6" BLACK METAL PICKET FENCE
8	NEW HEATED POOL - BY OTHERS
9	NEW ELECTRICAL EQUIPMENT ON CONCRETE PAD - REF. ELECTRICAL DWGS.
10	NEW 12X55 LOADING SPACE
11	NEW 12X55 LOADING SPACE
12	NEW GAS METERS - REF. MECHANICAL DWGS.
13	SALVAGED HOPPER AND ASSOCIATED FRAME FROM ROOF - REF. LANDSCAPE DWGS FOR FINAL PLACEMENT
14	LINE OF BALCONIES ABOVE (APPROX. 16'-2" ABOVE SIDEWALK ELEVATION)

PARKING INFORMATION

**TOTAL REQUIRED PARKING:**  
CODE SECTION 61-14-7, (2) AND 61-14-103, (C)  
RESIDENTIAL 0.75 SPACES PER DWELLING UNIT  
RETAIL 1 SPACE PER 200 GSF  
OFFICE 1 SPACE PER 400 GSF  
RESTAURANT 3 SPACES FOR FIRST 500 GSF, 1/100 FOR REMAINING AREA  
TOTAL SPACES REQUIRED = 543 SPACES  
TOTAL SPACES PROVIDED = 655 SPACES

REQUIRED HANDICAP

CODE SECTION 61-14-122  
101-150 4 CAR + 1 VAN  
151-200 5 CAR + 1 VAN  
201-300 6 CAR + 1 VAN  
301-400 8 CAR + 2 VAN

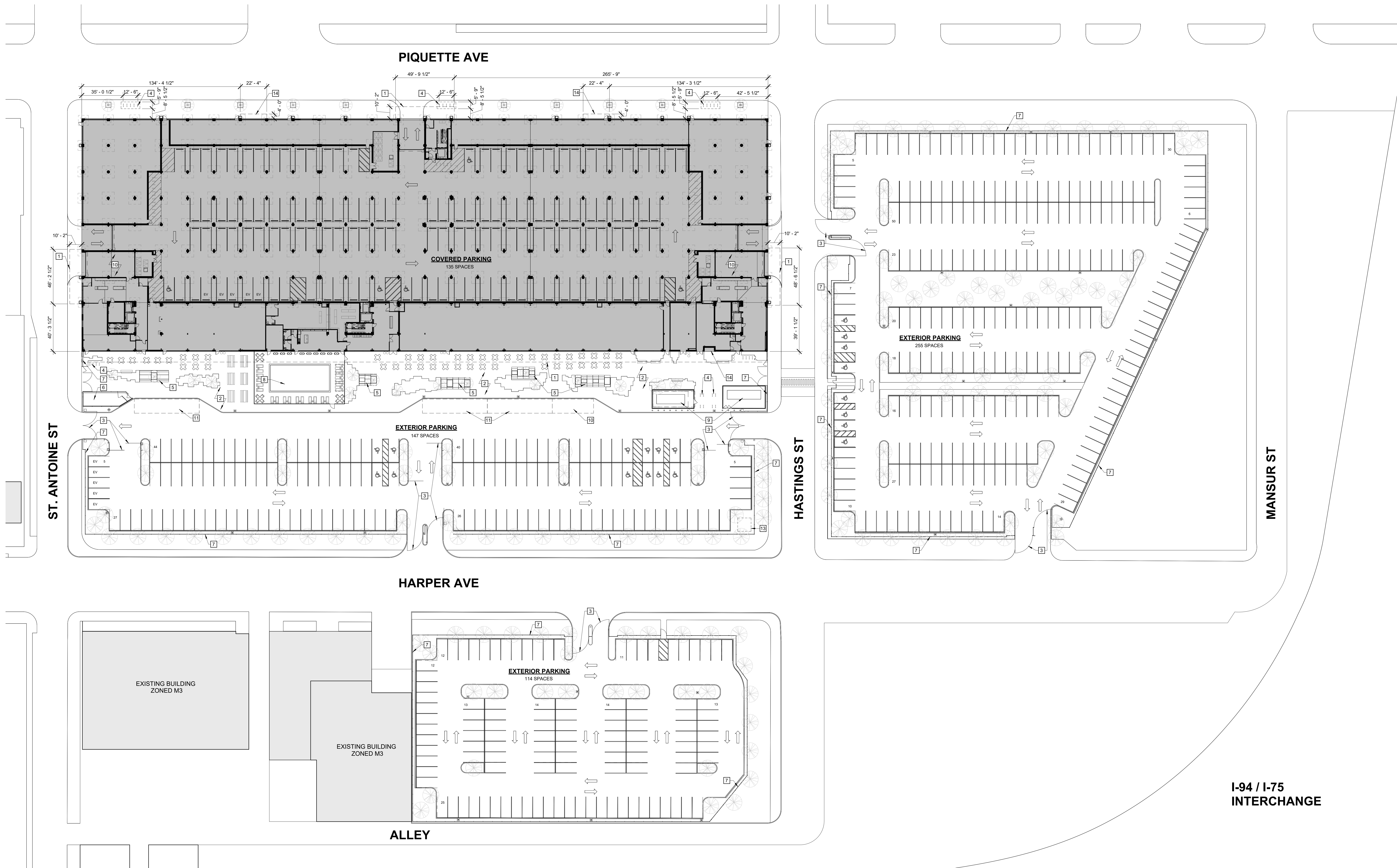
MAIN LOT HANDICAP SPACES REQUIRED = 4 CAR + 1 VAN  
MAIN LOT HANDICAP SPACES PROVIDED = 8 CAR + 4 VAN  
EAST LOT HANDICAP SPACES REQUIRED = 6 CAR + 1 VAN  
EAST LOT HANDICAP SPACES PROVIDED = 6 CAR + 2 VAN  
SOUTH LOT HANDICAP SPACES REQUIRED = 4 CAR + 1 VAN  
SOUTH LOT HANDICAP SPACES PROVIDED = 0 CAR + 0 VAN  
COVERED LOT HANDICAP SPACES REQUIRED = 4 CAR + 1 VAN  
COVERED LOT HANDICAP SPACES PROVIDED = 4 CAR + 1 VAN

**REQUIRED LOADING AREA:**  
MULTIPLE FAMILY DWELLING 10,000-100,000 GSF = (1) 12' X 35'  
EACH ADDITIONAL 100,000 GSF = (1) 12' X 55'  
RETAIL 1,600-10,000 GSF = (1) 12' X 35'  
10,000-25,000 GSF = (2) 12' X 35'  
25,000-40,000 GSF = (2) 12' X 55'  
40,000-100,000 GSF = (1) 12' X 35'  
RESTAURANT/OFFICE 10,000-100,000 GSF = (1) 12' X 35'

LOADING SPACES REQUIRED = (4) 12' X 35' AND (2) 12' X 55'  
LOADING SPACES PROVIDED = (4) 12' X 35' AND (2) 12' X 55'

BIKE PARKING:

EXTERIOR BIKE PARKING SPACES PROVIDED = 62  
INTERIOR BIKE PARKING SPACES PROVIDED = 130



I-94 / I-75  
INTERCHANGE



1

ARCHITECTURAL SITE PLAN

SCALE: 1" = 35'-0"