



**CITY OF DETROIT
DEPARTMENT OF PUBLIC WORKS
CITY ENGINEERING DIVISION**

**COLEMAN A. YOUNG MUNICIPAL CENTER
2 WOODWARD AVE. SUITE 601
DETROIT, MICHIGAN 48226
PHONE: (313) 224-3949 TTY: 711
WWW.DETROITMI.GOV**

To: Clerk's Office
From: The Department of Public Works
City Engineering Division
MapsandRecordsBureau@DetroitMI.Gov
(313) 224-3970

Petitioner:
Motorola Solutions
500 W. Monroe
Chicago, IL 60661

On behalf of the above-mentioned petitioner the Department of Public Works: City Engineering Division is submitting a petition request for the action below. The petitioner has received a project consultation from the Department of Public Works: City Engineering Division and has been advised the following:

Type of action recommended:

Petition for encroachment into various rights-of-way across the city for the installation of LPR's (license plate readers and solar panels) for DPD/DOIT, the existing poles are unusable. Motorola Solutions is submitting this encroachment application in support of the Detroit Police Department License Plate Recognition (LPR) project. Included in the encroachment application are 75 locations that will require the installation of a new metal pole for the purpose of mounting LPR camera equipment and solar panels.

Raven Wright
Supervisor of Maps & Records
Department of Public Works
City Engineering Division
313-224-3985



CITY OF DETROIT
DEPARTMENT OF PUBLIC WORKS
CITY ENGINEERING DIVISION

COLEMAN A. YOUNG MUNICIPAL CENTER
2 WOODWARD AVE. SUITE 601
DETROIT, MICHIGAN 48226
PHONE: (313) 224-3949 TTY: 711
WWW.DETROITMI.GOV



CITY OF DETROIT
DEPARTMENT OF PUBLIC WORKS
CITY ENGINEERING DIVISION

COLEMAN A. YOUNG MUNICIPAL CENTER
2 WOODWARD AVE. SUITE 601
DETROIT, MICHIGAN 48226
PHONE: (313) 224-3949 TTY: 711
WWW.DETROITMI.GOV



MOTOROLA SOLUTIONS

500 West Monroe Street – 40th Floor
Chicago, Illinois 60661

September 19, 2024

Department of Public Works
2 Woodward Ave # 611
Detroit, MI 48226

Subject: Petition for Encroachment

Dear Permitting Department,

On behalf of Robert Millender, Director of Public Safety IT, City of Detroit - DoIT Department, Motorola Solutions is submitting this Encroachment Application in support of the Detroit Police Department License Plate Recognition (LPR) project.

Included in this application are 119 locations that will require the installation of a new metal pole for the purpose of mounting LPR camera equipment and solar panels. Each location has a system name identifying the intersection and direction of the camera along with coordinates to identify the approximate location where the pole is planned to be installed.

Also included are the site plans for each location identifying an approximate location for the new pole represented by an image of a camera with an angle towards the street to model the data to be captured by the cameras, a street level view of the pole placement and an overview of the area capturing estimated property lines and numbers.

As you know we have already commenced with onsite installations at locations where we were approved to install the LPR equipment on existing poles. This application is an extension of that project which will assist the Detroit PD in their efforts to fight crime via LPR recognition equipment.

Please contact me directly if you should have any questions or require additional information in regards to this request. Thanks in advance for your assistance.

Sincerely,

Nick Hecimovich
Motorola Solutions, Inc.
nicholas.hecimovich@motorolasolutions.com
Office (312)244-0930



CITY OF DETROIT
DEPARTMENT OF PUBLIC WORKS
CITY ENGINEERING DIVISION

COLEMAN A. YOUNG MUNICIPAL CENTER
2 WOODWARD AVE. SUITE 601
DETROIT, MICHIGAN 48226
PHONE: (313) 224-3949 TTY: 711
WWW.DETROITMI.GOV



CITY OF DETROIT
DEPARTMENT OF PUBLIC WORKS
CITY ENGINEERING DIVISION

COLEMAN A. YOUNG MUNICIPAL CENTER
2 WOODWARD AVE. SUITE 601
DETROIT, MICHIGAN 48226
PHONE: (313) 224-3949 TTY: 711
WWW.DETROITMI.GOV

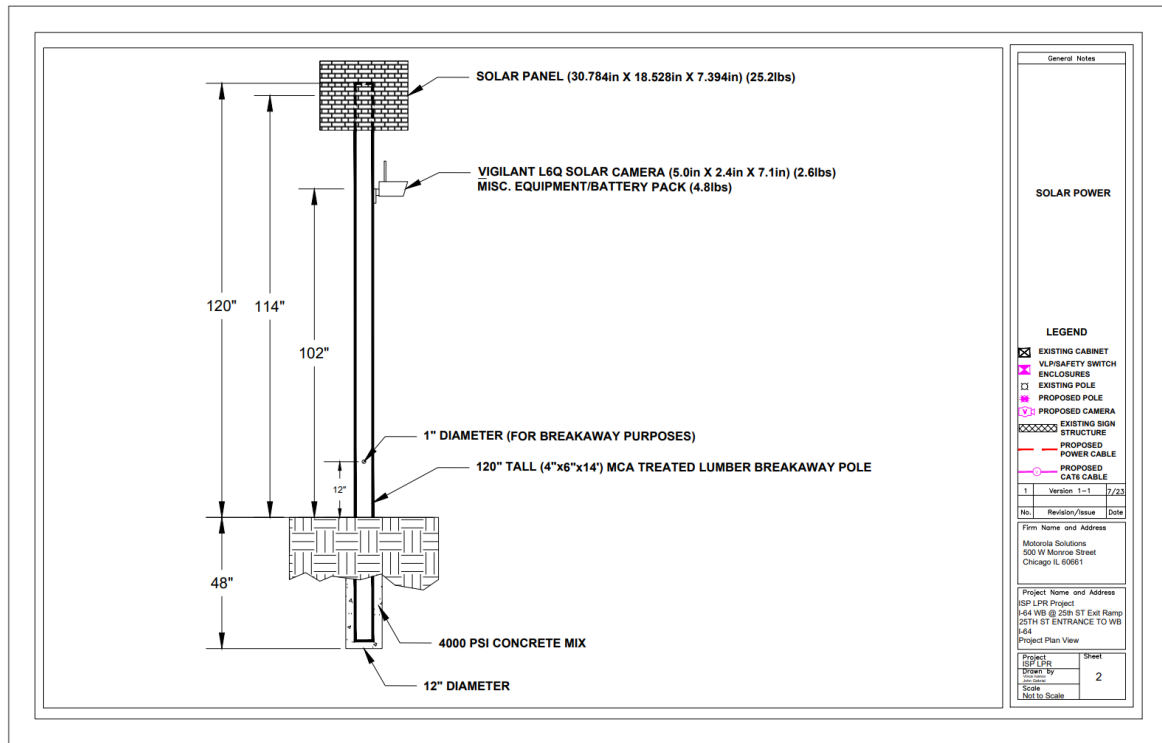
City of Detroit - Example of new pole with LPR and solar panel (all black).





CITY OF DETROIT
DEPARTMENT OF PUBLIC WORKS
CITY ENGINEERING DIVISION

COLEMAN A. YOUNG MUNICIPAL CENTER
2 WOODWARD AVE. SUITE 601
DETROIT, MICHIGAN 48226
PHONE: (313) 224-3949 TTY: 711
WWW.DETROITMI.GOV





CITY OF DETROIT
DEPARTMENT OF PUBLIC WORKS
CITY ENGINEERING DIVISION

COLEMAN A. YOUNG MUNICIPAL CENTER
2 WOODWARD AVE. SUITE 601
DETROIT, MICHIGAN 48226
PHONE: (313) 224-3949 TTY: 711
WWW.DETROITMI.GOV



CITY OF DETROIT
DEPARTMENT OF PUBLIC WORKS
CITY ENGINEERING DIVISION

COLEMAN A. YOUNG MUNICIPAL CENTER
2 WOODWARD AVE. SUITE 601
DETROIT, MICHIGAN 48226
PHONE: (313) 224-3949 TTY: 711
WWW.DETROITMI.GOV

HDC2024-00592

APPROVAL DOCUMENT – POST AT WORK LOCATION

CITY OF DETROIT
HISTORIC DISTRICT COMMISSION

2 WOODWARD, SUITE 808
DETROIT, MICHIGAN 48226

10/16/2024

CERTIFICATE OF APPROPRIATENESS (ADMINISTRATIVE APPROVAL)

Nicholas Hecimovich
Motorola Solutions
500 W. Monroe
Chicago, IL 60606

RE: Application Number HDC2024-00592; See Addresses and Historic Districts Listed Below

Dear Applicant,

Pursuant to Section 5(10) of the Michigan Local Historic District Act, as amended, being MCL 399.205 (10) and Sections 21-2-57 and 21-2-73 of the 2019 Detroit City Code, and Detroit Historic District Commission ("DHDC") delegation of administrative authority via Resolutions 97-01, 97-02, 98-01, 20-03, 21-04, and/or 21-07, as applicable, the staff of the DHDC has reviewed the above referenced application and hereby issues a Certificate of Appropriateness ("COA") for the following work, effective on October 16, 2024, as it meets the Secretary of the Interior's Standards for Rehabilitation and the district's Elements of Design:

Per the submitted drawings and support material, install License Plate Recognition (LPR) equipment. Each installation will measure 156" in height and shall include a metal pole with solar panel and LPR camera at the following five (5) locations:

*Boston-Edison Historic District – NB Rosa Parks Blvd. at Chicago Blvd. and
WB Chicago Blvd. at Woodward Ave.*

New Center Area Historic District – NB Rosa Parks Blvd. at West Grand Blvd.

*Lower Woodward Historic District – NB Woodward Ave. at Grand River Ave. and
SB Woodward Ave. at Grand River Ave.*

Please retain this COA for your files and post it at the subject property until work is complete. It is important to note that approval by the DHDC does not waive the applicant's responsibility to comply with any other applicable ordinances or statutes. If you have any questions regarding the foregoing, please contact staff at 313-224-1762 or hdc@detroitmi.gov.

For the Commission:

Daniel Rieden
Senior Clerk to the Historic District Commission

PSR:241016JR



CITY OF DETROIT
DEPARTMENT OF PUBLIC WORKS
CITY ENGINEERING DIVISION

COLEMAN A. YOUNG MUNICIPAL CENTER
2 WOODWARD AVE. SUITE 601
DETROIT, MICHIGAN 48226
PHONE: (313) 224-3949 TTY: 711
WWW.DETROITMI.GOV



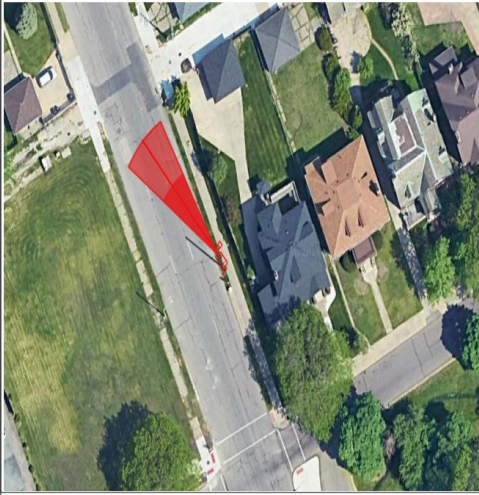
CITY OF DETROIT
DEPARTMENT OF PUBLIC WORKS
CITY ENGINEERING DIVISION






COLEMAN A. YOUNG MUNICIPAL CENTER
2 WOODWARD AVE. SUITE 601
DETROIT, MICHIGAN 48226
PHONE: (313) 224-3949 TTY: 711
WWW.DETROITMI.GOV

NB Rosa Parks Bl at Chicago Bl

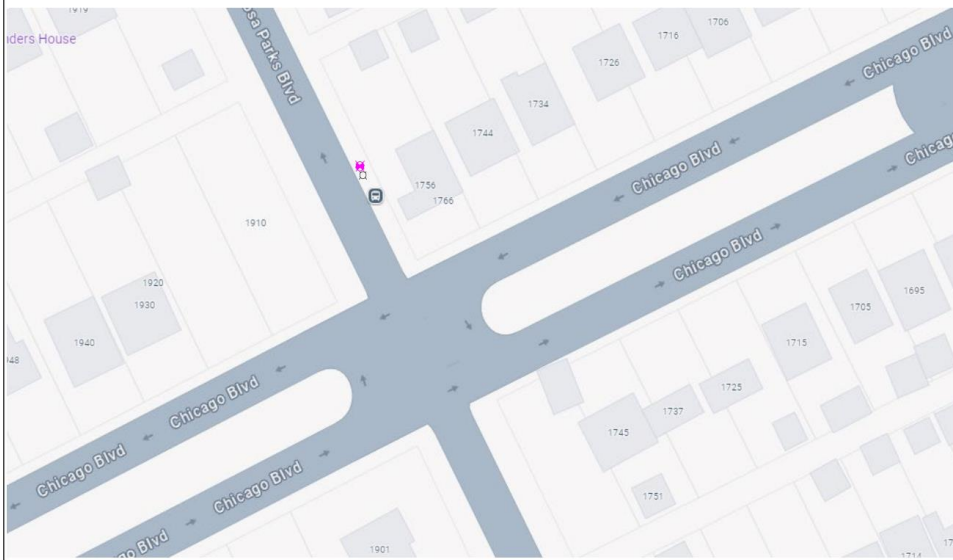
Lat: 42.38030161329853
Long: -83.1020744447399



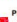


Install a New Sign Pole for LPR Camera



General Notes		
 SOLAR POWER		
LEGEND		
	EXISTING POLE	
	PROPOSED POLE	
	PROPOSED CAMERA	
	PROPERTY LINE	
1	Version: 1-1	6/24
No.	Revision/Issue	Date
Firm Name and Address		
Midstate Solutions 500 W Monroe Street Chicago IL 60661		
Project Name and Address		
MI LPR Project		
New Pole Installation Site		
Project Plan View		
Project	Sheet	
MI LPR	1	
Scale	Not to Scale	

NB Rosa Parks Bl at Chicago Bl



General Notes		
 SOLAR POWER		
LEGEND		
	EXISTING POLE	
	PROPOSED POLE	
	PROPOSED CAMERA	
	PROPERTY LINE	
1	Version: 1-2	6/24
No.	Revision/Issue	Date
Firm Name and Address		
Midstate Solutions 500 W Monroe Street Chicago IL 60661		
Project Name and Address		
MI LPR Project		
New Pole Installation Site		
Project Plan View		
Project	Sheet	
MI LPR	2	
Scale	Not to Scale	



CITY OF DETROIT
DEPARTMENT OF PUBLIC WORKS
CITY ENGINEERING DIVISION

COLEMAN A. YOUNG MUNICIPAL CENTER
2 WOODWARD AVE. SUITE 601
DETROIT, MICHIGAN 48226
PHONE: (313) 224-3949 TTY: 711
WWW.DETROITMI.GOV
