

Janice M. Winfrey
City Clerk

City of Detroit
OFFICE OF THE CITY CLERK

Andre P. Gilbert II
Deputy City Clerk

DEPARTMENT PETITION REFERENCE COMMUNICATION

To: The Department or Commission Listed Below

From: Janice M Winfrey, Detroit City Clerk

The following petition is herewith referred to you for report and recommendation to the City Council.

In accordance with that body's directive, kindly return the same with your report in duplicate within four (4) weeks.

Petition No.	2024-357
Name of Petitioner	Left Field 2020 LDHA LLC
Description of Petition	Petition to request encroachment into the easterly portion of Cochrane Ave. for stair access and a concrete slab for a new construction.
Type of Petition	Alley Vacation/Encroachment/Utility Vacation
Submission Date	10/21/24
Concerned Departments	Media Services, Building & Safety Engineering, Police Department, Fire Department, Municipal Parking Department, Transportation Department, Health Department, General Services Department
Petitioner Contact	Daniel Osborne St. Clair Construction Company 20250 Harper Ave Detroit, MI 48225



**CITY OF DETROIT
DEPARTMENT OF PUBLIC WORKS
CITY ENGINEERING DIVISION**

**COLEMAN A. YOUNG MUNICIPAL CENTER
2 WOODWARD AVE. SUITE 601
DETROIT, MICHIGAN 48226
PHONE: (313) 224-3949 TTY: 711
WWW.DETROITMI.GOV**

To: Clerk's Office
From: The Department of Public Works
City Engineering Division
MapsandRecordsBureau@DetroitMI.Gov
(313) 224-3970

Petitioner:
Left Field 2020 LDHA LLC
20250 Harper Ave
Detroit, MI 48225

On behalf of the above-mentioned petitioner the Department of Public Works: City Engineering Division is submitting a petition request for the below mentioned action. The petitioner has received a project consultation from the Department of Public Works: City Engineering Division and has been advised the following:

Type of action recommended:

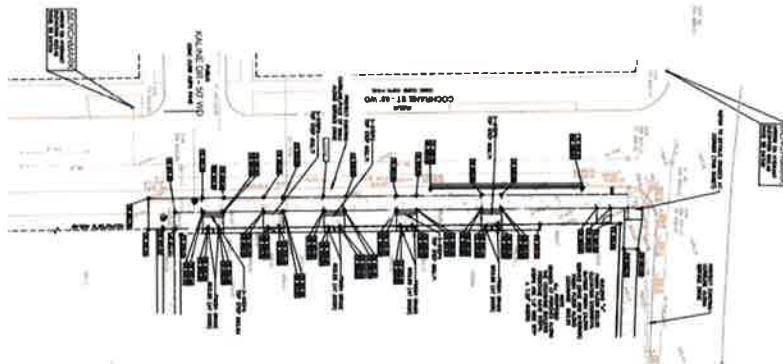
Petition to request encroachment into the easterly portion of Cochrane Ave. for stair access and a concrete slab for a new construction.

Georgine Gersdorff
Manager II
Department of Public Works
City Engineering Division
313-224-3985

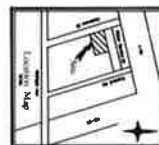


The site plan shows a rectangular building footprint with a parking area to its north. The building is oriented with its long side parallel to Highway 51-66. The parking area is located between the building and Highway 51-66. The plan includes various dimensions and setbacks, such as 10' setbacks from the building to the parking area and 10' setbacks from the parking area to Highway 51-66. The plan also shows the location of the proposed development relative to the surrounding streets and the existing building.

**SITE PLAN AND
ENCROACHMENT LOCATIONS**

ELEVATION OF
ENCROACHMENT LOCATIONS

☐ **Public Information**
☐ **Internal Security**
☐ **Other**



LEFT FIELD DEVELOPMENT
2818 COCHRANE
DETROIT MI, 48201



CITY OF DETROIT
DEPARTMENT OF PUBLIC WORKS
CITY ENGINEERING DIVISION

COLEMAN A. YOUNG MUNICIPAL CENTER
2 WOODWARD AVE. SUITE 601
DETROIT, MICHIGAN 48226
PHONE: (313) 224-3949 TTY: 711
WWW.DETROITMI.GOV

St. Clair Construction

Left Field
Encroachment Petition

Daniel Osborne
St. Clair Construction Company
20250 Harper Avenue
Detroit, Michigan 48225

September 11, 2024

Subject: Encroachment Petition for 2610 Cochrane

City of Detroit:

St. Clair Construction is the General Contractor of the Left Field project located at 2610 Cochrane – which is a multi-family housing project. We have been operating under Right of Way permit ENG-22-1638 and building permits BLD2021-03642 and BLD2022-03368.

Two sides of the building have a zero setback (Cochrane St. and W. Fisher Fwy). On the Cochrane St. side of the building, the approved plans show five stairways (shared between 10 living units) and a concrete pad for an emergency exit.

We are petitioning to locate these stairs, concrete pad and associated landscaping in the right of way. This would be a permanent encroachment.

Thank you,

Daniel Osborne
Project Manager
St. Clair Construction

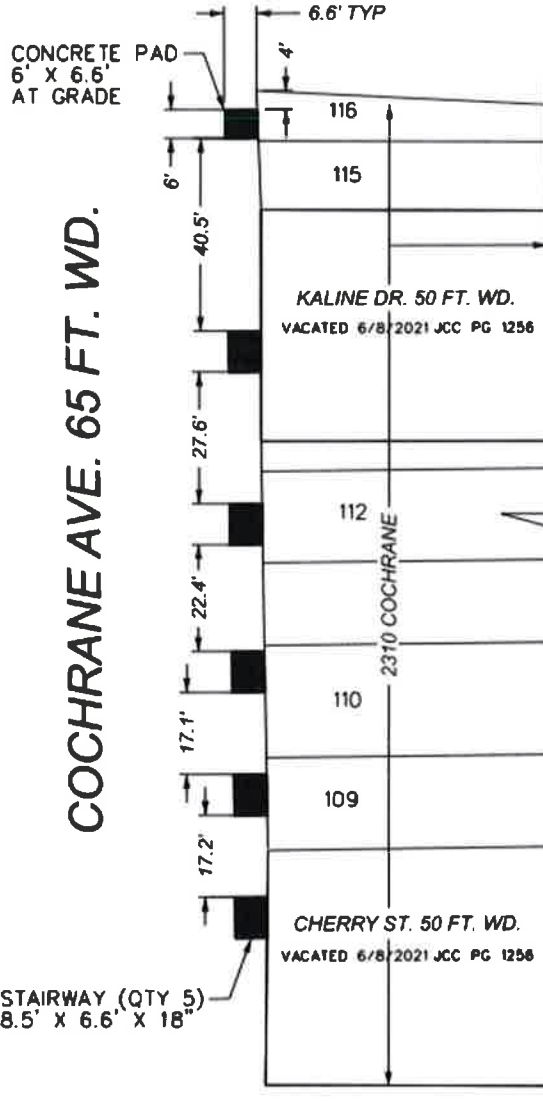


CITY OF DETROIT
DEPARTMENT OF PUBLIC WORKS
CITY ENGINEERING DIVISION

COLEMAN A. YOUNG MUNICIPAL CENTER
2 WOODWARD AVE. SUITE 601
DETROIT, MICHIGAN 48226
PHONE: (313) 224-3949 TTY: 711
WWW.DETROITMI.GOV

MAP-24-141

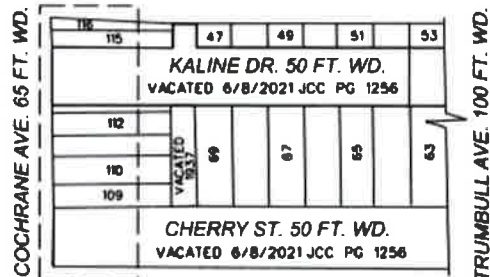
FISHER FREEWAY I-75



TRUMBULL AVE. 100 FT. WD.

COCHRANE AVE. 65 FT. WD.

FISHER FREEWAY I-75



■ - REQUEST ENCROACHMENT
(FOR FIVE STAIRWAYS AND ONE CONCRETE PAD)

(FOR OFFICE USE ONLY)

CARTO 29 D

B					
A					
REVISIONS					
DESCRIPTION	REV	CHK	APP	DATE	
DRAWN BY	LC	CHECKED	AP		
DATE	09-16-2024	APPROVED	RW		

REQUEST ENCROACHMENT ONTO
COCHRANE AVE.
AT 2310 COCHRANE AVE.
BETWEEN CHERRY ST. AND I-75 SERVICE DR.

CITY OF DETROIT
CITY ENGINEERING DIVISION
SURVEY BUREAU

JOB NO. 24-141

DRWG. NO.