

**GENERAL NOTES:**

1. REFERENCE 100% SCHEMATIC PRICING NARRATIVE FOR TYPICAL MATERIAL & CONSTRUCTION SPECIFICATIONS
2. REFERENCE 100% SCHEMATIC PRICING NARRATIVE FOR ALTERNATES
3. REFERENCE 100% SCHEMATIC PRICING NARRATIVE FOR ROOM MATERIAL AND CONSTRUCTION SPECIFICATIONS
4. DRAWINGS ARE PRELIMINARY, REFERENCE 100% SCHEMATIC PRICING NARRATIVE FOR ALL APPLICABLE CODES

**LEGEND:**

—OH—ELEC—W—O—	EX. OH. ELEC. POLE & GUY WIRE
—UG—CATV—	EX. U.G. CABLE TV & PEDESTAL
—UG—COMM—	EX. U.G. COMMUNICATION LINE, PEDESTAL & MANHOLE
—UG—ELEC—	EX. U.G. ELEC. MANHOLE, METER & HANDHOLE
---	EX. GAS LINE
⊙	EX. GAS VALVE & GAS LINE MARKER
⊠	EX. TRANSFORMER & IRRIGATION VALVE
---	EX. WATER MAIN
⊕	EX. HYDRANT, GATE VALVE & POST INDICATOR VALVE
⊖	EX. WATER VALVE BOX & SHUTOFF
---	EX. SANITARY SEWER
⊙	EX. SANITARY CLEANOUT & MANHOLE
⊙	EX. COMBINED SEWER MANHOLE
---	EX. STORM SEWER
⊙	EX. CLEANOUT & MANHOLE
⊙	EX. SQUARE, ROUND & BEEHIVE CATCH BASIN
⊙	EX. YARD DRAIN, U.G. ROOF DRAIN & DOWNSPOUT
⊙	EX. UNIDENTIFIED STRUCTURE
⊙	EX. MAILBOX, SIGN, LIGHTPOLE & GUARD POST
---	EX. FENCE
---	EX. GUARD RAIL
⊙	EX. DEC. TREE, CONIFEROUS TREE & SHRUB
⊙	EX. TREE TAG & TREE LINE
⊙	EX. SPOT ELEVATION
---	EX. CONTOUR
---	EX. WETLAND
⊙	IRON FOUND / SET
⊙	NAIL FOUND / NAIL & CAP SET
⊙	BRASS PLUG SET
⊙	MONUMENT FOUND / SET
⊙	SECTION CORNER FOUND
R M C	RECORDED / MEASURED / CALCULATED

ARCHITECTS  
 TOD WILLIAMS  
 BILLIE T S I E N  
 AND ASSOCIATES

222 CENTRAL PARK SOUTH  
 NEW YORK CITY, NY 10019  
 T 212-562-2985  
 F 212-245-1884  
 E IAH@TWBTA.COM

100% SCHEMATIC DESIGN  
 SEPTEMBER 08, 2023

**REVISIONS**

NO.	DATE	DESCRIPTION

NOT FOR CONSTRUCTION

**DETROIT MUSIC HALL EXPANSION  
 CENTER FOR THE PERFORMING ARTS**

350 MADISON ST., DETROIT, MI 48226

SCALE: 1"=10'

DRAWN BY: PEA GROUP

**TOPOGRAPHIC  
 SURVEY**

**C.001**

MADISON STREET  
(90' WIDTH ROW)

**GENERAL NOTES:**

- REFER TO 100% SD APPENDIX I FOR ARCHITECTURAL, SMFP+FP+IT, AND CIVIL DRAWINGS.
- REFER TO 100% SD APPENDIX II FOR PLAN AND WALL FINISH DESCRIPTIONS.
- REFER TO 100% SD APPENDIX III FOR ADDITIONAL FINISH DESCRIPTIONS.
- REFER TO 100% SD APPENDIX IV FOR PERFORMANCE SPECIFICATIONS AND ALTERNATES.
- REFER TO 100% SD APPENDIX V FOR CODE SUMMARY.

**LEGEND:**

	CONCRETE PAVEMENT
	ASPHALT PAVEMENT
	CONCRETE CURB AND GUTTER
	REVERSE GUTTER PAN
	SETBACK LINE
	SIGN LIGHTPOLE
	FENCE

**GENERAL NOTES:**

THESE NOTES APPLY TO ALL CONSTRUCTION ACTIVITIES ON THIS PROJECT.

- ALL DIMENSIONS SHOWN ARE TO BACK OF CURB, FACE OF SIDEWALK, OUTSIDE FACE OF BUILDING, PROPERTY LINE, CENTER OF MANHOLE/CATCH BASIN OR CENTERLINE OF PIPE UNLESS OTHERWISE NOTED.
- REFER TO NOTES & DETAILS SHEET FOR ON-SITE PAVING DETAILS.

ARCHITECTS  
TOD WILLIAMS  
BILLIE TS'LEN  
AND ASSOCIATES

222 CENTRAL PARK SOUTH  
NEW YORK CITY, NY 10019  
212-682-2985  
212-245-1884  
T F E  
MAIL@TWBTA.COM

100% SCHEMATIC DESIGN  
SEPTEMBER 08, 2023

**REVISIONS**

NO.	DATE	DESCRIPTION

NOT FOR CONSTRUCTION

**DETROIT MUSIC HALL EXPANSION  
CENTER FOR THE PERFORMING ARTS**

350 MADISON ST., DETROIT, MI 48226

SCALE: 1"=10'  
DRAWN BY: PEA GROUP

**PRELIMINARY  
SITE PLAN**

**C.003**

GRAND RIVER AVE.  
(60' WIDTH ROW)

RANDOLPH STREET.  
(40' WIDTH ROW)

300 MADISON  
PARCEL NO.  
01000267-002

N64°E(R) ↑  
160' (R) 159.93'(M)  
N26°00'00"W(R&M)

CURB TO ALLOW TRUCK  
MOVEMENTS

STANDARD DUTY CONCRETE  
PAVEMENT, TYP. REFER TO  
DETAIL ON SHEET C-9.0

LIMITS OF BUILDING BELOW GRADE,  
TYP. REFER TO ARCHITECTURAL  
DRAWINGS FOR ADDITIONAL  
DETAILS, TYP.

LIMITS OF BUILDING BELOW GRADE,  
TYP. REFER TO ARCHITECTURAL  
DRAWINGS FOR ADDITIONAL  
DETAILS, TYP.

DUMPSTER  
ENCLOSURE

DOOR, TYP.

DOOR, TYP.

EXISTING CROSSWALK

PROPOSED PLANTER, TYP.

ADDITIONAL CURBSIDE  
PARKING

CONCRETE SIDEWALK, TYP.

BARRIER FREE PATH, TYP.

12.93'

5'

20'

15.35'

**GENERAL NOTES:**

- REFER TO 100% SD APPENDIX I FOR ARCHITECTURAL, SMFP+FP+IT, AND CIVIL DRAWINGS.
- REFER TO 100% SD APPENDIX II FOR PLAN AND WALL FINISH DESCRIPTIONS.
- REFER TO 100% SD APPENDIX III FOR ADDITIONAL FINISH DESCRIPTIONS.
- REFER TO 100% SD APPENDIX IV FOR PERFORMANCE SPECIFICATIONS AND ALTERNATES.
- REFER TO 100% SD APPENDIX V FOR CODE SUMMARY.

**UTILITY LEGEND:**

—OH—ELEC—	EX. OH. ELEC. POLE & GUY WIRE
—UG—CATV—	EX. U.G. CABLE TV & PEDESTAL
—UG—COMM—	EX. U.G. COMMUNICATION LINE, PEDESTAL & MANHOLE
—UG—ELEC—	EX. U.G. ELEC. MANHOLE, METER & HANDHOLE
—	EX. GAS LINE
⊗	EX. GAS VALVE & GAS LINE MARKER
⊠	EX. TRANSFORMER & IRRIGATION VALVE
—	EX. WATER MAIN
⊕	EX. HYDRANT, GATE VALVE & POST INDICATOR VALVE
⊖	EX. WATER VALVE BOX & SHUTOFF
⊙	EX. SANITARY SEWER
⊗	EX. SANITARY CLEANOUT & MANHOLE
⊘	EX. COMBINED SEWER MANHOLE
⊙	EX. STORM SEWER
⊗	EX. CLEANOUT & MANHOLE
⊘	EX. SQUARE, ROUND, & BEEHIVE CATCH BASIN
⊙	EX. YARD DRAIN & ROOF DRAIN
⊙	EX. UNIDENTIFIED STRUCTURE
—	PROPOSED WATER MAIN
⊕	PROPOSED HYDRANT AND GATE VALVE
⊖	PROPOSED TAPPING SLEEVE, VALVE & WELL
⊙	PROPOSED POST INDICATOR VALVE
—	PROPOSED SANITARY SEWER
⊗	PROPOSED SANITARY CLEANOUT & MANHOLE
⊘	PROPOSED STORM SEWER
⊙	PROPOSED STORM SEWER CLEANOUT & MANHOLE
⊙	PROPOSED CATCH BASIN, INLET & YARD DRAIN

**PREMIUM TRENCH BACKFILL NOTE:**  
 ALL UTILITIES UNDER PAVEMENT OR WITHIN 3' OF THE EDGE OF PAVEMENT (OR WITHIN THE 45' LINE OF INFLUENCE OF PAVEMENT) SHALL HAVE M.D.O.T. CLASS II GRANULAR BACKFILL COMPACTED TO 95% MAX. DRY DENSITY (ASTM D-1557).

**REFER TO:**  
 UTILITY NOTES AND DETAILS ON SHEET C-9.0

**NOTE:**  
 CONTRACTOR TO VERIFY ALL QUANTITIES. ANY DEVIATIONS TO THE PLAN QUANTITIES SHALL BE BROUGHT TO THE ATTENTION OF PE GROUP FOR VERIFICATION, PRIOR TO BIDDING.

ARCHITECTS  
 TOD WILLIAMS  
 BILLIE T S I E N  
 AND ASSOCIATES  
 222 CENTRAL PARK SOUTH  
 NEW YORK CITY, NY 10019  
 T 212-562-2985  
 F 212-245-1884  
 E twh@twbta.com

100% SCHEMATIC DESIGN  
 SEPTEMBER 08, 2023

**REVISIONS**

NO.	DATE	DESCRIPTION

NOT FOR CONSTRUCTION

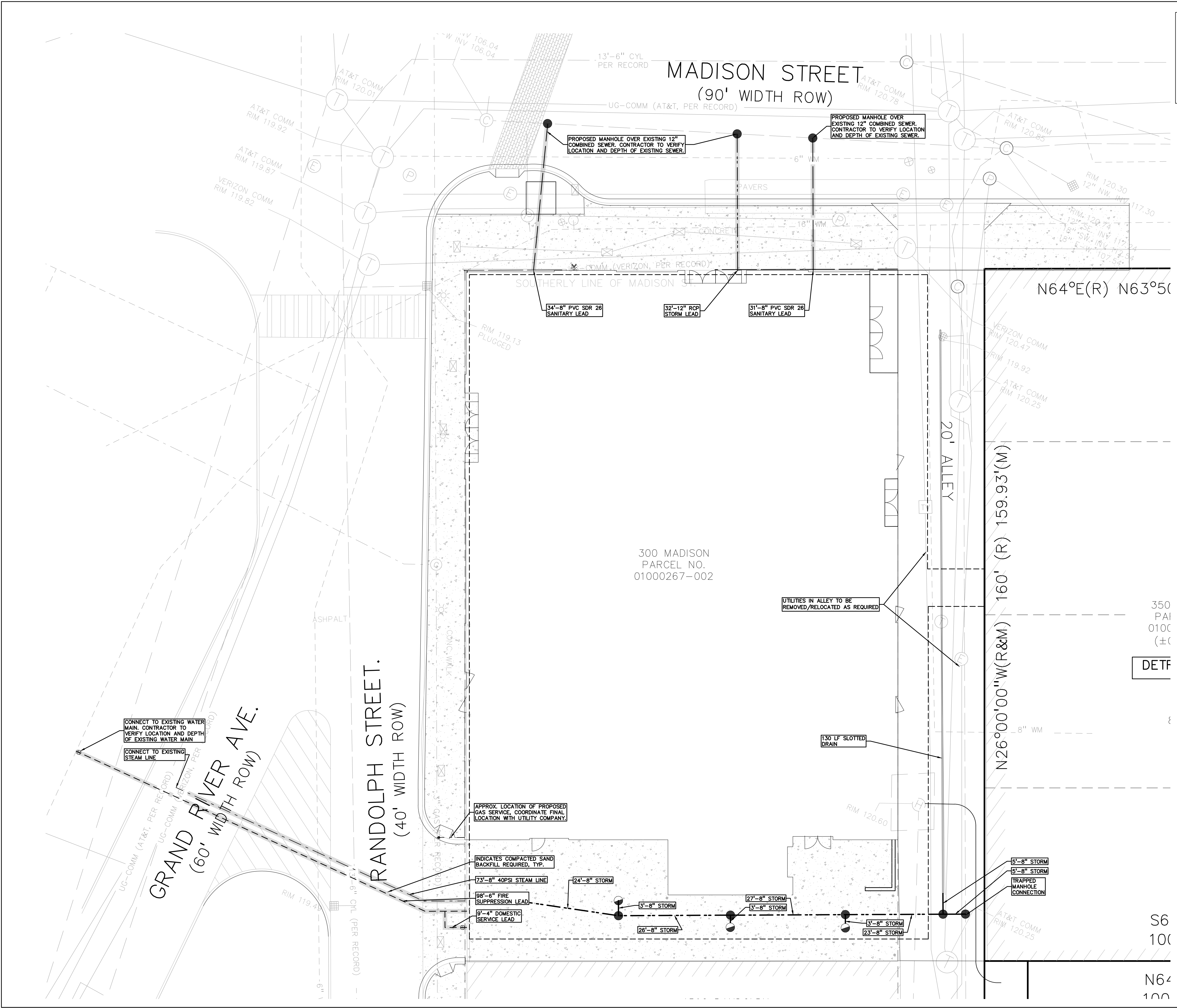
**DETROIT MUSIC HALL EXPANSION  
 CENTER FOR THE PERFORMING ARTS**  
 350 MADISON ST., DETROIT, MI 48226

SCALE: 1"=10'

DRAWN BY: PE A GROUP

**PRELIMINARY  
 UTILITY PLAN**

**C.006**



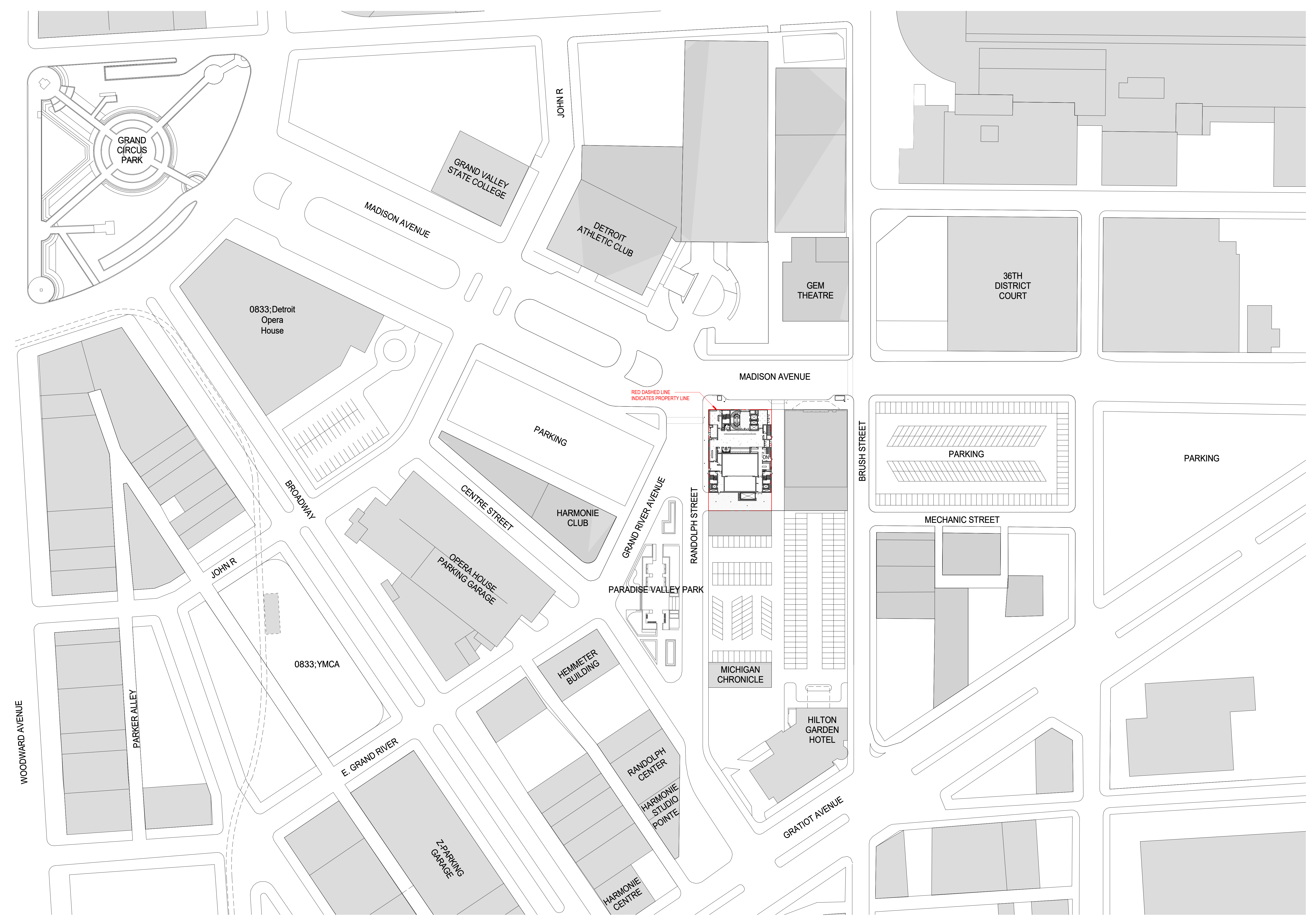
350  
 PAI  
 010C  
 (±)  
 DETF

S6  
 10C  
 N64  
 100

- GENERAL NOTES:**
1. REFER TO 100% SD APPENDIX I FOR ARCHITECTURAL, S MEP-FP-IT, AND CIVIL DRAWINGS.
  2. REFER TO 100% SD APPENDIX II FOR PLAN AND WALL FINISH DESCRIPTIONS.
  3. REFER TO 100% SD APPENDIX III FOR ADDITIONAL FINISH DESCRIPTIONS.
  4. REFER TO 100% SD APPENDIX IV FOR PERFORMANCE SPECIFICATIONS AND ALTERNATES.
  5. REFER TO 100% SD APPENDIX V FOR CODE SUMMARY.
  6. ALL EXISTING UTILITIES AND SITE CONDITIONS, INCLUDING BUT NOT LIMITED TO NEIGHBORING STRUCTURES, MUST BE VERIFIED IN FIELD PRIOR TO CONSTRUCTION.
  7. ALL PROPOSED SCOPE ADJACENT TO (OR ENCRoACHING UPON) EXISTING ELEMENTS REQUIRE APPROVAL FROM RELEVANT GOVERNING BODIES.
  8. SEICANT WALL DESIGN SCOPE IS FOR REFERENCE ONLY AND MUST BE DIMENSIONALLY CONFIRMED AND FURTHER DEVELOPED BY ERS SUBCONTRACTOR.

225 CLEVELAND PARK DRIVE  
NEW YORK, NY 10019  
T 212.562.2385  
F 212.562.2386  
E [info@twilliams.com](mailto:info@twilliams.com)

TOD WILLIAMS  
BILLIE TRSIEN  
ARCHITECTS, LLP



2 SITE CONTEXT PLAN - L1 STREET  
SCALE: 1/8" = 1'-0"

100% SCHEMATIC DESIGN  
SEPTEMBER 08, 2023  
REVISIONS

NOT FOR CONSTRUCTION

DETROIT MUSIC HALL EXPANSION  
CENTER FOR THE PERFORMING ARTS  
350 JACOBSON ST. DETROIT, MI 48226

DWN BY: TWBTA  
SCALE: As indicated

SITE CONTEXT  
PLAN

A.001

MADISON AVENUE

GEM THEATRE

MADISON AVENUE

BRUSH STREET

MECHANIC STREET

HARMONIE CLUB

GRAND RIVER AVENUE

PARADISE VALLEY PARK

RANDOLPH STREET

LA CASA CIGAR LOUNGE

EXISTING MUSIC HALL MATILDA BUILDING

- GENERAL NOTES:**
1. REFER TO 100% SD APPENDIX I FOR ARCHITECTURAL, S MEP-FP-IT, AND CIVIL DRAWINGS.
  2. REFER TO 100% SD APPENDIX II FOR PLAN AND WALL FINISH DESCRIPTIONS.
  3. REFER TO 100% SD APPENDIX III FOR ADDITIONAL FINISH DESCRIPTIONS.
  4. REFER TO 100% SD APPENDIX IV FOR PERFORMANCE SPECIFICATIONS AND ALTERNATES.
  5. REFER TO 100% SD APPENDIX V FOR CODE SUMMARY.
  6. ALL EXISTING UTILITIES AND SITE CONDITIONS, INCLUDING BUT NOT LIMITED TO NEIGHBORING STRUCTURES, MUST BE VERIFIED IN FIELD PRIOR TO CONSTRUCTION.
  7. ALL PROPOSED SCOPE ADJACENT TO (OR ENCRDACHING UPON) EXISTING STRUCTURES REQUIRE APPROVAL FROM RELEVANT GOVERNING BODIES.
  8. SEICANT WALL DESIGN SCOPE IS FOR REFERENCE ONLY AND MUST BE DIMENSIONALLY CONFIRMED AND FURTHER DEVELOPED BY ERS SUBCONTRACTOR.

TOD WILLIAMS  
 BILLIE TRSIEN  
 ARCHITECTS, LLP

255 CLEVELAND PARK DRIVE  
 NEW YORK, NY 10019  
 T 212.562.2885  
 F 212.562.2886  
 E info@twi.com

100% SCHEMATIC DESIGN  
 SEPTEMBER 08, 2023  
 REVISIONS

NOT FOR CONSTRUCTION

DETROIT MUSIC HALL EXPANSION  
 CENTER FOR THE PERFORMING ARTS

350 JACOBSON ST. DETROIT, MI 48226

DWN BY: TWBTA  
 SCALE: As indicated

SITE PLAN

A.002

- GENERAL NOTES:**
- REFER TO 100% SD APPENDIX I FOR ARCHITECTURAL, S MEP-FP-HT, AND CIVIL DRAWINGS.
  - REFER TO 100% SD APPENDIX II FOR PLAN AND WALL FINISH DESCRIPTIONS.
  - REFER TO 100% SD APPENDIX III FOR ADDITIONAL FINISH DESCRIPTIONS.
  - REFER TO 100% SD APPENDIX IV FOR PERFORMANCE SPECIFICATIONS AND ALTERNATES.
  - REFER TO 100% SD APPENDIX V FOR CODE SUMMARY.
  - ALL EXISTING UTILITIES AND SITE CONDITIONS, INCLUDING BUT NOT LIMITED TO NEIGHBORING STRUCTURES, MUST BE VERIFIED IN FIELD PRIOR TO CONSTRUCTION.
  - ALL PROPOSED SCOPE ADJACENT TO (OR ENCRoACHING UPON) EXISTING CASINOS REQUIRE APPROVAL FROM RELEVANT GOVERNING BODIES.
  - SEATING WALL DESIGN SCOPE IS FOR REFERENCE ONLY AND MUST BE DIMENSIONALLY CONFIRMED AND FURTHER DEVELOPED BY ERS SUBCONTRACTOR.

- LEGEND**
- C30 FLOORS:**
- CN-1 STAINED CONCRETE
  - CN-2 SCORED CONCRETE
  - PF-1 PAINT OR SEALER
  - PF-2 EPOXY COATING
  - STN-1 STONE PAVERS
  - STN-2 STONE TREADS AND RISERS
  - TL-1 FLOOR TILE
  - ET-1 EPOXY TERRAZZO
  - ET-2 EPOXY TERRAZZO TREADS
  - WD-1 WOOD
  - WD-2 WOOD
  - SF-1 PERFORMANCE PLATFORM
  - CPT-1 CARPET
  - CPT-2 CARPET
  - CPT-3 WALK-OFF MAT
  - L1 LINOLEUM
- C30 WALLS:**
- CN-1 STAINED CONCRETE
  - STN-1 STONE CLADDING
  - PF-1 PAINT
  - PF-2 INTUMESCENT PAINT
  - CT-1 CERAMIC TILE
  - CT-2 CERAMIC TILE
  - BRK-1 INTERIOR BRICK CLADDING
  - MTL-1 FIXED METAL PANEL
  - AP-1 ACOUSTICAL WALL PANEL
  - AP-2 ACOUSTICAL WALL PANEL W/ WOOD BATTEN OVERLAY
  - BLK-1 CMU
  - PL-1 FIBER REINFORCED PLASTIC
  - TEX-1 TEXTILE WALL COVERING
  - WD-1 ARTICULATED WOOD PANEL A
  - WD-2 ARTICULATED WOOD PANEL B
- C10 INTERIOR CONSTRUCTION:**
- VASG VERTICAL ACTING SECURITY GATE
- GLASS:**
- GL-AF ACOUSTIC/FIRE RATED GLASS ASSEMBLY
  - GL-A ACOUSTIC RATED GLASS ASSEMBLY
  - GL-S SMOKE RATED GLASS ASSEMBLY
  - GLR-1 INTERIOR GUARDRAIL
  - GLR-2 INTERIOR GUARDRAIL
- R00 EXTERIOR ENCLOSURE:**
- EXT STN-1 STONE PANELS
  - EXT MTL-1 METAL CLADDING
  - EXT MTL-2 EXTERIOR FIRE RESISTANT METAL PANEL
  - EXT PLST-1 EXTERIOR HARD COAT STUCCO
  - EXT BRK-1 EXTERIOR BRICK CLADDING
  - EXT CW-1 CURTAIN WALL SYSTEM A (BUILDING STREET & ROOF TOP W/ IN-S)
  - EXT CW-2 CURTAIN WALL SYSTEM B (BUILDING BODY)
  - EXT CW-3 CURTAIN WALL SYSTEM C (RECTAL HALL GLAZING)
  - EXT RS-1 EXTERIOR ORNAMENTAL METAL SCREEN
  - EXT GLR-01 EXTERIOR GLASS GUARDRAIL

TOD WILLIAMS  
BILLIE TRIEN  
ARCHITECTS, LLP

100% SCHEMATIC DESIGN  
SEPTEMBER 08, 2023  
REVISIONS

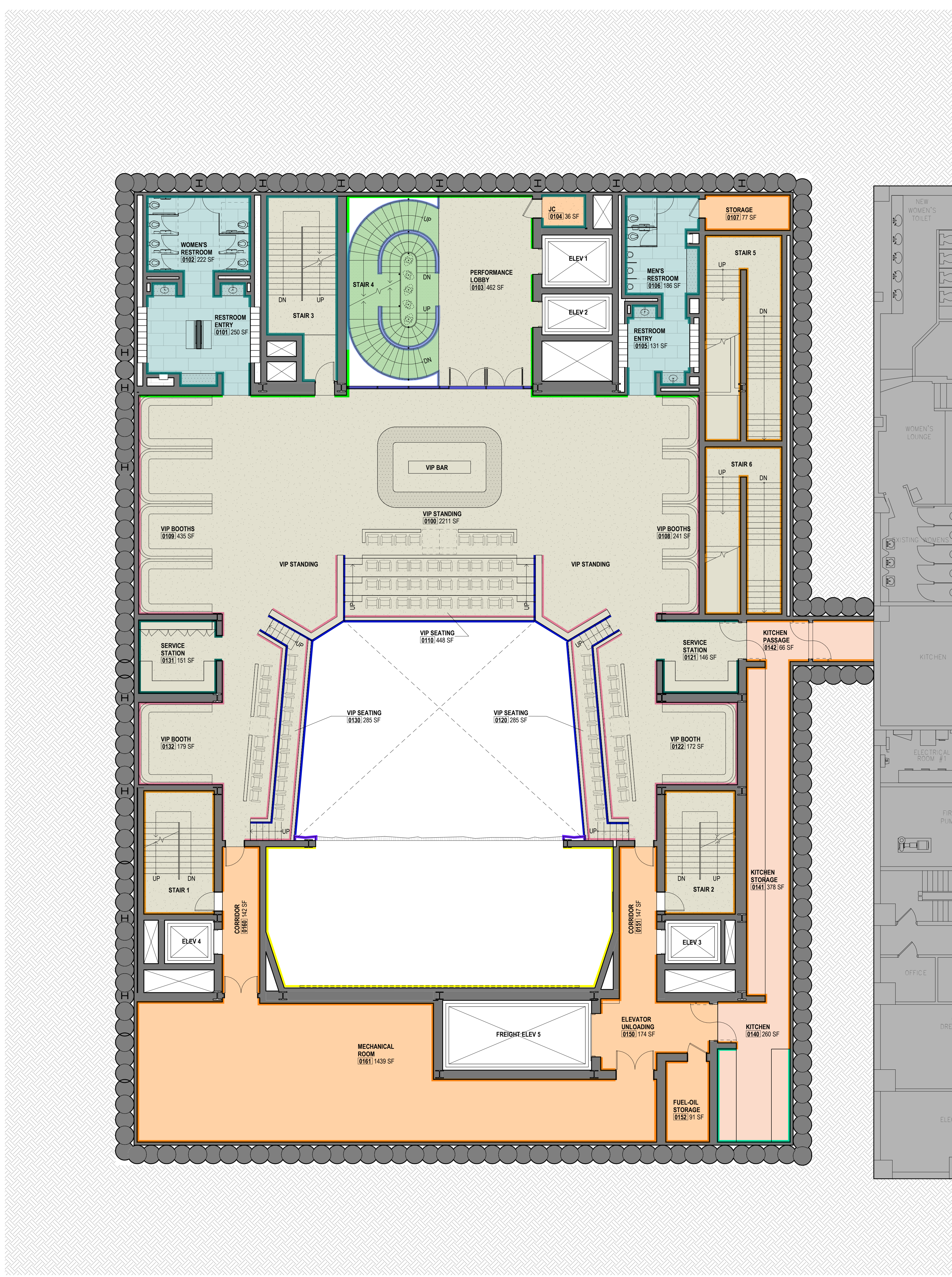
NOT FOR CONSTRUCTION

DETROIT MUSIC HALL EXPANSION  
CENTER FOR THE PERFORMING ARTS  
350 JACKSON ST. DETROIT, MI 48226

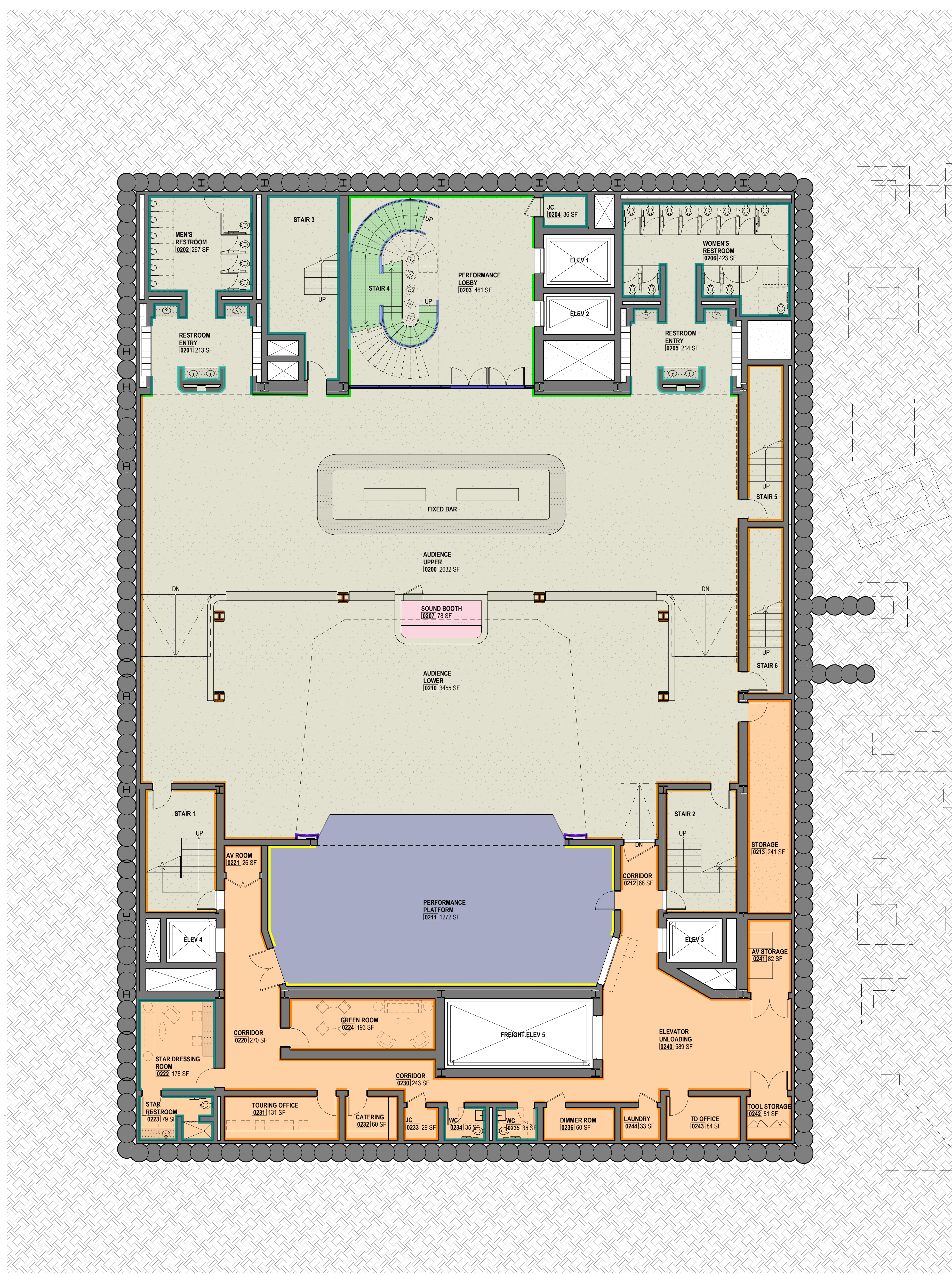
DWN BY: TWBTA  
SCALE: As indicated  
LL-2 PERFORMANCE & LL-1 VIP FINISH PLANS

APPENDIX II

A.110



2 LL-1 VIP FINISH PLAN  
SCALE: 1/8" = 1'-0"



1 LL-2 PERFORMANCE FINISH PLAN  
SCALE: 1/8" = 1'-0"

- GENERAL NOTES:**
- REFER TO 100% SD APPENDIX I FOR ARCHITECTURAL, S MEP-FP-IT, AND CIVIL DRAWINGS.
  - REFER TO 100% SD APPENDIX II FOR PLAN AND WALL FINISH DESCRIPTIONS.
  - REFER TO 100% SD APPENDIX III FOR ADDITIONAL FINISH DESCRIPTIONS.
  - REFER TO 100% SD APPENDIX IV FOR PERFORMANCE SPECIFICATIONS AND ALTERNATES.
  - REFER TO 100% SD APPENDIX V FOR CODE SUMMARY.
  - ALL EXISTING UTILITIES AND SITE CONDITIONS, INCLUDING BUT NOT LIMITED TO NEIGHBORING STRUCTURES, MUST BE VERIFIED IN FIELD PRIOR TO CONSTRUCTION.
  - ALL PROPOSED SCOPE ADJACENT TO (OR ENCRANCHING UPON) EXISTING ELEMENTS REQUIRES APPROVAL FROM RELEVANT GOVERNING BODIES.
  - SEMI-WALL DESIGN SCOPE IS FOR REFERENCE ONLY AND MUST BE DIMENSIONALLY CONFIRMED AND FURTHER DEVELOPED BY ERS SUBCONTRACTOR.

**LEGEND**

**C30 FLOORS:**

- CN-1 STAINED CONCRETE
- CN-2 SCORED CONCRETE
- PF-1 PAINT OR SEALER
- PF-2 EPOXY COATING
- STN-1 STONE PAVERS
- STN-2 STONE TREADS AND RISERS
- TL-1 FLOOR TILE
- ET-1 EPOXY TERRAZZO
- ET-2 EPOXY TERRAZZO TREADS
- WD-1 WOOD
- WD-2 WOOD
- SF-1 PERFORMANCE PLATFORM
- CPT-1 CARPET
- CPT-2 CARPET
- CPT-3 WALK OFF MAT
- L1-1 LINOLEUM

**C30 WALLS:**

- CN-1 STAINED CONCRETE
- STN-1 STONE CLADDING
- PF-1 PAINT
- PF-2 INTUMESCENT PAINT
- CT-1 CERAMIC TILE
- CT-2 CERAMIC TILE
- BRK-1 INTERIOR BRICK CLADDING
- MTL-1 FIXED METAL PANEL
- AP-1 ACOUSTICAL WALL PANEL
- AP-2 ACOUSTICAL WALL PANEL W/ WOOD BATTEN OVERLAY
- BLK-1 CMU
- PL-1 FIBER REINFORCED PLASTIC
- TEX-1 TEXTILE WALL COVERING
- WD-1 ARTICULATED WOOD PANEL A
- WD-2 ARTICULATED WOOD PANEL B

**C10 INTERIOR CONSTRUCTION:**

- VASG VERTICAL ACTING SECURITY GATE
- GL-1F ACOUSTIC/FIRE RATED GLASS ASSEMBLY
- GL-2 ACOUSTIC RATED GLASS ASSEMBLY
- GL-3 SMOKE RATED GLASS ASSEMBLY
- GLR-1 INTERIOR GUARDRAIL
- GLR-2 INTERIOR GUARDRAIL

**R00 EXTERIOR ENCLOSURE:**

- EXT STN-1 STONE PANELS
- EXT MTL-1 METAL CLADDING
- EXT EX-1 EXTERIOR FIRE RESISTANT METAL PANEL
- EXT PLST-1 EXTERIOR HARD COAT STUCCO
- EXT BRK-1 EXTERIOR BRICK CLADDING
- EXT CW-1 CURTAIN WALL SYSTEM A (BUILDING STREET & ROOF TOP LINEN)
- EXT CW-2 CURTAIN WALL SYSTEM B (BUILDING BODY)
- EXT CW-3 CURTAIN WALL SYSTEM C (RECREAL HALL GLAZING)
- EXT RS-1 EXTERIOR ORNAMENTAL METAL SCREEN
- EXT GLR-1B EXTERIOR GLASS GUARDRAIL

255 CENTRAL PARKWAY  
NEW YORK, NY 10019  
T 212.562.2885  
F 212.562.4200  
E info@twilliams.com

**TOD WILLIAMS  
BILLIE TRIBEN  
ARCHITECTS, LLP**

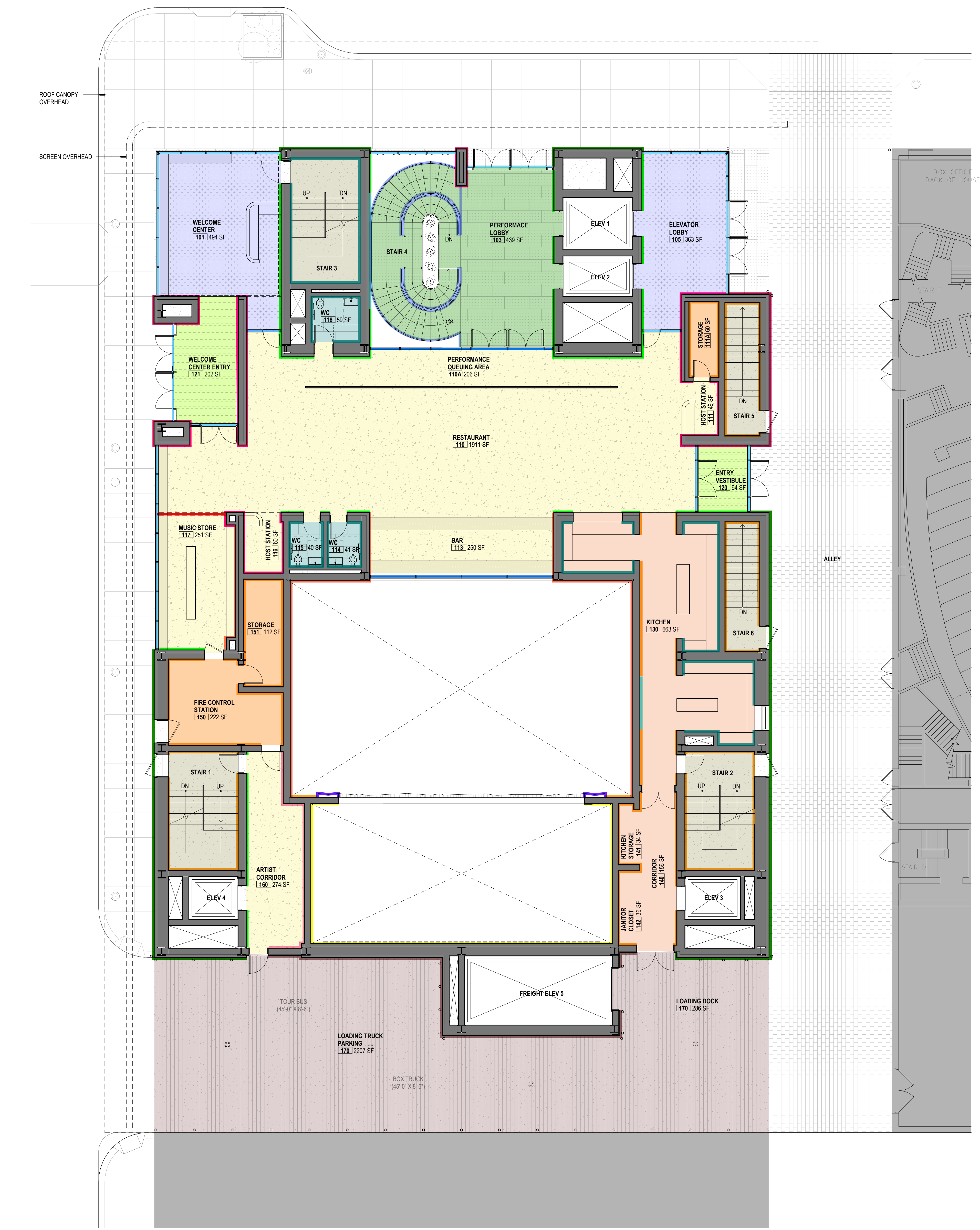
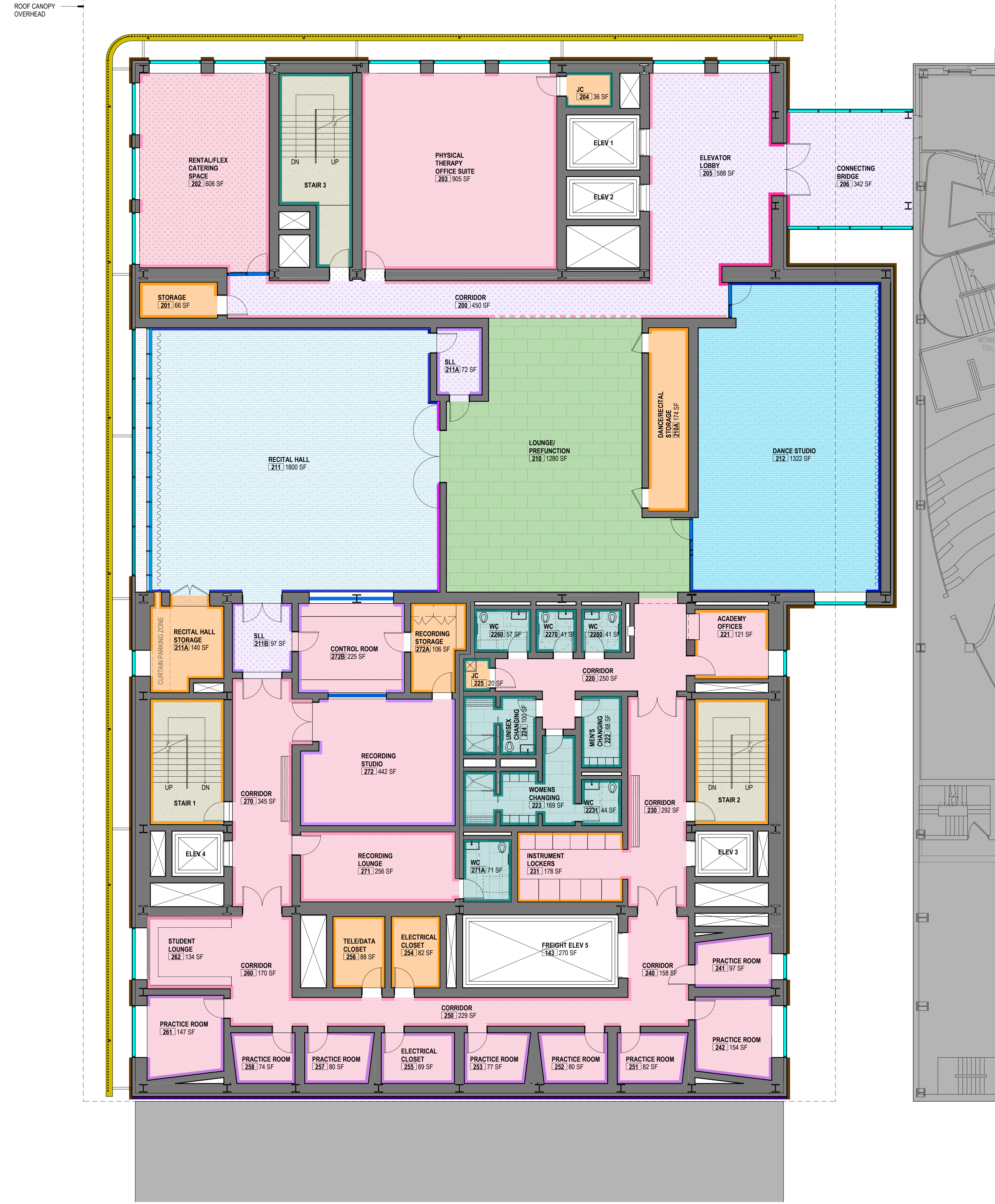
100% SCHEMATIC DESIGN  
SEPTEMBER 08, 2023  
REVISIONS

NOT FOR CONSTRUCTION

**DETROIT MUSIC HALL EXPANSION  
CENTER FOR THE PERFORMING ARTS**  
350 JACKSON ST. DETROIT, MI 48226

DWNN BY: TWBTA  
SCALE: As Indicated  
**L1 STREET & L2  
MUSIC ACADEMY  
FINISH PLANS**  
APPENDIX II

**A.111**



- GENERAL NOTES:**
- REFER TO 100% SD APPENDIX I FOR ARCHITECTURAL, S MEP-FP-IT, AND CIVIL DRAWINGS.
  - REFER TO 100% SD APPENDIX II FOR PLAN AND WALL FINISH DESCRIPTIONS.
  - REFER TO 100% SD APPENDIX III FOR ADDITIONAL FINISH DESCRIPTIONS.
  - REFER TO 100% SD APPENDIX IV FOR PERFORMANCE SPECIFICATIONS AND ALTERNATES.
  - REFER TO 100% SD APPENDIX V FOR CODE SUMMARY.
  - ALL EXISTING UTILITIES AND SITE CONDITIONS, INCLUDING BUT NOT LIMITED TO NEIGHBORING STRUCTURES, MUST BE VERIFIED IN FIELD PRIOR TO CONSTRUCTION.
  - ALL PROPOSED SCOPE ADJACENT TO (OR ENCRoACHING UPON) EXISTING EASEMENTS REQUIRES APPROVAL FROM RELEVANT GOVERNING BODIES.
  - SEAMANT WALL DESIGN SCOPE IS FOR REFERENCE ONLY AND MUST BE DIMENSIONALLY CONFIRMED AND FURTHER DEVELOPED BY ERS SUBCONTRACTOR.

- KEYNOTE LEGEND**
- C30 FLOORS:**
- CN-1 STAINED CONCRETE
  - CN-2 SCORED CONCRETE
  - PF-1 PAINT OR SEALER
  - PF-2 EPOXY COATING
  - STN-1 STONE PAVERS
  - STN-2 STONE TREADS AND RISERS
  - TL-1 FLOOR TILE
  - ET-1 EPOXY TERRAZZO
  - ET-2 EPOXY TERRAZZO TREADS
  - WD-1 WOOD
  - WD-2 WOOD
  - SF-1 PERFORMANCE PLATFORM
  - CPT-1 CARPET
  - CPT-2 CARPET
  - CPT-3 WALK-OFF MAT
  - L1 LINOLEUM
- C30 WALLS:**
- STN-1 STONE CLADDING
  - PF-1 PAINT
  - PF-2 INTUMESCENT PAINT
  - CT-1 CERAMIC TILE
  - CT-2 CERAMIC TILE
  - BRK-1 INTERIOR BRICK CLADDING
  - MTL-1 FIXED METAL PANEL
  - AP-1 ACOUSTICAL WALL PANEL
  - AP-2 ACOUSTICAL WALL PANEL W/ WOOD BATTEN OVERLAY
  - BLK-1 CMU
  - PL-1 FIBER REINFORCED PLASTIC
  - TEX-1 TEXTILE WALL COVERING
  - WD-1 ARTICULATED WOOD PANEL A
  - WD-2 ARTICULATED WOOD PANEL B
- C10 INTERIOR CONSTRUCTION:**
- VASG VERTICAL ACTING SECURITY GATE
- GLASS:**
- GL-AF ACOUSTIC/FIRE RATED GLASS ASSEMBLY
  - GL-A ACOUSTIC RATED GLASS ASSEMBLY
  - GL-S SMOKE RATED GLASS ASSEMBLY
  - GLR-1 INTERIOR GUARDRAIL
  - GLR-2 INTERIOR GUARDRAIL
- R00 EXTERIOR ENCLOSURE:**
- EXT STN-1 STONE PANELS
  - EXT MTL-1 METAL CLADDING
  - EXT MTL-2 EXTERIOR FIRE RESISTANT METAL PANEL
  - EXT PLST-1 EXTERIOR HARD COAT STUCCO
  - EXT BRK-1 EXTERIOR BRICK CLADDING
  - EXT CW-1 CURTAIN WALL SYSTEM A (BUILDING STREET & ROOF TOP IN USE)
  - EXT CW-2 CURTAIN WALL SYSTEM B (BUILDING BODY)
  - EXT CW-3 CURTAIN WALL SYSTEM C (ROOF HALL GLAZING)
  - EXT RS-1 EXTERIOR ORNAMENTAL METAL SCREEN
  - EXT GLR-01 EXTERIOR GLASS GUARDRAIL

250 CLEVELAND PARK DRIVE  
NEW YORK, NY 10019  
T 212.562.2885  
F 212.562.2886  
E info@twilliams-architects.com

**TOD WILLIAMS  
BILLIE TRIEN  
ARCHITECTS, LLP**

100% SCHEMATIC DESIGN  
SEPTEMBER 08, 2023  
REVISIONS

NOT FOR CONSTRUCTION

**DETROIT MUSIC HALL EXPANSION  
CENTER FOR THE PERFORMING ARTS**  
350 JACKSON ST. DETROIT, MI 48226

DWN BY: TWBTA  
SCALE: As indicated

**L3 OFFICES & L4  
OFFICES FINISH  
PLANS**

APPENDIX II

**A.112**



2 L4 OFFICE 2 FINISH PLAN  
SCALE: 1/8" = 1'-0"



1 L3 OFFICE 1 FINISH PLAN  
SCALE: 1/8" = 1'-0"



- GENERAL NOTES:**
- REFER TO 100% SD APPENDIX I FOR ARCHITECTURAL, S MEP-FP-IT, AND CIVIL DRAWINGS.
  - REFER TO 100% SD APPENDIX II FOR PLAN AND WALL FINISH DESCRIPTIONS.
  - REFER TO 100% SD APPENDIX III FOR ADDITIONAL FINISH DESCRIPTIONS.
  - REFER TO 100% SD APPENDIX IV FOR PERFORMANCE SPECIFICATIONS AND ALTERNATES.
  - REFER TO 100% SD APPENDIX V FOR CODE SUMMARY.
  - ALL EXISTING UTILITIES AND SITE CONDITIONS, INCLUDING BUT NOT LIMITED TO NEIGHBORING STRUCTURES, MUST BE VERIFIED IN FIELD PRIOR TO CONSTRUCTION.
  - ALL PROPOSED SCOPE ADJACENT TO (OR ENCRoACHING UPON) EXISTING EASEMENTS REQUIRES APPROVAL FROM RELEVANT GOVERNING BODIES.
  - SEALANT WALL DESIGN SCOPE IS FOR REFERENCE ONLY AND MUST BE DIMENSIONALLY CONFIRMED AND FURTHER DEVELOPED BY ERS SUBCONTRACTOR.

- LEGEND**
- C30 FLOORS:**
- CN-1 STAINED CONCRETE
  - CN-2 SCORED CONCRETE
  - PF-1 PAINT OR SEALER
  - PF-2 EPOXY COATING
  - STN-1 STONE PAVERS
  - STN-2 STONE TREADS AND RISERS
  - TL-1 FLOOR TILE
  - ET-1 EPOXY TERRAZZO
  - ET-2 EPOXY TERRAZZO TREADS
  - WD-1 WOOD
  - WD-2 WOOD
  - STF-1 PERFORMANCE PLATFORM
  - CPT-1 CARPET
  - CPT-2 CARPET
  - CPT-3 WALK OFF MAT
  - L1-1 LINOLEUM
- C30 WALLS:**
- STN-1 STONE CLADDING
  - PF-1 PAINT
  - PF-2 INTUMESCENT PAINT
  - CT-1 CERAMIC TILE
  - CT-2 CERAMIC TILE
  - BRK-1 INTERIOR BRICK CLADDING
  - MTL-1 FIXED METAL PANEL
  - AP-1 ACOUSTICAL WALL PANEL
  - AP-2 ACOUSTICAL WALL PANEL W/ WOOD BATTEN OVERLAY
  - BLK-1 CMU
  - PL-1 FIBER REINFORCED PLASTIC
  - TEX-1 TEXTILE WALL COVERING
  - WD-1 ARTICULATED WOOD PANEL A
  - WD-2 ARTICULATED WOOD PANEL B
- C10 INTERIOR CONSTRUCTION:**
- VASG VERTICAL ACTING SECURITY GATE
- GLASS:**
- GL-AF ACOUSTIC/FIRE RATED GLASS ASSEMBLY
  - GL-A ACOUSTIC RATED GLASS ASSEMBLY
  - GL-S SMOKE RATED GLASS ASSEMBLY
  - GLR-1 INTERIOR GUARDRAIL
  - GLR-2 INTERIOR GUARDRAIL
- R00 EXTERIOR ENCLOSURE:**
- EXT STN-1 STONE PANELS
  - EXT MTL-1 METAL CLADDING
  - EXT MTL-2 EXTERIOR FIRE RESISTANT METAL PANEL
  - EXT PLST-1 EXTERIOR HARD COAT STUCCO
  - EXT BRK-1 EXTERIOR BRICK CLADDING
  - EXT CW-1 CURTAIN WALL SYSTEM A (BUILDING STREET & ROOF TOP W/ S)
  - EXT CW-2 CURTAIN WALL SYSTEM B (BUILDING BODY)
  - EXT CW-3 CURTAIN WALL SYSTEM C (RECTAL WALL GLAZING)
  - EXT RS-1 EXTERIOR ORNAMENTAL METAL SCREEN
  - EXT GLR-01 EXTERIOR GLASS GUARDRAIL

TOD WILLIAMS  
BILLIE TRIEN  
ARCHITECTS, LLP

100% SCHEMATIC DESIGN  
SEPTEMBER 08, 2023  
REVISIONS

NOT FOR CONSTRUCTION

DETROIT MUSIC HALL EXPANSION  
CENTER FOR THE PERFORMING ARTS  
350 JACKSON ST. DETROIT, MI 48226

DWN BY: TWBTA  
SCALE: As indicated

L5 RESTAURANT &  
L6 MECH ROOF  
FINISH PLANS

APPENDIX II

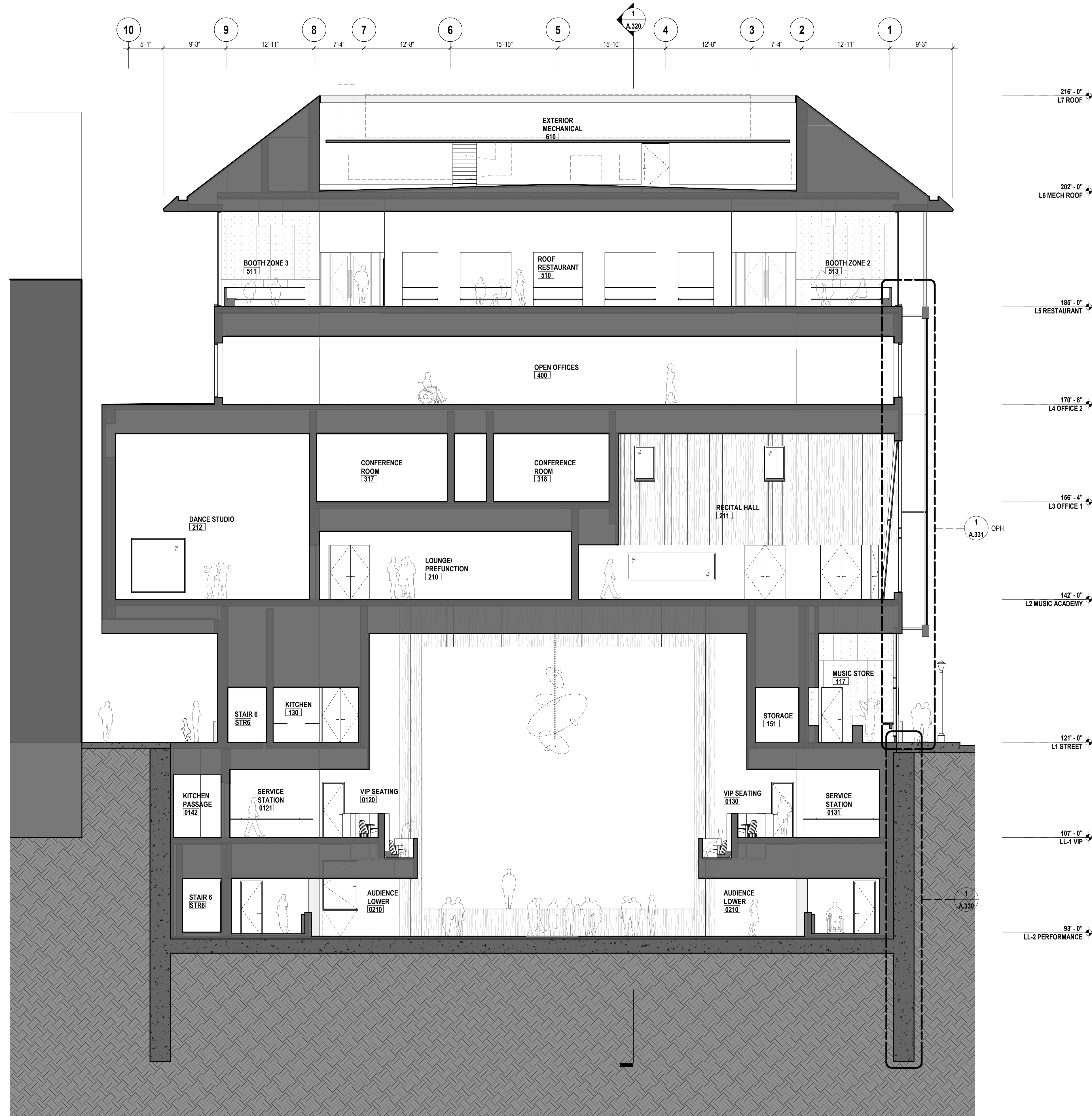
A.113

1 L5 RESTAURANT FINISH PLAN  
SCALE: 1/8" = 1'-0"



- GENERAL NOTES:**
1. REFER TO 100% SD APPENDIX I FOR ARCHITECTURAL, S MEP-FP-IT, AND CIVIL DRAWINGS.
  2. REFER TO 100% SD APPENDIX II FOR PLAN AND WALL FINISH DESCRIPTIONS.
  3. REFER TO 100% SD APPENDIX III FOR ADDITIONAL FINISH DESCRIPTIONS.
  4. REFER TO 100% SD APPENDIX IV FOR PERFORMANCE SPECIFICATIONS AND ALTERNATES.
  5. REFER TO 100% SD APPENDIX V FOR CODE SUMMARY.
  6. ALL EXISTING UTILITIES AND SITE CONDITIONS, INCLUDING BUT NOT LIMITED TO NEIGHBORING STRUCTURES, MUST BE VERIFIED IN FIELD PRIOR TO CONSTRUCTION.
  7. ALL PROPOSED SCOPE ADJACENT TO (OR ENCRoACHING UPON) EXISTING CASSEMENTS REQUIRE APPROVAL FROM RELEVANT GOVERNING BODIES.
  8. SEEDANT WALL DESIGN SCOPE IS FOR REFERENCE ONLY AND MUST BE DIMENSIONALLY CONFIRMED AND FURTHER DEVELOPED BY ERS SUBCONTRACTOR.

TOD WILLIAMS  
 BILLIE TSIBEN  
 ARCHITECTS, LLP



2 SECTION - EW PERFORMANCE  
 SCALE: 1/8" = 1'-0"



1 SECTION - EW LOBBY  
 SCALE: 1/8" = 1'-0"

100% SCHEMATIC DESIGN  
 SEPTEMBER 08, 2023

REVISIONS

NOT FOR CONSTRUCTION

DETROIT MUSIC HALL EXPANSION  
 CENTER FOR THE PERFORMING ARTS  
 350 JACKSON ST. DETROIT, MI 48226

DWN BY: TWBTA  
 SCALE: As Indicated  
 BUILDING SECTION -  
 EW LOBBY &  
 PERFORMANCE

A.321