

- GENERAL NOTES:**
- REFER TO 100% SD APPENDIX I FOR ARCHITECTURAL, SMEP+FP+IT, AND CIVIL DRAWINGS.
 - REFER TO 100% SD APPENDIX II FOR PLAN AND WALL FINISH DESCRIPTIONS.
 - REFER TO 100% SD APPENDIX III FOR ADDITIONAL FINISH DESCRIPTIONS.
 - REFER TO 100% SD APPENDIX IV FOR PERFORMANCE SPECIFICATIONS AND ALTERNATES.
 - REFER TO 100% SD APPENDIX V FOR CODE SUMMARY.

UTILITY LEGEND:

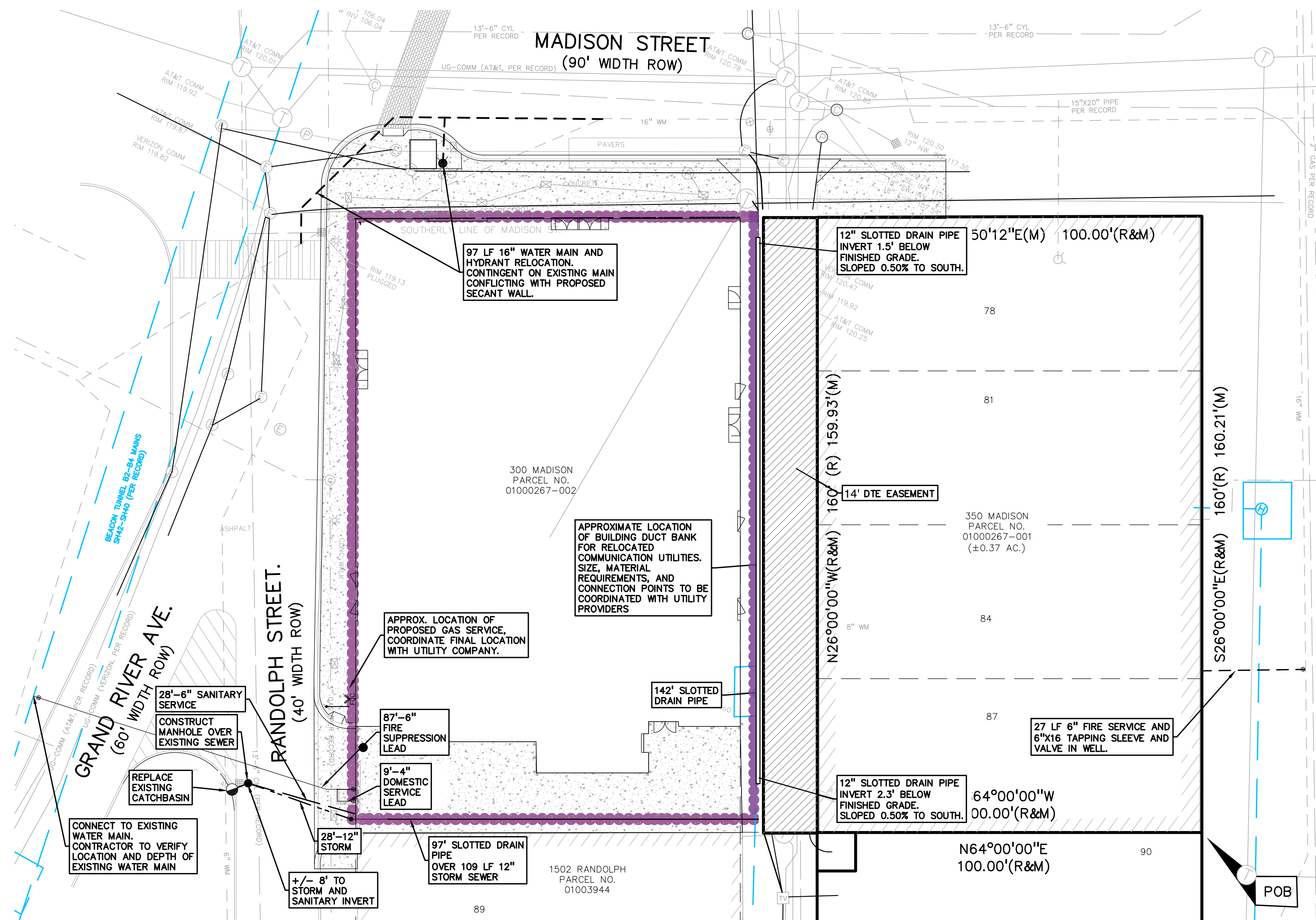
| | |
|---------------|---|
| —OH-ELEC—W—O— | EX. OH. ELEC. POLE & GUY WIRE |
| —UG-CATV— | EX. U.G. CABLE TV & PEDESTAL |
| —UG-COMM— | EX. U.G. COMMUNICATION LINE, PEDESTAL & MANHOLE |
| —UG-ELEC— | EX. U.G. ELEC. MANHOLE, METER & HANDHOLE |
| --- | EX. GAS LINE |
| ⊙ | EX. GAS VALVE & GAS LINE MARKER |
| ⊠ | EX. TRANSFORMER & IRRIGATION VALVE |
| — | EX. WATER MAIN |
| ⊕ | EX. HYDRANT, GATE VALVE & POST INDICATOR VALVE |
| ⊗ | EX. WATER VALVE BOX & SHUTOFF |
| — | EX. SANITARY SEWER |
| ⊙ | EX. SANITARY CLEANOUT & MANHOLE |
| ⊙ | EX. COMBINED SEWER MANHOLE |
| --- | EX. STORM SEWER |
| ⊙ | EX. CLEANOUT & MANHOLE |
| ⊠ | EX. SQUARE, ROUND, & BEEHIVE CATCH BASIN |
| ⊙ | EX. YARD DRAIN & ROOF DRAIN |
| ⊙ | EX. UNIDENTIFIED STRUCTURE |
| --- | PROPOSED WATER MAIN |
| ⊕ | PROPOSED HYDRANT AND GATE VALVE |
| ⊗ | PROPOSED TAPPING SLEEVE, VALVE & WELL |
| ⊕ | PROPOSED POST INDICATOR VALVE |
| --- | PROPOSED SANITARY SEWER |
| ⊙ | PROPOSED SANITARY CLEANOUT & MANHOLE |
| --- | PROPOSED STORM SEWER |
| ⊙ | PROPOSED STORM SEWER CLEANOUT & MANHOLE |
| ⊙ | PROPOSED CATCH BASIN, INLET & YARD DRAIN |

PREMIUM TRENCH BACKFILL NOTE:
ALL UTILITIES UNDER PAVEMENT OR WITHIN 3' OF THE EDGE OF PAVEMENT (OR WITHIN THE 45' LINE OF INFLUENCE OF PAVEMENT) SHALL HAVE M.D.O.T. CLASS II GRANULAR BACKFILL COMPACTED TO 95% MAX. DRY DENSITY (ASTM D-1557).

REFER TO:
UTILITY FINAL CONSTRUCTION DOCUMENTS FOR ADDITIONAL NOTES AND DETAILS ON SHEET C-9.0

NOTE:
CONTRACTOR TO VERIFY ALL QUANTITIES. ANY DEVIATIONS TO THE PLAN QUANTITIES SHALL BE BROUGHT TO THE ATTENTION OF PEA GROUP FOR VERIFICATION, PRIOR TO BIDDING.

STORMWATER NOTE:
TOTAL SITE DISTURBANCE DOES NOT EXCEED 1/2 ACRE. PER CITY OF DETROIT POST CONSTRUCTION STORMWATER ORDINANCE NO DETENTION OF SITE STORMWATER IS REQUIRED.



ARCHITECTS
TOD WILLIAMS
BILLIE TS'EN
AND ASSOCIATES

222 CENTRAL PARK SOUTH
NEW YORK CITY, NY 10019
T 212-562-2885
F 212-265-1884
E MAIL@TWB.TACOM

50% DESIGN DEVELOPMENT
MARCH 05, 2024

NOTE: ERS SECANT WALLS ARE DELEGATED DESIGN SCOPE. SHOP DRAWINGS FROM DESIGN/BUILD CONTRACTOR ARE FORTHCOMING

NOT FOR CONSTRUCTION

DETROIT MUSIC HALL EXPANSION
CENTER FOR THE PERFORMING ARTS
350 MADISON ST., DETROIT, MI 48226

SCALE: 1"=20'

DRAWN BY: PEA GROUP

PRELIMINARY UTILITY PLAN

C-6.0