

- GENERAL NOTES:**
1. ALL EXISTING UTILITIES AND SITE CONDITIONS, INCLUDING BUT NOT LIMITED TO NEIGHBORING STRUCTURES, MUST BE VERIFIED IN FIELD PRIOR TO CONSTRUCTION.
 2. ALL PROPOSED SCOPE ADJACENT TO (OR ENCRoACHING UPON) EXISTING EASEMENTS REQUIRES APPROVAL FROM RELEVANT GOVERNING BODIES.
 3. SECTANT WALL DESIGN SCOPE IS FOR REFERENCE ONLY AND MUST BE DIMENSIONALLY CONFIRMED AND FURTHER DEVELOPED BY ERS SUBCONTRACTOR.
 4. ZONING CLASSIFICATION IS A B4 GENERAL BUSINESS DISTRICT AND PARKING IS NOT REQUIRED UNDER THIS ORDINANCE.
 5. PROJECT DOES NOT EXCEED 1/2 ACRE AND STORMWATER DETENTION IS NOT REQUIRED PER THE POST CONSTRUCTION STORMWATER ORDINANCE.
 6. STORMWATER CONNECTIONS TO THE SURROUNDING SYSTEM HAVE BEEN INDICATED ON THE CIVIL DRAWINGS.
 7. PROJECT IS BEING DESIGNED TO MEET A LEED GOLD EQUIVALENCY. REFER TO APPENDIX VII - SUSTAINABILITY SUMMARY.

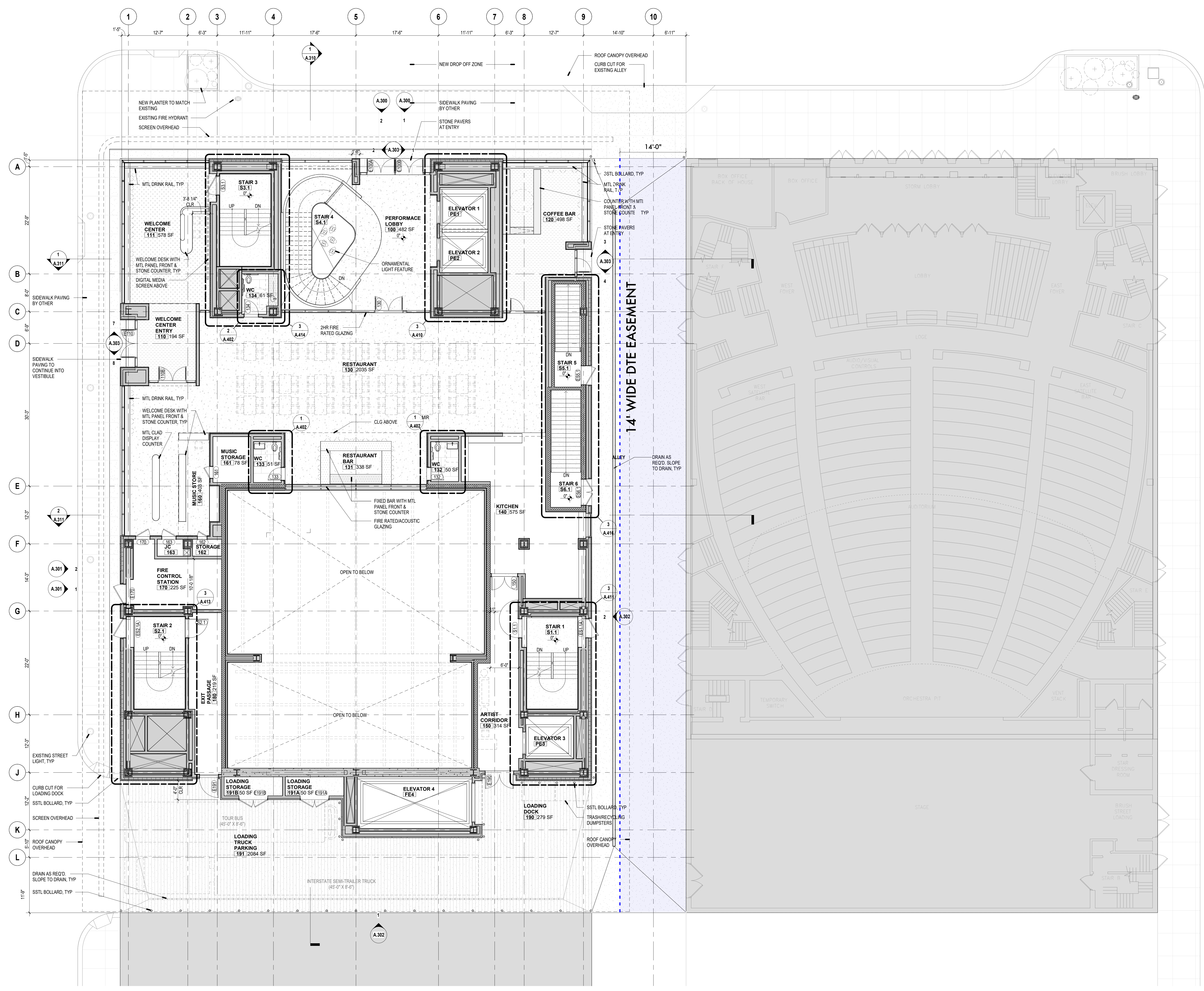
MATERIAL DESIGNATIONS:

PLAN

[Symbol]	EARTH
[Symbol]	PAVER
[Symbol]	METAL
[Symbol]	STANDING BEAM ROOF
[Symbol]	STONE COUNTER
[Symbol]	STONE FLOORING
[Symbol]	CONCRETE
[Symbol]	SCORED CONCRETE
[Symbol]	WOOD
[Symbol]	TERRAZZO
[Symbol]	TILE
[Symbol]	WOOD
[Symbol]	CARPET
[Symbol]	WALK-OFF MAT
[Symbol]	UNOLEUM
[Symbol]	STEEL GRATE

222 CENTRAL PARK SOUTH
NEW YORK, NY 10019
T 212.682.2388
E info@williams-architects.com

TOD WILLIAMS
BILLIE TSJEN
ARCHITECTS, LLP



50% DESIGN DEVELOPMENT
MARCH 05, 2024
REVISIONS

NOT FOR CONSTRUCTION

DETROIT MUSIC HALL EXPANSION
CENTER FOR THE PERFORMING ARTS
350 MADISON ST. DETROIT, MI 48226

DWN BY: TWBTA
SCALE: As indicated

LVL 1 FLOOR PLAN

A.101

1 L1 STREET PLAN
SCALE: 1/8" = 1'-0"