

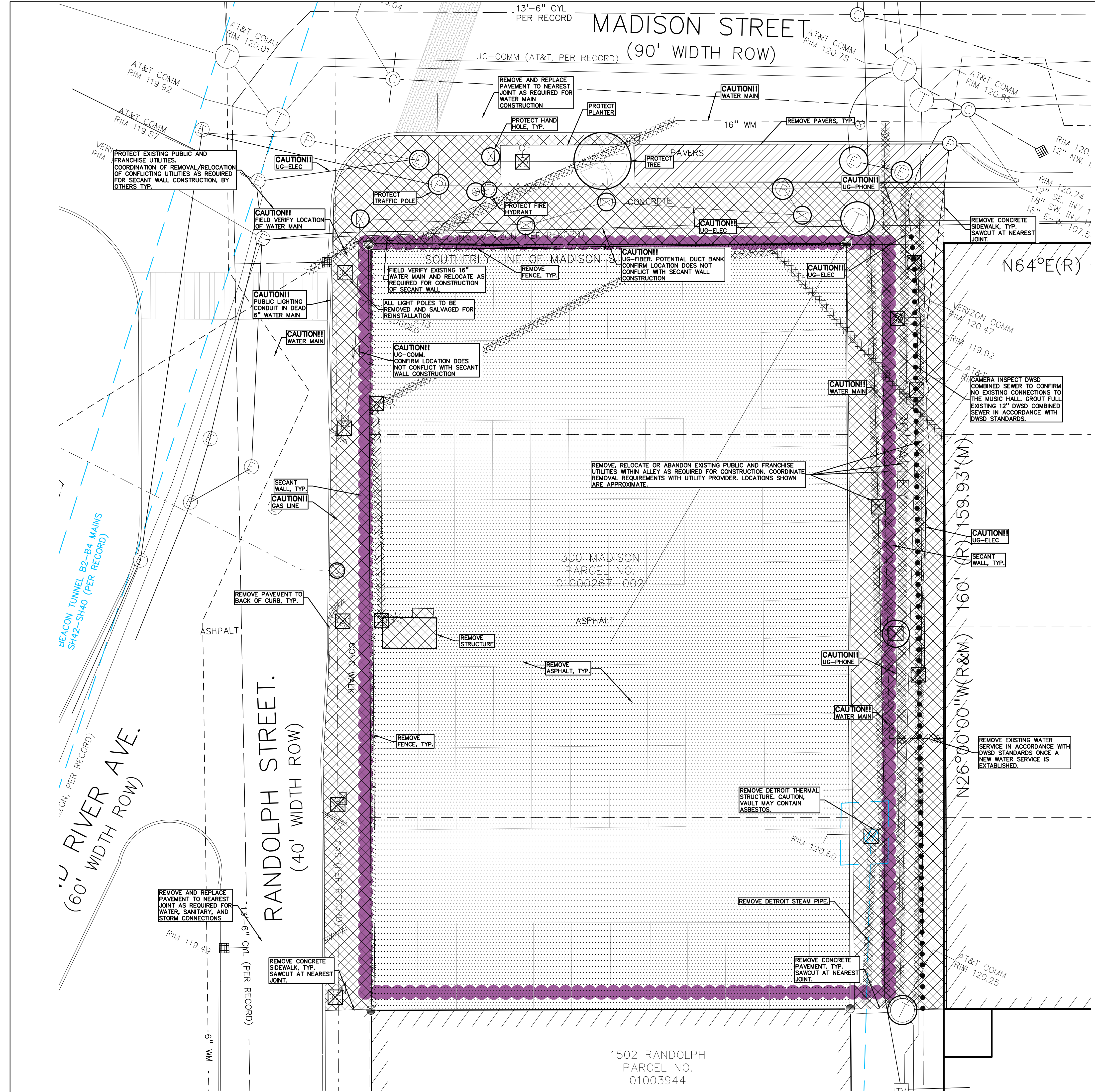
MADISON STREET (90' WIDTH ROW)

DEMOLITION LEGEND:

ITEM TO BE PROTECTED	
ITEM TO BE REMOVED	
CURB/FENCE REMOVAL	
CONCRETE PAVEMENT AND SIDEWALK REMOVAL	
AREA OR ITEMS TO BE REMOVED	
GROUT FULL/ABANDON UTILITY	
UTILITY REMOVAL	
ASPHALT REMOVAL	
TREE REMOVAL	
SAWCUT LINE	

- GENERAL DEMOLITION NOTES:**
- THESE NOTES APPLY TO ALL CONSTRUCTION ACTIVITIES ON THIS PROJECT:
- ALL MATERIAL TO BE REMOVED, WHETHER SPECIFICALLY NOTED IN THE PLANS OR NOT, SHALL BE REMOVED FROM THE SITE BY THE CONTRACTOR AND DISPOSED OF OFF-SITE IN A LEGAL MANNER. NO ON-SITE BURY OR BURN PITS SHALL BE ALLOWED.
 - ALL DEMOLITION WORK SHALL CONFORM TO ALL LOCAL CODES AND ORDINANCES.
 - STAGING/PHASING OF DEMOLITION AND CONSTRUCTION IS TO BE COORDINATED WITH THE OWNER AND THE CONTRACTOR PRIOR TO CONSTRUCTION.
 - SPECIFIC DEMOLITION ITEMS HAVE BEEN INDICATED ON THE PLANS AS A GUIDE TO THE GENERAL SCOPE OF THE WORK. IT IS THE INTENT THAT THESE ITEMS SHALL BE COMPLETELY REMOVED BY THE CONTRACTOR ABOVE AND BELOW GROUND, UNLESS SPECIFICALLY NOTED OTHERWISE, AND THAT DEMOLITION WILL INCLUDE BUT WILL NOT NECESSARILY BE LIMITED TO THESE ITEMS. CONTRACTOR SHALL VISIT SITE TO VERIFY EXISTING CONDITIONS AND EXTENTS OF THE DEMOLITION THAT WILL BE REQUIRED PRIOR TO SUBMITTING A BID.
 - REMOVE ALL STRUCTURES DESIGNATED FOR REMOVAL ACCORDING TO THE DEMOLITION PLAN. THIS INCLUDES FOUNDATIONS, FOOTINGS, FOUNDATION WALLS, FLOOR SLABS, UNDERGROUND UTILITIES, CONCRETE, ASPHALT, TREES, ETC.
 - REFER TO DETAIL ON THIS SHEET FOR TREE PROTECTION DETAILS.
 - THE CONTRACTOR SHALL, AS A MINIMUM, PROVIDE TREE PROTECTION FENCING AROUND EXISTING TREES TO BE SAVED THAT ARE WITHIN 15 FEET OF CONSTRUCTION ACTIVITIES AND AS INDICATED IN THE PLANS OR PER LOCAL AGENCY REQUIREMENTS.
 - THE CONTRACTOR SHALL BE RESPONSIBLE FOR CLEAN UP, NOISE, DUST CONTROL, STREET SWEEPING AND HOURS OF OPERATION IN ACCORDANCE WITH THE LOCAL CODES.
 - THE CONTRACTOR SHALL PROVIDE ALL NECESSARY BARRICADES, SIGNAGE, MARKINGS, LIGHTS AND OTHER TRAFFIC CONTROL DEVICES TO PROTECT THE WORK ZONE AND SAFELY MAINTAIN TRAFFIC PER AGENCY REQUIREMENTS AND IN ACCORDANCE WITH THE LATEST EDITION OF THE STATE MANUAL OF UNIFORM TRAFFIC CONTROL DEVICES.
 - THE CONTRACTOR SHALL CONTACT THE APPROPRIATE UTILITY COMPANIES TO CONFIRM THAT UTILITY LEADS HAVE BEEN TAKEN OUT OF SERVICE PRIOR TO DEMOLITION.
 - ALL BUILDING GAS LEADS, METERS AND ASSOCIATED EQUIPMENT SHALL BE REMOVED AS SHOWN ON THE PLANS. COORDINATE ALL ASSOCIATED WORK WITH THE APPROPRIATE UTILITY COMPANY.
 - REMOVE ALL OVERHEAD AND UNDERGROUND ELECTRICAL LINES WITHIN THE AREA OF CONSTRUCTION AS SHOWN ON THE PLANS. COORDINATE SHUTDOWNS AND REMOVALS WITH ELECTRICAL SERVICE PROVIDER OR THE APPROPRIATE UTILITY COMPANY. (NOTE: PHONE AND CABLE T.V. SERVICES MAY ALSO BE LOCATED ON OVERHEAD LINES.)
 - THE CONTRACTOR IS RESPONSIBLE FOR THE REMOVAL AND REPLACEMENT OF SIGNS AND SUPPORTS WITHIN THE WORK AREA, AS NECESSARY TO FACILITATE CONSTRUCTION. SIGNS SHALL BE PROTECTED OR STOCKPILED FOR REUSE AS SPECIFIED IN THE PLANS OR AS REQUIRED BY THE AGENCY OF JURISDICTION. THE CONTRACTOR SHALL REPLACE ANY DAMAGED SIGNS AND SUPPORTS AT NO ADDITIONAL COST TO THE OWNER.
 - THE CONTRACTOR SHALL NOTIFY THE APPROPRIATE 811/ONE CALL UTILITY LOCATING CENTER, THE CITY ENGINEER AND/OR THE AUTHORITY HAVING JURISDICTION 3 BUSINESS DAYS PRIOR TO THE BEGINNING OF CONSTRUCTION.

- ALLEY UTILITY NOTES:**
- REMOVE, RELOCATE OR ABANDON EXISTING PUBLIC AND FRANCHISE UTILITIES WITHIN ALLEY AS REQUIRED FOR CONSTRUCTION. COORDINATE REMOVAL REQUIREMENTS WITH UTILITY PROVIDER. LOCATIONS SHOWN ARE APPROXIMATE.
- UTILITY RECORDS RECEIVED INDICATE THE FOLLOWING UTILITIES ARE PRESENT IN THE ALLEY:
- MUSIC HALL WATER SERVICE, TO BE REMOVED
 - 12" DWS COMBINED SEWER, TO BE ABANDONED
 - ABANDONED DWS 15"x20" SEWER
 - COMCAST UNDERGROUND FIBER, RELOCATE TO BUILDING
 - AT&T UNDERGROUND CONDUIT, RELOCATE TO BUILDING
 - DTE VAULTS AND DUCT BANK(S), RECONSTRUCTED IN 10' EASEMENT
 - DETROIT THERMAL ABANDONED 4" STEAM AND VAULT, REMOVE
 - EVERGREEN, RELOCATE TO BUILDING
- UTILITY RECORDS WERE NOT RECEIVED FROM THE FOLLOWING UTILITIES:
- EXTENT INC.
 - T-MOBILE FIBER
 - 123.NET, INC. FIBER OPTICS
 - DETROIT PUBLIC LIGHTING
 - EVERSTREAM FIBER OPTICS
 - NEXTEL COMMUNICATIONS
 - DETROIT EMS
- BELOW UTILITY RESPONSES RECEIVED INDICATE THE FOLLOWING UTILITIES ARE NOT IN THE ALLEY:
- VERIZON
 - DTE GAS
 - DWS PUBLIC WATER MAIN



ARCHITECTS
TOD WILLIAMS
BILLIE T SIEN
AND ASSOCIATES

UTILITY BID PACKAGE #01
FEBRUARY 14, 2023
FOR BID

NOTE: ERS SECANT WALLS ARE DELEGATED DESIGN SCOPE. SHOP DRAWINGS FROM DESIGN/BUILD CONTRACTOR ARE FORTHCOMING

NOT FOR CONSTRUCTION

DETROIT MUSIC HALL EXPANSION CENTER FOR THE PERFORMING ARTS
350 MADISON ST, DETROIT, MI 48226

SCALE: 1"=10'
DRAWN BY: PEA GROUP

DEMOLITION PLAN

C-2.0