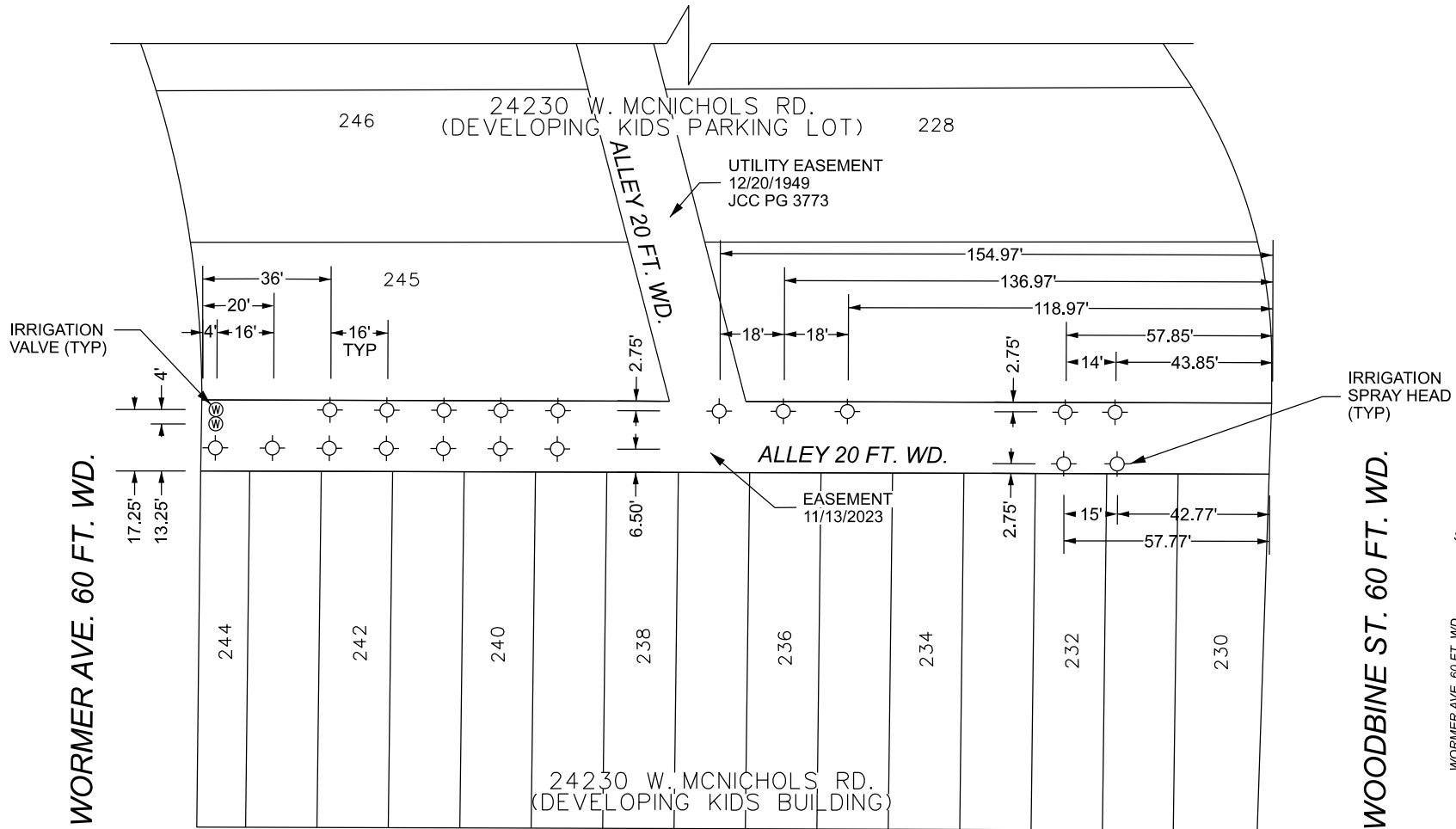
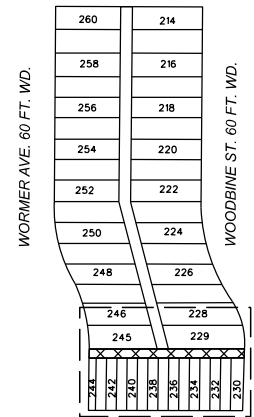


SANTA MARIA AVE. 60 FT. WD.



SANTA MARIA AVE. 60 FT. WD.



W. MCNICHOLS RD. 66 FT. WD.

⊙ - REQUEST ENCROACHMENT  
(2 SPRINKLER VALVES, AT GRADE)

⊙ - REQUEST ENCROACHMENT  
(19 SPRINKLER HEADS, AT GRADE)

W. MCNICHOLS RD. 66 FT. WD.

(FOR OFFICE USE ONLY)

CARTO 122 D

B					
A					
DESCRIPTION	DRWN	CHKD	APPD	DATE	
REVISIONS					
DRAWN BY	TS	CHECKED		AP	
DATE	10-22-2024	APPROVED		RW	

REQUEST ENCROACHMENTS INTO  
THE EAST-WEST PUBLIC ALLEY BOUNDED  
BY W. MCNICHOLS RD., WOODBINE ST.,  
SANTA MARIA AVE., AND WORMER AVE.  
AT 24230 W MCNICHOLS RD.

CITY OF DETROIT  
CITY ENGINEERING DIVISION  
SURVEY BUREAU

JOB NO. 24-154

DRWG. NO. 03