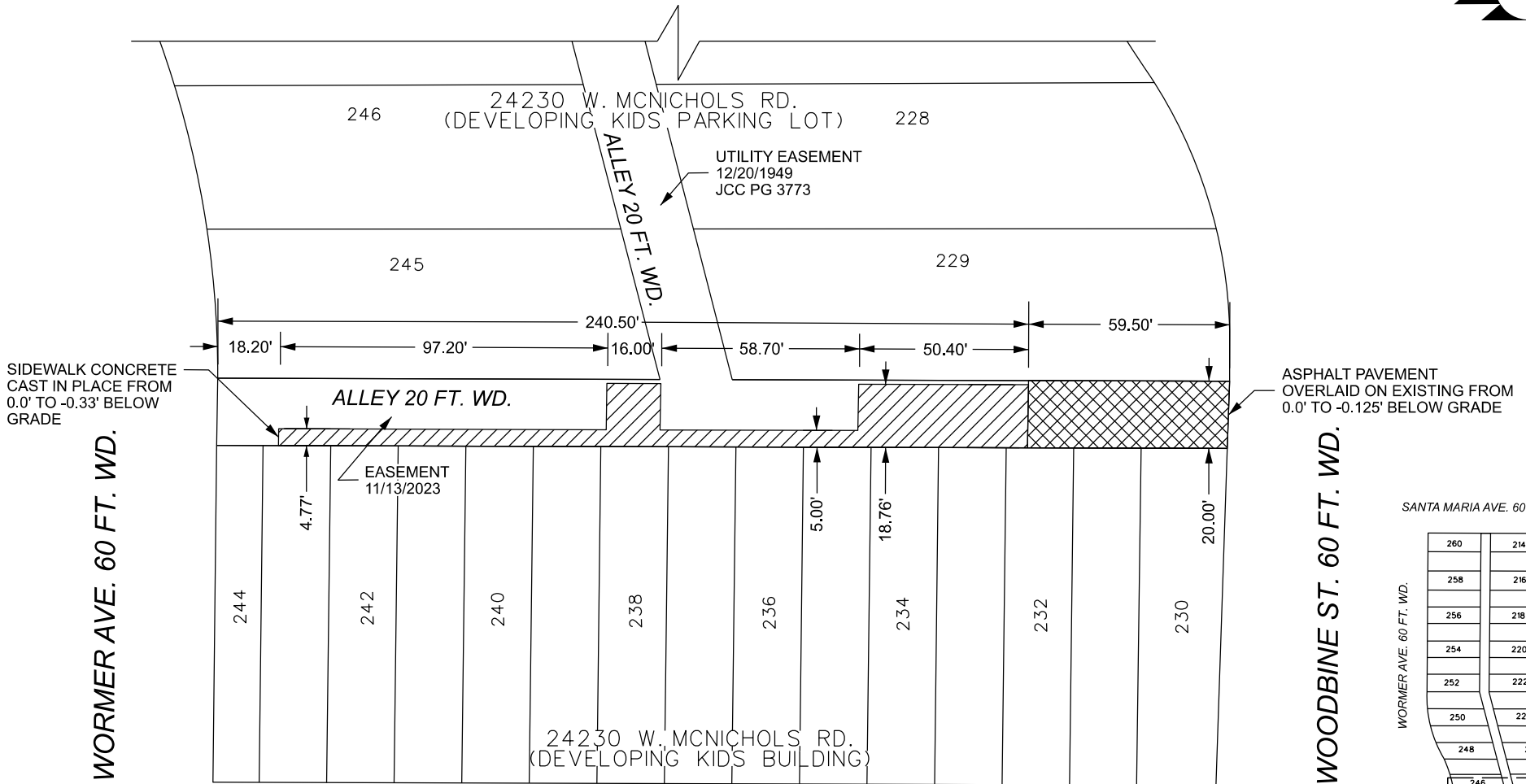


SANTA MARIA AVE. 60 FT. WD.



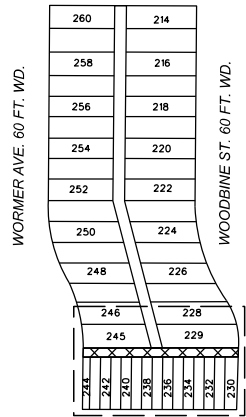
SIDEWALK CONCRETE CAST IN PLACE FROM 0.0' TO -0.33' BELOW GRADE

ASPHALT PAVEMENT OVERLAID ON EXISTING FROM 0.0' TO -0.125' BELOW GRADE

WORMER AVE. 60 FT. WD.

WOODBINE ST. 60 FT. WD.

SANTA MARIA AVE. 60 FT. WD.



W. MCNICHOLS RD. 66 FT. WD.

 - REQUEST ENCROACHMENT (FOR CONCRETE SIDEWALK, 0' TO 0.33' BELOW GRADE)

 - REQUEST ENCROACHMENT (FOR ASPHALT PAVEMENT, 0' TO 0.125' BELOW GRADE)

W. MCNICHOLS RD. 66 FT. WD.

(FOR OFFICE USE ONLY)

CARTO 122 D

B					
A					
DESCRIPTION	DRWN	CHKD	APPD	DATE	
REVISIONS					
DRAWN BY	TS	CHECKED		AP	
DATE	10-22-2024	APPROVED		RW	

REQUEST ENCROACHMENTS INTO THE EAST-WEST PUBLIC ALLEY BOUNDED BY W. MCNICHOLS RD., WOODBINE ST., SANTA MARIA AVE., AND WORMER AVE. AT 24230 W MCNICHOLS RD.

CITY OF DETROIT  
CITY ENGINEERING DIVISION  
SURVEY BUREAU  
JOB NO. 24-154  
DRWG. NO. 02