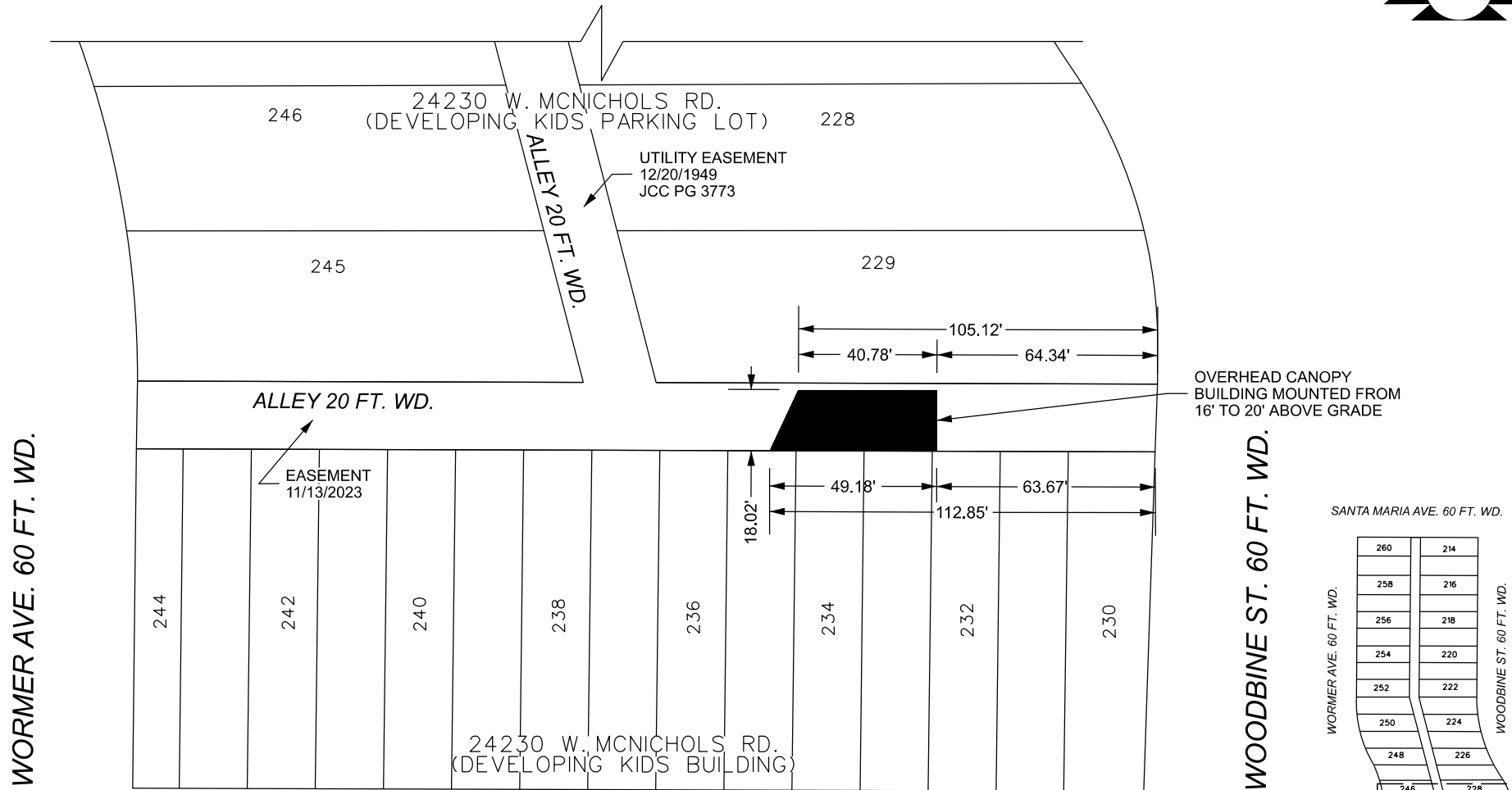
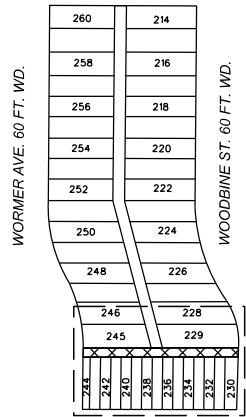


SANTA MARIA AVE. 60 FT. WD.



OVERHEAD CANOPY BUILDING MOUNTED FROM 16' TO 20' ABOVE GRADE

SANTA MARIA AVE. 60 FT. WD.



W. MCNICHOLS RD. 66 FT. WD.

W. MCNICHOLS RD. 66 FT. WD.

 - REQUEST ENCROACHMENT (FOR NEW CANOPY, 16' TO 20' ABOVE GRADE)

(FOR OFFICE USE ONLY)

CARTO 122 D

B					
A					
DESCRIPTION	DRWN	CHKD	APPD	DATE	
REVISIONS					
DRAWN BY	TS	CHECKED	AP		
DATE	10-22-2024	APPROVED	RW		

REQUEST ENCROACHMENTS INTO THE EAST-WEST PUBLIC ALLEY BOUNDED BY W. MCNICHOLS RD., WOODBINE ST., SANTA MARIA AVE., AND WORMER AVE. AT 24230 W MCNICHOLS RD.

CITY OF DETROIT CITY ENGINEERING DIVISION SURVEY BUREAU	
JOB NO.	24-154
DRWG. NO.	01