

City of Detroit

Janice M. Winfrey
City Clerk

OFFICE OF THE CITY CLERK

Andre P. Gilbert II
Deputy City Clerk

DEPARTMENT PETITION REFERENCE COMMUNICATION

To: The Department or Commission Listed Below

From: Janice M Winfrey, Detroit City Clerk

The following petition is herewith referred to you for report and recommendation to the City Council.

In accordance with that body's directive, kindly return the same with your report in duplicate within four (4) weeks.

Petition No.	2024-379
Name of Petitioner	Henry Ford Health System
Description of Petition	Please see petition to request encroachment southerly right-of-way of Milwaukee Ave., between Lincoln and John C. Lodge for footing and shoring.
Type of Petition	Alley Vacation/ Encroachment/ Utility Vacation
Submission Date	11/14/2024
Concerned Departments	Department of Public Works, Planning and Development Department, City Engineering Division
Petitioner Contact	Henry Ford Health System 1 Ford Place STE 4AB Detroit, MI 48202



**CITY OF DETROIT
DEPARTMENT OF PUBLIC WORKS
CITY ENGINEERING DIVISION**

**COLEMAN A. YOUNG MUNICIPAL CENTER
2 WOODWARD AVE. SUITE 601
DETROIT, MICHIGAN 48226
PHONE: (313) 224-3949 TTY: 711
WWW.DETROITMI.GOV**

To: Clerk's Office
From: The Department of Public Works
City Engineering Division
MapsandRecordsBureau@DetroitMI.Gov
(313) 224-3970

Petitioner:
Henry Ford Health System
1 Ford Place Ste 4AB
Detroit, MI 48202

On behalf of the above-mentioned petitioner the Department of Public Works: City Engineering Division is submitting a petition request for the below mentioned action. The petitioner has received a project consultation from the Department of Public Works: City Engineering Division and has been advised the following:

Type of action recommended:

Petition to request encroachment southerly right-of-way of Milwaukee Ave., between Lincoln and John C. Lodge for footing and shoring.

Georgine Gersdorff
Manager II
Department of Public Works
City Engineering Division
313-224-3985



CITY OF DETROIT
DEPARTMENT OF PUBLIC WORKS
CITY ENGINEERING DIVISION

COLEMAN A. YOUNG MUNICIPAL CENTER
2 WOODWARD AVE. SUITE 601
DETROIT, MICHIGAN 48226
PHONE: (313) 224-3949 TTY: 711
WWW.DETROITMI.GOV



August 05, 2024

Honorable Detroit City Council
C/o Detroit City Clerk
2 Woodward Avenue
200 Coleman A. Young Municipal Center
Detroit, Michigan 48226

RE: Giffels Webster - Request several modifications to the Lincoln Street, W. Milwaukee Street, Trumbull Street, and associated alley rights-of-way within the block generally bounded by West Grand Boulevard, John C. Lodge Service Drive, Holden Street, and Sterling Avenue.

Giffels Webster, 28 W. Adams, Suite 1200, Detroit, Michigan 48226 on behalf of Henry Ford Health, One Ford Place, Detroit, MI, 48202 respectfully requests the following modifications to the right-of-way within the block generally bounded by West Grand Boulevard, John C. Lodge Service Drive, Holden Street, and Sterling Avenue:

- o Refer to exhibit F for the below encroachment for the Shared Service Building footings which begins 149.2 feet west of the southern property line at the corner of the John C Lodge Service Drive and Milwaukee Avenue and extends 276.1 feet to the west. The encroachment begins 0 feet off the south Milwaukee Avenue property line and extends 5.0 feet to the north side. The encroachment begins 5.5' below grade and extends to the ground surface.

Refer to the attached detailed exhibits, enclosed herein, for further clarification of the proposed right-of-way modifications.

Giffels Webster has been asked to facilitate the requested right-of-way modifications. We will be working with the City of Detroit's Department of Public Works – Civil Engineering Division, and all stakeholders to achieve vacations and easements that are satisfactory to all interested parties.

The requested right-of-way modifications will neither impede pedestrian and vehicular traffic, nor will it interfere with the maintenance of public rights-of-way, including utility company and Fire and Police Department access.

If you should have any questions, please do not hesitate to contact Michael Marks by phone, at 313.980.1469, or by email, at mmarks@giffelswebster.com.

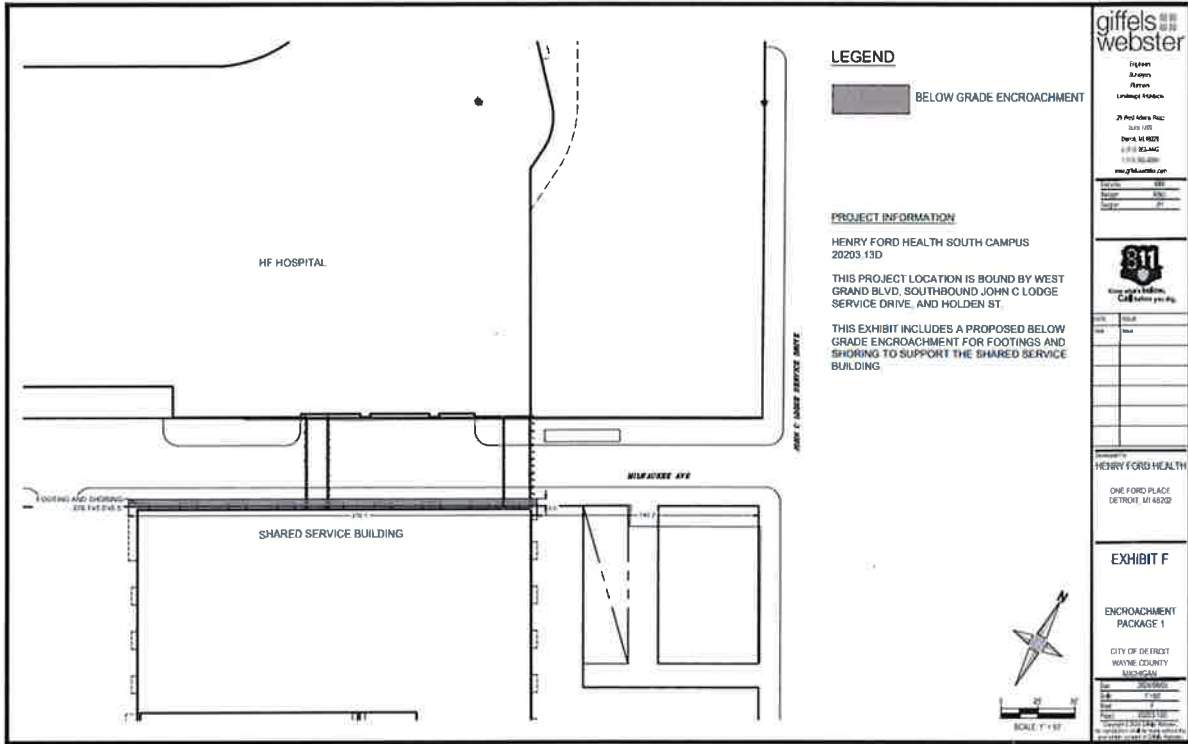
Respectfully,

Michael Marks P.E.,
Partner
Giffels Webster



CITY OF DETROIT
DEPARTMENT OF PUBLIC WORKS
CITY ENGINEERING DIVISION

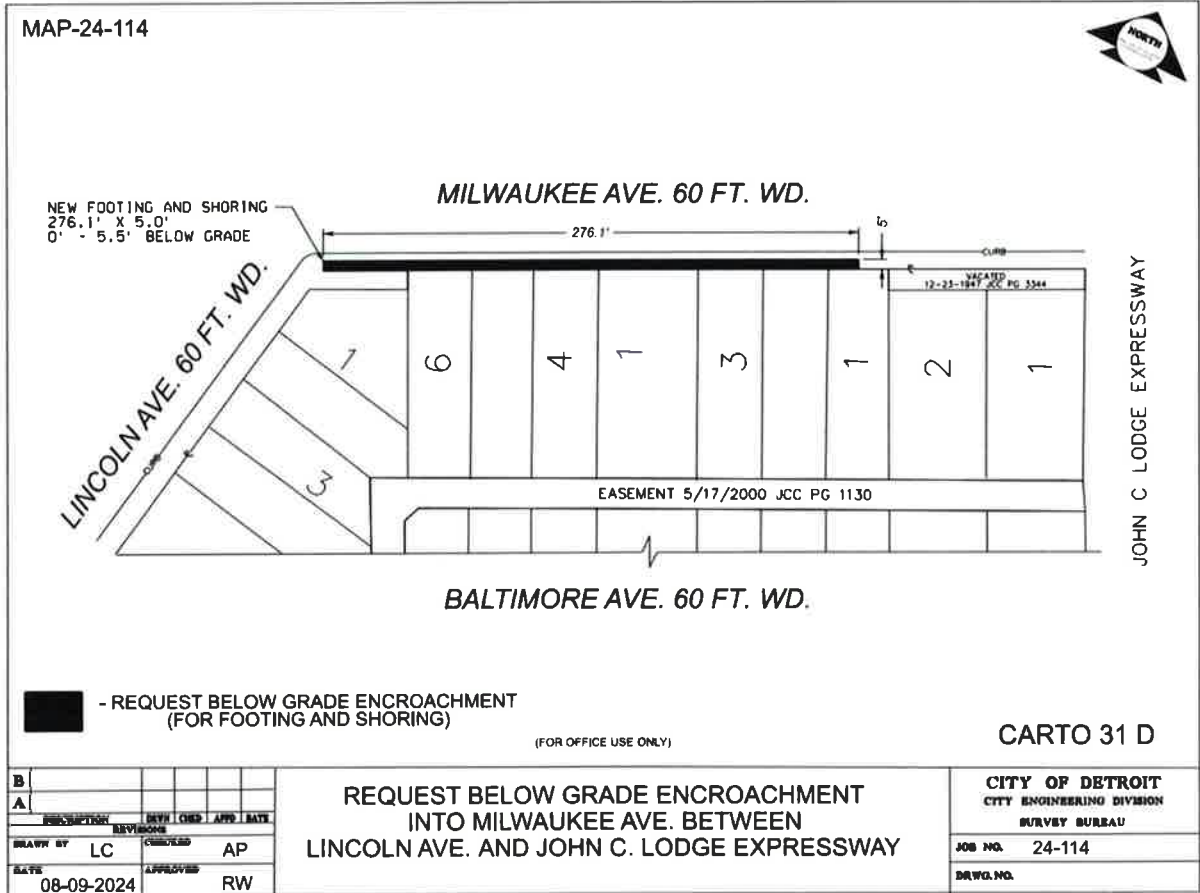
COLEMAN A. YOUNG MUNICIPAL CENTER
2 WOODWARD AVE. SUITE 601
DETROIT, MICHIGAN 48226
PHONE: (313) 224-3949 TTY: 711
WWW.DETROITMI.GOV





CITY OF DETROIT
DEPARTMENT OF PUBLIC WORKS
CITY ENGINEERING DIVISION

COLEMAN A. YOUNG MUNICIPAL CENTER
2 WOODWARD AVE. SUITE 601
DETROIT, MICHIGAN 48226
PHONE: (313) 224-3949 TTY: 711
WWW.DETROITMI.GOV





**CITY OF DETROIT
DEPARTMENT OF PUBLIC WORKS
CITY ENGINEERING DIVISION**

**COLEMAN A. YOUNG MUNICIPAL CENTER
2 WOODWARD AVE. SUITE 601
DETROIT, MICHIGAN 48226
PHONE: (313) 224-3949 TTY: 711
WWW.DETROITMI.GOV**
