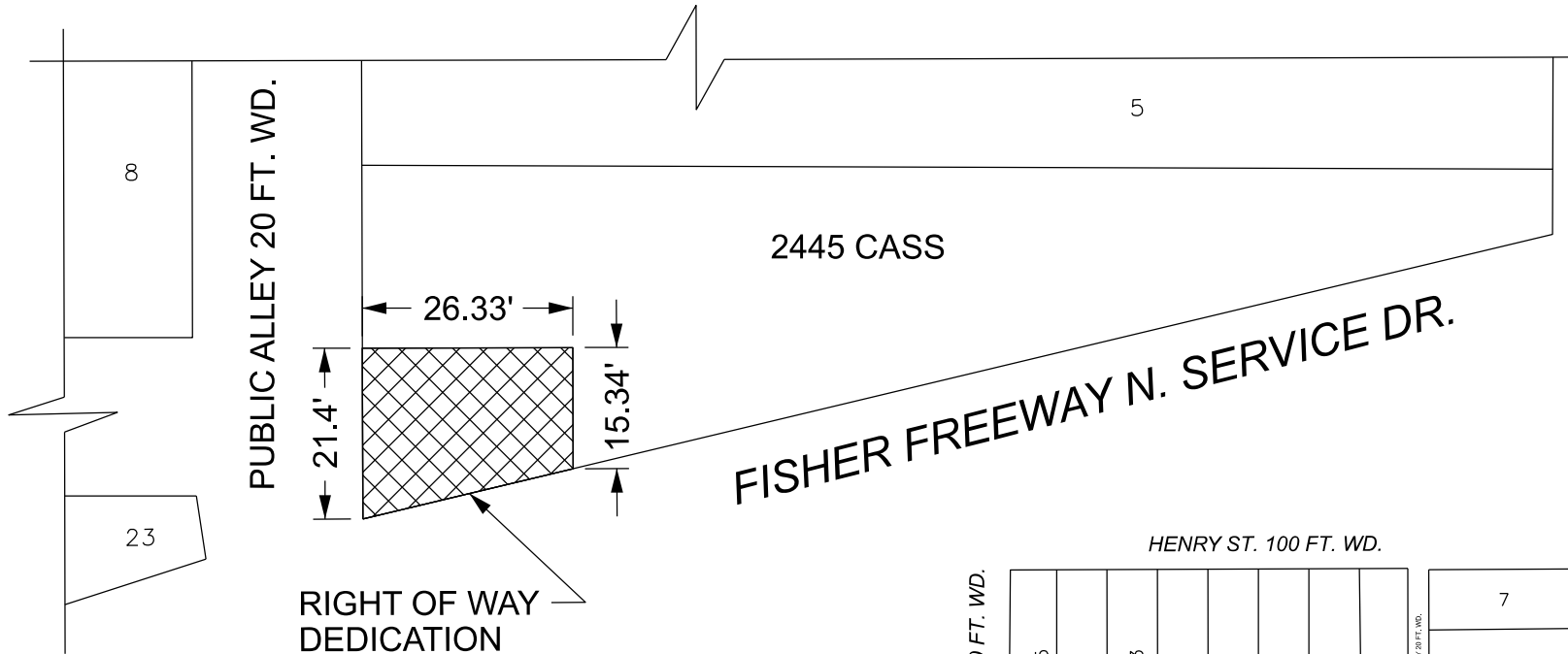




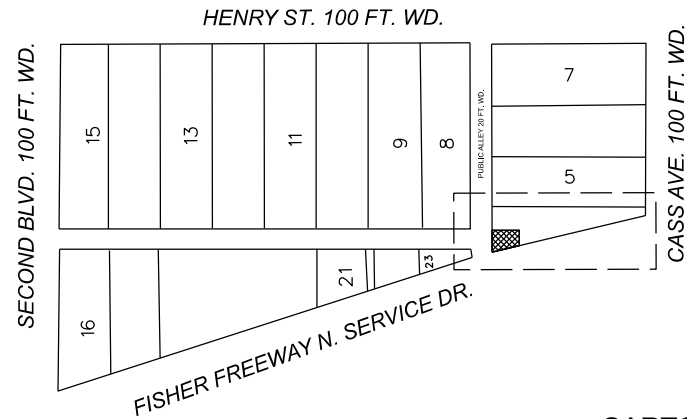
SECOND BLVD. 100 FT. WD.

HENRY ST. 100 FT. WD.

CASS AVE. 100 FT. WD.



RIGHT OF WAY DEDICATION



- REQUEST DEDICATION

(FOR OFFICE USE ONLY)

CARTO 29 E

REQUEST DEDICATION OF A 483 SQ. FT. SECTION IN THE
SOUTHWEST CORNER OF LOT 4 BOUNDED BY CASS AVE.,
FISHER FWY., SECOND BLVD., AND HENRY ST.
AT 2445 CASS AVE.

CITY OF DETROIT
CITY ENGINEERING DIVISION
SURVEY BUREAU

JOB NO. 24-130

DRWG. NO.

B					
A					
DESCRIPTION	DRWN	CHKD	APPD	DATE	
REVISIONS					
DRAWN BY	LC	CHECKED	AP		
DATE	08-22-2024	APPROVED	RW		