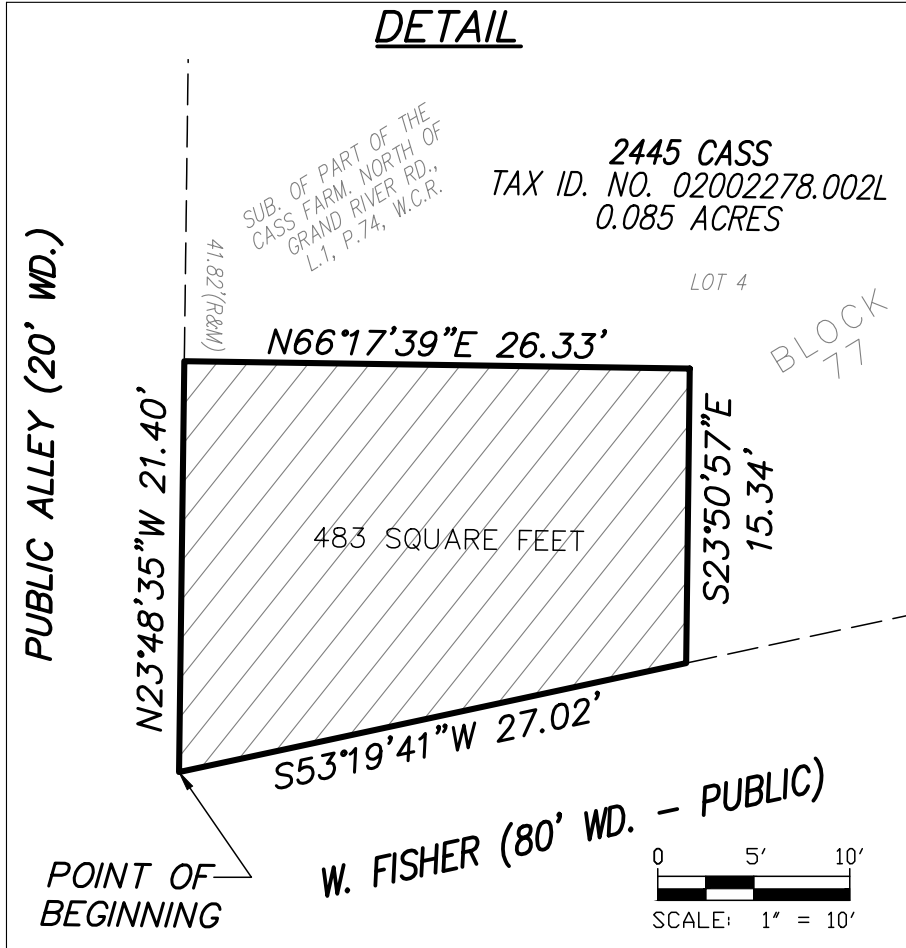
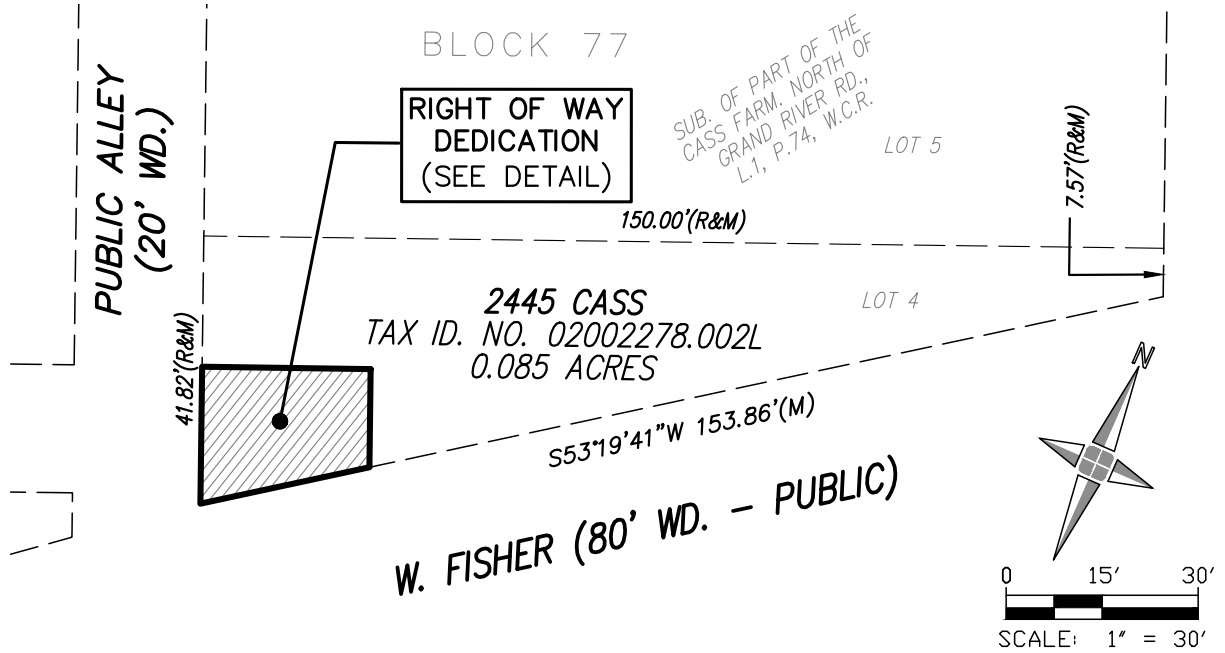


DEDICATION DESCRIPTION

(PART OF TAX ID. NO. 02002278.002L)

BEING PART OF LOT 4, OF BLOCK 77, OF THE SUBDIVISION OF PART OF THE CASS FARM, AS RECORDED IN LIBER 1, PAGE 74 OF PLATS, WAYNE COUNTY RECORDS, BEING MORE PARTICULARLY DESCRIBED AS:

BEGINNING AT THE SOUTHWEST CORNER OF SAID LOT 4, THENCE NORTH 23°48'35" WEST, 21.40 FEET; THENCE NORTH 66°17'39" EAST, 26.33 FEET; THENCE SOUTH 23°50'57" EAST, 15.34 FEET; THENCE SOUTH 53°19'41" WEST, 27.02 FEET TO THE POINT OF BEGINNING AND CONTAINING 483 SQUARE FEET.



N:\18182000\18275-147d - Cass Village Apartments\Drawings\Boundary\Certificate-PA132\Parcel Reconfiguration-PA132 - Cass Village Apartments - 18275.147D.dwg

CASS VILLAGE APARTMENTS

CITY OF DETROIT, WAYNE COUNTY, MICHIGAN

RIGHT OF WAY DEDICATION



28 West Adams Road
Suite 1200
Detroit, MI 48226
p (313) 962-4442
f (313) 962-5068
www.giffelswebster.com

Executive: C.A.A.
Manager: C.A.A.
Designer: A.L.G.
Quality Control: C.A.A.
Part of: CASS FARM
SUBDIVISION

Developed For:

| DATE: | ISSUE: |
|-------|--------|
| Date | Issue |
| | |
| | |
| | |

Date: 06.12.2024
Scale: 1"=30' & 1"=10'
Sheet: 1 OF 1
Project: 18275.147D

Copyright © 2024 Giffels Webster.
No reproduction shall be made
without the prior written consent of
Giffels Webster.