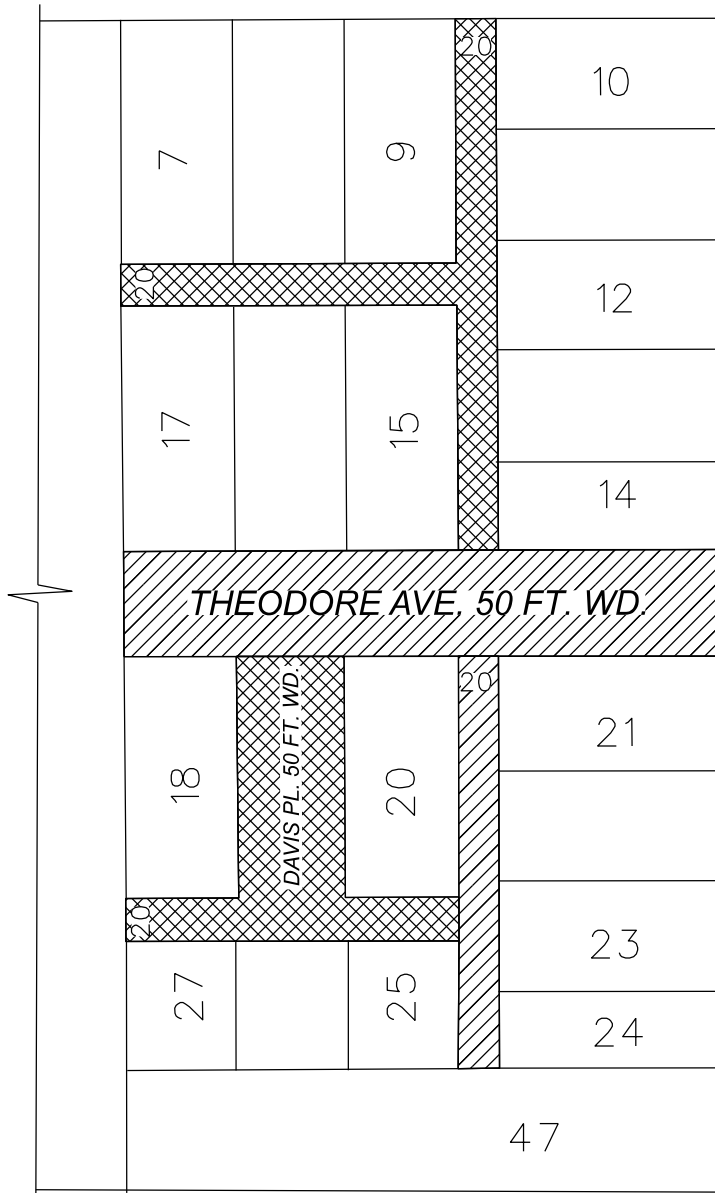




FARNSWORTH AVE. 60 FT. WD.

GRAND TRUNK R.R.

(DEQUINDRE ST. 90 FT. WD.)



ST. AUBIN AVE. 50 FT. WD.

WARREN AVE. 60 FT. WD.



- REQUEST VACATION WITH EASEMENT



- REQUEST OUTRIGHT VACATION

(FOR OFFICE USE ONLY)

CARTO 40 B

B					
A					
DESCRIPTION	DRWN	CHKD	APPD	DATE	
REVISIONS					
DRAWN BY	LC	CHECKED	AP		
DATE	09-17-2024	APPROVED	RW		

VACATION WITH EASEMENT OF THEODORE AVE. AND PART OF THE ADJACENT NORTH/SOUTH ALLEY; OUTRIGHT VACATION OF DAVIS PL. AND ADJACENT PUBLIC ALLEYS IN THE AREA BOUNDED BY E. WARREN AVE., ST. AUBIN AVE., DEQUINDRE AVE., AND FARNSWORTH ST.

CITY OF DETROIT CITY ENGINEERING DIVISION SURVEY BUREAU	
JOB NO.	23-127
DRWG. NO.	