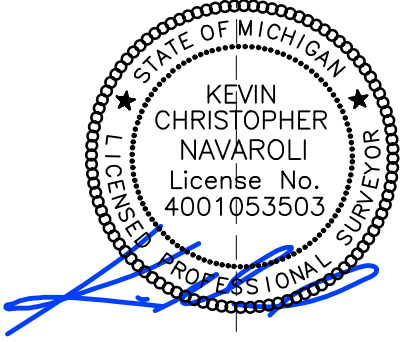
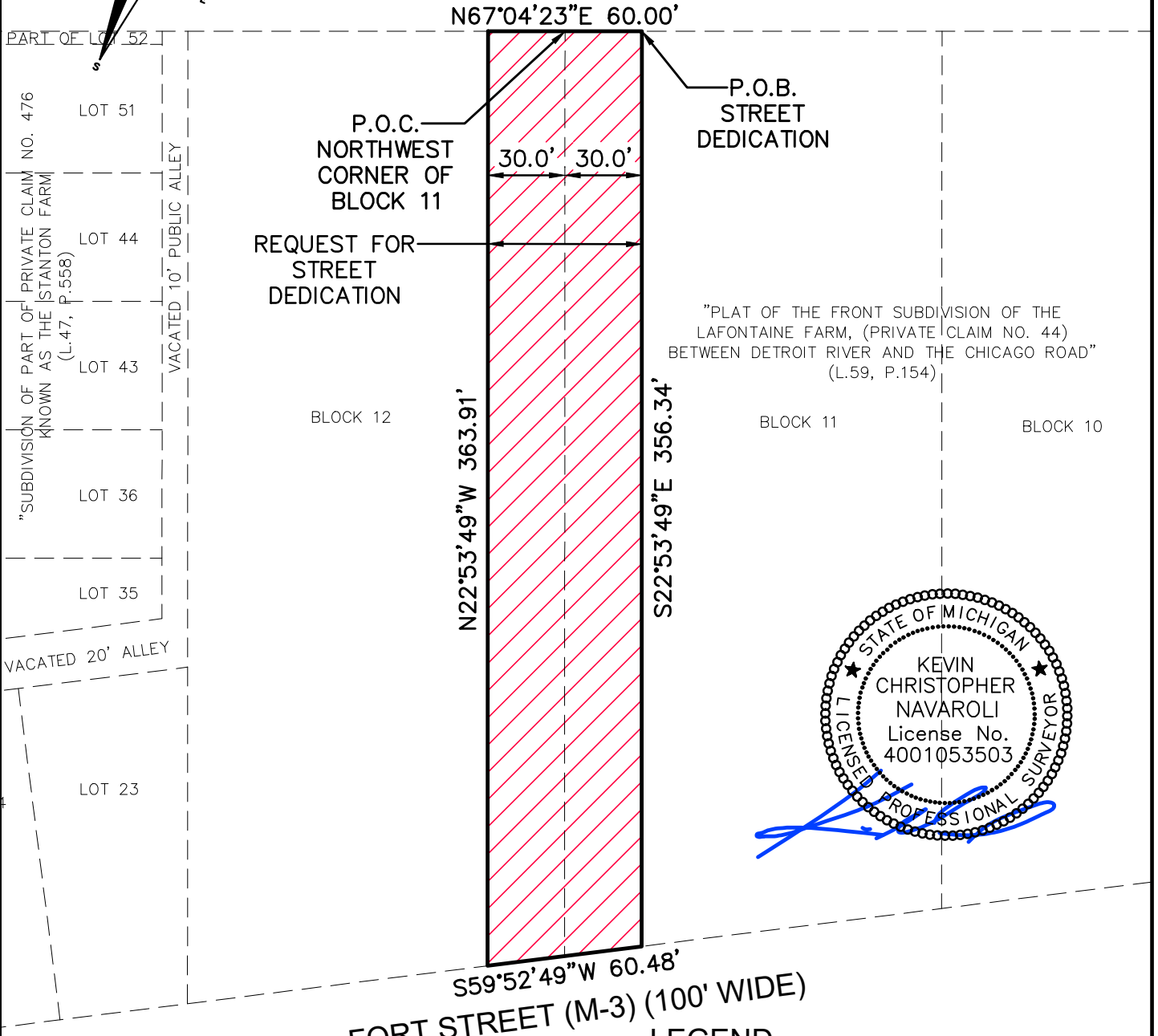


# Exhibit A

## 16TH STREET DEDICATION

### LAFAYETTE BOULEVARD (70' WIDE)



#### LEGEND

 = REQUEST FOR STREET DEDICATION

#### LEGAL DESCRIPTION (16TH STREET DEDICATION)

THE EAST 30 FEET OF BLOCK 12 AND THE WEST 30 FEET OF BLOCK 12 LYING BETWEEN THE SOUTH LINE OF LAFAYETTE BOULEVARD (70 FEET WIDE) AND THE NORTHERLY LINE OF FORT STREET (100 FEET WIDE) OF "PLAT OF THE FRONT SUBDIVISION OF THE LAFONTAINE FARM, (PRIVATE CLAIM NO. 44) BETWEEN THE DETROIT RIVER AND CHICAGO ROAD", CITY OF DETROIT, WAYNE COUNTY, MICHIGAN, AS RECORDED IN LIBER 59 OF DEEDS, ON PAGE 154, WAYNE COUNTY RECORDS BEING MORE PARTICULARLY DESCRIBED AS FOLLOWS: BEGINNING AT A POINT NORTH 67 DEGREES 04 MINUTES 23 SECONDS EAST, 30.00 FEET FROM THE NORTHWEST CORNER OF SAID BLOCK 11; THENCE SOUTH 22 DEGREES 53 MINUTES 49 SECONDS EAST BEING 30 FEET EAST OF AND PARALLEL TO THE WEST LINE OF SAID BLOCK 11, 356.34 FEET TO A POINT ON THE NORTH RIGHT OF WAY LINE OF FORT STREET (M-3) (100' WIDE); THENCE SOUTH 59 DEGREES 52 MINUTES 49 SECONDS WEST ALONG SAID NORTH LINE OF FORT STREET, 60.48 FEET; THENCE NORTH 22 DEGREES 53 MINUTES 49 SECONDS WEST BEING 30 FEET WEST OF AND PARALLEL TO THE EAST LINE OF SAID BLOCK 12, 363.91 FEET TO THE SOUTH RIGHT OF WAY LINE OF LAFAYETTE BOULEVARD (70 FEET WIDE); THENCE NORTH 67 DEGREES 04 MINUTES 23 SECONDS EAST ALONG SAID SOUTH LINE OF LAFAYETTE BOULEVARD, 60.00 FEET TO THE POINT OF BEGINNING.

CONTAINING 21,607.68 SQUARE FEET OR 0.50 ACRES OF LAND.

NOWAK & FRAUS ENGINEERS  
 46777 WOODWARD AVE.  
 PONTIAC, MI 48342-5032  
 TEL. (248) 332-7931  
 FAX. (248) 332-8257

REVISED: 06-21-2024

SCALE	DATE	DRAWN	JOB NO.	SHEET
1" = 60'	05-10-2023	K.N.	1728-04	1 of 1