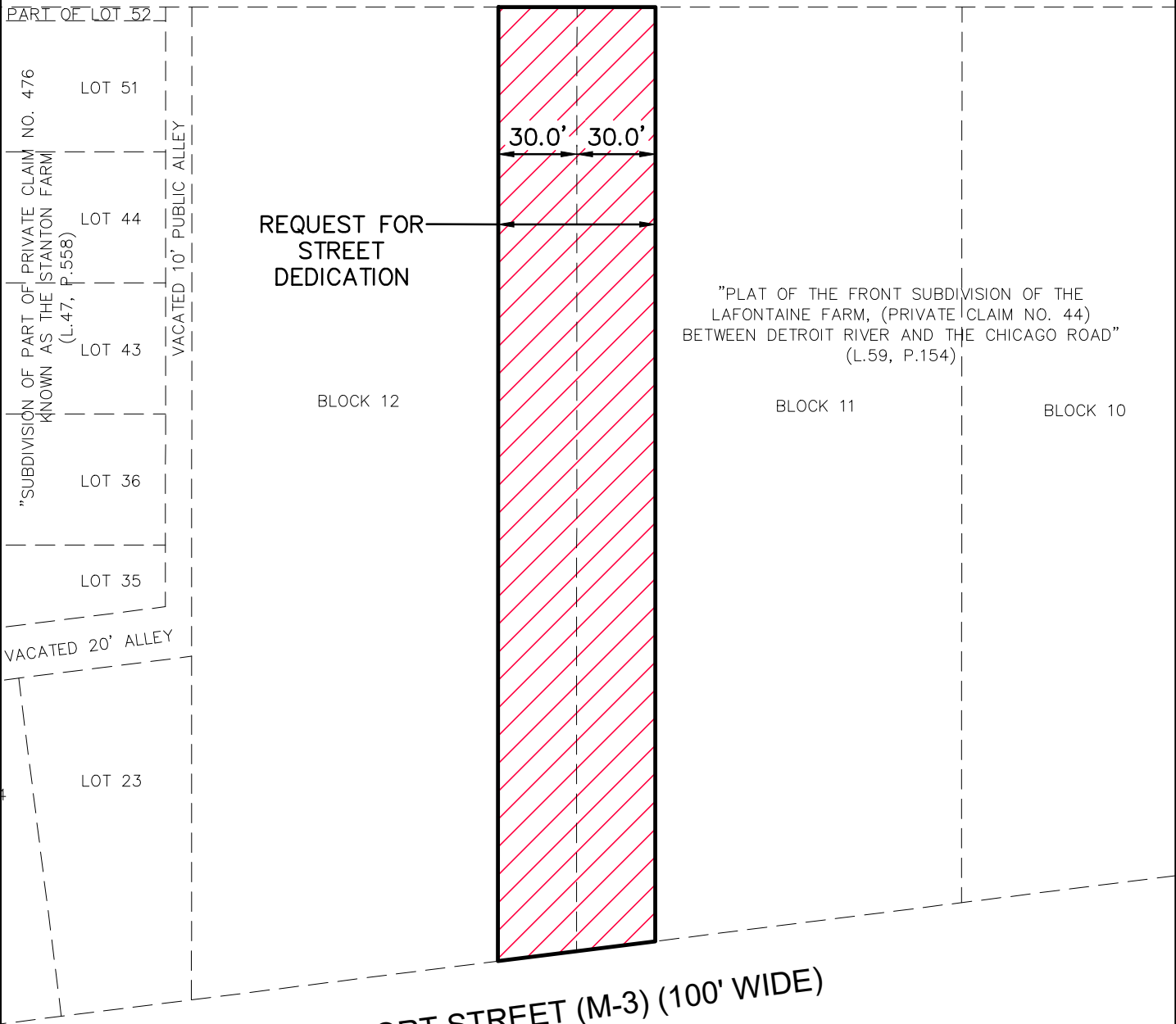


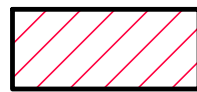
# Exhibit A

## 16TH STREET DEDICATION

LAFAYETTE BOULEVARD (70' WIDE)



### LEGEND



= REQUEST FOR STREET DEDICATION

### LEGAL DESCRIPTION (16TH STREET DEDICATION)

THE EAST 30 FEET OF BLOCK 12 AND THE WEST 30 FEET OF BLOCK 12 LYING BETWEEN THE SOUTH LINE OF LAFAYETTE BOULEVARD (70 FEET WIDE) AND THE NORTHERLY LINE OF FORT STREET (100 FEET WIDE) OF "PLAT OF THE FRONT SUBDIVISION OF THE LAFONTAINE FARM, (PRIVATE CLAIM NO. 44) BETWEEN THE DETROIT RIVER AND CHICAGO ROAD", CITY OF DETROIT, WAYNE COUNTY, MICHIGAN, AS RECORDED IN LIBER 59 OF DEEDS, ON PAGE 154, WAYNE COUNTY RECORDS.

CONTAINING 21,607.68 SQUARE FEET OR 0.50 ACRES OF LAND.



**NF ENGINEERS**  
 NOWAK & FRAUS ENGINEERS  
 46777 WOODWARD AVE.  
 PONTIAC, MI 48342-5032  
 TEL. (248) 332-7931  
 FAX. (248) 332-8257

|          |            |       |         |        |
|----------|------------|-------|---------|--------|
| SCALE    | DATE       | DRAWN | JOB NO. | SHEET  |
| 1" = 60' | 05-10-2023 | K.N.  | I728-04 | 1 of 1 |