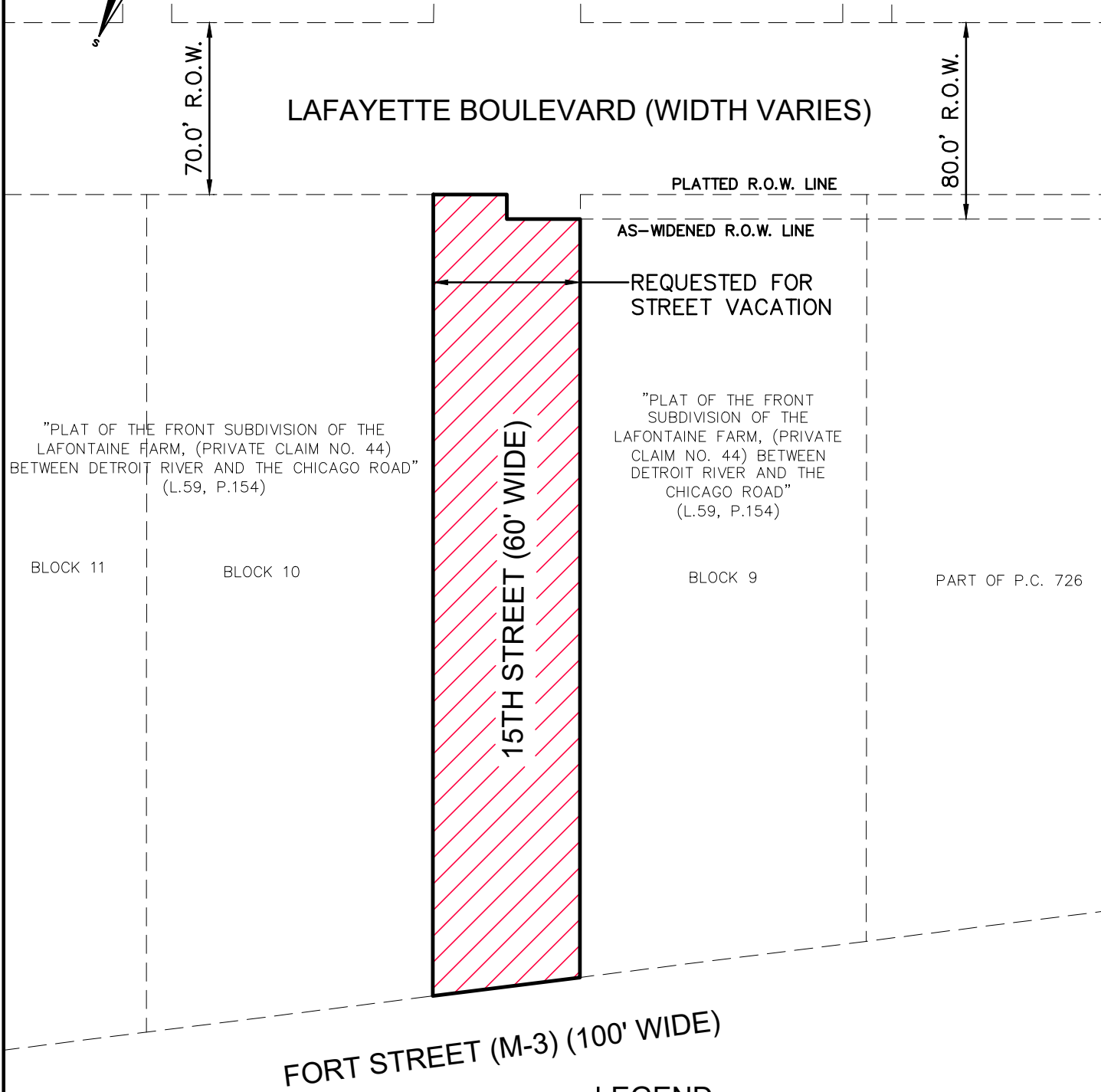
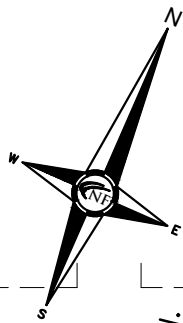


Exhibit A

15TH STREET VACATION



LEGEND



= REQUEST FOR STREET VACATION

LEGAL DESCRIPTION (15TH STREET VACATION)

PART OF 15TH STREET (60 FEET WIDE), THE WESTERLY 1/2 LYING BETWEEN FORT STREET (100 FEET WIDE) AND LAFAYETTE BOULEVARD (70 FEET WIDE), ABUTTING TO BLOCK 10 AND THE EASTERLY 1/2 LYING BETWEEN FORT STREET (100 FEET WIDE) AND LAFAYETTE BOULEVARD (80 FEET WIDE), ABUTTING TO BLOCK 9 OF "PLAT OF THE FRONT SUBDIVISION OF THE LAFONTAINE FARM, (PRIVATE CLAIM NO. 44) BETWEEN THE DETROIT RIVER AND CHICAGO ROAD", CITY OF DETROIT, WAYNE COUNTY, MICHIGAN, AS RECORDED IN LIBER 59 OF DEEDS, ON PAGE 154, WAYNE COUNTY RECORDS.



NF ENGINEERS
 NOWAK & FRAUS ENGINEERS
 46777 WOODWARD AVE.
 PONTIAC, MI 48342-5032
 TEL. (248) 332-7931
 FAX. (248) 332-8257

CONTAINING 19,083.66 SQUARE FEET OR 0.44 ACRES OF LAND.

SCALE	DATE	DRAWN	JOB NO.	SHEET
1" = 60'	05-10-2023	K.N.	1728-04	1 of 1