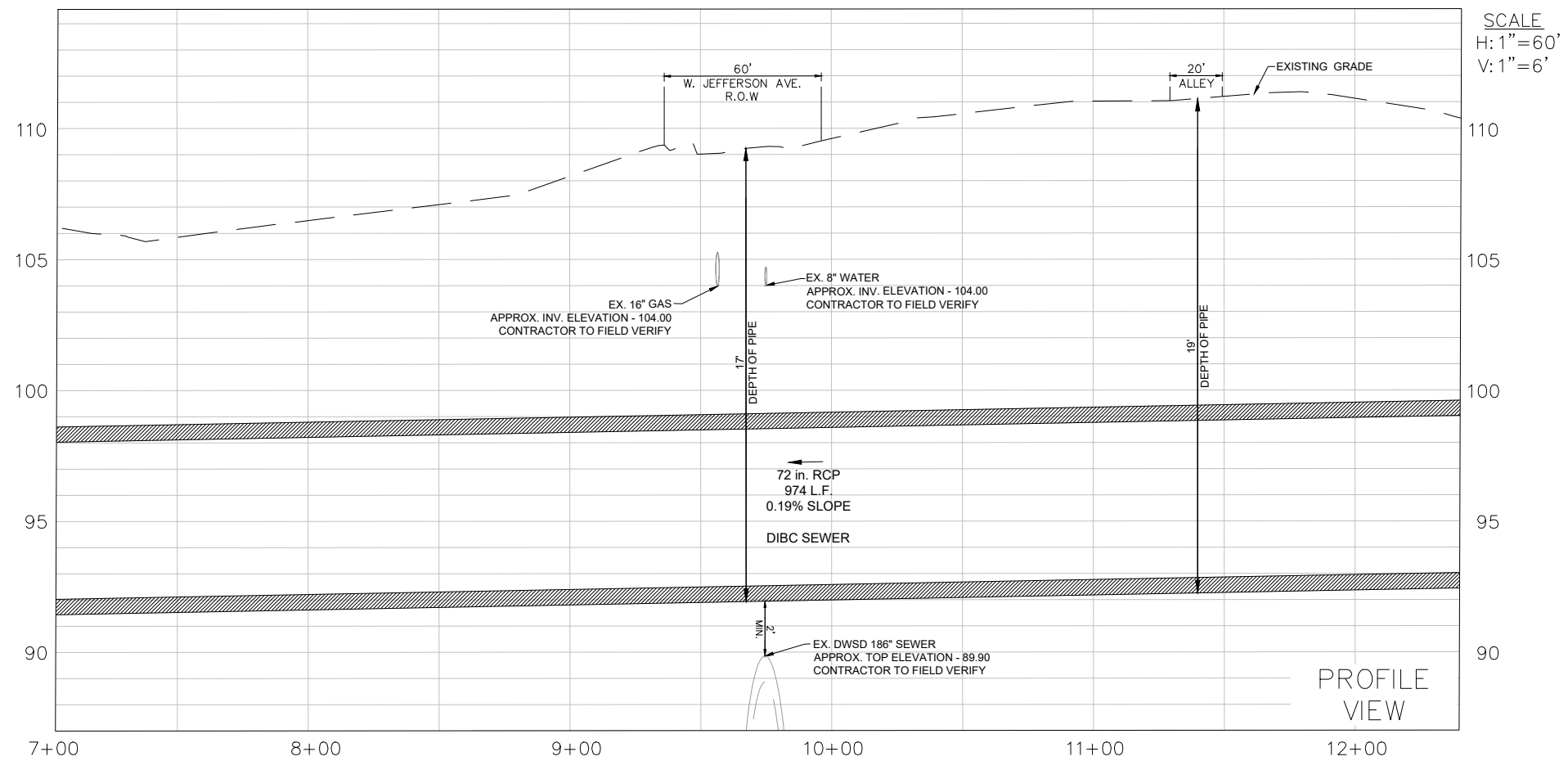


LOCATION MAP
NOT TO SCALE

PLAN VIEW SCALE 1"=30'



SCALE
H: 1"=60'
V: 1"=6'

PROFILE VIEW

LEGEND

- PROPOSED 72 in. RCP
- PROPOSED ENCROACHMENT



FOR THE PROTECTION OF UNDERGROUND UTILITIES THE CONTRACTOR SHALL CALL 1-800-482-7171 A MINIMUM OF 72 HOURS PRIOR TO EXCAVATING IN THE VICINITY OF UTILITY LINES. ALL 'MISS DIG' MEMBERS WILL BE NOTIFIED. THIS DOES NOT RELIEVE THE CONTRACTOR OF HIS RESPONSIBILITY.

THIS ITEM HAS BEEN DIGITALLY SIGNED AND SEALED BY:

ON THE DATE ADJACENT TO THE SEAL
PRINTED COPIES OF THIS DOCUMENT ARE NOT CONSIDERED SIGNED AND SEALED AND THE SIGNATURE MUST BE VERIFIED ON ANY ELECTRONIC COPIES.

2818 Cypress Ridge Blvd, Suite 200, Wesley Chapel, FL 33544 (813) 435-2600

AMBASSADOR BRIDGE

DRAWN BY: D. NEMBARD
CHECKED BY: S. GAINES
DATE: 5-8-2024
PROJECT MANAGER: SCOTT KORPI

DETROIT INTERNATIONAL BRIDGE COMPANY

COUNTY	CITY	FINANCIAL PROJECT ID
WAYNE	DETROIT	

U.S. CUSTOMS & BORDER PROTECTION

ENCROACHMENT EXHIBIT

REF. DWG. NO.	
SHEET NO.	1
	1