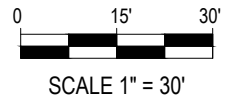


ALLEY (18 FT. WD.)

S87°28'57"W
109.21'(R) 108.99'(M)

ROW



ALLEY (10 FT. WD.)

8627 ALPINE
PID:16025110
LOT 582

8621 ALPINE
PID:16025111
LOT 583

8611 ALPINE
PID:16025112
LOT 584

EX. HOUSE

"FRISCHKORN'S TIREMAN PARK SUB.",
L.34 OF PLATS, P.43, W.C.R.
8605 ALPINE
PID:16025113
LOT 585

PROPOSED PARKLAND
0.64 ACRES±

8599 ALPINE
PID:16025114
LOT 586

8591 ALPINE
PID:16025115
LOT 587

8585 ALPINE
PID:16025116
LOT 588

109.681'(R) 109.51'(M)

N87°34'51"E

EX. HOUSE

8577 ALPINE
PID:16025117

LOT 589

35.00'(F&M)

ALPINE ST.

(50 FT. WD. - PUBLIC)

S5°23'09"E

233.79'(M)

233.99'(M)

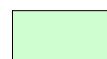
N3°50'09"W

ROW

ROW

SURVEY LEGEND

- R.O.W. RIGHT-OF-WAY
- W.C.R. WAYNE COUNTY RECORDS
- L. P. LIBER, PAGE
- (M)(R) MEASURED, RECORDED VALUES



PROPOSED PARKLANDS - FINAL DESCRIPTION

CLIENT: CITY OF DETROIT - GENERAL SERVICES DEPARTMENT

EXHIBIT 7 - PARKLAND CONVERSION

SMITHGROUP

JOB NO. 11343.001	PAGE 1 OF 2
DRAWN CAL	DATE 5/23/2024
500 GRISWOLD STREET 313.983.3600	DETROIT, MI 48226 www.smithgroup.com

PARKLAND CONVERSION ALPINE AND JOY

LEGAL DESCRIPTION: (COMBINED PARCEL - PROPOSED PARKLAND)

Lots 582-588, inclusive, of "Frischkorn's Tireman Park Subdivision", as recorded in Liber 34 of Plats, Page 43, Wayne County Records, Wayne County, Michigan, containing 0.64 acres of land, more or less, being subject to any terms, conditions, or restrictions of record, if any.

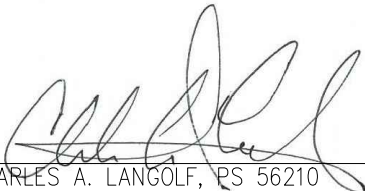
EXISTING PARCELS INCLUDED:

- 8627 ALPINE PID: 16025110
- 8621 ALPINE PID: 16025111
- 8611 ALPINE PID: 16025112
- 8605 ALPINE PID: 16025113
- 8599 ALPINE PID: 16025114
- 8591 ALPINE PID: 16025115
- 8585 ALPINE PID: 16025116

CERTIFICATE:

I HEREBY CERTIFY THAT THIS EXHIBIT WAS PREPARED UNDER MY DIRECT SUPERVISION.

SMITHGROUP



CHARLES A. LANGOLF, PS 56210
 PROFESSIONAL SURVEYOR
 STATE OF MICHIGAN
 charles.langolf@smithgroup.com

May 23, 2024
 DATE:



CLIENT: CITY OF DETROIT - GENERAL SERVICES DEPARTMENT	
EXHIBIT 7 - PARKLAND CONVERSION	
SMITHGROUP	JOB NO. 11343.001 PAGE 2 OF 2
	DRAWN CAL DATE 5/23/2024
	500 GRISWOLD STREET DETROIT, MI 48226 313.983.3600 www.smithgroup.com

PARKLAND CONVERSION ALPINE AND JOY