

Janice M. Winfrey
City Clerk

City of Detroit
OFFICE OF THE CITY CLERK

Andre P. Gilbert II
Deputy City Clerk

DEPARTMENT PETITION REFERENCE COMMUNICATION

To: The Department or Commission Listed Below

From: Janice M Winfrey, Detroit City Clerk

The following petition is herewith referred to you for report and recommendation to the City Council.

In accordance with that body's directive, kindly return the same with your report in duplicate within four (4) weeks.

Petition No.	2024-264
Name of Petitioner	Detroit & Northern LLC
Description of Petition	Petition request for various encroachments; at grade trench drain, below grade pipe, balcony, below grade storm pipe, existing vault, and above grade building elements into the east-west public alley and Griswold St. right-of-way.
Type of Petition	Alley Vacation/Encroachment/Utility Vacation
Submission Date	07/19/24
Concerned Departments	Media Services, Building & Safety Engineering, Police Department, Fire Department, Municipal Parking Department, Transportation Department, Health Department, General Services Department
Petitioner Contact	Leon Evans P.E. Project Manager Giffels Webster 28 W. Adams, Suite 1200 Detroit, MI 48226 (P): 313-962-4442 levans@giffelswebster.com



**CITY OF DETROIT
DEPARTMENT OF PUBLIC WORKS
CITY ENGINEERING DIVISION**

**COLEMAN A. YOUNG MUNICIPAL CENTER
2 WOODWARD AVE. SUITE 601
DETROIT, MICHIGAN 48226
PHONE: (313) 224-3949 TTY: 711
WWW.DETROITMI.GOV**

To: Clerk's Office
From: The Department of Public Works
City Engineering Division
MapsandRecordsBureau@DetroitMI.Gov
(313) 224-3970

Petitioner:
Detroit & Northern LLC
1133 Griswold Street
Detroit, MI, 48226

On behalf of the above-mentioned petitioner the Department of Public Works: City Engineering Division is submitting a petition request for the action below. The petitioner has received a project consultation from the Department of Public Works: City Engineering Division and has been advised the following:

Type of action recommended:

Detroit & Northern LLC request for various encroachments; at grade trench drain, below grade pipe, balcony, below grade storm pipe, existing vault, and above grade building elements into the east-west public alley and Griswold St. right-of-way.

Raven Wright
Supervisor of Maps & Records
Department of Public Works
City Engineering Division
313-224-3985



**CITY OF DETROIT
DEPARTMENT OF PUBLIC WORKS
CITY ENGINEERING DIVISION**

**COLEMAN A. YOUNG MUNICIPAL CENTER
2 WOODWARD AVE. SUITE 601
DETROIT, MICHIGAN 48226
PHONE: (313) 224-3949 TTY: 711
WWW.DETROITMI.GOV**



**CITY OF DETROIT
DEPARTMENT OF PUBLIC WORKS
CITY ENGINEERING DIVISION**

**COLEMAN A. YOUNG MUNICIPAL CENTER
2 WOODWARD AVE. SUITE 601
DETROIT, MICHIGAN 48226
PHONE: (313) 224-3949 TTY: 711
WWW.DETROITMI.GOV**



May 16, 2023

Honorable Detroit City Council
City Engineer
200 Coleman A. Young Municipal Center
2 Woodward Avenue
Detroit, Michigan 48226

RE: Giffels Webster - Petition requesting encroachments of public rights of way

Giffels Webster, 26 W. Adams, Suite 1200, Detroit, Michigan 48226 on behalf of Detroit & Northern LLC, 401
15 Westwooden rd, Suite 102, Livonia, Michigan, respectfully requests the following encroachments into the
public rights of way in the block bounded by Griswold Street, Michigan Avenue, State Street, Washington
Boulevard:

- Proposed above ground encroachment for a balcony from 117.00 feet above grade to 122.75 feet
above grade extending into the Easement Easement and Public Alley right-of-way.

See the referenced Exhibit for details.

Levels of the requested encroachments can be found in the attachment, enclosed herein.

If you should have any questions, please do not hesitate to contact me at (P) 313 962 4442 (M) 606 654 7645
or at levans@giffelswebster.com

Respectfully,

Leon Evans P.E.
Project Manager
Giffels Webster

26 W Adams, Suite 1200 | Detroit, Michigan 48226 | Phone: (313) 962-4442 | Fax: (313) 962-4066



May 16, 2023

Honorable Detroit City Council
City Engineer
200 Coleman A. Young Municipal Center
2 Woodward Avenue
Detroit, Michigan 48226

RE: Giffels Webster - Petition requesting encroachments of public rights of way

Giffels Webster, 26 W. Adams, Suite 1200, Detroit, Michigan 48226 on behalf of Detroit & Northern LLC, 401
15 Westwooden rd, Suite 102, Livonia, Michigan, respectfully requests the following encroachments into the
public rights of way in the block bounded by Griswold Street, Michigan Avenue, State Street, Washington
Boulevard:

- Proposed below ground encroachment for an existing vault from 0 feet to 13.5 feet below grade into
City-owned Easement right of way.

See the referenced Exhibit for details.

Levels of the requested encroachments can be found in the attachment, enclosed herein.

If you should have any questions, please do not hesitate to contact me at (P) 313 962 4442 (M) 606 654 7645
or at levans@giffelswebster.com

Respectfully,

Leon Evans P.E.
Project Manager
Giffels Webster

26 W Adams, Suite 1200 | Detroit, Michigan 48226 | Phone: (313) 962-4442 | Fax: (313) 962-4066



May 24, 2023

Honorable Detroit City Council
City Engineer
200 Coleman A. Young Municipal Center
2 Woodward Avenue
Detroit, Michigan 48226

RE: Giffels Webster - Petition requesting encroachments of public rights of way

Giffels Webster, 26 W. Adams, Suite 1200, Detroit, Michigan 48226 on behalf of Detroit & Northern LLC, 401
15 Westwooden rd, Suite 102, Livonia, Michigan, respectfully requests the following encroachments into the
public rights of way in the block bounded by Griswold Street, Michigan Avenue, State Street, Washington
Boulevard:

- Proposed at grade encroachment for a trench drain into Griswold Street right-of-way
- Proposed below grade encroachment for a storm pipe into Griswold Street right-of-way

See the referenced Exhibit for details.

Levels of the requested encroachments can be found in the attachment, enclosed herein.

If you should have any questions, please do not hesitate to contact me at (P) 313 962 4442 (M) 606 654 7645
or at levans@giffelswebster.com

Respectfully,

Leon Evans P.E.
Project Manager
Giffels Webster

26 W Adams, Suite 1200 | Detroit, Michigan 48226 | Phone: (313) 962-4442 | Fax: (313) 962-4066



July 31, 2023

Honorable Detroit City Council
City Engineer
200 Coleman A. Young Municipal Center
2 Woodward Avenue
Detroit, Michigan 48226

RE: Giffels Webster - Petition requesting encroachments of public rights of way

Giffels Webster, 26 W. Adams, Suite 1200, Detroit, Michigan 48226 on behalf of Detroit & Northern LLC, 401
15 Westwooden rd, Suite 102, Livonia, Michigan, respectfully requests the following encroachments into the
public rights of way in the block bounded by Griswold Street, Michigan Avenue, State Street, Washington
Boulevard:

- Proposed above ground encroachment for building elements from 0.00 feet above grade to 7.60 feet
above grade extending, a sewerage into the Easement Easement and Public Alley right of way.
- These building elements shall include a 42" PVC or 48" HDPE building material on the existing
structure, and a concrete base at the structure level, to connect storm for sanitary purposes and
for building fire building overlight.
- Proposed above ground encroachment for building elements from 31.00 feet above grade to 33.00
feet above grade extending into the Easement Easement and Public Alley right of way.
- These building elements shall include a 42" PVC or 48" HDPE building material.
- Proposed above ground encroachment for building elements from 03.00 feet above grade to 09.00
feet above grade extending into the Easement Easement and Public Alley right of way.
- These building elements shall include a balcony with 42" PVC or 48" HDPE building material
extending from ground level.

See the referenced Exhibit for details.

Levels of the requested encroachments can be found in the attachment, enclosed herein.

If you should have any questions, please do not hesitate to contact me at (P) 313 962 4442 or at
levans@giffelswebster.com

Respectfully,

Leon Evans P.E.
Project Manager
Giffels Webster

26 W Adams, Suite 1200 | Detroit, Michigan 48226 | Phone: (313) 962-4442 | Fax: (313) 962-4066



**CITY OF DETROIT
DEPARTMENT OF PUBLIC WORKS
CITY ENGINEERING DIVISION**

**COLEMAN A. YOUNG MUNICIPAL CENTER
2 WOODWARD AVE. SUITE 601
DETROIT, MICHIGAN 48226
PHONE: (313) 224-3949 TTY: 711
WWW.DETROITMI.GOV**



January 18, 2022

**Honorable Detroit City Council
C/o Detroit City Clerk
200 Coleman A. Young Municipal Center
2 Woodward Avenue
Detroit, Michigan 48226**

RE: Giffels Webster - Petition requesting encroachments of public rights-of-way.

Giffels Webster, 28 W. Adams, Suite 1200, Detroit, Michigan 48226 on behalf of 1145 Griswold Street LLC, 401 S Washington sq. Suite 102, Lansing, Michigan, respectfully requests the following encroachments into the public rights-of-way in the block bounded by Griswold Street, Michigan Avenue, State Street, Washington Boulevard:

- Proposed above ground encroachment for a canopy from 9.9 feet above grade to 11.6 feet above grade extending 8.4 feet into the Griswold Street right-of-way.
- Proposed above grade encroachment for a canopy 9.4 feet above grade to 12.8 feet above grade extending 7.6 feet into the State Street right-of-way.

Limits of the requested encroachments can be found in the attachment, enclosed herein.

If you should have any questions, please do not hesitate to contact me at (P) 313.962.4442 (M) 508.654.7845 or at levans@giffelswebster.com.

Respectfully,

Leon Evans P.E.,
Project Manager
Giffels Webster



**CITY OF DETROIT
DEPARTMENT OF PUBLIC WORKS
CITY ENGINEERING DIVISION**

**COLEMAN A. YOUNG MUNICIPAL CENTER
2 WOODWARD AVE. SUITE 601
DETROIT, MICHIGAN 48226
PHONE: (313) 224-3949 TTY: 711
WWW.DETROITMI.GOV**



CITY OF DETROIT
 DEPARTMENT OF PUBLIC WORKS
 CITY ENGINEERING DIVISION

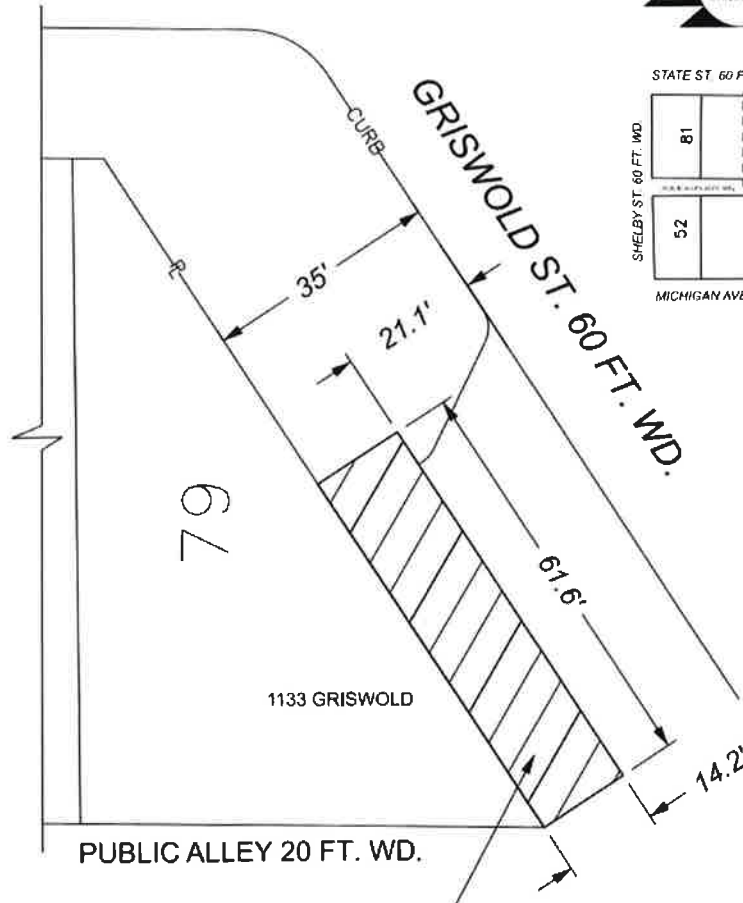
COLEMAN A. YOUNG MUNICIPAL CENTER
 2 WOODWARD AVE. SUITE 601
 DETROIT, MICHIGAN 48226
 PHONE: (313) 224-3949 TTY: 711
 WWW.DETROITMI.GOV

MAP-23-72

STATE ST. 60 FT. WD.



SHELBY ST. 60 FT. WD.



1133 GRISWOLD

PUBLIC ALLEY 20 FT. WD.

EXISTING VAULT, 61.6' L X 14.2' W
 FROM 0' TO 13.5' BELOW GRADE

- REQUEST ENCROACHMENT

(FOR OFFICE USE ONLY)

CARTO 28 B

B					
A					
	DESCRIPTION	DESN	CHKD	APPD	DATE
	REVISIONS				
	DRAWN BY	LC	CHECKED	AP	
	DATE	08-07-2023	APPROVED	JD	

REQUEST ENCROACHMENT
 INTO GRISWOLD ST. 60 FT. WD.
 FOR EXISTING
 BELOW GRADE VAULT

CITY OF DETROIT
 CITY ENGINEERING DIVISION
 SURVEY BUREAU

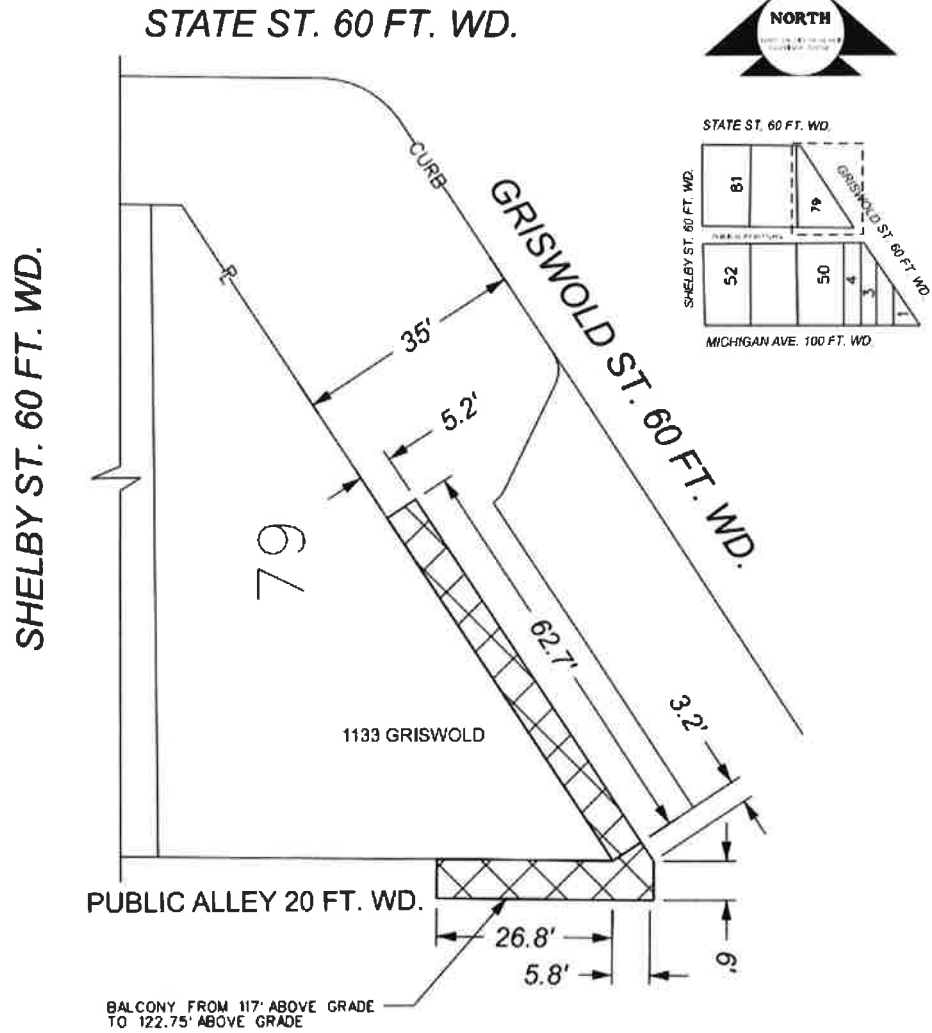
JOB NO. 23-72
 DRWG. NO. 23-72_1



CITY OF DETROIT
DEPARTMENT OF PUBLIC WORKS
CITY ENGINEERING DIVISION

COLEMAN A. YOUNG MUNICIPAL CENTER
2 WOODWARD AVE. SUITE 601
DETROIT, MICHIGAN 48226
PHONE: (313) 224-3949 TTY: 711
WWW.DETROITMI.GOV

MAP-23-72



- REQUEST ENCROACHMENT

(FOR OFFICE USE ONLY)

CARTO 28 B

B					
A					
DESCRIPTION	DEPT.	CHILD	APPD.	DATE	
REVISIONS					
DRAWN BY	LC	CHECKED	AP		
DATE	08-07-2023	APPROVED	JD		

REQUEST ENCROACHMENT
INTO GRISWOLD ST. 60 FT. WD.
AND PUBLIC ALLEY RIGHT OF WAY
FOR ABOVE GRADE BALCONY

CITY OF DETROIT
CITY ENGINEERING DIVISION
SURVEY BUREAU

JOB NO. 23-72

DRWG. NO. 23-72_2



**CITY OF DETROIT
DEPARTMENT OF PUBLIC WORKS
CITY ENGINEERING DIVISION**

**COLEMAN A. YOUNG MUNICIPAL CENTER
2 WOODWARD AVE. SUITE 601
DETROIT, MICHIGAN 48226
PHONE: (313) 224-3949 TTY: 711
WWW.DETROITMI.GOV**



CITY OF DETROIT
 DEPARTMENT OF PUBLIC WORKS
 CITY ENGINEERING DIVISION

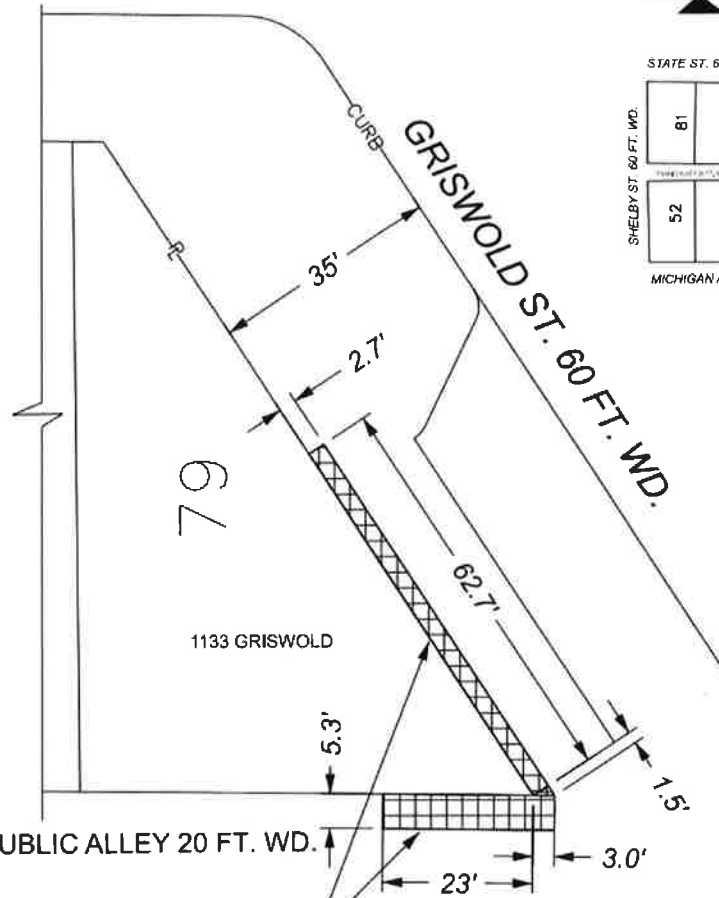
COLEMAN A. YOUNG MUNICIPAL CENTER
 2 WOODWARD AVE. SUITE 601
 DETROIT, MICHIGAN 48226
 PHONE: (313) 224-3949 TTY: 711
 WWW.DETROITMI.GOV

MAP-23-72

STATE ST. 60 FT. WD.



SHELBY ST. 60 FT. WD.



ABOVE GROUND BUILDING ELEMENTS
 FROM 21' ABOVE GRADE TO 23'
 ABOVE GRADE



- REQUEST ENCROACHMENT

(FOR OFFICE USE ONLY)

CARTO 28 B

B				
A				
DESCRIPTION	REV#	CHKD	APPD	DATE
REVISIONS				
DRAWN BY	LC	CHECKED	AP	
DATE	08-07-2023	APPROVED	JD	

REQUEST ENCROACHMENT
 INTO GRISWOLD ST. 60 FT. WD.
 AND PUBLIC ALLEY RIGHT OF WAY
 FOR ABOVE GRADE BUILDING
 ELEMENTS

CITY OF DETROIT CITY ENGINEERING DIVISION SURVEY BUREAU	
JOB NO.	23-72
DRWG. NO.	23-72_3



**CITY OF DETROIT
DEPARTMENT OF PUBLIC WORKS
CITY ENGINEERING DIVISION**

**COLEMAN A. YOUNG MUNICIPAL CENTER
2 WOODWARD AVE. SUITE 601
DETROIT, MICHIGAN 48226
PHONE: (313) 224-3949 TTY: 711
WWW.DETROITMI.GOV**



CITY OF DETROIT
DEPARTMENT OF PUBLIC WORKS
CITY ENGINEERING DIVISION

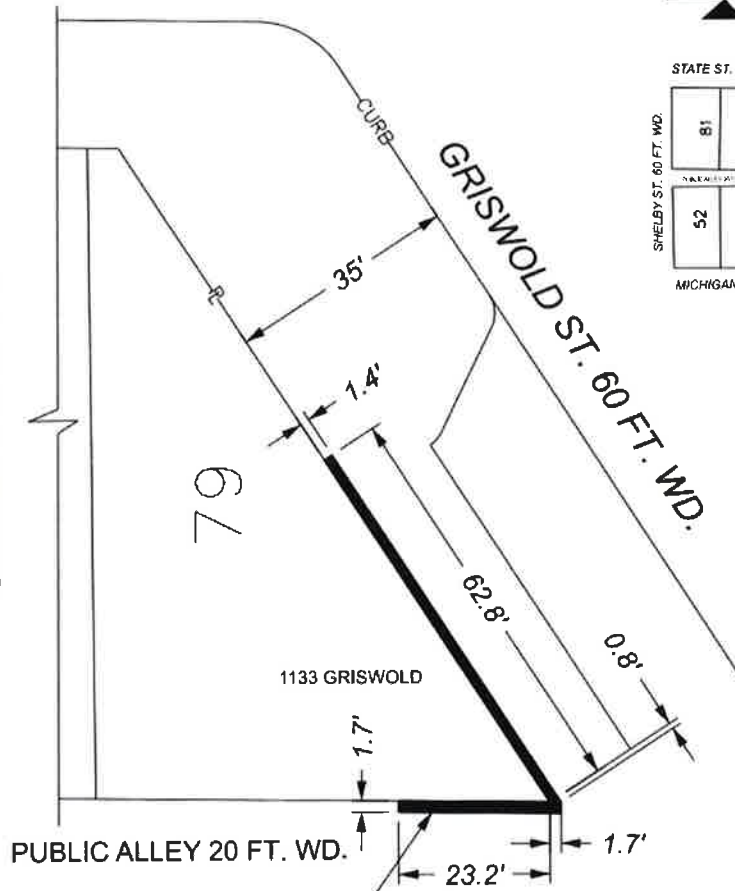
COLEMAN A. YOUNG MUNICIPAL CENTER
2 WOODWARD AVE. SUITE 601
DETROIT, MICHIGAN 48226
PHONE: (313) 224-3949 TTY: 711
WWW.DETROITMI.GOV

MAP-23-72

STATE ST. 60 FT. WD.



SHELBY ST. 60 FT. WD.



ABOVE GROUND BUILDING ELEMENTS FROM .00' ABOVE GRADE TO 7.00' ABOVE GRADE (APPROX.).

■ - REQUEST ENCROACHMENT

(FOR OFFICE USE ONLY)

CARTO 28 B

B	DESCRIPTION	BY	CHKD	APPD	DATE
A					
	BROWN BY	LC	CHECKED	AP	
	DATE	08-07-2023	APPROVED	JD	

REQUEST ENCROACHMENT INTO GRISWOLD ST. 60 FT. WD. AND PUBLIC ALLEY RIGHT OF WAY FOR ABOVE GRADE BUILDING ELEMENTS

CITY OF DETROIT CITY ENGINEERING DIVISION SURVEY BUREAU	
JOB NO.	23-72
DRWG. NO.	23-72_4



**CITY OF DETROIT
DEPARTMENT OF PUBLIC WORKS
CITY ENGINEERING DIVISION**

**COLEMAN A. YOUNG MUNICIPAL CENTER
2 WOODWARD AVE. SUITE 601
DETROIT, MICHIGAN 48226
PHONE: (313) 224-3949 TTY: 711
WWW.DETROITMI.GOV**

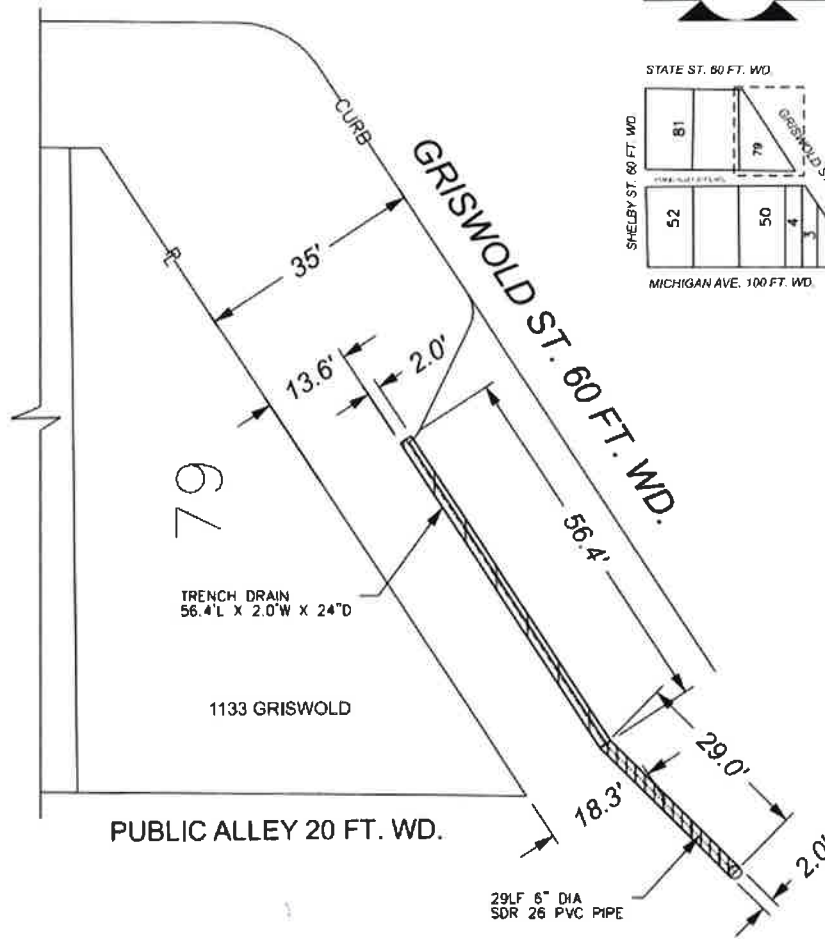


MAP-23-72

STATE ST. 60 FT. WD.



SHELBY ST. 60 FT. WD.



- REQUEST ENCROACHMENT
(AT GRADE TRENCH DRAIN 65.4'L X 2.0'W X 24"D)

- REQUEST ENCROACHMENT
(BELOW GRADE STORM PIPE 29.0'L X 2.0'W X 3.0'D)

(FOR OFFICE USE ONLY)

CARTO 28 B

B					
A					
	DESCRIPTION	DATE	CHKD	APP	DATE
	REVISIONS				
	DRAWN BY	LC	CHECKED	AP	
	DATE	08-07-2023	APPROVED	JD	

REQUEST ENCROACHMENT
INTO GRISWOLD ST. 60 FT. WD.
FOR AT AND BELOW GRADE
STREET ELEMENTS

CITY OF DETROIT
CITY ENGINEERING DIVISION
SURVEY BUREAU

JOB NO. 23-72
DRWG. NO. 23-72_5



**CITY OF DETROIT
DEPARTMENT OF PUBLIC WORKS
CITY ENGINEERING DIVISION**

**COLEMAN A. YOUNG MUNICIPAL CENTER
2 WOODWARD AVE. SUITE 601
DETROIT, MICHIGAN 48226
PHONE: (313) 224-3949 TTY: 711
WWW.DETROITMI.GOV**
