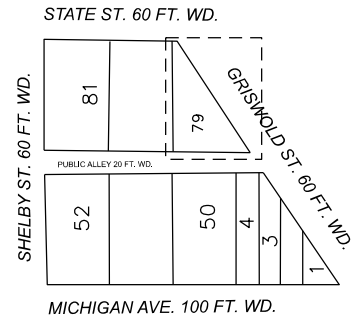
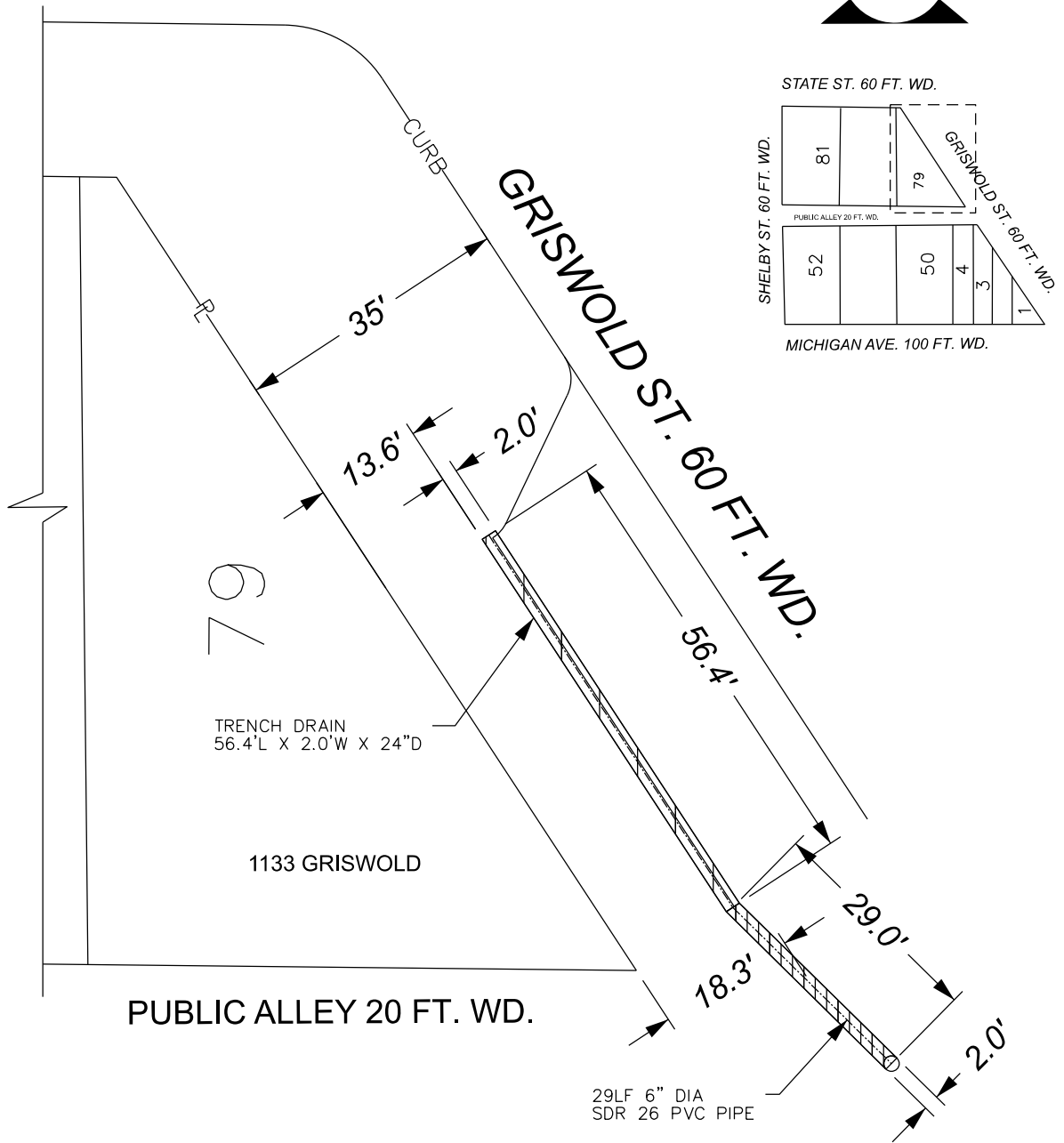


STATE ST. 60 FT. WD.



SHELBY ST. 60 FT. WD.



TRENCH DRAIN
56.4'L X 2.0'W X 24"D

1133 GRISWOLD

PUBLIC ALLEY 20 FT. WD.

29LF 6" DIA
SDR 26 PVC PIPE

 - REQUEST ENCROACHMENT
(AT GRADE TRENCH DRAIN 65.4'L X 2.0'W X 24"D)

 - REQUEST ENCROACHMENT
(BELOW GRADE STORM PIPE 29.0'L X 2.0'W X 3.0'D)

(FOR OFFICE USE ONLY)

CARTO 28 B

B					
A					
DESCRIPTION	DRWN	CHKD	APPD	DATE	
REVISIONS					
DRAWN BY	LC	CHECKED	AP		
DATE	08-07-2023	APPROVED	JD		

REQUEST ENCROACHMENT
INTO GRISWOLD ST. 60 FT. WD.
FOR AT AND BELOW GRADE
STREET ELEMENTS

CITY OF DETROIT
CITY ENGINEERING DIVISION
SURVEY BUREAU

JOB NO. 23-72
DRWG. NO. 23-72_5