

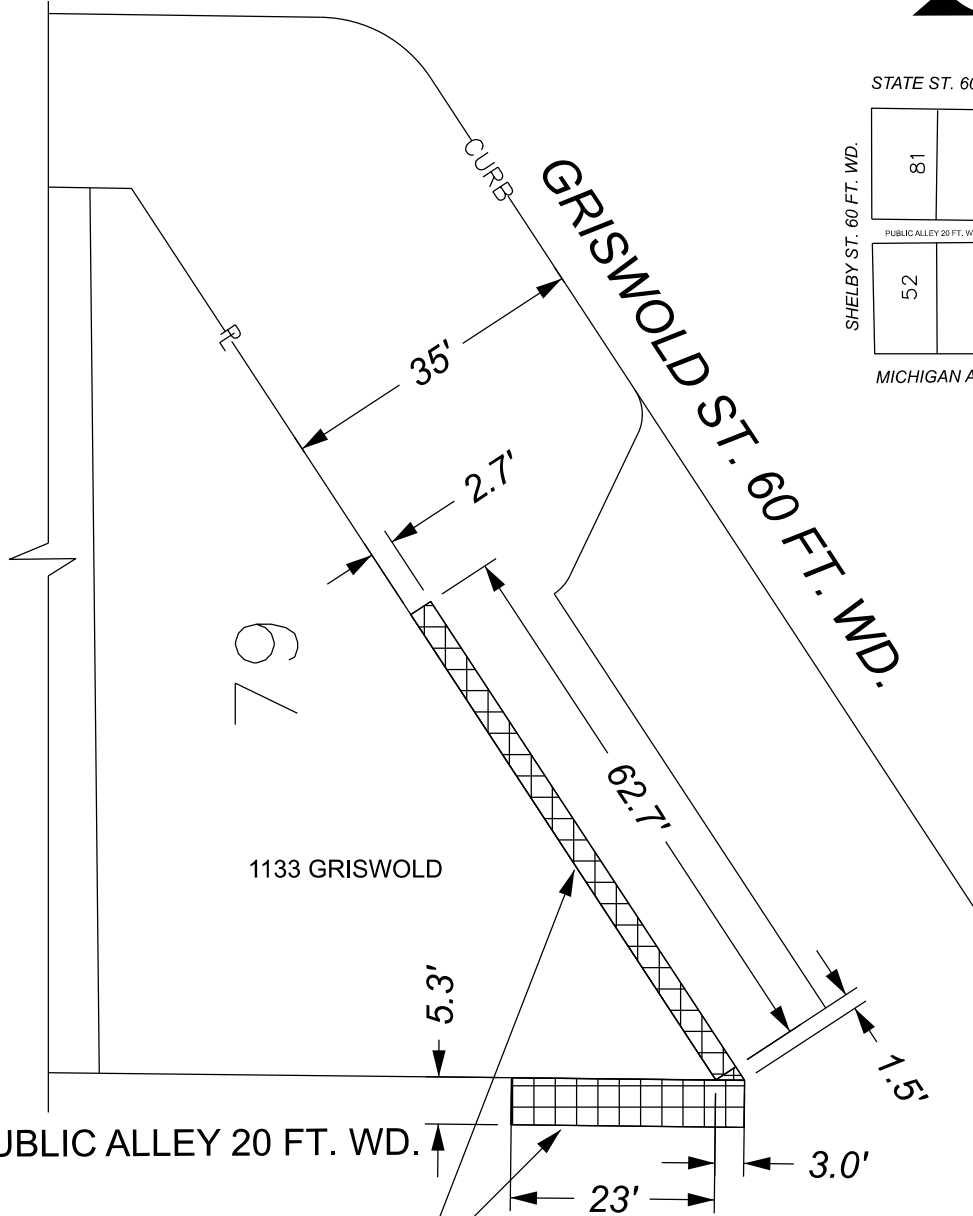
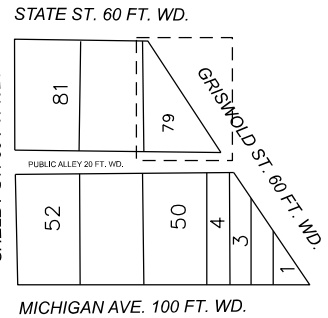
MAP-23-72

STATE ST. 60 FT. WD.



SHELBY ST. 60 FT. WD.

GRISWOLD ST. 60 FT. WD.



ABOVE GROUND BUILDING ELEMENTS FROM 21' ABOVE GRADE TO 23' ABOVE GRADE



- REQUEST ENCROACHMENT

(FOR OFFICE USE ONLY)

CARTO 28 B

B					
A					
DESCRIPTION	DRWN	CHKD	APPD	DATE	
REVISIONS					
DRAWN BY	LC	CHECKED	AP		
DATE	08-07-2023	APPROVED	JD		

REQUEST ENCROACHMENT INTO GRISWOLD ST. 60 FT. WD. AND PUBLIC ALLEY RIGHT OF WAY FOR ABOVE GRADE BUILDING ELEMENTS

CITY OF DETROIT CITY ENGINEERING DIVISION SURVEY BUREAU	
JOB NO.	23-72
DRWG. NO.	23-72_3