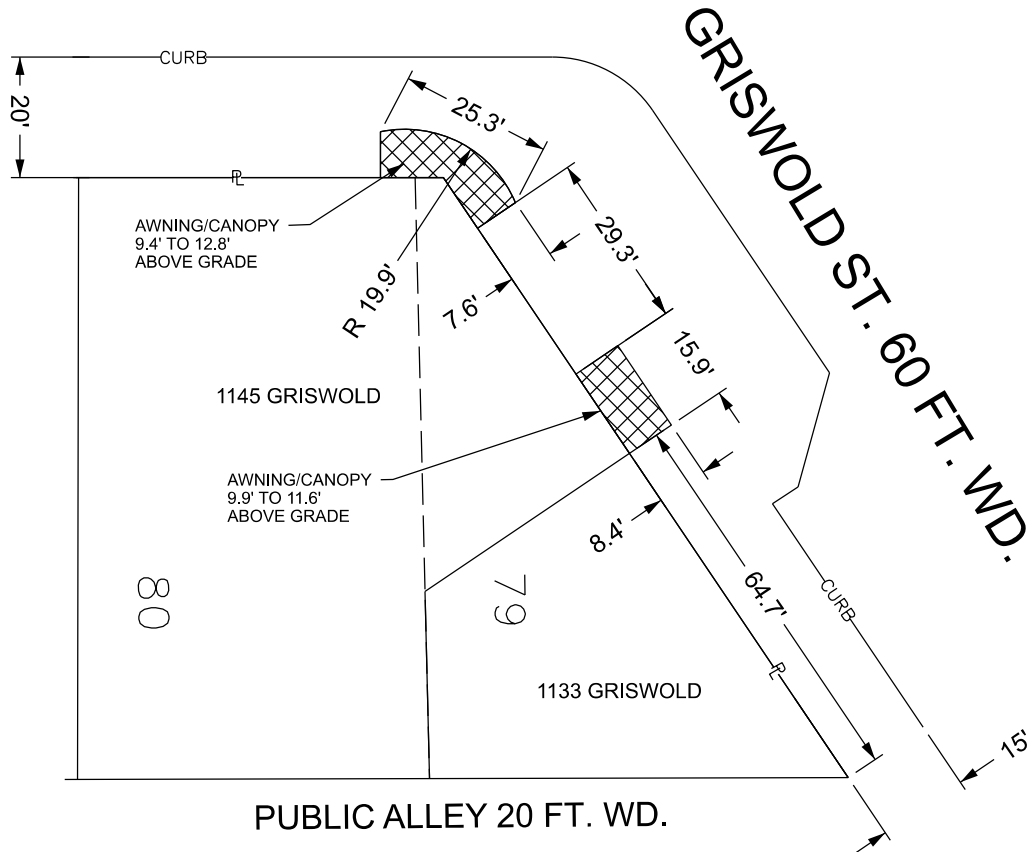




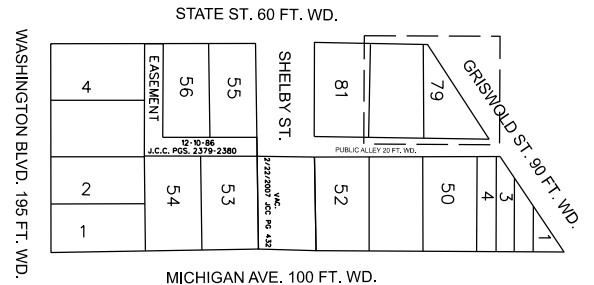
STATE ST. 60 FT. WD.



PUBLIC ALLEY 20 FT. WD.



- REQUEST ABOVE GRADE ENCROACHMENT  
(For Awnings/Canopy)



(FOR OFFICE USE ONLY)

CARTO 28 B

<b>B</b>					
<b>A</b>					
<b>DESCRIPTION</b>	<b>DRWN</b>	<b>CHKD</b>	<b>APPD</b>	<b>DATE</b>	
<b>REVISIONS</b>					
<b>DRAWN BY</b>	LC	<b>CHECKED</b>	RW		
<b>DATE</b>	07-22-2024	<b>APPROVED</b>	RW		

REQUEST ENCROACHMENT  
INTO GRISWOLD ST.  
AND STATE ST.  
AT 1145 GRISWOLD

**CITY OF DETROIT**  
**CITY ENGINEERING DIVISION**  
**SURVEY BUREAU**

**JOB NO.** 23-111

**DRWG. NO.**