

Janice M. Winfrey
City Clerk

City of Detroit
OFFICE OF THE CITY CLERK

Andre P. Gilbert II
Deputy City Clerk

DEPARTMENT PETITION REFERENCE COMMUNICATION

To: The Department or Commission Listed Below

From: Janice M Winfrey, Detroit City Clerk

The following petition is herewith referred to you for report and recommendation to the City Council. June

In accordance with that body's directive, kindly return the same with your report in duplicate within four (4) weeks.

| | |
|-------------------------|---|
| Petition No. | 2024-215 |
| Name of Petitioner | DTE |
| Description of Petition | Petition for request for vacation with an easement a part of the east-west opening dedication of Milford Ave. within the parcel commonly known as 6200 W. Warren Ave. |
| Type of Petition | Alley Vacation/ Encroachment/ Utility Vacation |
| Submission Date | 7/1/2024 |
| Concerned Departments | Department of Public Works, Planning and Development Department, City Engineering Division |
| Petitioner Contact | DTE 1 Energy Plaza Detroit, MI 48226 |



CITY OF DETROIT
DEPARTMENT OF PUBLIC WORKS

COLEMAN A. YOUNG MUNICIPAL CENTER
2 WOODWARD AVE. SUITE 601
DETROIT, MICHIGAN 48226

To: Clerk's Office
From: The Department of Public Works
City Engineering Division
MapsandRecordsBureau@DetroitMI.Gov
(313) 224-3970

Petitioner:
DTE
1 Energy Plaza
Detroit, MI, 48226

On behalf of the above-mentioned petitioner the Department of Public Works: City Engineering Division is submitting a petition request for the action below. The petitioner has received a project consultation from the Department of Public Works: City Engineering Division and has been advised the following:

Type of action recommended:

Request for vacation with an easement a part of the east-west opening dedication of Milford Ave. within the parcel commonly known as 6200 W. Warren Ave.

Raven Wright
Supervisor of Maps & Records
Department of Public Works
City Engineering Division
313-224-3985

William J. Wade (DTE Corporate Real Estate Associate)
1 Energy Plaza
Detroit MI, 48226

City of Detroit
Department of Public Works- Maps and Records Bureau

To whom this may concern,

DTE's PMO team is doing a project at Warren Service Center (6200 W. Warren Detroit MI). The City thinks there is still a public street running through the site (Milford St). We believe this was vacated many years ago. We searched our records and there is no reference of this road in the deed or any of the documents. Most of these documents are from the 1950s (DTE purchased the site from Ford in 1956). We were advised that a vacation with an easement is the best route for this scenario, it is our hope that you view our request favorably. If you have any questions or concerns, please feel free to contact me.

Kind regards,

William J Wade

DTE Corporate Real Estate

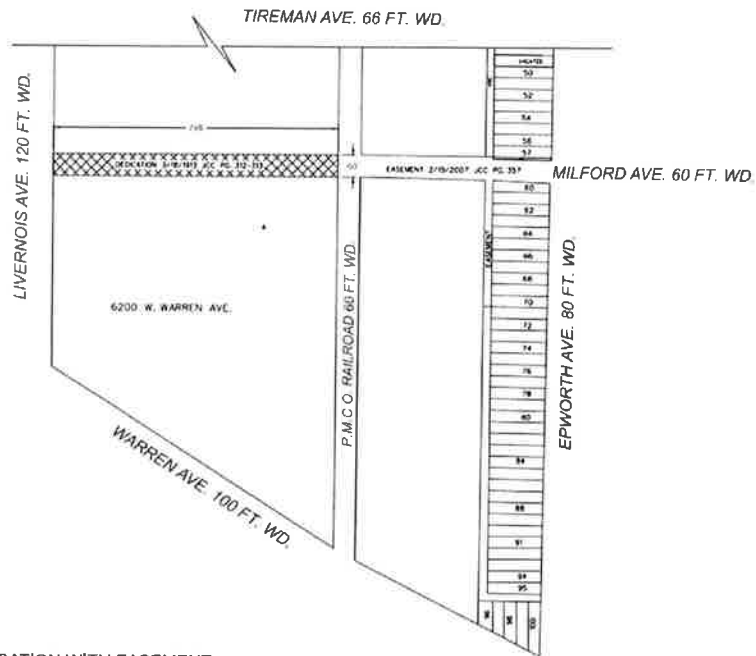
For the last 10 years I have been a part of Corporate real estate overseeing aspects of lease and acquisition projects. This role has required coordination with internal and external stakeholders, attention to timelines and budgets, negotiating and collaborating with cross functional teams to ensure the success of the project.

I have 10 years of experience in Corporate real estate managing aspects of lease and acquisition projects. I've coordinated with internal and external stakeholders, attended to timelines and budgets, negotiated and collaborated with cross functional teams to ensure the success of the project.

I have 10 years of experience in Corporate real estate managing aspects of lease and acquisition projects, coordinating with internal/ external stakeholders, attending to timelines and budgets, negotiating and collaborating to ensure the success of the projects.

Yes, 10+ years of experience with Corporate Real Estate project management. I collaborate with stakeholders, attend to timelines and budgets, negotiate with cross functional teams with ease.

MAP-24-81



 - REQUEST VACATION WITH EASEMENT

(FOR OFFICE USE ONLY)

CARTO 14-15 E

| | | | | | |
|---|-------------|------------|----------|------|--|
| B | | | | | |
| A | | | | | |
| | DESCRIPTION | REVISED | BY | DATE | |
| | DRAWN BY | AP | CHECKED | LC | |
| | DATE | 06-05-2024 | APPROVED | RW | |

REQUEST VACATION WITH EASEMENT
TO MILFORD AVE. 60 FT. WD.
BETWEEN LIVERNOIS AVE. AND
PERE MARQUETTE RAILROAD
AT 6200 W. WARREN AVE.

| | |
|---------------------------|-------|
| CITY OF DETROIT | |
| CITY ENGINEERING DIVISION | |
| SURVEY BUREAU | |
| JOB NO. | 24-81 |
| DRWD. NO. | |

