



CITY OF DETROIT
DEPARTMENT OF PUBLIC WORKS
CITY ENGINEERING DIVISION

COLEMAN A. YOUNG MUNICIPAL CENTER
2 WOODWARD AVE. SUITE 601
DETROIT, MICHIGAN 48226
PHONE: (313) 224-3949 TTY: 711
WWW.DETROITMI.GOV

To: Clerk's Office
From: The Department of Public Works
City Engineering Division
MapsandRecordsBureau@DetroitMI.Gov
(313) 224-3970

Petitioner:
Detroit Art, Culture, and Entrepreneurship
2 Woodward Ave.
Detroit, MI, 48226

On behalf of the above-mentioned petitioner the Department of Public Works: City Engineering Division is submitting a petition request for the action below. The petitioner has received a project consultation from the Department of Public Works: City Engineering Division and has been advised the following:

Type of action recommended:

Petition for encroachment into the east-west alley bounded by Philip St. and Manistique St. for the purpose of installing arts alley streetscape.

Raven Wright
Supervisor of Maps and Records
Department of Public Works
City Engineering Division
313-224-3985



CITY OF DETROIT
DEPARTMENT OF PUBLIC WORKS
CITY ENGINEERING DIVISION

COLEMAN A. YOUNG MUNICIPAL CENTER
2 WOODWARD AVE. SUITE 601
DETROIT, MICHIGAN 48226
PHONE: (313) 224-3949 TTY: 711
WWW.DETROITMI.GOV



CITY OF DETROIT
DEPARTMENT OF PUBLIC WORKS
CITY ENGINEERING DIVISION

COLEMAN A. YOUNG MUNICIPAL CENTER
2 WOODWARD AVE. SUITE 601
DETROIT, MICHIGAN 48226
PHONE: (313) 224-3949 TTY: 711
WWW.DETROITMI.GOV



April 20, 2023

Coleman A. Young Municipal Center
City of Detroit Department of Public Works
City Engineering Division
2 Woodward Ave, Suite 601
Detroit, MI 48226

Re: Manistique Arts Alley: Encroachment Petition Cover Letter
MAP-23-44

On behalf of Detroit Art, Culture, and Entrepreneurship, OHM Advisors is writing this cover letter in response to the comments received by the City of Detroit's Department of Public Works in regard to the upcoming Arts Alleys project. The proposed Manistique Arts Alley streetscape is located within the alley southwest of Korte Ave and Manistique Street from Scripps St to Korte St.

At the Scripps St entrance, the existing concrete approach and sidewalk will be removed and replaced. Other improvements include new concrete pavement, removable wood bollards, Arts Alley signage, waste bins, benches, pet waste stations, bike racks, community kiosk/billboard and landscaping. Outside of the alley right of way some fencing is planned for replacement, as well as a new drive approach, some sidewalk removal and replacement within the Philip St right of way, and a driveway across Detroit Land Bank's property from the alley to Phillip St. We also are proposing a new water service and improvements to storm drainage system. The City of Detroit's office of Art, Culture, and Entrepreneurship (ACE) within the City of Detroit's General Services Department will be the owner of the above-referenced Encroachments. ACE will also be responsible for the maintenance and upkeep of these encroachments.

DPW Comments:

- Are the bollards going to be collapsible?
All proposed bollards will be collapsible and removable.

Please contact me with any questions at 313-481-1253 or via e-mail at Zachary.hampton@ohm-advisors.com.

Sincerely,
OHM Advisors

Zachary Hampton, P.E.
Project Engineer

cc: Jack Russo, Project Manager, Detroit ACE
Kareem Srour, Project Manager, Detroit ACE
File



CITY OF DETROIT
DEPARTMENT OF PUBLIC WORKS
CITY ENGINEERING DIVISION

COLEMAN A. YOUNG MUNICIPAL CENTER
2 WOODWARD AVE. SUITE 601
DETROIT, MICHIGAN 48226
PHONE: (313) 224-3949 TTY: 711
WWW.DETROITMI.GOV



CITY OF DETROIT
DEPARTMENT OF PUBLIC WORKS
CITY ENGINEERING DIVISION

COLEMAN A. YOUNG MUNICIPAL CENTER
2 WOODWARD AVE. SUITE 601
DETROIT, MICHIGAN 48226
PHONE: (313) 224-3949 TTY: 711
WWW.DETROITMI.GOV

MAP-23-44

PHILIP ST. 60 FT. WD.

SCRIPPS ST. 60 FT. WD.	154	156	158	160	162	164	166	168	170	172	174	176	178	180	KORTE ST. 60 FT. WD.
ALLEY 18 FT. WD.															
211	209	207	205	203	201	199	197	195	193	191	189	187	185	183	181

MANISTIQUE ST. 60 FT. WD.

- REQUEST ENCROACHMENT
 (NEW CONCRETE PAVEMENT, BOLLARDS, SIGNS, PET STATIONS
 AND ASSOCIATED WATER/POWER INFRASTRUCTURE IMPROVEMENTS)

(FOR OFFICE USE ONLY)

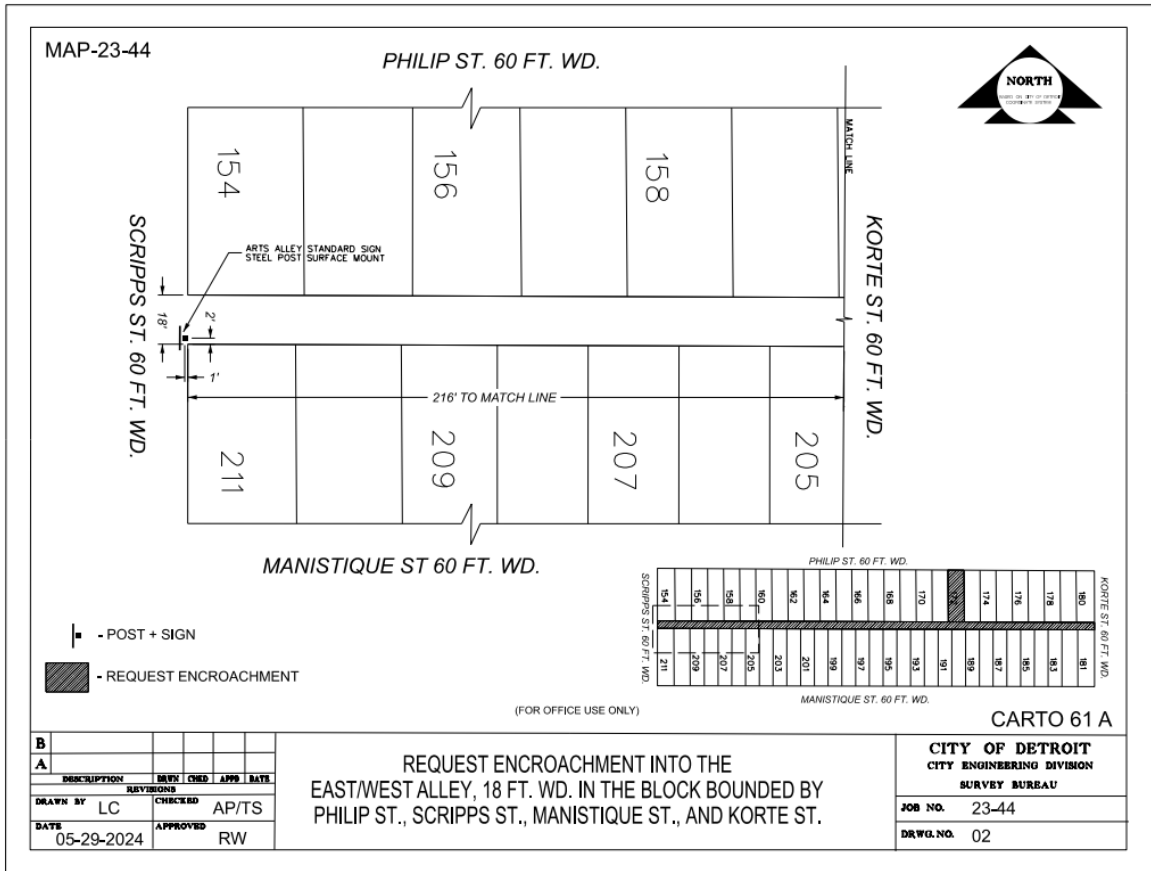
CARTO 61 A

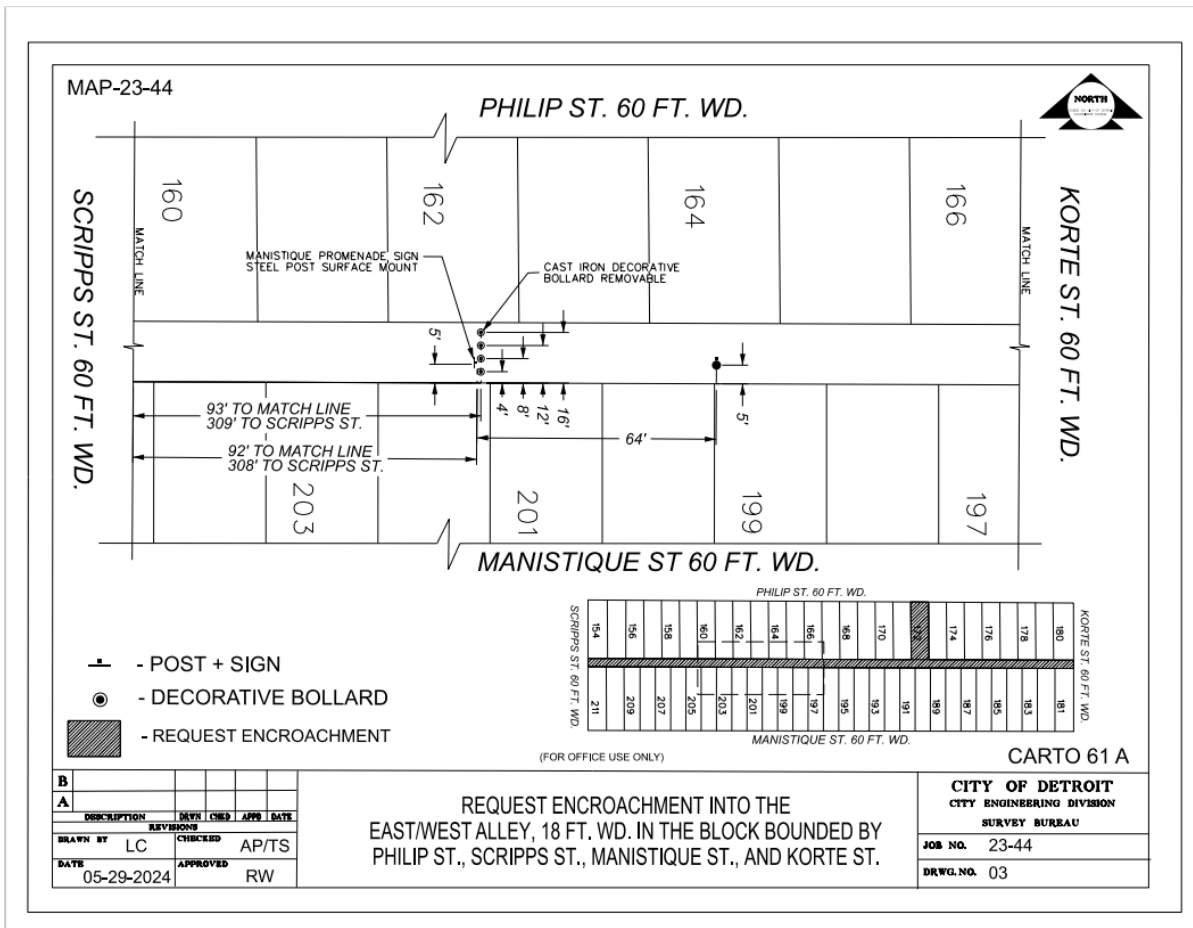
B						REQUEST ENCROACHMENT INTO THE EAST/WEST ALLEY, 18 FT. WD. IN THE BLOCK BOUNDED BY PHILIP ST., SCRIPPS ST., MANISTIQUE ST., AND KORTE ST.	CITY OF DETROIT CITY ENGINEERING DIVISION SURVEY BUREAU
A	DESCRIPTION	DRAWN	CHECKED	APPROVED	DATE		JOB NO. 23-44
	DRAWN BY	CHECKED	APPROVED		DATE		DRWG. NO. 01
	LC	AP/TS	RW		05-31-2024		



CITY OF DETROIT
DEPARTMENT OF PUBLIC WORKS
CITY ENGINEERING DIVISION

COLEMAN A. YOUNG MUNICIPAL CENTER
2 WOODWARD AVE. SUITE 601
DETROIT, MICHIGAN 48226
PHONE: (313) 224-3949 TTY: 711
WWW.DETROITMI.GOV

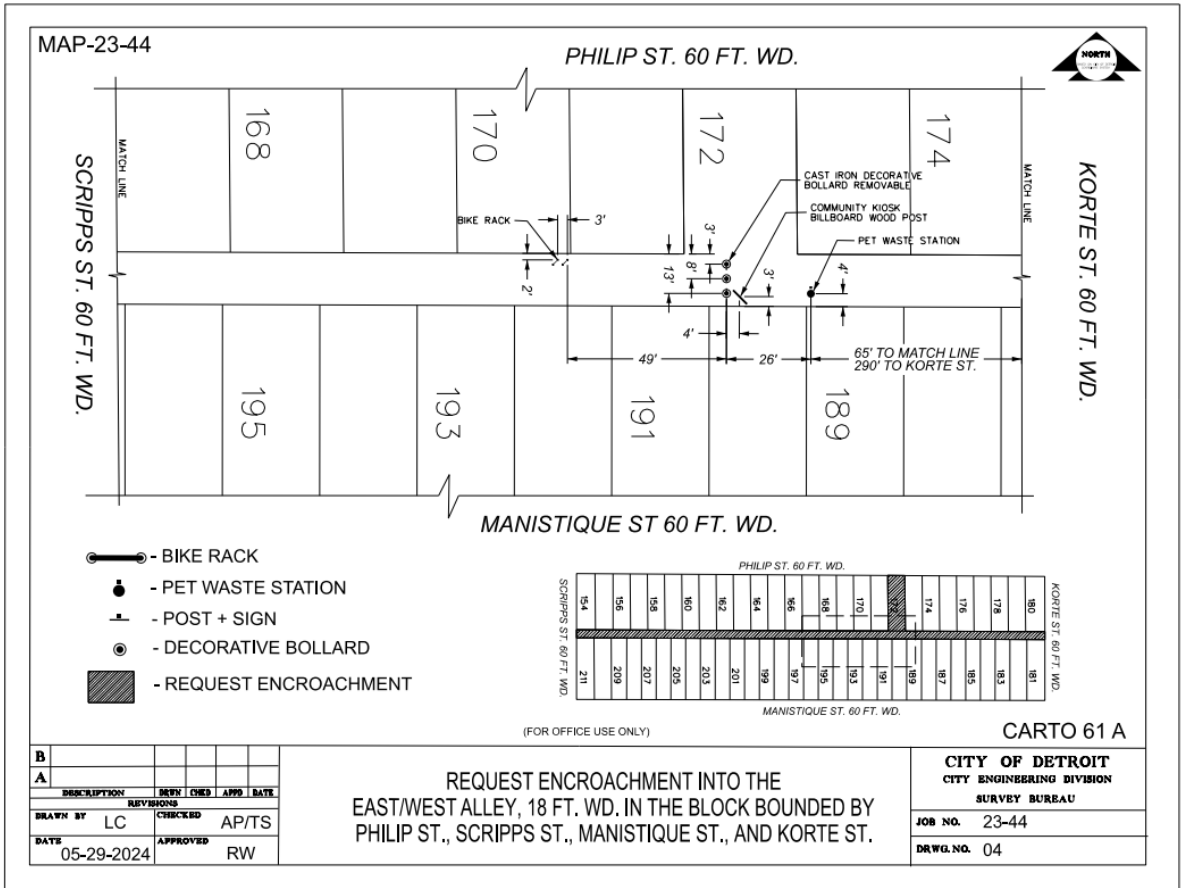






CITY OF DETROIT
 DEPARTMENT OF PUBLIC WORKS
 CITY ENGINEERING DIVISION

COLEMAN A. YOUNG MUNICIPAL CENTER
 2 WOODWARD AVE. SUITE 601
 DETROIT, MICHIGAN 48226
 PHONE: (313) 224-3949 TTY: 711
 WWW.DETROITMI.GOV





CITY OF DETROIT
DEPARTMENT OF PUBLIC WORKS
CITY ENGINEERING DIVISION

COLEMAN A. YOUNG MUNICIPAL CENTER
2 WOODWARD AVE. SUITE 601
DETROIT, MICHIGAN 48226
PHONE: (313) 224-3949 TTY: 711
WWW.DETROITMI.GOV

