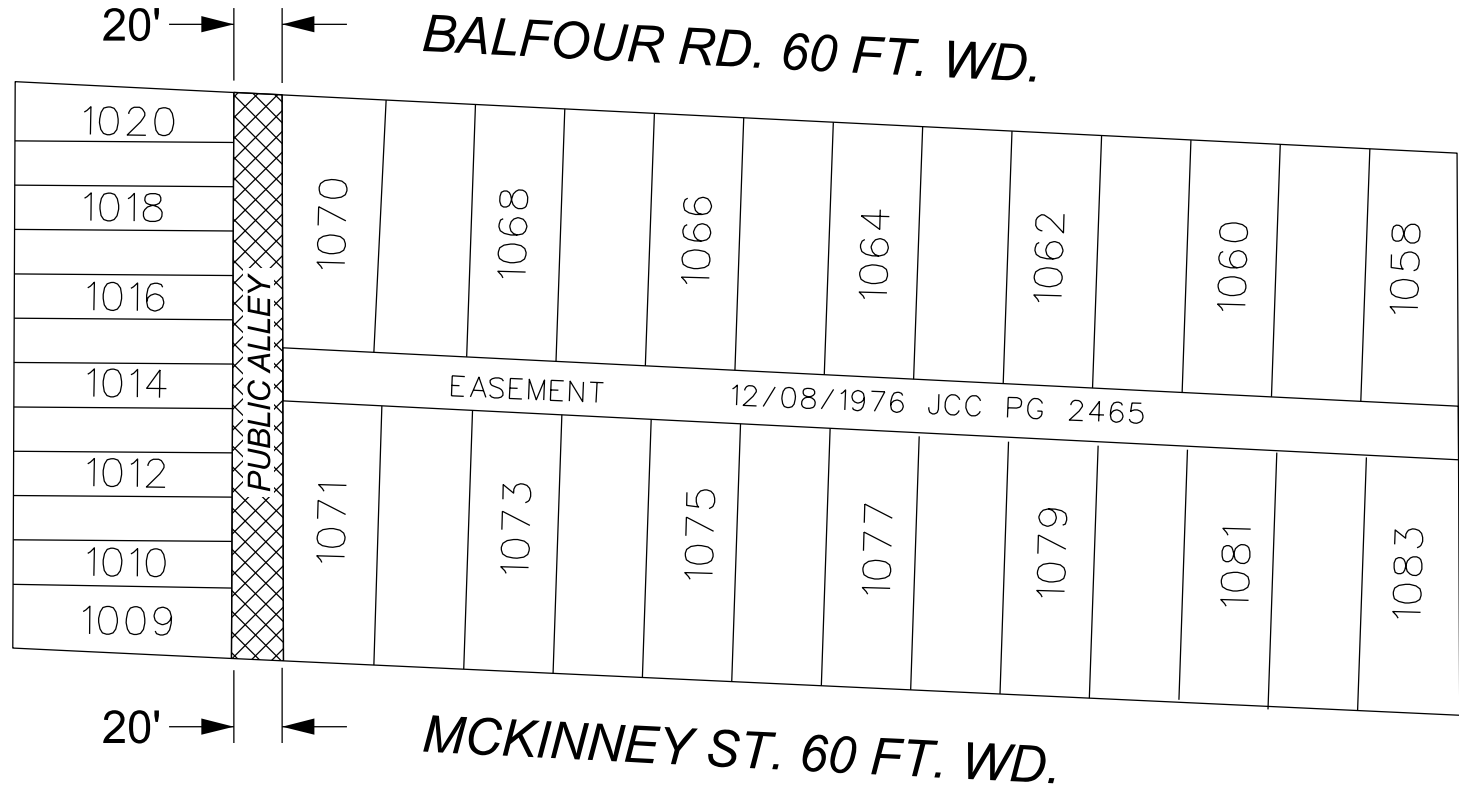


MORANG AVE. 86 FT. WD.



CASINO AVE. 60 FT. WD.

 - VACATION W/ EASEMENT

(FOR OFFICE USE ONLY)

CARTO 97 F

B					
A					
DESCRIPTION	DRWN	CHKD	APPD	DATE	
REVISIONS					
DRAWN BY	TS	CHECKED	AP		
DATE	05-24-2024	APPROVED	RW		

REQUEST TO VACATE WITH UTILITY EASEMENT  
 WESTERN PORTION OF THE PUBLIC ALLEY. 20 FT. WD.  
 BETWEEN BALFOUR RD., MORANG AVE.,  
 MCKINNEY ST., AND CASINO AVE.

CITY OF DETROIT CITY ENGINEERING DIVISION SURVEY BUREAU	
JOB NO.	24-51
DRWG. NO.	