



CITY OF DETROIT  
DEPARTMENT OF PUBLIC WORKS  
CITY ENGINEERING DIVISION

COLEMAN A. YOUNG MUNICIPAL CENTER  
2 WOODWARD AVE. SUITE 601  
DETROIT, MICHIGAN 48226  
PHONE: (313) 224-3949 TTY: 711  
WWW.DETROITMI.GOV

---

To: Clerk's Office  
From: The Department of Public Works  
City Engineering Division  
MapsandRecordsBureau@DetroitMI.Gov  
(313) 224-3970

Petitioner:  
Henry Ford Health  
One Ford Place  
Detroit, MI, 48202

On behalf of the above-mentioned petitioner the Department of Public Works: City Engineering Division is submitting a petition request for the action below. The petitioner has received a project consultation from the Department of Public Works: City Engineering Division and has been advised the following:

Type of action recommended:

Requesting several ROW modifications on behalf of Henry Ford Health to support the redevelopment of the 83-acre north and south campus site referred to as Destination Grand. The proposed redevelopment includes a new Hospital Tower, Shared Services Building (SSB), South Parking Garage, Central Utility Plant (CUP), and associated pedestrian/utility bridges between buildings.

Raven Wright  
Supervisor of Maps & Records  
Department of Public Works  
City Engineering Division  
313-224-3985



**CITY OF DETROIT**  
**DEPARTMENT OF PUBLIC WORKS**  
**CITY ENGINEERING DIVISION**

**COLEMAN A. YOUNG MUNICIPAL CENTER**  
**2 WOODWARD AVE. SUITE 601**  
**DETROIT, MICHIGAN 48226**  
**PHONE: (313) 224-3949 TTY: 711**  
**WWW.DETROITMI.GOV**



October 11, 2023

Honorable Detroit City Council  
C/o Detroit City Clerk  
2 Woodward Avenue  
200 Coleman A. Young Municipal Center  
Detroit, Michigan 48226

RE: Giffels Webster - Request several modifications to the Lincoln Street, W. Milwaukee Street, Trumbull Street, and associated alley rights-of-way within the block generally bounded by West Grand Boulevard, John C. Lodge Service Drive, Holden Street, and Sterling Avenue.

Giffels Webster, 28 W. Adams, Suite 1200, Detroit, Michigan 48226 on behalf of Henry Ford Health, One Ford Place, Detroit, MI, 48202 respectfully requests the following modifications to the right-of-way within the block generally bounded by West Grand Boulevard, John C. Lodge Service Drive, Holden Street, and Sterling Avenue:

**PUBLIC UTILITY AND PUBLIC ACCESS EASEMENT DEDICATIONS:**

- Dedication of a 60.0-foot-wide public utility and public access easement to serve as the new Lincoln Street extending from West Grand Blvd (150 feet wide) south approximately 659.4 feet to the existing Lincoln St public right-of-way (variable width) near the intersection with W Baltimore Street (60 feet wide). The eastern limit of the proposed easement dedication is approximately 154.7 feet west of the western right-of-way line of the current Lincoln Street (100 feet wide) between West Grand Blvd (150 feet wide) and W Milwaukee Street (variable width). The space beneath the existing Henry Ford Cancer Center entrance canopy is excluded from the proposed easement.

**STREET VACATION WITH RESERVATION OF UTILITY AND PUBLIC ACCESS EASEMENT:**

- Vacation with reservation of utility and public access easement of the northern 60.0 feet of W Milwaukee St (variable width) between the proposed relocated Lincoln Street (60 feet wide) to the west and the John C. Lodge Service Drive (variable width) to the east.

**STREET OUTRIGHT VACATIONS:**

- Outright vacation of Lincoln Street (variable width) between W Baltimore Street (66 feet wide) and W Milwaukee Street (variable width).
- Outright vacation of Lincoln Street (100 feet wide) between W Milwaukee Street and West Grand Blvd (150 feet wide).
- Outright vacation of the southern 10.0 feet of W Milwaukee Street (variable width) between the proposed relocated Lincoln Street (60 feet wide) to the west and the John C. Lodge Service Drive (variable width) to the east.
- Outright vacation of Trumbull Street (60 feet wide) from the Holden Street alley between Sterling Avenue (60 feet wide) and Lincoln Street (variable width) north 62.0 feet.

28 W. Adams, Suite 1200 | Detroit, Michigan 48226 | Phone (313) 962-4442 | Fax (313) 962-5068

**ALLEY OUTRIGHT VACATION:**

- Outright vacation of the 16.0-foot-wide public alley extending from W. Baltimore Street (60 feet wide) north 123.9 feet and east 32.0 feet.

**ALLEY EASEMENT VACATIONS:**

- Outright vacation of the 20.0-foot-wide alley easement extending from the Holden Street (66 feet wide) alley between Trumbull Street (60 feet wide) and Lincoln Street (variable width) north 268.0 feet and east 145.0 feet to Lincoln Street (variable width) as established on October 27, 2020, J.C.C. pgs. 1831-3.
- Outright vacation of the 15.0-foot-wide alley easement extending from W Baltimore Street (60 feet wide) between Lincoln Street (variable width) and the John C. Lodge Service Drive (variable width) north 123.9 feet and east 215.0 feet as established on May 17, 2000, J.C.C. pgs. 1130-3.

**ALLEY RIGHT-OF-WAY DEDICATION:**

- Dedication of a 20.0-foot-wide public alley extending from W Milwaukee Street south 96.9 feet adjacent to and along the eastern property line of the parcel at 1115 W Milwaukee Street to the east/west public alley between W Milwaukee Street (variable width) and W Baltimore St (60 feet wide).

Refer to the attached detailed sketch (Attachment A), enclosed herein, for further clarification of the proposed right-of-way modifications.

Giffels Webster has been asked to facilitate the requested right-of-way modifications. We will be working with the City of Detroit's Department of Public Works – Civil Engineering Division, and all stakeholders to achieve vacations and easements that are satisfactory to all interested parties.

The requested right-of-way modifications will neither impede pedestrian and vehicular traffic, nor will it interfere with the maintenance of public rights-of-way, including utility company and Fire and Police Department access.

If you should have any questions, please do not hesitate to contact Michael Marks by phone, at 313.980.1469, or by email, at [mmarks@giffelswebster.com](mailto:mmarks@giffelswebster.com).

Respectfully,

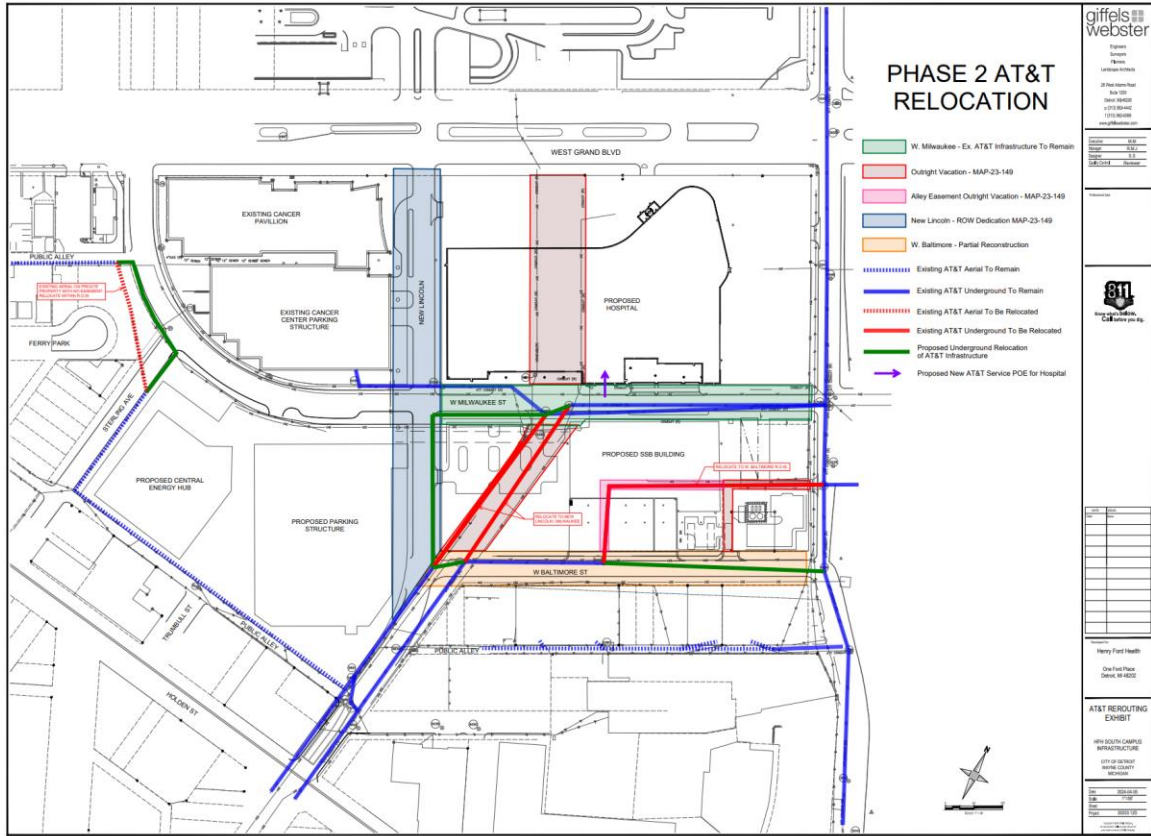
Michael Marks P.E.,  
Partner  
Giffels Webster

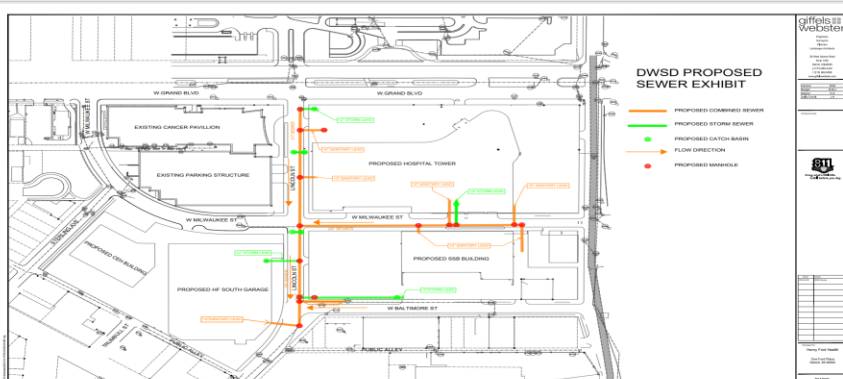
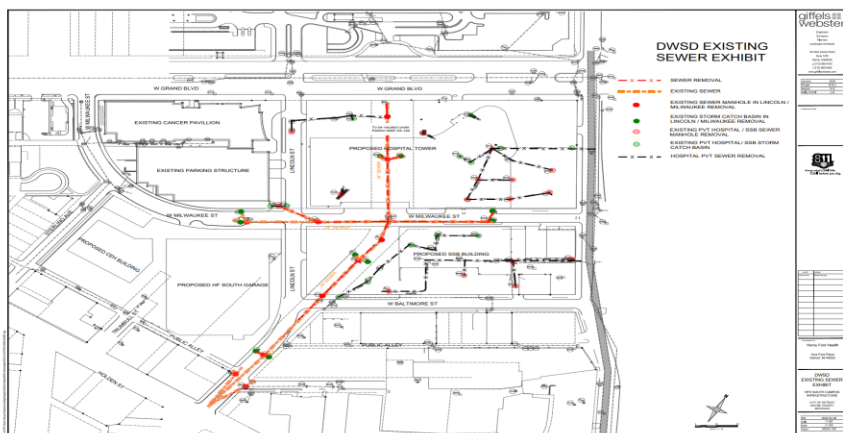
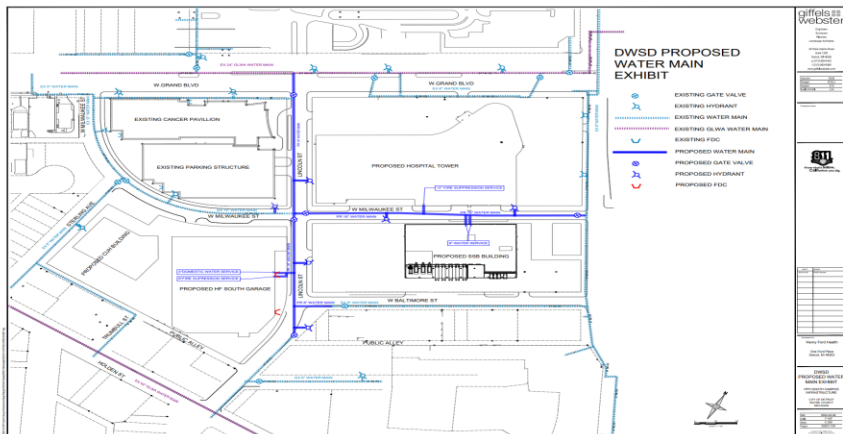
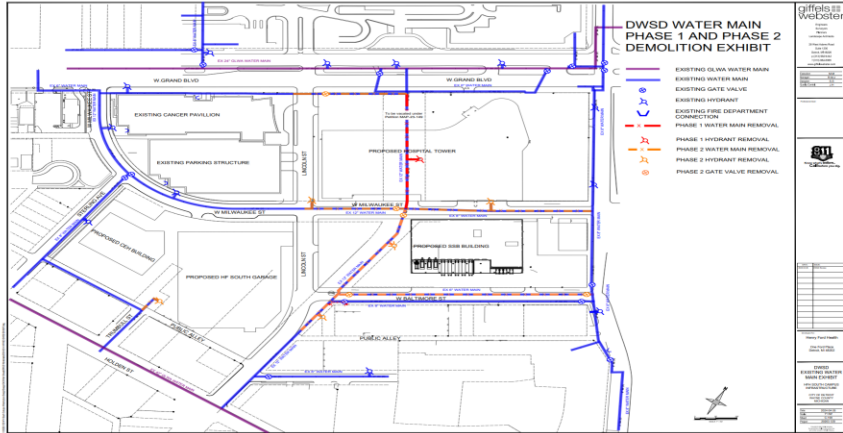
Encl: Attachment A



**CITY OF DETROIT**  
**DEPARTMENT OF PUBLIC WORKS**  
**CITY ENGINEERING DIVISION**

**COLEMAN A. YOUNG MUNICIPAL CENTER**  
**2 WOODWARD AVE. SUITE 601**  
**DETROIT, MICHIGAN 48226**  
**PHONE: (313) 224-3949 TTY: 711**  
**WWW.DETROITMI.GOV**



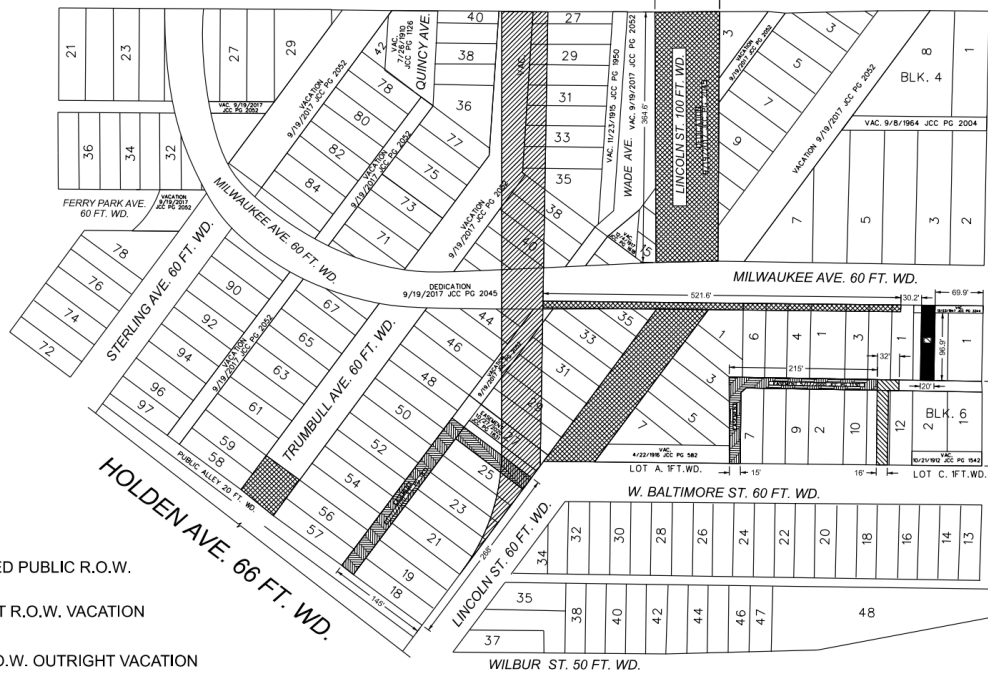




**CITY OF DETROIT**  
**DEPARTMENT OF PUBLIC WORKS**  
**CITY ENGINEERING DIVISION**

**COLEMAN A. YOUNG MUNICIPAL CENTER**  
**2 WOODWARD AVE. SUITE 601**  
**DETROIT, MICHIGAN 48226**  
**PHONE: (313) 224-3949 TTY: 711**  
**WWW.DETROITMI.GOV**

**WEST GRAND BLVD. 150 FT. WD.**



- DEDICATED PUBLIC R.O.W.
- OUTRIGHT R.O.W. VACATION
- ALLEY R.O.W. OUTRIGHT VACATION
- ALLEY EASEMENT VACATION
- ALLEY R.O.W. DEDICATION

(FOR OFFICE USE ONLY)

CARTO 31 D

B					
A					
DESCRIPTION	DRWN	CHKD	APPD	DATE	
REVISIONS					
DRAWN BY	LC	CHECKED	AP		
DATE	02-20-2024	APPROVED	JD		

**HENRY FORD HEALTH SOUTH CAMPUS**  
**R.O.W. MODIFICATION**

<b>CITY OF DETROIT</b>	
CITY ENGINEERING DIVISION	
SURVEY BUREAU	
JOB NO.	23-149
DRWG. NO.	



JOHN C. LODGE EXPRESSWAY  
 SERVICE DRIVE