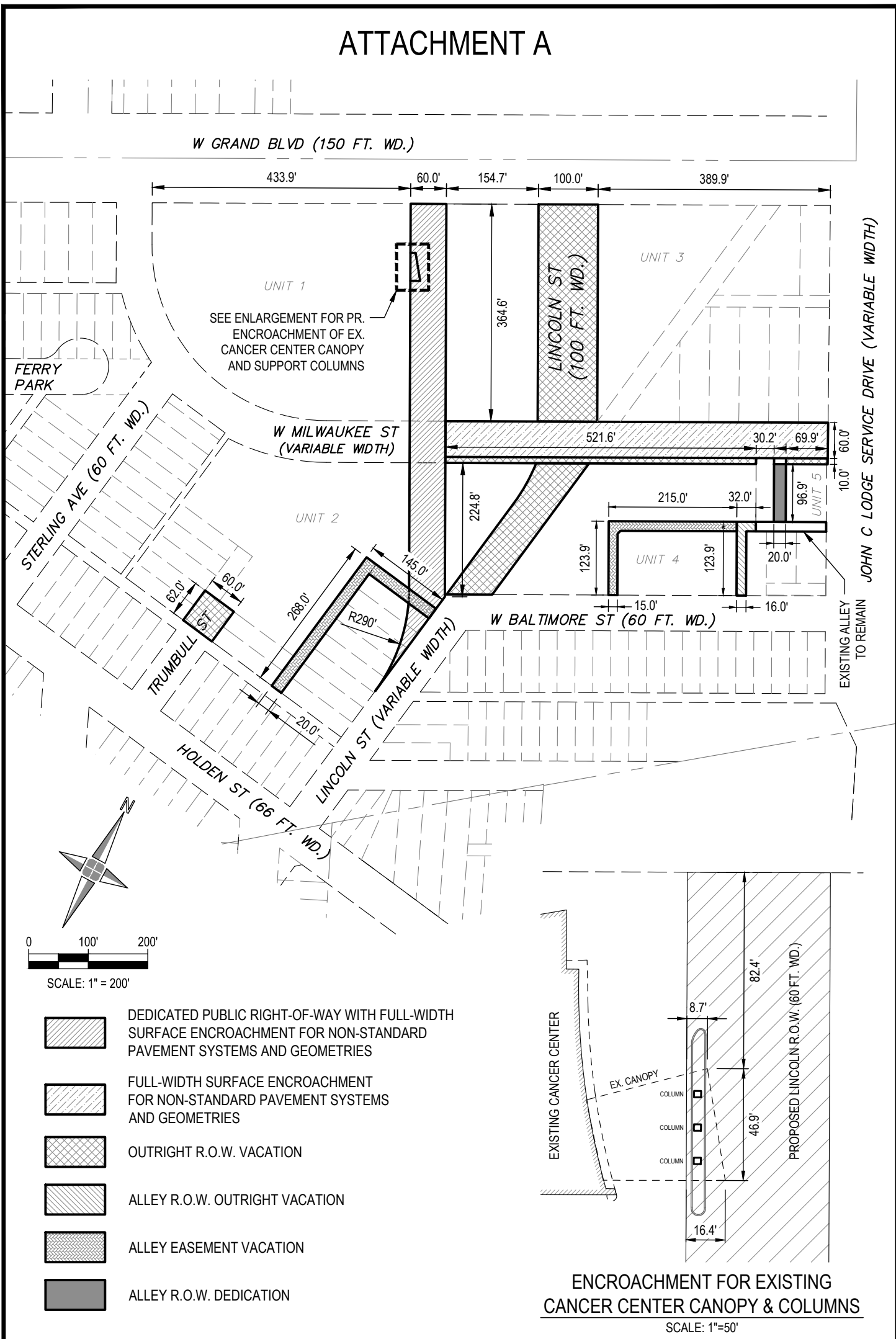


ATTACHMENT A



HENRY FORD HEALTH SOUTH CAMPUS ROW MODIFICATION

DESTINATION GRAND

CITY OF DETROIT, WAYNE COUNTY, MICHIGAN

R.O.W. MODIFICATION



28 West Adams Road
Suite 1200
Detroit, MI 48226
p (313) 962-4442
f (313) 962-5068
www.giffelswebster.com

Executive: MM
Manager: RJ
Designer: RJ
Quality Control: MM
Private Claim 36 & 246

Developed For:
HENRY FORD HEALTH
ONE FORD PLACE, SUITE 4A
DETROIT, MI 48202

DATE:	ISSUE:
2023-10-11	PETITION SUBMISSION
2023-11-17	REV-DPW COMMENTS

Date: 10.11.2023
Scale: 1"=200'
Sheet: 1 OF 1
Project: 20203.03D

Copyright © 2023 Giffels Webster.
No reproduction shall be made
without the prior written consent of
Giffels Webster.

V:\20203.03D Destination Grand Civil Master Plan\Design\CAD\Work Sheets\ROW Modification.dwg