



CITY OF DETROIT
DEPARTMENT OF PUBLIC WORKS
CITY ENGINEERING DIVISION

COLEMAN A. YOUNG MUNICIPAL CENTER
2 WOODWARD AVE. SUITE 601
DETROIT, MICHIGAN 48226
PHONE: (313) 224-3949 TTY: 711
WWW.DETROITMI.GOV

To: Clerk's Office
From: The Department of Public Works
City Engineering Division
MapsandRecordsBureau@DetroitMI.Gov
(313) 224-3970

Petitioner:
1000 Webward LLC
1040 Woodward AVE.1416
Detroit, MI, 48226

On behalf of the above-mentioned petitioner the Department of Public Works: City Engineering Division is submitting a petition request for the action below. The petitioner has received a project consultation from the Department of Public Works: City Engineering Division and has been advised the following:

Type of action recommended:

Petition for encroachment into Woodward Avenue, adjacent to the property commonly known as 1000 Woodward Avenue, for the purpose of installing a new blade sign and a new entrance sign.

Raven Wright
Supervisor of Maps and Records
Department of Public Works
City Engineering Division
313-224-3985



CITY OF DETROIT
DEPARTMENT OF PUBLIC WORKS
CITY ENGINEERING DIVISION

COLEMAN A. YOUNG MUNICIPAL CENTER
2 WOODWARD AVE. SUITE 601
DETROIT, MICHIGAN 48226
PHONE: (313) 224-3949 TTY: 711
WWW.DETROITMI.GOV

To whom it may concern,

We have received the following comments from the City of Detroit for the following Signs/SGN #'s.

- **SGN2024-00010** has been reviewed by BSEED; corrections of sign area (6 sq.ft. max.) is requested. Applicants sign area is about 20sf, much larger than allowed. Corrections been sent to tenant. They can request waiver through PDD at Detroitmi.gov/sign-waiver, but a public hearing is required.
- **SGN2024-00011** (projecting sign) has been reviewed by BSEED; corrections of sign area (12 sq.ft. max.) is requested, remaining reviewer to complete is DPW Encroachment Applicants sign is much larger than 12sf allowed. Corrections have been sent to applicant. DPW review required.

Per the comments we have submitted Right of Way Application ENG 24-212. Please review the Landlord approved sign drawings from Bedrock for Petition for Encroachment. These signs are located on the exterior of the OCM building following in compliance with existing neighboring business signage size of the OCM building.



Bedrock has assembled a team that has identified us in the business district apart of the draft in April and would like to be a part of this review process and expedite. Please include liviaowens@bedrockdetroit.com on all communication as she will share updates with presidential departments in Bedrock anticipating the completion of this project.

Our expectation would be to remain at the suggested sign from vendor listed in the drawings.

We look forward to your feedback.

Sincerely,

-Corina Quinones

313.244.8764



CITY OF DETROIT
DEPARTMENT OF PUBLIC WORKS
CITY ENGINEERING DIVISION

COLEMAN A. YOUNG MUNICIPAL CENTER
2 WOODWARD AVE. SUITE 601
DETROIT, MICHIGAN 48226
PHONE: (313) 224-3949 TTY: 711
WWW.DETROITMI.GOV

SIGN LOCATION MAP

1040 Woodward Ave

The Montroe Street Midway

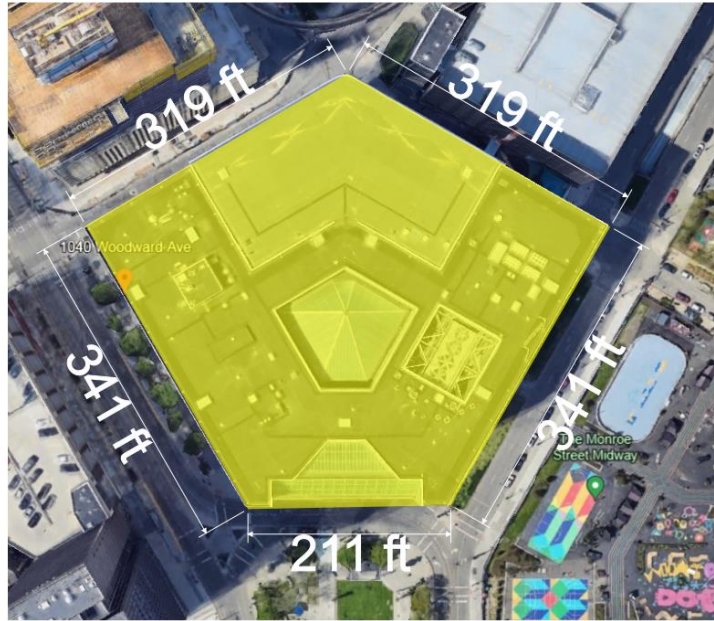
Customer Name	Job Name	Location	Job Specs
ADELINA	Side Vertical Outdoor Sign	1040 Woodward Detroit, MI 48226	Aluminum vertical cabinet with push thru letters



CITY OF DETROIT
DEPARTMENT OF PUBLIC WORKS
CITY ENGINEERING DIVISION

COLEMAN A. YOUNG MUNICIPAL CENTER
2 WOODWARD AVE. SUITE 601
DETROIT, MICHIGAN 48226
PHONE: (313) 224-3949 TTY: 711
WWW.DETROITMI.GOV

PLAN PAREL DIMENSIONS



Customer Name	Job Name	Location	Job Specs
ADELINA	Side Vertical Outdoor Sign	1040 Woodward Detroit, MI 48226	Aluminum vertical cabinet with push thru letters



CITY OF DETROIT
 DEPARTMENT OF PUBLIC WORKS
 CITY ENGINEERING DIVISION


COLEMAN A. YOUNG MUNICIPAL CENTER
 2 WOODWARD AVE. SUITE 601
 DETROIT, MICHIGAN 48226
 PHONE: (313) 224-3949 TTY: 711
 WWW.DETROITMI.GOV

SIGN SITE PLAN

Custom Suspended Cabinet
 with Push Thru Letters with
 Brackets supports

- Cabinet Material:
.125 Aluminum
- Cabinet dimension :
30"H x 110"W x 3"D
- Cabinet Color: Black Matte
- Faces: Acrylic
- Letters: 26"H



Customer Name	Job Name	Location	Job Specs
	Main Entrance Sign	1040 Woodward Detroit, MI 48226	Aluminum wall cabinet with push thru letters



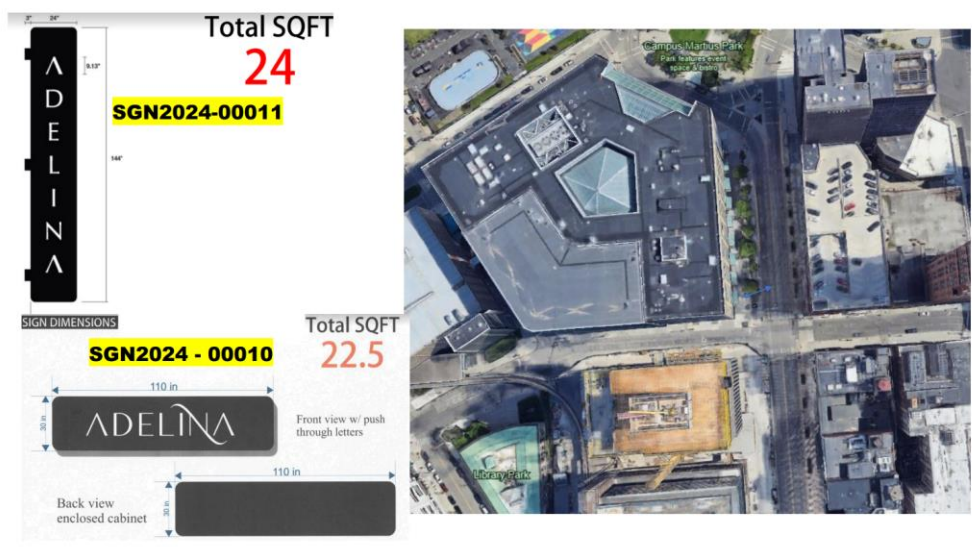
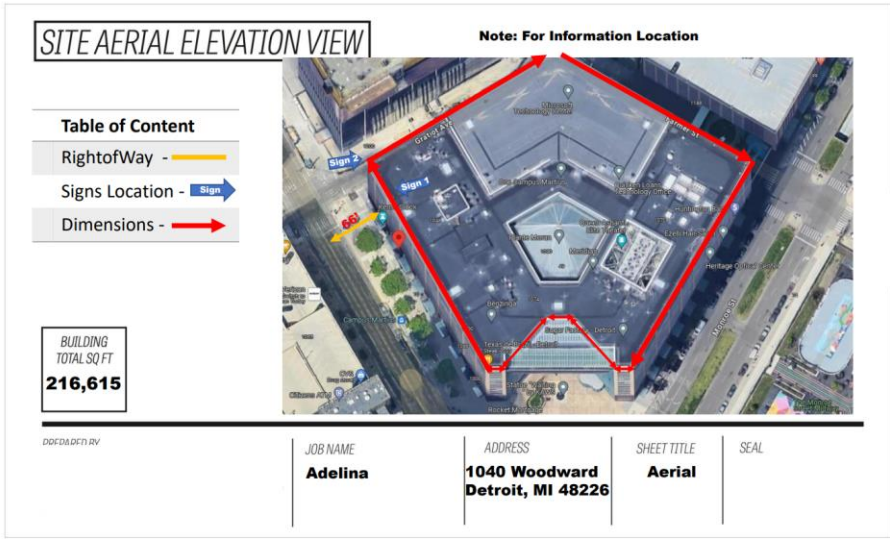
CITY OF DETROIT
DEPARTMENT OF PUBLIC WORKS
CITY ENGINEERING DIVISION

COLEMAN A. YOUNG MUNICIPAL CENTER
2 WOODWARD AVE. SUITE 601
DETROIT, MICHIGAN 48226
PHONE: (313) 224-3949 TTY: 711
WWW.DETROITMI.GOV

BUILDING PROJECTION SIGN



Customer Name	Job Name	Location	Job Specs
ADELINA	Side Vertical Outdoor Sign	1040 Woodward Detroit, MI 48226	Aluminum vertical cabinet with push thru letters



Existing Signage on the Premises





CITY OF DETROIT
DEPARTMENT OF PUBLIC WORKS
CITY ENGINEERING DIVISION

COLEMAN A. YOUNG MUNICIPAL CENTER
2 WOODWARD AVE. SUITE 601
DETROIT, MICHIGAN 48226
PHONE: (313) 224-3949 TTY: 711
WWW.DETROITMI.GOV



SITE AERIAL ELEVATION VIEW

Note: For Information Location

Table of Content

RightofWay -

Signs Location -

Dimensions -

BUILDING
TOTAL SQ FT
216,615



DDPDA/DFN RV

JOB NAME
Adelina

ADDRESS
**1040 Woodward
Detroit, MI 48226**

SHEET TITLE
Aerial

SEAL

Adelina Revised

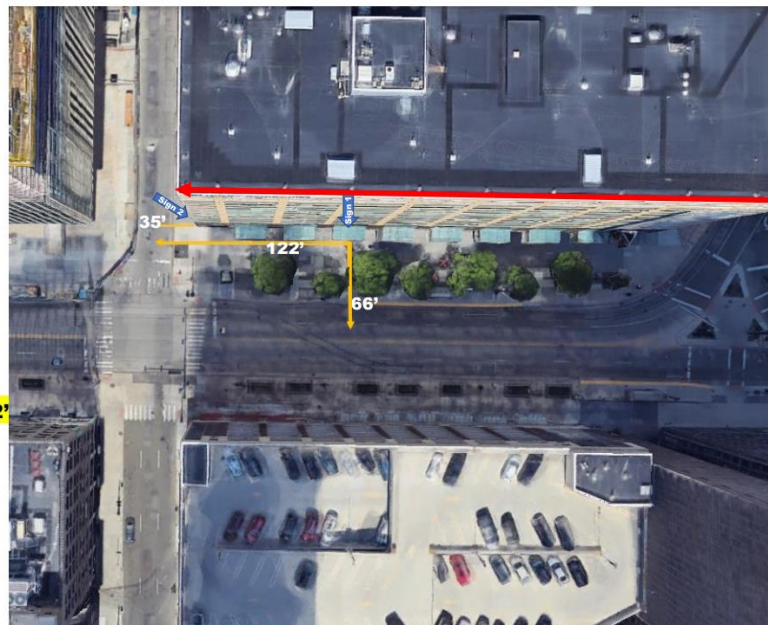
Table of Content

RightofWay Dimension -

Signs Location -

Building -

Note:
Sign 1 - Suspended Box Sign 122'
Sign 2 - Project Sign - 35'





CITY OF DETROIT
 DEPARTMENT OF PUBLIC WORKS
 CITY ENGINEERING DIVISION

COLEMAN A. YOUNG MUNICIPAL CENTER
 2 WOODWARD AVE. SUITE 601
 DETROIT, MICHIGAN 48226
 PHONE: (313) 224-3949 TTY: 711
 WWW.DETROITMI.GOV

SITE AERIAL ELEVATION VIEW

Note: For Information Location

Table of Content

RightofWay -

Signs Location -

Dimensions -

BUILDING
 TOTAL SQ FT
216,615



DDFDADFD RV

JOB NAME
Adelina

ADDRESS
**1040 Woodward
 Detroit, MI 48226**

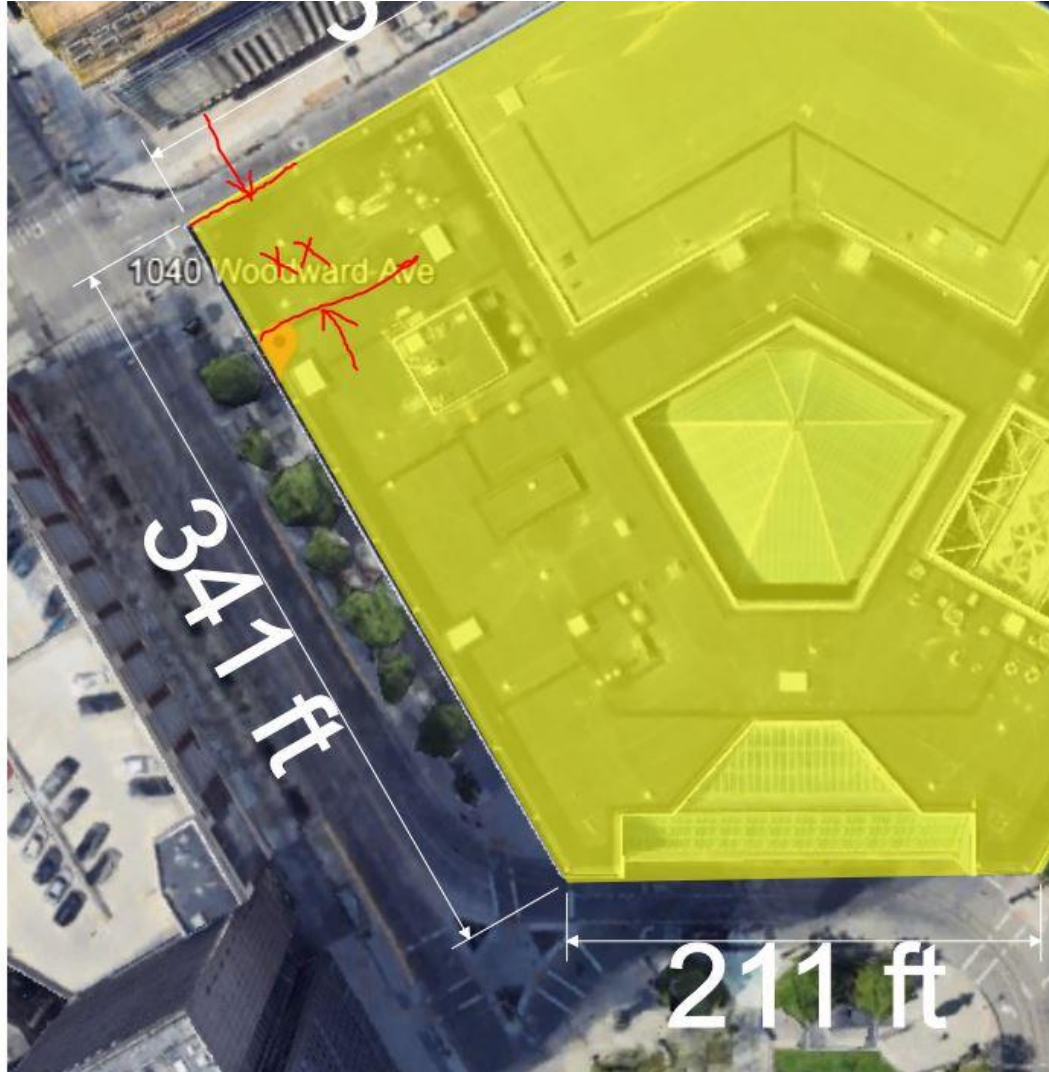
SHEET TITLE
Aerial

SEAL



CITY OF DETROIT
DEPARTMENT OF PUBLIC WORKS
CITY ENGINEERING DIVISION

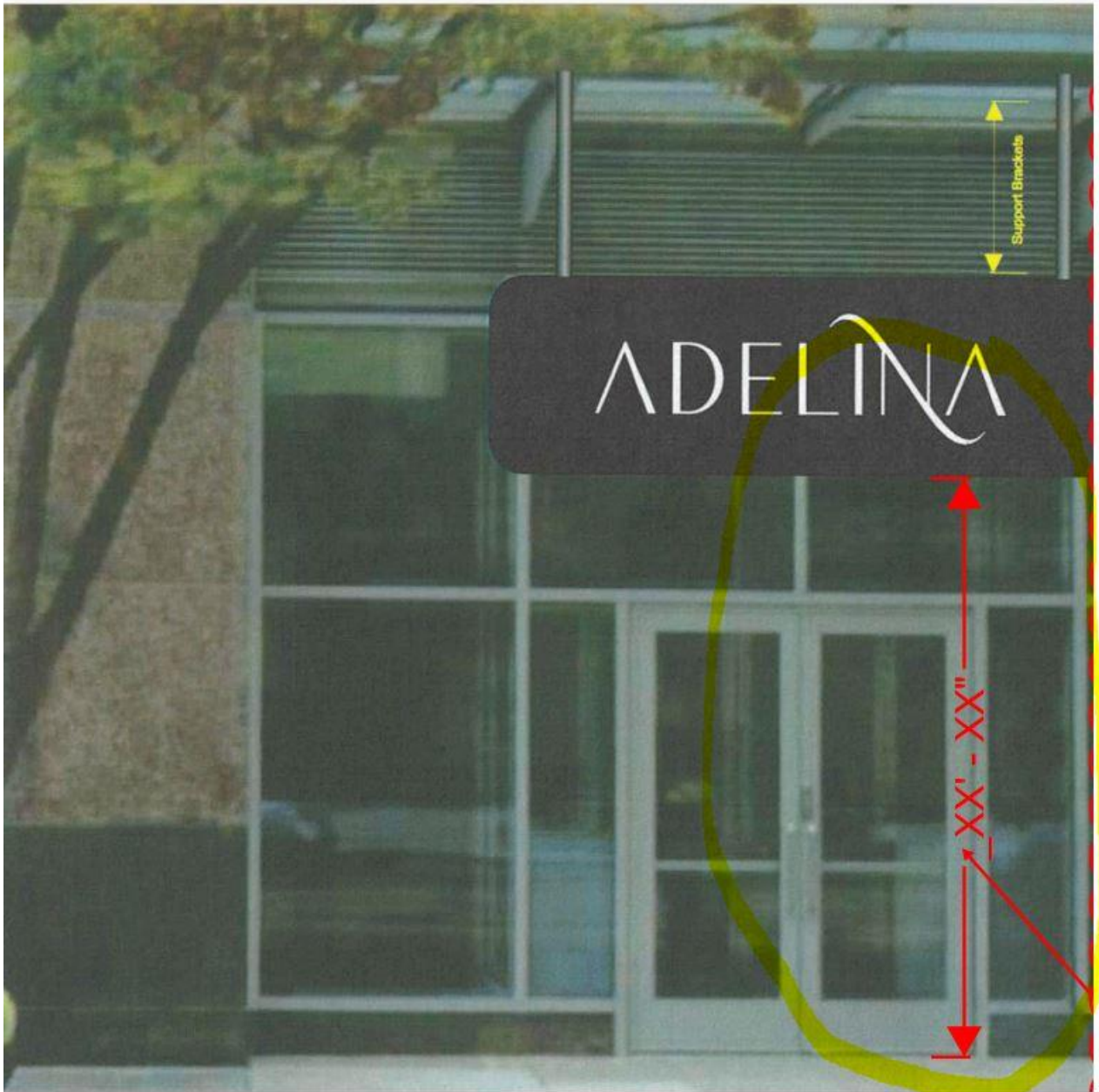
COLEMAN A. YOUNG MUNICIPAL CENTER
2 WOODWARD AVE. SUITE 601
DETROIT, MICHIGAN 48226
PHONE: (313) 224-3949 TTY: 711
WWW.DETROITMI.GOV





CITY OF DETROIT
DEPARTMENT OF PUBLIC WORKS
CITY ENGINEERING DIVISION

COLEMAN A. YOUNG MUNICIPAL CENTER
2 WOODWARD AVE. SUITE 601
DETROIT, MICHIGAN 48226
PHONE: (313) 224-3949 TTY: 711
WWW.DETROITMI.GOV





CITY OF DETROIT
 DEPARTMENT OF PUBLIC WORKS
 CITY ENGINEERING DIVISION

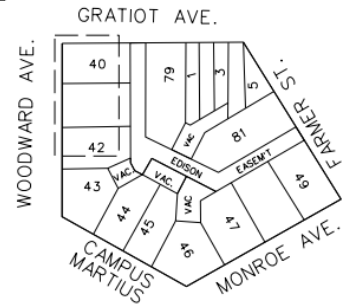
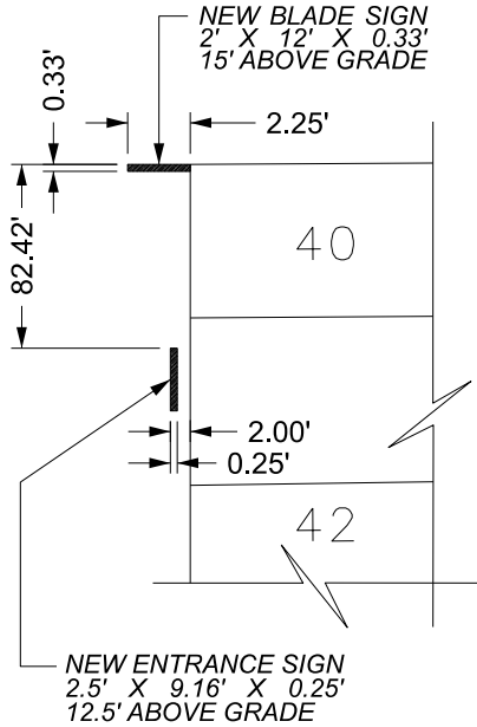
COLEMAN A. YOUNG MUNICIPAL CENTER
 2 WOODWARD AVE. SUITE 601
 DETROIT, MICHIGAN 48226
 PHONE: (313) 224-3949 TTY: 711
 WWW.DETROITMI.GOV

MAP-24-28



GRATIOT AVE. 60 FT. WD.

WOODWARD AVE. 120 FT. WD.



- REQUEST ENCROACHMENT

(FOR OFFICE USE ONLY)

CARTO 28 A

B					
	A				
DESCRIPTION		DRWN	CHEK	APPD	DATE
REVISIONS					
DRAWN BY	AP	CHECKED	LC		
DATE	04-03-2024	APPROVED	RW		

REQUEST ENCROACHMENT
 INTO WOODWARD
 AT 1040 WOODWARD AVE.

CITY OF DETROIT
 CITY ENGINEERING DIVISION
 SURVEY BUREAU
 JOB NO. 24-28
 DRWG. NO.