

City of Detroit

Janice M. Winfrey
City Clerk

OFFICE OF THE CITY CLERK

Andre P. Gilbert II
Deputy City Clerk

DEPARTMENT PETITION REFERENCE COMMUNICATION

To: The Department or Commission Listed Below

From: Janice M Winfrey, Detroit City Clerk

The following petition is herewith referred to you for report and recommendation to the City Council.

In accordance with that body's directive, kindly return the same with your report in duplicate within four (4) weeks.

Petition No.	2024-156
Name of Petitioner	1000 Webward LLC
Description of Petition	Please see request for petition for encroachment into Woodward Avenue, adjacent to the property commonly known as 1000 Woodward Avenue, for the purpose of installing a new blade sign and a new entrance sign.
Type of Petition	Alley Vacation/ Encroachment/ Utility Vacation
Submission Date	5/17/2024
Concerned Departments	Department of Public Works, Planning and Development Department, City Engineering Division
Petitioner Contact	1000 Webward LLC 1040 Woodward AVE. 1416 Detroit, MI 48226



**CITY OF DETROIT
DEPARTMENT OF PUBLIC WORKS
CITY ENGINEERING DIVISION**

**COLEMAN A. YOUNG MUNICIPAL CENTER
2 WOODWARD AVE. SUITE 601
DETROIT, MICHIGAN 48226
PHONE: (313) 224-3949 TTY: 711
WWW.DETROITMI.GOV**

To: Clerk's Office
From: The Department of Public Works
City Engineering Division
MapsandRecordsBureau@DetroitMI.Gov
(313) 224-3970

Petitioner:
1000 Webward LLC
1040 Woodward AVE.1416
Detroit, MI, 48226

On behalf of the above-mentioned petitioner the Department of Public Works: City Engineering Division is submitting a petition request for the action below. The petitioner has received a project consultation from the Department of Public Works: City Engineering Division and has been advised the following:

Type of action recommended:

Petition for encroachment into Woodward Avenue, adjacent to the property commonly known as 1000 Woodward Avenue, for the purpose of installing a new blade sign and a new entrance sign.

Raven Wright
Supervisor of Maps and Records
Department of Public Works
City Engineering Division
313-224-3985



CITY OF DETROIT
DEPARTMENT OF PUBLIC WORKS
CITY ENGINEERING DIVISION

COLEMAN A. YOUNG MUNICIPAL CENTER
2 WOODWARD AVE. SUITE 601
DETROIT, MICHIGAN 48226
PHONE: (313) 224-3949 TTY: 711
WWW.DETROITMI.GOV

To whom it may concern,

We have received the following comments from the City of Detroit for the following Signs/SGN #'s.

- **SGN2024-00010** has been reviewed by BSEED; corrections of sign area (6 sq.ft. max.) is requested. Applicants sign area is about 20sf, much larger than allowed. Corrections been sent to tenant. They can request waiver through PDD at Detroitmi.gov/sign waiver, but a public hearing is required.
- **SGN2024-00011** (projecting sign) has been reviewed by BSEED; corrections of sign area (12 sq.ft. max.) is requested, remaining reviewer to complete is DPW Encroachment Applicants sign is much larger than 12sf allowed. Corrections have been sent to applicant. DPW review required.

Per the comments we have submitted Right of Way Application ENG 24-212. Please review the Landlord approved sign drawings from Bedrock for Petition for Encroachment. These signs are located on the exterior of the OCM building following in compliance with existing neighboring business signage size of the OCM building.



Bedrock has assembled a team that has identified us in the business district apart of the draft in April and would like to be a part of this review process and expedite. Please include liviaowens@bedrockdetroit.com on all communication as she will share updates with presidential departments in Bedrock anticipating the completion of this project.

Our expectation would be to remain at the suggested sign from vendor listed in the drawings.

We look forward to your feedback.

Sincerely,


-Corina Quinones

313.244.8764



CITY OF DETROIT
DEPARTMENT OF PUBLIC WORKS
CITY ENGINEERING DIVISION

COLEMAN A. YOUNG MUNICIPAL CENTER
2 WOODWARD AVE. SUITE 601
DETROIT, MICHIGAN 48226
PHONE: (313) 224-3949 TTY: 711
WWW.DETROITMI.GOV

SIGN LOCATION MAP			
			
Customer Name	Job Name	Location	Job Specs
ADELINA	Side Vertical Outdoor Sign	1040 Woodward Detroit, MI 48226	Aluminum vertical cabinet with push thru letters



CITY OF DETROIT
DEPARTMENT OF PUBLIC WORKS
CITY ENGINEERING DIVISION

COLEMAN A. YOUNG MUNICIPAL CENTER
2 WOODWARD AVE. SUITE 601
DETROIT, MICHIGAN 48226
PHONE: (313) 224-3949 TTY: 711
WWW.DETROITMI.GOV

PLAN PAREL DIMENSIONS



Customer Name	Job Name	Location	Job Specs
ADELINA	Side Vertical Outdoor Sign	1040 Woodward Detroit, MI 48226	Aluminum vertical cabinet with push thru letters



CITY OF DETROIT
DEPARTMENT OF PUBLIC WORKS
CITY ENGINEERING DIVISION

COLEMAN A. YOUNG MUNICIPAL CENTER
2 WOODWARD AVE. SUITE 601
DETROIT, MICHIGAN 48226
PHONE: (313) 224-3949 TTY: 711
WWW.DETROITMI.GOV

SIGN SITE PLAN

Custom Suspended Cabinet with Push Thru Letters with Brackets supports

- Cabinet Material: .125 Aluminum
- Cabinet dimension : 30"H x 110"W x 3"D
- Cabinet Color: Black Matte
- Faces: Acrylic
- Letters: 26"H



Customer Name	Job Name	Location	Job Specs
ADELINA	Main Entrance Sign	1040 Woodward Detroit, MI 48226	Aluminum wall cabinet with push thru letters



CITY OF DETROIT
DEPARTMENT OF PUBLIC WORKS
CITY ENGINEERING DIVISION

COLEMAN A. YOUNG MUNICIPAL CENTER
2 WOODWARD AVE. SUITE 601
DETROIT, MICHIGAN 48226
PHONE: (313) 224-3949 TTY: 711
WWW.DETROITMI.GOV

BUILDING PROJECTION SIGN



Customer Name	Job Name	Location	Job Specs
ADELINA	Side Vertical Outdoor Sign	1040 Woodward Detroit, MI 48226	Aluminum vertical cabinet with push thru letters



CITY OF DETROIT
DEPARTMENT OF PUBLIC WORKS
CITY ENGINEERING DIVISION

COLEMAN A. YOUNG MUNICIPAL CENTER
2 WOODWARD AVE. SUITE 601
DETROIT, MICHIGAN 48226
PHONE: (313) 224-3949 TTY: 711
WWW.DETROITMI.GOV

SITE AERIAL ELEVATION VIEW

Note: For Information Location

Table of Content

- RightofWay -
- Signs Location -
- Dimensions -

BUILDING
 TOTAL SQ FT
216,615



DATE: 05/20/24

JOB NAME	ADDRESS	SHEET TITLE	SEAL
Adelina	1040 Woodward Detroit, MI 48226	Aerial	

Total SQFT
24
SGN2024-00011

ADELINA

SGN2024 - 00010

Total SQFT
22.5

110 in

110 in

Back view enclosed cabinet

Front view w push through lenses



Existing Signage on the Premises





SITE AERIAL ELEVATION VIEW

Note: For Information Location

Table of Content

- RightofWay -
- Signs Location -
- Dimensions -

BUILDING
TOTAL SQ FT
216,615



DESIGNED BY

JOB NAME

Adelina

ADDRESS

**1040 Woodward
Detroit, MI 48226**

SHEET TITLE

Aerial

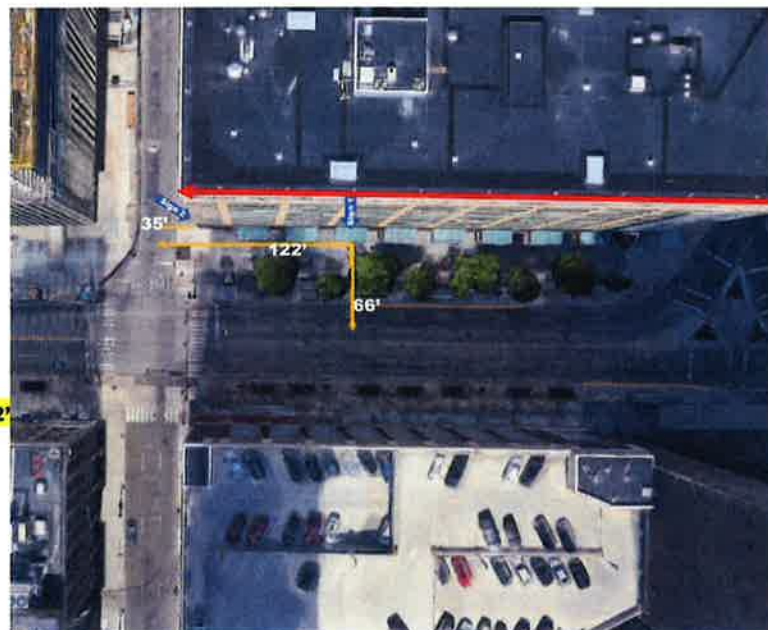
SEAL

Adelina Revised

Table of Content

- RightofWay Dimension -
- Signs Location -
- Building -

Note:
Sign 1 - Suspended Box Sign 122'
Sign 2 - Project Sign - 35'





CITY OF DETROIT
DEPARTMENT OF PUBLIC WORKS
CITY ENGINEERING DIVISION

COLEMAN A. YOUNG MUNICIPAL CENTER
2 WOODWARD AVE. SUITE 601
DETROIT, MICHIGAN 48226
PHONE: (313) 224-3949 TTY: 711
WWW.DETROITMI.GOV

SITE AERIAL ELEVATION VIEW

Note: For Information Location

Table of Content

RightofWay - 

Signs Location - 

Dimensions - 

BUILDING
TOTAL SQ. FT
216,615



DATE: 08/01/2017

JOB NAME

Adelina

ADDRESS

**1040 Woodward
Detroit, MI 48226**

SHEET TITLE

Aerial

SEAL



CITY OF DETROIT
DEPARTMENT OF PUBLIC WORKS
CITY ENGINEERING DIVISION

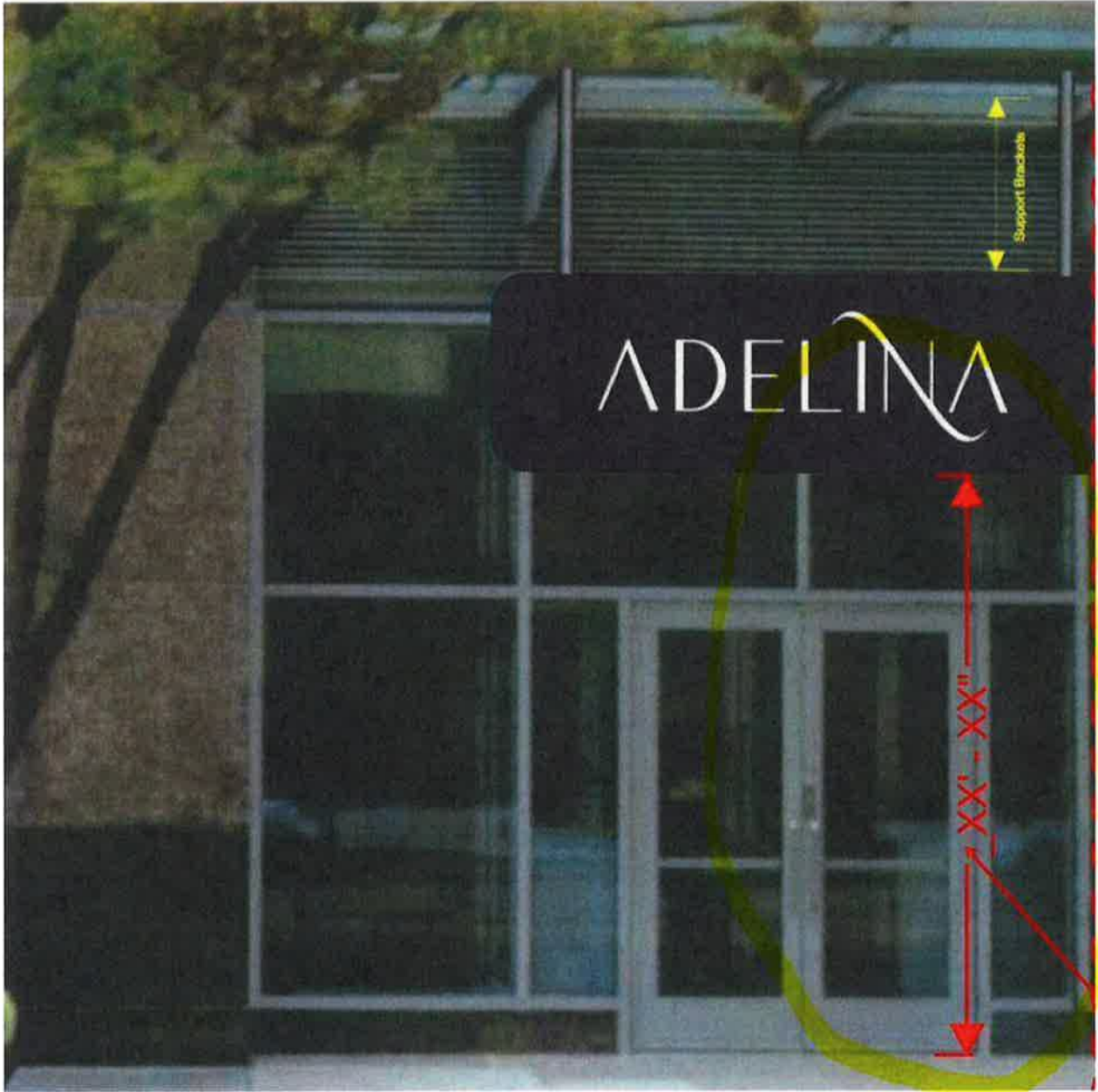
COLEMAN A. YOUNG MUNICIPAL CENTER
2 WOODWARD AVE. SUITE 601
DETROIT, MICHIGAN 48226
PHONE: (313) 224-3949 TTY: 711
WWW.DETROITMI.GOV





CITY OF DETROIT
DEPARTMENT OF PUBLIC WORKS
CITY ENGINEERING DIVISION

COLEMAN A. YOUNG MUNICIPAL CENTER
2 WOODWARD AVE. SUITE 601
DETROIT, MICHIGAN 48226
PHONE: (313) 224-3949 TTY: 711
WWW.DETROITMI.GOV





CITY OF DETROIT
DEPARTMENT OF PUBLIC WORKS
CITY ENGINEERING DIVISION

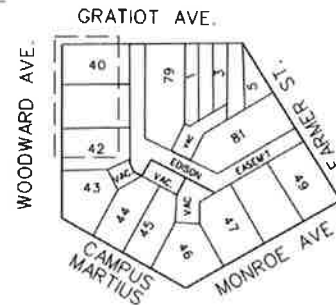
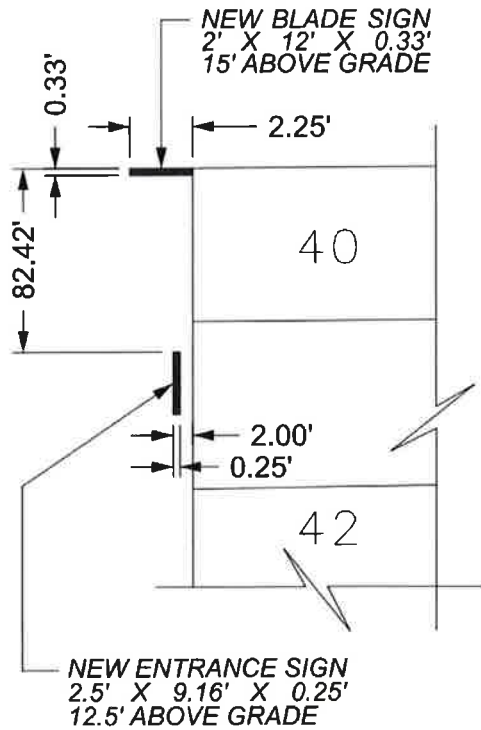
COLEMAN A. YOUNG MUNICIPAL CENTER
2 WOODWARD AVE. SUITE 601
DETROIT, MICHIGAN 48226
PHONE: (313) 224-3949 TTY: 711
WWW.DETROITMI.GOV

MAP-24-28



GRATIOT AVE. 60 FT. WD.

WOODWARD AVE. 120 FT. WD.



■ - REQUEST ENCROACHMENT

(FOR OFFICE USE ONLY)

CARTO 28 A

B					
A					
DESCRIPTION					
	DESN	CHKD	APPD	DATE	
REVISIONS					
DRAWN BY	AP	CHECKED	LC		
DATE	04-03-2024	APPROVED	RW		

REQUEST ENCROACHMENT
INTO WOODWARD
AT 1040 WOODWARD AVE.

CITY OF DETROIT
CITY ENGINEERING DIVISION
SURVEY BUREAU

JOB NO. 24-28

DRWG. NO.