



CITY OF DETROIT  
DEPARTMENT OF PUBLIC WORKS  
CITY ENGINEERING DIVISION

COLEMAN A. YOUNG MUNICIPAL CENTER  
2 WOODWARD AVE. SUITE 601  
DETROIT, MICHIGAN 48226  
PHONE: (313) 224-3949 TTY: 711  
WWW.DETROITMI.GOV

---

To: Clerk's Office  
From: The Department of Public Works  
City Engineering Division  
MapsandRecordsBureau@DetroitMI.Gov  
(313) 224-3970

Petitioner:  
Madison Theatre Building LLC  
20 Witherell St.  
Detroit, MI, 48226

On behalf of the above-mentioned petitioner the Department of Public Works: City Engineering Division is submitting a petition request for the action below. The petitioner has received a project consultation from the Department of Public Works: City Engineering Division and has been advised the following:

Type of action recommended:

Petition for encroachment into Broadway Avenue, adjacent to the property commonly known as 20 Witherell St., for the purpose of installing an on-site advertising sign.

Raven Wright  
Supervisor of Maps & Records  
Department of Public Works  
City Engineering Division  
313-224-3985



**CITY OF DETROIT**  
**DEPARTMENT OF PUBLIC WORKS**  
**CITY ENGINEERING DIVISION**

**COLEMAN A. YOUNG MUNICIPAL CENTER**  
**2 WOODWARD AVE. SUITE 601**  
**DETROIT, MICHIGAN 48226**  
**PHONE: (313) 224-3949 TTY: 711**  
**[WWW.DETROITMI.GOV](http://WWW.DETROITMI.GOV)**

---



CITY OF DETROIT  
DEPARTMENT OF PUBLIC WORKS  
CITY ENGINEERING DIVISION

COLEMAN A. YOUNG MUNICIPAL CENTER  
2 WOODWARD AVE. SUITE 601  
DETROIT, MICHIGAN 48226  
PHONE: (313) 224-3949 TTY: 711  
WWW.DETROITMI.GOV

**phillips SIGN & LIGHTING INC.**

40920 Executive Drive, Harrison Township, MI 48045  
Phone: 586.468.7110 Fax: 586.468.7441 [www.phillipssign.com](http://www.phillipssign.com)

April 15, 2024

City of Detroit  
City Engineering Division  
2 Woodward Ave, Suite 642  
Detroit, MI 48226

RE: Buddy's Pizzeria  
1565 Broadway Street  
ENG-23-1652

To Whom It May Concern:

By means of this letter and application, we are requesting permission to obtain an encroachment permit for the Buddy's Pizzeria stick out sign that was installed by others in 2018.

Phillips Sign & Lighting removed the stick out sign to make some necessary repairs and are ready to reinstall the sign. We were made aware last week that an encroachment permit has not been pulled.

We are requesting permission to reinstall the stick out sign "At Risk" while the encroachment permit is processed.

Please let us know if you need anything else to process our application.

We greatly appreciate your time and consideration in this matter.

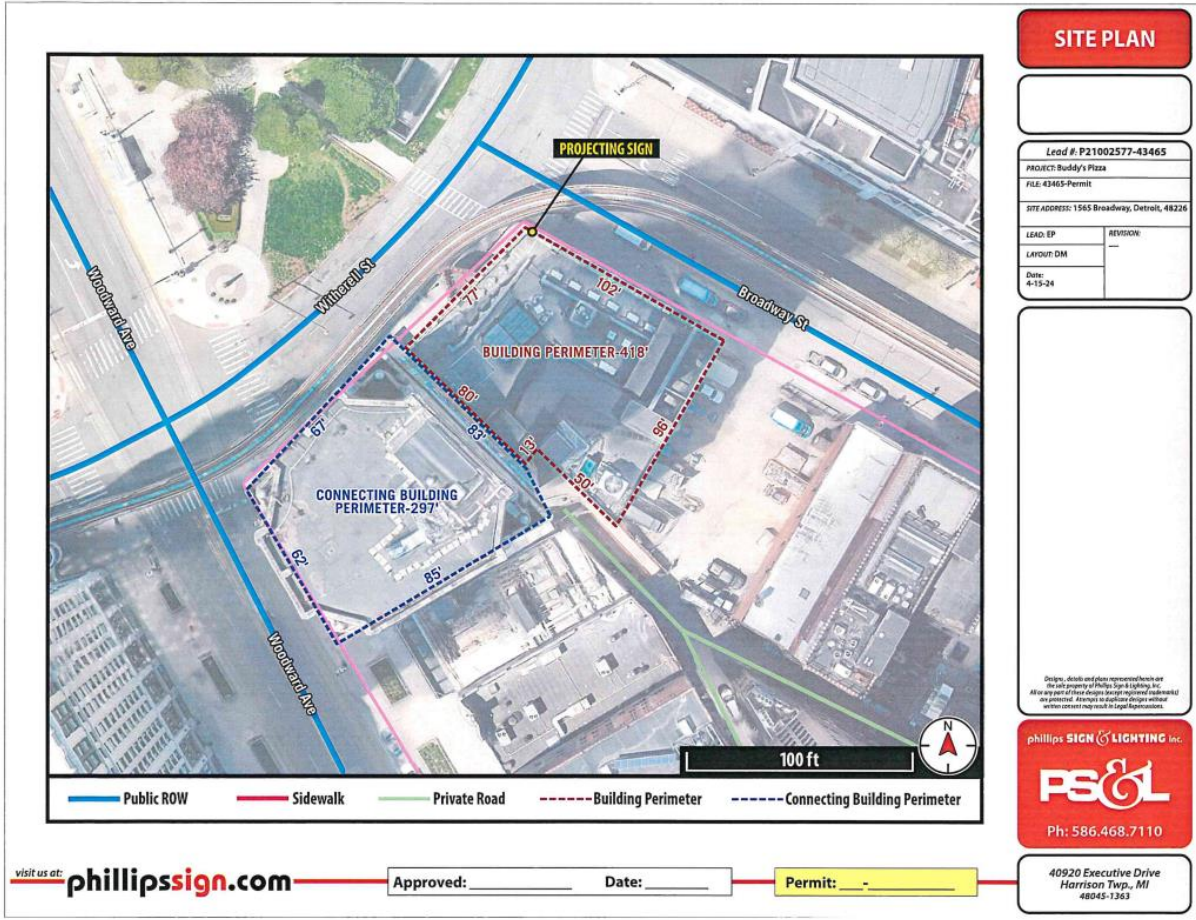
Sincerely

Ed Phillips  
Phillips Sign & Lighting  
40920 Executive Drive  
Harrison Township, MI 48045



CITY OF DETROIT  
DEPARTMENT OF PUBLIC WORKS  
CITY ENGINEERING DIVISION

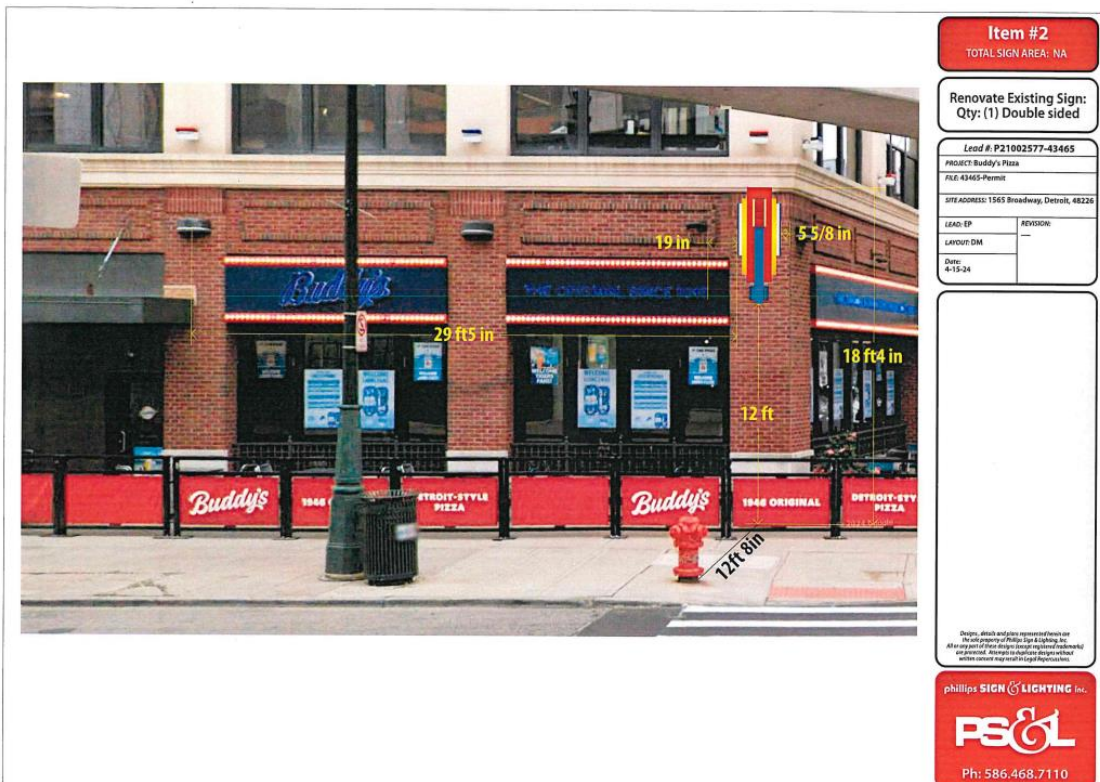
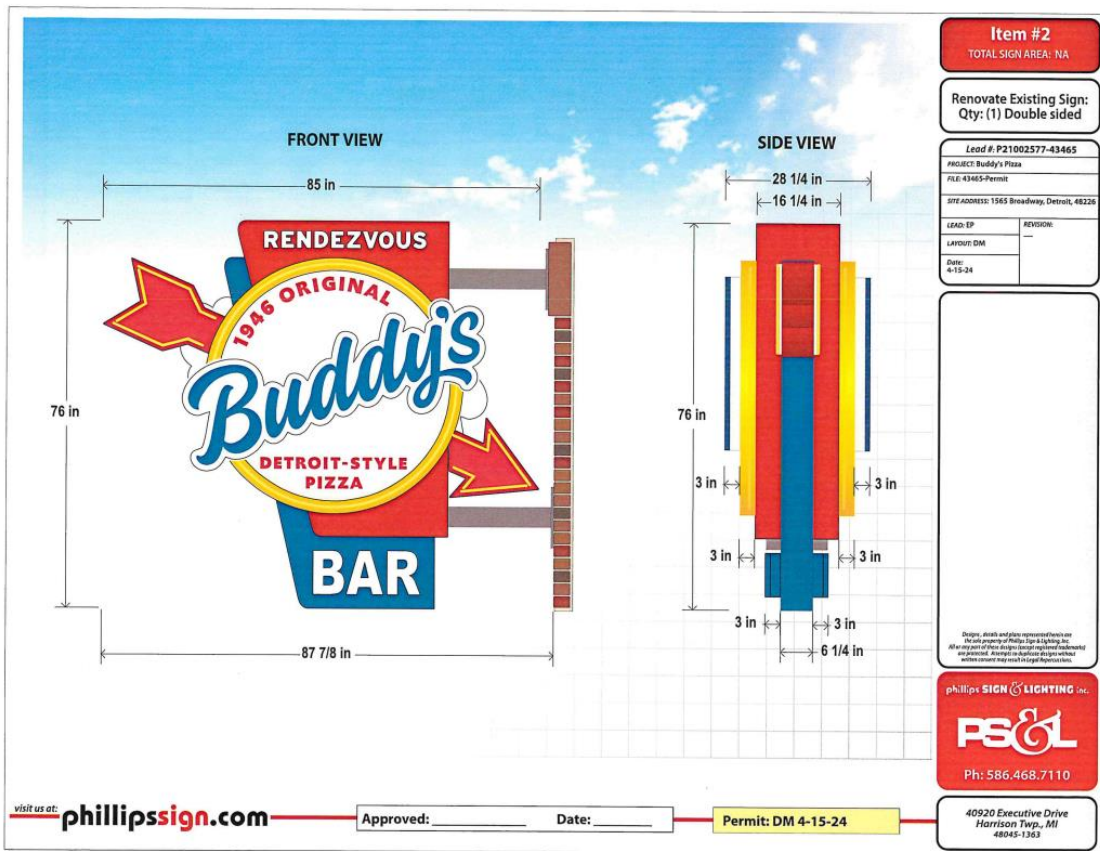
COLEMAN A. YOUNG MUNICIPAL CENTER  
2 WOODWARD AVE. SUITE 601  
DETROIT, MICHIGAN 48226  
PHONE: (313) 224-3949 TTY: 711  
WWW.DETROITMI.GOV





CITY OF DETROIT  
DEPARTMENT OF PUBLIC WORKS  
CITY ENGINEERING DIVISION

COLEMAN A. YOUNG MUNICIPAL CENTER  
2 WOODWARD AVE. SUITE 601  
DETROIT, MICHIGAN 48226  
PHONE: (313) 224-3949 TTY: 711  
WWW.DETROITMI.GOV





**CITY OF DETROIT**  
**DEPARTMENT OF PUBLIC WORKS**  
**CITY ENGINEERING DIVISION**

**COLEMAN A. YOUNG MUNICIPAL CENTER**  
**2 WOODWARD AVE. SUITE 601**  
**DETROIT, MICHIGAN 48226**  
**PHONE: (313) 224-3949 TTY: 711**  
**[WWW.DETROITMI.GOV](http://WWW.DETROITMI.GOV)**

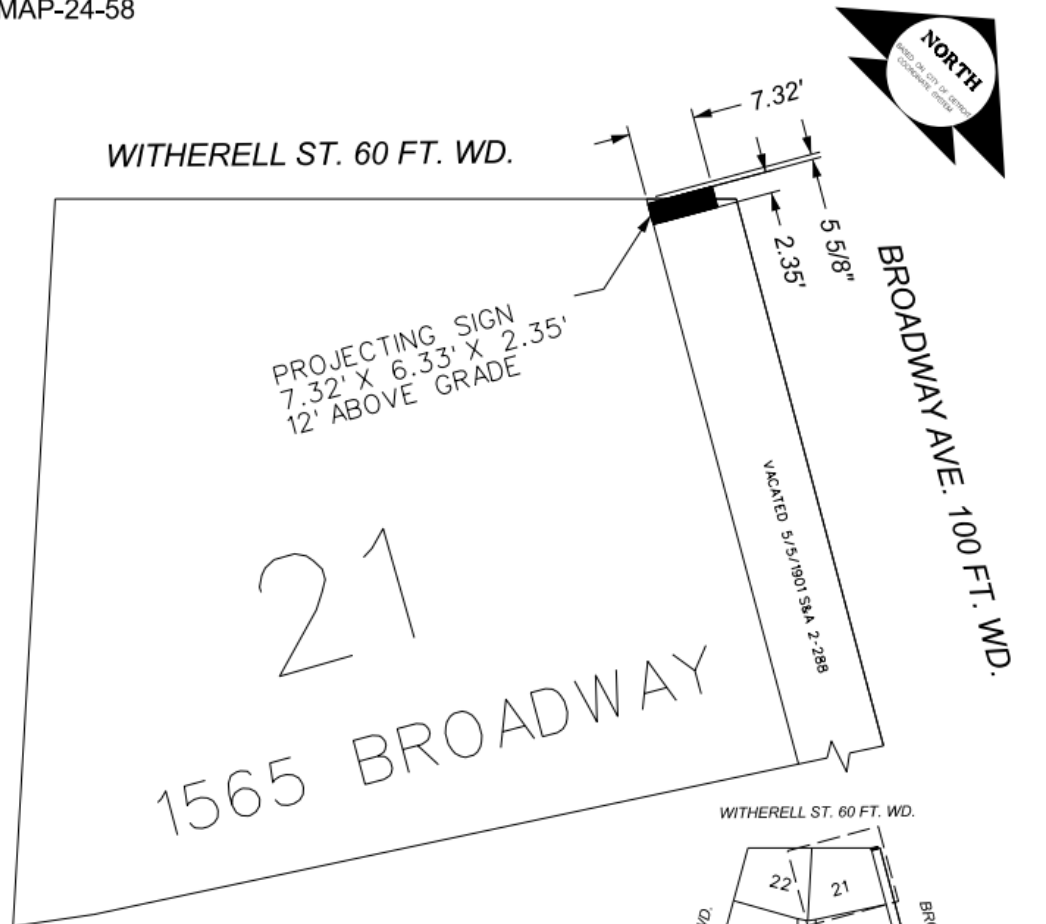
---



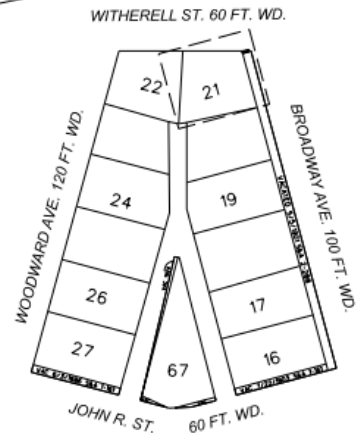
CITY OF DETROIT  
 DEPARTMENT OF PUBLIC WORKS  
 CITY ENGINEERING DIVISION

COLEMAN A. YOUNG MUNICIPAL CENTER  
 2 WOODWARD AVE. SUITE 601  
 DETROIT, MICHIGAN 48226  
 PHONE: (313) 224-3949 TTY: 711  
 WWW.DETROITMI.GOV

MAP-24-58



21  
 1565 BROADWAY



- REQUEST ENCROACHMENT  
 (For Above Grade Projecting Sign)

(FOR OFFICE USE ONLY)

CARTO 28 A

<b>B</b>				
<b>A</b>				
<b>DESCRIPTION</b>		<b>REV#</b>	<b>CHKD</b>	<b>APPD</b>   <b>DATE</b>
<b>REVISIONS</b>				
<b>DRAWN BY</b>	LC	<b>CHECKED</b>		AP
<b>DATE</b>	04-16-2024	<b>APPROVED</b>		RW

REQUEST ENCROACHMENT  
 INTO BROADWAY ST.  
 AT 1565 BROADWAY ST.  
 BETWEEN WITHERELL ST.  
 AND JOHN R ST.

**CITY OF DETROIT**  
**CITY ENGINEERING DIVISION**  
 SURVEY BUREAU  
 JOB NO. 24-58  
 DRWG. NO.