

# City of Detroit

Janice M. Winfrey  
City Clerk

OFFICE OF THE CITY CLERK

Andre P. Gilbert II  
Deputy City Clerk

## DEPARTMENT PETITION REFERENCE COMMUNICATION

*To: The Department or Commission Listed Below*

*From: Janice M Winfrey, Detroit City Clerk*

---

The following petition is herewith referred to you for report and recommendation to the City Council.

In accordance with that body's directive, kindly return the same with your report in duplicate within four (4) weeks.

---

Petition No.	2024-139
Name of Petitioner	The Department of Public Works
Description of Petition	Please see request of proposed project which includes the activation of an existing alleyway for the creation of shared public spaces to celebrate neighborhoods and promote the installation of art. (Burrell Trail)
Type of Petition	<b>Alley Vacation/ Encroachment/ Utility Vacation</b>
Submission Date	5/2/2024
Concerned Departments	Media Services, Buildings & Safety Engineering, Police Department, Fire Department, Municipal Parking Department, Transportation Department, Health Department; General Services Department,
Petitioner Contact	The Department of Public Works 313-224-3970



**CITY OF DETROIT  
DEPARTMENT OF PUBLIC WORKS  
CITY ENGINEERING DIVISION**

**COLEMAN A. YOUNG MUNICIPAL CENTER  
2 WOODWARD AVE. SUITE 601  
DETROIT, MICHIGAN 48226  
PHONE: (313) 224-3949 TTY: 711  
WWW.DETROITMI.GOV**

---

To: Clerk's Office  
From: The Department of Public Works  
City Engineering Division  
MapsandRecordsBureau@DetroitMI.Gov  
(313) 224-3970

Petitioner:  
Buildings, Safety Engineering, and Environmental Department  
2 Woodward Ave, Suite 601  
Detroit, MI 48226

On behalf of the above-mentioned petitioner the Department of Public Works: City Engineering Division is submitting a petition request for the action below. The petitioner has received a project consultation from the Department of Public Works: City Engineering Division and has been advised the following:

Type of action recommended:

The proposed project

includes the activation of an existing alleyway for the creation of shared public spaces to celebrate neighborhoods and promote the installation of art. The improvements noted within this submittal include the infrastructure elements to renew the alleys; making them accessible and safe for pedestrians.

The scope of work necessary for this project will include the following:

- Alley vegetation clearing and disposal of debris
- drainage improvements with the installation of new catch basins and adjusting existing manholes to grade.
- removal and replacement of alley pavements with concrete.
- installation of a public gathering space on adjacent property owned by the Alkebu-lan Village.
- Installation of solar powered lighting.
- Installation of a water service

Raven Wright  
Supervisor of Maps and Records  
Department of Public Works  
City Engineering Division  
313-224-3985



**CITY OF DETROIT**  
**DEPARTMENT OF PUBLIC WORKS**  
**CITY ENGINEERING DIVISION**

**COLEMAN A. YOUNG MUNICIPAL CENTER**  
**2 WOODWARD AVE. SUITE 601**  
**DETROIT, MICHIGAN 48226**  
**PHONE: (313) 224-3949 TTY: 711**  
**WWW.DETROITMI.GOV**



February 20, 2024

Buildings, Safety Engineering, and Environmental Department  
2 Woodward Ave, Suite 601  
Detroit, MI 48226

Re: E-Plans Review for the Arts Alleys Project  
Burrell Trail Arts Alley

On behalf of the City of Detroit's Office of Art, Culture, and Entrepreneurship (ACE), OHM Advisors is submitting construction plans for review and approval by the various City Departments. The proposed project includes the activation of an existing alleyway for the creation of shared public spaces to celebrate neighborhoods and promote the installation of art. The improvements noted within this submittal include the infrastructure elements to renew the alleys; making them accessible and safe for pedestrians.

The scope of work necessary for this project will include the following:

- Alley vegetation clearing and disposal of debris
- drainage improvements with the installation of new catch basins and adjusting existing manholes to grade.
- removal and replacement of alley pavements with concrete.
- installation of a public gathering space on adjacent property owned by the Alkebu-lan Village.
- Installation of solar powered lighting.
- Installation of a water service

## Alley Use

As part of this project, the existing public alley parallel to Harper Avenue between Townsend and Baldwin will be improved. This will include new concrete pavement protected on each end with removable bollards which will protect the space for pedestrian use as intended. The edges of this new space will include movable benches. The alley will be marked with the installation of decorative ACE Arts Alley signage.

The existing north-south alley extending northward will remain in its current state which is an unpaved turf grass alley with an existing woodchip pathway.

Based on the proposed improvements, ACE will be submitting encroachment petitions denoting the above noted non-typical items within the east-west alley. The encroachment petition will also include written consent from property owners adjoining the alleyways. In addition, a separate standard DPW maintenance agreement will be provided documenting the improvements.

## Adjacent Improvements

The plans depict improvements on a number of adjacent properties. Specifically, there will be fencing improvements to better define the alleyway. In addition, the space along Harper south of the alleyway will have a pathway, signage, plantings and a concrete plaza space created.

**OHM Advisors**  
1145 GRISWOLD STREET, SUITE 200  
DETROIT, MICHIGAN 48226

T 313 481 1250

OHM-Advisors.com



**CITY OF DETROIT**  
**DEPARTMENT OF PUBLIC WORKS**  
**CITY ENGINEERING DIVISION**

**COLEMAN A. YOUNG MUNICIPAL CENTER**  
**2 WOODWARD AVE. SUITE 601**  
**DETROIT, MICHIGAN 48226**  
**PHONE: (313) 224-3949 TTY: 711**  
**WWW.DETROITMI.GOV**

Burrell Trail Arts Alley: E-Plans Submission Cover Letter  
February 20, 2024  
Page 2 of 2

## Prior Development Team Meeting

This submission is a continuation of the process initiated last year that culminated in a Preliminary Plan Review meeting, held on November 20, 2023. The plans include the following change from this initial plan set:

1. A continuous concrete surface is now provided for the east-west alley. The greenspace has been removed per direction received from DWSD.

## Questions and Review

The Arts Alley Projects are funded as part of the City of Detroit's ARPA Allotment which requires that the improvements are obligated no later than December 31, 2024. ACE appreciates any assistance in expediting reviews. If there are any questions, please contact me with any questions at 313-481-1253 or via e-mail at [Zachary.hampton@ohm-advisors.com](mailto:Zachary.hampton@ohm-advisors.com).

Sincerely,  
OHM Advisors

Zachary Hampton, P.E.  
Project Manager

cc: File



**CITY OF DETROIT  
DEPARTMENT OF PUBLIC WORKS  
CITY ENGINEERING DIVISION**

**COLEMAN A. YOUNG MUNICIPAL CENTER  
2 WOODWARD AVE. SUITE 601  
DETROIT, MICHIGAN 48226  
PHONE: (313) 224-3949 TTY: 711  
[WWW.DETROITMI.GOV](http://WWW.DETROITMI.GOV)**

---



CITY OF DETROIT  
 DEPARTMENT OF PUBLIC WORKS  
 CITY ENGINEERING DIVISION

COLEMAN A. YOUNG MUNICIPAL CENTER  
 2 WOODWARD AVE. SUITE 601  
 DETROIT, MICHIGAN 48226  
 PHONE: (313) 224-3949 TTY: 711  
 WWW.DETROITMI.GOV

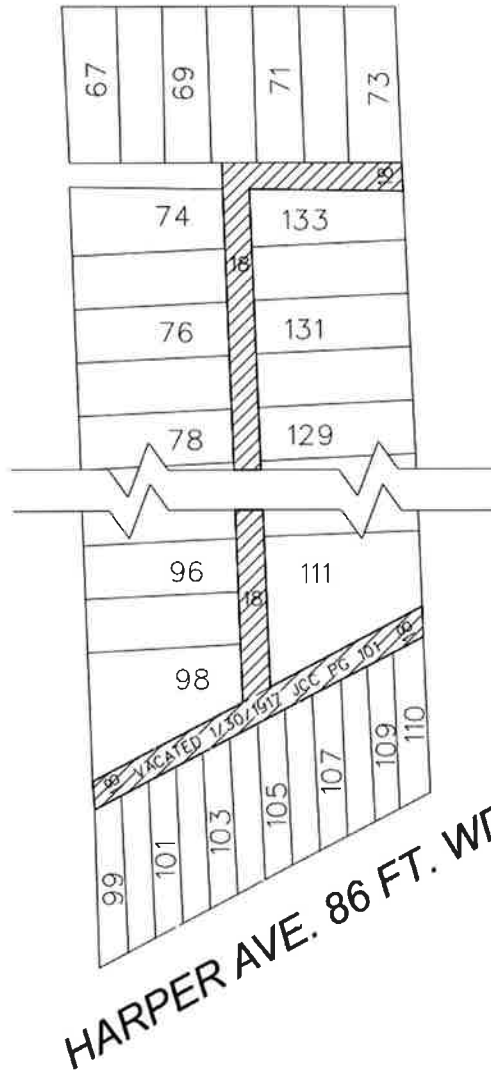
MAP-24-20

MILLER RD. 60 FT. WD.



TOWNSEND AVE. 60 FT. WD.

BALDWIN AVE. 60 FT. WD.



HARPER AVE. 86 FT. WD.



- REQUEST ENCROACHMENT (NEW CONCRETE PAVEMENT, MULCH PATHWAY, BENCHING, BOLLARDS, FENCING, ASSOCIATED STORM AND LANDSCAPING)  
 (FOR OFFICE USE ONLY)

CARTO 49 B

<b>B</b>					
<b>A</b>					
	DESCRIPTION	DRAWN	CHECKED	APPROVED	DATE
	REVISIONS				
	DRAWN BY	TS	CHECKED	LC	
	DATE	2-23-2024	APPROVED	JD	

REQUEST ENCROACHMENT INTO THE EAST/WEST ALLEY AND NORTH/ SOUTH ALLEY, 18 FT. WD. IN THE BLOCK BOUND BY BALDWIN AVE, HARPER AVE, TOWNSEND AVE, AND MILLER RD.

CITY OF DETROIT	
CITY ENGINEERING DIVISION	
SURVEY BUREAU	
JOB NO.	24-20
DRWG. NO.	



**CITY OF DETROIT  
DEPARTMENT OF PUBLIC WORKS  
CITY ENGINEERING DIVISION**

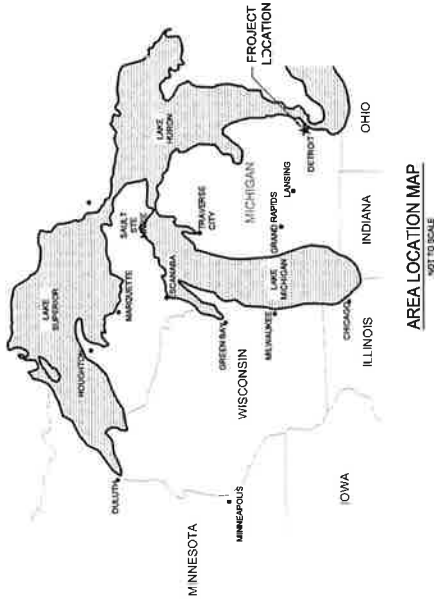
**COLEMAN A. YOUNG MUNICIPAL CENTER  
2 WOODWARD AVE. SUITE 601  
DETROIT, MICHIGAN 48226  
PHONE: (313) 224-3949 TTY: 711  
[WWW.DETROITMI.GOV](http://WWW.DETROITMI.GOV)**

---

# CITY OF DETROIT

## ARTS ALLEY - PHASE II

BURRELL TRAIL  
WAYNE COUNTY, MICHIGAN



DATE: 01/19/24  
PROJECT NO: 7508-23-0010  
DATE/ISSUE: 01/19/24

11111 Greenway Blvd  
Detroit, MI 48202  
734.467.1234  
www.ohm.com



**100% PLANS**  
OHM PROJECT NO. 7508-23-0010  
DATE/ISSUE: 01/19/24

Check That The Plans Were Prepared Under My Direct Supervision

1/22/24

NO.	DESCRIPTION	DATE	BY
1	ISSUE		
2	REVISED		
3	REVISED		
4	REVISED		
5	REVISED		
6	REVISED		
7	REVISED		
8	REVISED		
9	REVISED		
10	REVISED		
11	REVISED		
12	REVISED		
13	REVISED		
14	REVISED		
15	REVISED		
16	REVISED		
17	REVISED		
18	REVISED		
19	REVISED		
20	REVISED		
21	REVISED		
22	REVISED		
23	REVISED		
24	REVISED		
25	REVISED		
26	REVISED		
27	REVISED		
28	REVISED		
29	REVISED		
30	REVISED		
31	REVISED		
32	REVISED		
33	REVISED		
34	REVISED		
35	REVISED		
36	REVISED		
37	REVISED		
38	REVISED		
39	REVISED		
40	REVISED		
41	REVISED		
42	REVISED		
43	REVISED		
44	REVISED		
45	REVISED		
46	REVISED		
47	REVISED		
48	REVISED		
49	REVISED		
50	REVISED		
51	REVISED		
52	REVISED		
53	REVISED		
54	REVISED		
55	REVISED		
56	REVISED		
57	REVISED		
58	REVISED		
59	REVISED		
60	REVISED		
61	REVISED		
62	REVISED		
63	REVISED		
64	REVISED		
65	REVISED		
66	REVISED		
67	REVISED		
68	REVISED		
69	REVISED		
70	REVISED		
71	REVISED		
72	REVISED		
73	REVISED		
74	REVISED		
75	REVISED		
76	REVISED		
77	REVISED		
78	REVISED		
79	REVISED		
80	REVISED		
81	REVISED		
82	REVISED		
83	REVISED		
84	REVISED		
85	REVISED		
86	REVISED		
87	REVISED		
88	REVISED		
89	REVISED		
90	REVISED		
91	REVISED		
92	REVISED		
93	REVISED		
94	REVISED		
95	REVISED		
96	REVISED		
97	REVISED		
98	REVISED		
99	REVISED		
100	REVISED		



### WATER & SEWER UTILITY SYMBOLS

**EXISTING**

- 1.1 CONCRETE WATER MAIN
- 1.2 CONCRETE SEWER MAIN
- 1.3 CONCRETE WATER MAIN
- 1.4 CONCRETE SEWER MAIN
- 1.5 CONCRETE WATER MAIN
- 1.6 CONCRETE SEWER MAIN
- 1.7 CONCRETE WATER MAIN
- 1.8 CONCRETE SEWER MAIN
- 1.9 CONCRETE WATER MAIN
- 1.10 CONCRETE SEWER MAIN
- 1.11 CONCRETE WATER MAIN
- 1.12 CONCRETE SEWER MAIN
- 1.13 CONCRETE WATER MAIN
- 1.14 CONCRETE SEWER MAIN
- 1.15 CONCRETE WATER MAIN
- 1.16 CONCRETE SEWER MAIN
- 1.17 CONCRETE WATER MAIN
- 1.18 CONCRETE SEWER MAIN
- 1.19 CONCRETE WATER MAIN
- 1.20 CONCRETE SEWER MAIN

### MISCELLANEOUS UTILITY SYMBOLS

**EXISTING**

- 2.1 AIR
- 2.2 GAS
- 2.3 TELEPHONE
- 2.4 CABLE TELEVISION
- 2.5 FIBER OPTIC
- 2.6 WATER
- 2.7 SEWER
- 2.8 SANITARY
- 2.9 STORM
- 2.10 ELECTRICAL
- 2.11 CABLE TELEPHONE
- 2.12 FIBER OPTIC
- 2.13 WATER
- 2.14 SEWER
- 2.15 SANITARY
- 2.16 STORM
- 2.17 ELECTRICAL
- 2.18 CABLE TELEPHONE
- 2.19 FIBER OPTIC
- 2.20 WATER
- 2.21 SEWER
- 2.22 SANITARY
- 2.23 STORM
- 2.24 ELECTRICAL
- 2.25 CABLE TELEPHONE
- 2.26 FIBER OPTIC
- 2.27 WATER
- 2.28 SEWER
- 2.29 SANITARY
- 2.30 STORM
- 2.31 ELECTRICAL
- 2.32 CABLE TELEPHONE
- 2.33 FIBER OPTIC
- 2.34 WATER
- 2.35 SEWER
- 2.36 SANITARY
- 2.37 STORM
- 2.38 ELECTRICAL
- 2.39 CABLE TELEPHONE
- 2.40 FIBER OPTIC
- 2.41 WATER
- 2.42 SEWER
- 2.43 SANITARY
- 2.44 STORM
- 2.45 ELECTRICAL
- 2.46 CABLE TELEPHONE
- 2.47 FIBER OPTIC
- 2.48 WATER
- 2.49 SEWER
- 2.50 SANITARY
- 2.51 STORM
- 2.52 ELECTRICAL
- 2.53 CABLE TELEPHONE
- 2.54 FIBER OPTIC
- 2.55 WATER
- 2.56 SEWER
- 2.57 SANITARY
- 2.58 STORM
- 2.59 ELECTRICAL
- 2.60 CABLE TELEPHONE
- 2.61 FIBER OPTIC
- 2.62 WATER
- 2.63 SEWER
- 2.64 SANITARY
- 2.65 STORM
- 2.66 ELECTRICAL
- 2.67 CABLE TELEPHONE
- 2.68 FIBER OPTIC
- 2.69 WATER
- 2.70 SEWER
- 2.71 SANITARY
- 2.72 STORM
- 2.73 ELECTRICAL
- 2.74 CABLE TELEPHONE
- 2.75 FIBER OPTIC
- 2.76 WATER
- 2.77 SEWER
- 2.78 SANITARY
- 2.79 STORM
- 2.80 ELECTRICAL
- 2.81 CABLE TELEPHONE
- 2.82 FIBER OPTIC
- 2.83 WATER
- 2.84 SEWER
- 2.85 SANITARY
- 2.86 STORM
- 2.87 ELECTRICAL
- 2.88 CABLE TELEPHONE
- 2.89 FIBER OPTIC
- 2.90 WATER
- 2.91 SEWER
- 2.92 SANITARY
- 2.93 STORM
- 2.94 ELECTRICAL
- 2.95 CABLE TELEPHONE
- 2.96 FIBER OPTIC
- 2.97 WATER
- 2.98 SEWER
- 2.99 SANITARY
- 3.00 STORM

### EROSION CONTROL PLAN

**EXISTING**

- 3.1 CONCRETE CURB
- 3.2 CONCRETE CURB
- 3.3 CONCRETE CURB
- 3.4 CONCRETE CURB
- 3.5 CONCRETE CURB
- 3.6 CONCRETE CURB
- 3.7 CONCRETE CURB
- 3.8 CONCRETE CURB
- 3.9 CONCRETE CURB
- 3.10 CONCRETE CURB
- 3.11 CONCRETE CURB
- 3.12 CONCRETE CURB
- 3.13 CONCRETE CURB
- 3.14 CONCRETE CURB
- 3.15 CONCRETE CURB
- 3.16 CONCRETE CURB
- 3.17 CONCRETE CURB
- 3.18 CONCRETE CURB
- 3.19 CONCRETE CURB
- 3.20 CONCRETE CURB

### REAL ESTATE SYMBOLS

**EXISTING**

- 4.1 CONCRETE CURB
- 4.2 CONCRETE CURB
- 4.3 CONCRETE CURB
- 4.4 CONCRETE CURB
- 4.5 CONCRETE CURB
- 4.6 CONCRETE CURB
- 4.7 CONCRETE CURB
- 4.8 CONCRETE CURB
- 4.9 CONCRETE CURB
- 4.10 CONCRETE CURB
- 4.11 CONCRETE CURB
- 4.12 CONCRETE CURB
- 4.13 CONCRETE CURB
- 4.14 CONCRETE CURB
- 4.15 CONCRETE CURB
- 4.16 CONCRETE CURB
- 4.17 CONCRETE CURB
- 4.18 CONCRETE CURB
- 4.19 CONCRETE CURB
- 4.20 CONCRETE CURB

### UTILITY PATTERN

**EXISTING**

- 5.1 ELECTRICAL
- 5.2 GAS
- 5.3 CABLE TELEPHONE
- 5.4 FIBER OPTIC
- 5.5 WATER
- 5.6 SEWER
- 5.7 SANITARY
- 5.8 STORM
- 5.9 STORM/SANITARY/WATER
- 5.10 STORM/SANITARY/WATER
- 5.11 STORM/SANITARY/WATER
- 5.12 STORM/SANITARY/WATER
- 5.13 STORM/SANITARY/WATER
- 5.14 STORM/SANITARY/WATER
- 5.15 STORM/SANITARY/WATER
- 5.16 STORM/SANITARY/WATER
- 5.17 STORM/SANITARY/WATER
- 5.18 STORM/SANITARY/WATER
- 5.19 STORM/SANITARY/WATER
- 5.20 STORM/SANITARY/WATER

### ROW PATTERN

**EXISTING**

- 6.1 ROW
- 6.2 SECTION
- 6.3 PROPERTY/PARK
- 6.4 ROW
- 6.5 ROW
- 6.6 ROW
- 6.7 ROW
- 6.8 ROW
- 6.9 ROW
- 6.10 ROW
- 6.11 ROW
- 6.12 ROW
- 6.13 ROW
- 6.14 ROW
- 6.15 ROW
- 6.16 ROW
- 6.17 ROW
- 6.18 ROW
- 6.19 ROW
- 6.20 ROW

### TOPO PATTERN

**EXISTING**

- 7.1 HEDGE/TREE
- 7.2 FENCE
- 7.3 CURB
- 7.4 CURB
- 7.5 CURB
- 7.6 CURB
- 7.7 CURB
- 7.8 CURB
- 7.9 CURB
- 7.10 CURB
- 7.11 CURB
- 7.12 CURB
- 7.13 CURB
- 7.14 CURB
- 7.15 CURB
- 7.16 CURB
- 7.17 CURB
- 7.18 CURB
- 7.19 CURB
- 7.20 CURB

### PROPOSED PAVEMENT SURFACE TREATMENT LEGEND

**PROPOSED**

- 8.1 ASPHALT
- 8.2 ASPHALT
- 8.3 ASPHALT
- 8.4 ASPHALT
- 8.5 ASPHALT
- 8.6 ASPHALT
- 8.7 ASPHALT
- 8.8 ASPHALT
- 8.9 ASPHALT
- 8.10 ASPHALT
- 8.11 ASPHALT
- 8.12 ASPHALT
- 8.13 ASPHALT
- 8.14 ASPHALT
- 8.15 ASPHALT
- 8.16 ASPHALT
- 8.17 ASPHALT
- 8.18 ASPHALT
- 8.19 ASPHALT
- 8.20 ASPHALT

### REMOVAL LEGEND

**EXISTING**

- 9.1 ASPHALT
- 9.2 ASPHALT
- 9.3 ASPHALT
- 9.4 ASPHALT
- 9.5 ASPHALT
- 9.6 ASPHALT
- 9.7 ASPHALT
- 9.8 ASPHALT
- 9.9 ASPHALT
- 9.10 ASPHALT
- 9.11 ASPHALT
- 9.12 ASPHALT
- 9.13 ASPHALT
- 9.14 ASPHALT
- 9.15 ASPHALT
- 9.16 ASPHALT
- 9.17 ASPHALT
- 9.18 ASPHALT
- 9.19 ASPHALT
- 9.20 ASPHALT

### IF NECESSARY FOR CLARITY

**EXISTING**

- 10.1 ASPHALT
- 10.2 ASPHALT
- 10.3 ASPHALT
- 10.4 ASPHALT
- 10.5 ASPHALT
- 10.6 ASPHALT
- 10.7 ASPHALT
- 10.8 ASPHALT
- 10.9 ASPHALT
- 10.10 ASPHALT
- 10.11 ASPHALT
- 10.12 ASPHALT
- 10.13 ASPHALT
- 10.14 ASPHALT
- 10.15 ASPHALT
- 10.16 ASPHALT
- 10.17 ASPHALT
- 10.18 ASPHALT
- 10.19 ASPHALT
- 10.20 ASPHALT

### PROPOSED PAVEMENT SURFACE TREATMENT LEGEND

**PROPOSED**

- 11.1 ASPHALT
- 11.2 ASPHALT
- 11.3 ASPHALT
- 11.4 ASPHALT
- 11.5 ASPHALT
- 11.6 ASPHALT
- 11.7 ASPHALT
- 11.8 ASPHALT
- 11.9 ASPHALT
- 11.10 ASPHALT
- 11.11 ASPHALT
- 11.12 ASPHALT
- 11.13 ASPHALT
- 11.14 ASPHALT
- 11.15 ASPHALT
- 11.16 ASPHALT
- 11.17 ASPHALT
- 11.18 ASPHALT
- 11.19 ASPHALT
- 11.20 ASPHALT

### SPECIAL LEGEND

**EXISTING**

- 12.1 ASPHALT
- 12.2 ASPHALT
- 12.3 ASPHALT
- 12.4 ASPHALT
- 12.5 ASPHALT
- 12.6 ASPHALT
- 12.7 ASPHALT
- 12.8 ASPHALT
- 12.9 ASPHALT
- 12.10 ASPHALT
- 12.11 ASPHALT
- 12.12 ASPHALT
- 12.13 ASPHALT
- 12.14 ASPHALT
- 12.15 ASPHALT
- 12.16 ASPHALT
- 12.17 ASPHALT
- 12.18 ASPHALT
- 12.19 ASPHALT
- 12.20 ASPHALT

### REMOVAL LEGEND

**EXISTING**

- 13.1 ASPHALT
- 13.2 ASPHALT
- 13.3 ASPHALT
- 13.4 ASPHALT
- 13.5 ASPHALT
- 13.6 ASPHALT
- 13.7 ASPHALT
- 13.8 ASPHALT
- 13.9 ASPHALT
- 13.10 ASPHALT
- 13.11 ASPHALT
- 13.12 ASPHALT
- 13.13 ASPHALT
- 13.14 ASPHALT
- 13.15 ASPHALT
- 13.16 ASPHALT
- 13.17 ASPHALT
- 13.18 ASPHALT
- 13.19 ASPHALT
- 13.20 ASPHALT

### IF NECESSARY FOR CLARITY

**EXISTING**

- 14.1 ASPHALT
- 14.2 ASPHALT
- 14.3 ASPHALT
- 14.4 ASPHALT
- 14.5 ASPHALT
- 14.6 ASPHALT
- 14.7 ASPHALT
- 14.8 ASPHALT
- 14.9 ASPHALT
- 14.10 ASPHALT
- 14.11 ASPHALT
- 14.12 ASPHALT
- 14.13 ASPHALT
- 14.14 ASPHALT
- 14.15 ASPHALT
- 14.16 ASPHALT
- 14.17 ASPHALT
- 14.18 ASPHALT
- 14.19 ASPHALT
- 14.20 ASPHALT

### PROPOSED PAVEMENT SURFACE TREATMENT LEGEND

**PROPOSED**

- 15.1 ASPHALT
- 15.2 ASPHALT
- 15.3 ASPHALT
- 15.4 ASPHALT
- 15.5 ASPHALT
- 15.6 ASPHALT
- 15.7 ASPHALT
- 15.8 ASPHALT
- 15.9 ASPHALT
- 15.10 ASPHALT
- 15.11 ASPHALT
- 15.12 ASPHALT
- 15.13 ASPHALT
- 15.14 ASPHALT
- 15.15 ASPHALT
- 15.16 ASPHALT
- 15.17 ASPHALT
- 15.18 ASPHALT
- 15.19 ASPHALT
- 15.20 ASPHALT

### SPECIAL LEGEND

**EXISTING**

- 16.1 ASPHALT
- 16.2 ASPHALT
- 16.3 ASPHALT
- 16.4 ASPHALT
- 16.5 ASPHALT
- 16.6 ASPHALT
- 16.7 ASPHALT
- 16.8 ASPHALT
- 16.9 ASPHALT
- 16.10 ASPHALT
- 16.11 ASPHALT
- 16.12 ASPHALT
- 16.13 ASPHALT
- 16.14 ASPHALT
- 16.15 ASPHALT
- 16.16 ASPHALT
- 16.17 ASPHALT
- 16.18 ASPHALT
- 16.19 ASPHALT
- 16.20 ASPHALT

# GENERAL NOTES

## UTILITIES

MSD 302 UNDERGROUND UTILITY NOTIFICATION FOR THE PROTECTION OF UNDERGROUND UTILITIES AND IN CONFORMANCE WITH PUBLIC ADDRESS OR THE MESSAGE OR A MINIMUM OF 3 BUSINESS DAYS PRIOR TO EXCAVATING, INCLUDING VENDORS AND HOLDINGS.

THE EXISTING UTILITIES SHOWN ON THESE PLANS REPRESENT THE BEST INFORMATION AVAILABLE TO THE CONTRACTOR. THE CONTRACTOR SHALL BE RESPONSIBLE FOR THE LOCATION OF EXISTING UTILITIES.

## BENCHMARK ELEVATIONS

BENCHMARK ELEVATIONS SHOWN ON THESE PLANS ARE BASED ON NAVD 1988

## PROPERTY CORNERS

ANY PROPERTY CORNERS WITHIN THE FRONT OR BACK SLOPE SHALL BE STAKED AND DAMAGED UNNECESSARILY BY THE CONTRACTOR'S OPERATIONS WILL BE THE FINANCIAL RESPONSIBILITY OF THE CONTRACTOR. RE-ESTABLISHMENT OF ALL PROPERTY CORNERS DAMAGED DURING CONSTRUCTION SHALL BE THE RESPONSIBILITY OF THE CONTRACTOR'S EXPENSE.

## UTILITY NOTES

1. UNLESS SPECIFICALLY NOTED FOR REMOVAL ON THE CONSTRUCTION PLANS ALL EXISTING UTILITIES SHALL BE PROTECTED. EXISTING UTILITIES SHALL BE REMOVED AND REPLACED INDICATED TO THE COST OF CONSTRUCTION AT NO EXPENSE TO THE OWNER.

2. EXISTING WATER MAINS, GAS MAINS AND UNDERGROUND TELEPHONE, ELECTRIC AND CABLE TELEVISION LINES SHALL BE PROTECTED. THE EXACT DEPTH OF THESE UTILITIES IS NOT KNOWN AND THEREFORE NO ATTEMPT HAS BEEN MADE TO SHOW SUCH UTILITIES IN THE PROFILE OF THE CONSTRUCTION DRAWINGS. THE CONTRACTOR SHALL BE RESPONSIBLE FOR PROTECTING THESE UTILITIES WHICH ARE NOT SHOWN ON THESE PLANS. ANY UTILITIES THAT ARE DESTROYED DURING CONSTRUCTION IF DAMAGED OR DESTROYED DURING CONSTRUCTION THE CONTRACTOR SHALL BE RESPONSIBLE FOR THE COSTS TO REPAIR OR REPLACE THEM AT NO ADDITIONAL EXPENSE TO THE OWNER.

3. THE CONTRACTOR SHALL PROTECT EXISTING STORM, WATER MAIN, COMBINED AND SANITARY SEWERS IN A MANNER ACCEPTABLE TO THE ENGINEER DURING THE PROPOSED CONSTRUCTION. ANY UTILITY WHICH IS TO REMAIN IN SERVICE DURING CONSTRUCTION SHALL BE PROTECTED AND SHALL BE REPLACED BY THE CONTRACTOR AT NO ADDITIONAL EXPENSE TO THE OWNER.

4. PRIOR TO CONSTRUCTION THE CONTRACTOR SHALL EXPOSE EXISTING UTILITIES AT POINTS OF POSSIBLE CONFLICT SO THAT THESE CONFLICTS CAN BE RESOLVED.

5. CONTRACTOR TO COORDINATE ALL EXISTING GAS MAIN AND SERVICE LEAD CONFLICTS WITH DTE GAS AT LEAST 3 WORKING DAYS PRIOR TO RELOCATION. PLEASE CONTACT DASK DASHMATT (248) 365-6568 TO SCHEDULE RELOCATION.

6. SEWER PIPE WITHIN A 11' INFLUENCE OF THE ROAD SHALL BE BACKFILLED WITH MDOT CLASS II SAND. SEWERS OUTSIDE OF THE ROAD INFLUENCE MAY BE BACKFILLED WITH CLEAN, JOB EXCAVATED MATERIAL.

7. ALL STORM SEWER CONSTRUCTED FOR THIS PROJECT SHALL BE CLASS IV C75 REINFORCED CONCRETE UNLESS NOTED OTHERWISE ON THE PLANS.

## TRASH SERVICES

DURING CONSTRUCTION THE CONTRACTOR SHALL WORK TO MAINTAIN ACCESS TO ALL NEIGHBORHOODS AND TO PROVIDE ACCESS TO ALL UTILITIES. THE CONTRACTOR SHALL BE RESPONSIBLE FOR THE PROTECTION OF ALL UTILITIES AND TO AVOID ANY RELATED IMPACTS. THE CONTRACTOR SHALL ARRANGE FOR AN ALTERNATIVE PICKUP LOCATION AT NO ADDITIONAL COST TO THE OWNER.

## WORK ON PRIVATE PROPERTY

AS PART OF THE PROJECT, WORK WILL BE REQUIRED ON PRIVATELY OWNED PROPERTY. BEFORE ANY WORK IS COMMENCED ON PRIVATE PROPERTY, IT IS THE RESPONSIBILITY OF THE CONTRACTOR TO OBTAIN PERMISSION FROM THE PRIVATE PROPERTY OWNER WHICH WILL BE OBTAINED BY ACE. THE CONTRACTOR SHALL NOT CONTACT THE PROPERTY OWNER DIRECTLY UNLESS TOLD TO DO SO BY ACE. WHILE WORK IS IN PROGRESS, THE CONTRACTOR SHALL BE RESPONSIBLE FOR THE PROTECTION OF ALL UNEMPLOYED AND WORK PRODUCT LEFT IN A SAFE MANNER. AT THE CONCLUSION OF THE WORKDAY, ONCE WORK IS COMPLETE, THE CONTRACTOR SHALL NOTIFY ACE.

## SAWCUTS

THE CONTRACTOR SHALL SAWCUT FULL DEPTH THE EXISTING CONCRETE IN DOOR HMA NEAR AND SMOOTH CONNECTION TO THE EXISTING PAVEMENT OR DRIVEWAY AS REQUIRED AND DIRECTED. THIS WORK WILL NOT BE PAID FOR SEPARATELY, BUT WILL BE INCLUDED IN THE CONTRACT UNIT PRICE BID FOR OTHER REMOVAL ITEMS.

## OPEN EXCAVATIONS

THE PLACEMENT OF INTERLOCKING BRICKS AND/OR ALL EXCAVATIONS IS REQUIRED. THIS WILL NOT BE PAID FOR SEPARATELY, BUT WILL BE CONSIDERED AS HAVING BEEN INCLUDED IN THE CONTRACT UNIT PRICE BID FOR MOBILIZATION.

## REMOVING PAVEMENTS

THE CONTRACTOR SHALL CONDUCT PAVEMENT REMOVAL OPERATIONS SO THAT THE STREETS AND DRIVEWAYS ARE REMOVED IMMEDIATELY AHEAD OF THE GRADING OPERATIONS IN A NEAT AND CLEAN MANNER. CURBS AND DRIVEWAYS MAY BE OPENED TO THE PAVEMENT FOR REMOVING PAVEMENT SHALL FOLLOW THE PRICE AND PAYMENT PROCEDURE SECTION OF THE PROJECT SPECIFICATIONS. THE QUANTITIES SHOWN FOR PAVEMENT REMOVAL SHALL BE VERIFIED DURING CONSTRUCTION. REFER TO THE PAVEMENT CORES LOCATED IN THE PROPOSAL.

## PAVEMENT MARKINGS

PAVEMENT MARKINGS SHALL BE WITNESSED AND REPLACED IN AND WHEN IMPACTED BY THE WORK. IN THE EVENT THAT PAVEMENT MARKINGS CAN NOT BE PLACED DUE TO THE WORK, THE CONTRACTOR SHALL PLACE PERMANENT MARKINGS AT THE CONTRACTOR AND REPLACE WITH PERMANENT MARKINGS AT NO ADDITIONAL EXPENSE TO THE OWNER.

## PIPE MATERIAL

UNLESS OTHERWISE NOTED, ALL STORM SEWER SHALL BE CLASS IV C75 REINFORCED CONCRETE.

## MISCELLANEOUS

AN AUDIOVISUAL SURVEY OF THE PROJECT CONDITIONS IS REQUIRED PRIOR TO COMMENCING WORK. THIS INFORMATION IS TO BE PROVIDED TO THE CONTRACTOR AT THE PRE-CONSTRUCTION MEETING.

PROPERTY OWNERS OF THE PROJECT SHALL BE NOTIFIED OF THE PROJECT AND THE NAMES OF PROPERTY OWNERS SHOWN ON THE PLANS ARE FOR INFORMATION ONLY, AND THEIR ACCURACY IS NOT GUARANTEED.

ADJUSTING MONUMENT BOXES TO THE PROJECT SHALL BE PERMITTED. MATERIALS SHOWN ON THE PLANS SHALL BE NECESSARY TO PLACE OR ADJUST MONUMENT BOXES AS REQUIRED.

OSM BARBERS ON THE CONSTRUCTION SHEETS REPRESENT POINT INFORMATION PRESENTATION OF THIS INFORMATION IN NO WAY IMPAIRS THAT SUBSURFACE CONDITIONS ARE THE SAME AT LOCATIONS OTHER THAN THE EXACT LOCATION OF THE MONUMENT.

CONSTRUCTION SHALL CONFORM TO THE CURRENT STANDARDS AND SPECIFICATIONS OF THE CITY OF DETROIT.

## UNDERGROUND CONFLICTS

THE CONTRACTOR SHALL EXPOSE EXISTING STORM, SEWERS, SANITARY SEWERS, WATER MAIN AND PRIVATE UTILITIES TO VERIFY EXISTING ELEVATIONS BEFORE COMMENCING CONSTRUCTION. THE CONTRACTOR SHALL BE RESPONSIBLE FOR THE PROTECTION OF ALL UTILITIES. THIS WORK WILL NOT BE PAID AS EXCAVATION UNLESS PREVIOUSLY AUTHORIZED BY THE ENGINEER.

## STREET SIGNS

THE CONTRACTOR SHALL SALVAGE AND RESET SIGNS WITHIN THE WORK ZONE. ALL SIGNS NOT RESET IN THE PROJECT SHALL BE REMOVED AND DISPOSED OF BY THE CONTRACTOR.

## UTILITY CROSSINGS AT DRIVEWAYS

ALL UTILITY CROSSINGS AT DRIVEWAYS SHALL BE BACKFILLED IMMEDIATELY FOLLOWING PIPE INSTALLATION TO MAKE THESE DRIVEWAYS ACCESSIBLE.

## INCIDENTAL ITEMS

ANY ITEMS OF WORK INDICATED AS INCIDENTAL OR INCLUDED SHALL BE CONSIDERED AS PART OF THE PROJECT WORK AND SHALL BE COMPLETED AT NO ADDITIONAL EXPENSE TO THE OWNER. MATERIALS OR ITEMS INCLUDED ITEMS SHALL INCLUDE LABOR, MATERIALS AND EQUIPMENT. THIS WORK WILL NOT BE PAID AS EXCAVATION UNLESS PREVIOUSLY AUTHORIZED BY THE ENGINEER.

## SOILS AND EARTHWORK

SOIL INVESTIGATIONS HAVE NOT BEEN PERFORMED FOR THIS PROJECT. PRESUMPTIVE LOAD-BEARING VALUES TO BE IN ACCORDANCE WITH MICHIGAN BUILDING CODE TABLE 1608.3 UNLESS NOTED OTHERWISE. FOUNDATION DESIGN SHALL BE BASED ON THESE VALUES.

CONTRACTOR SHALL VERIFY SOIL BEARING CAPACITY PRIOR TO CONSTRUCTION. SPECIAL DESIGN AND CONSTRUCTION PROVISIONS FOR THIS PROJECT'S FOUNDATIONS.

1. NOT INCLUDE THE WORK PROVIDING ALL EQUIPMENT, MATERIALS, AND OBTAINED LABOR NECESSARY FOR EXCAVATION, SHIELDING, DEWATERING SYSTEMS, BACKFILL, AND COMPACTION OF SOILS AS REQUIRED TO CONSTRUCT STRUCTURES TO THE LINE AND GRADE AS SHOWN ON THE PLANS.

2. EXCAVATIONS SHALL BE DEEPER THAN THREE BUSINESS DAYS PRIOR TO THE PHONE (800-462-7171) NOT LATER THAN THREE BUSINESS DAYS PRIOR TO THE CONTRACTOR OF THE RESPONSIBILITY OF NOTIFYING OWNERS WHO MAY NOT BE AWARE OF THE EXCAVATION WORK.

3. EXCAVATE TO ELEVATIONS AND DIMENSIONS SHOWN ON THE PLANS WITHIN A TOLERANCE OF 10.10 FEET. EXCAVATE BY HAND TO FINAL GRADE FOR FOOTINGS. NOTIFY THE ENGINEER FOR AN INSPECTION WHEN THE EXCAVATION HAS REACHED SUBGRADE ELEVATION. IF UNSUITABLE BEARING MATERIALS ARE ENCOUNTERED, NOTIFY THE ENGINEER IMMEDIATELY FOR A CHANGE SUCH MATERIAL AS DIRECTED BY ENGINEER.

4. SATISFACTORY SOIL MATERIALS ARE DEFINED AS GRANULAR MATERIALS CLASSIFIED AS GW, GP, GM, SW, SP, SM, SW, SP-SM, OR SM BY THE UNIFIED SOIL CLASSIFICATION SYSTEM. MATERIALS CONTAINING LESS THAN 5% FINER MATERIAL PASSING NO. 200 SIEVE TO LESS THAN 2% MAXIMUM.

5. UNSATISFACTORY SOIL MATERIALS ARE SOILS CLASSIFIED AS GC, SW-SG, SP-SG, OR ANY ORGANIC MATERIAL. "MARK" IS AN UNSATISFACTORY SOIL MATERIAL. MATERIALS DO NOT PLACE ROCKS LARGER THAN 3" DIAMETER IN BACKFILL.

6. MATERIALS DO NOT PLACE ROCKS LARGER THAN 3" DIAMETER IN BACKFILL. COMPACT SOILS BELOW FOOTINGS TO A MINIMUM OF 95% OF THE MAXIMUM DENSITY AS DETERMINED BY MODIFIED PROCTOR ASTM D1557.

7. ALL EXCAVATIONS SHALL BE PROTECTED AND SHALL BE REPLACED AS DETERMINED BY MODIFIED PROCTOR OR MICHIGAN CONE TEST.

8. ALL EXCAVATIONS SHALL BE PROTECTED AND SHALL BE REPLACED AS DETERMINED BY MODIFIED PROCTOR OR MICHIGAN CONE TEST.

9. ALL EXCAVATIONS SHALL BE PROTECTED AND SHALL BE REPLACED AS DETERMINED BY MODIFIED PROCTOR OR MICHIGAN CONE TEST.

10. ALL EXCAVATIONS SHALL BE PROTECTED AND SHALL BE REPLACED AS DETERMINED BY MODIFIED PROCTOR OR MICHIGAN CONE TEST.

11. ALL EXCAVATIONS SHALL BE PROTECTED AND SHALL BE REPLACED AS DETERMINED BY MODIFIED PROCTOR OR MICHIGAN CONE TEST.

12. ALL EXCAVATIONS SHALL BE PROTECTED AND SHALL BE REPLACED AS DETERMINED BY MODIFIED PROCTOR OR MICHIGAN CONE TEST.

## PLA COORDINATION

PLANS TO BE SUBMITTED WITHIN THE MONTH AFTER SHALL CONTACT PLA TO COORDINATE THE INSTALLATION OF UP TO THREE (3) SOLAR LIGHTS TO BE FREE STANDING, 120W EQUIVALENT (MINIMUM) FIXTURES.

CONTACT THE PUBLIC LIGHTING AUTHORITY AT (313) 344-4000.



PROJECT NO.	111111
CLIENT PROJECT	
DATE	

PROJECT NUMBER	111111
CLIENT PROJECT	
DATE	

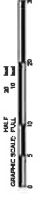
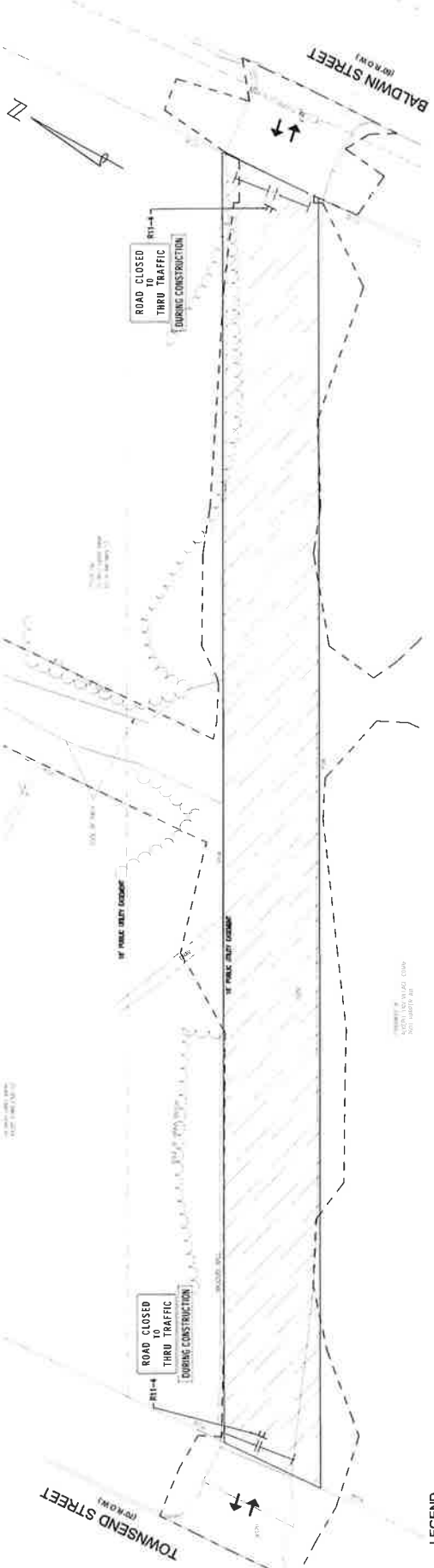
GENERAL NOTES





REVISION	DESCRIPTION	DATE
1		1/14/11

# BURRELL TRAIL ARTS ALLEY (R.F.O.W.)



**LEGEND**  
 -> -> ENTRY/EXIT  
 -> -> WORK ZONE  
 - - - - - BARRICADE TYPE III HIGH INTENSITY, COULETTES LIMITED

**STAGING AND PROGRESS OF THE WORK**  
 THE CONTRACTOR SHALL REVIEW ALL ASPECTS OF THE CONTRACT AND COORDINATE WORK WITH ALL AFFECTED PARTIES TO ENSURE PRACTICABLE. THIS INCLUDES A METHODOLOGICAL PROGRESSION OF THE WORK THAT LIMITS IMPACTS TO STREETS.  
 DURING CONSTRUCTION, IT IS THE CONTRACTOR'S RESPONSIBILITY TO ENSURE THAT THE ALLEY IS PROPERLY PROTECTED & SECURED. OPEN EXCAVATIONS SHALL BE COVERED WITH APPROVED SAFETY DECKS AT THE CONCLUSION OF THE WORK DAY.

**STAGING AREAS**  
 AS PART OF THIS PROJECT, STAGING AREAS MAY BE REQUIRED TO STORE MATERIALS AND EQUIPMENT. ALL STAGING AREAS SHALL BE THE RESPONSIBILITY OF PROVIDING ADDITIONAL SIGNAGE AND MARKINGS TO THE SURROUNDING TRAFFIC. STAGING AREAS SHALL NOT IMPED PEDESTRIAN OR VEHICULAR TRAFFIC PATTERNS.

**TRAFFIC CONTROL**  
 THE CONTRACTOR SHALL BE RESPONSIBLE FOR ERECTING AND MAINTAINING ALL TRAFFIC CONTROL DEVICES. ALL TRAFFIC CONTROL SHALL BE PER THE LATEST VERSION OF THE MICHIGAN MANUAL FOR UNIFORM TRAFFIC CONTROL DEVICES. TRAFFIC CONTROL DEVICES ARE IN PLACE AND IN WORKING ORDER.

IF WORK IS REQUIRED WITHIN THE ROAD ROW, CLOSURES PER MUTI MAINTENANCE TRAFFIC TYPICAL NO. 410M-ALTR-PHASE SHALL BE IMPLEMENTED. IF WORK AFFECTS THE SIDEWALK, FULL SIDEWALK CLOSURES & DETOURS SHALL BE IMPLEMENTED.



**STAGING AND PROGRESS OF THE WORK**  
 THE CONTRACTOR SHALL REVIEW ALL ASPECTS OF THE CONTRACT AND COORDINATE WORK WITH ALL AFFECTED PARTIES TO ENSURE PRACTICABLE. THIS INCLUDES A METHODOLOGICAL PROGRESSION OF THE WORK THAT LIMITS IMPACTS TO STREETS.  
 DURING CONSTRUCTION, IT IS THE CONTRACTOR'S RESPONSIBILITY TO ENSURE THAT THE ALLEY IS PROPERLY PROTECTED & SECURED. OPEN EXCAVATIONS SHALL BE COVERED WITH APPROVED SAFETY DECKS AT THE CONCLUSION OF THE WORK DAY.

**STAGING AREAS**  
 AS PART OF THIS PROJECT, STAGING AREAS MAY BE REQUIRED TO STORE MATERIALS AND EQUIPMENT. ALL STAGING AREAS SHALL BE THE RESPONSIBILITY OF PROVIDING ADDITIONAL SIGNAGE AND MARKINGS TO THE SURROUNDING TRAFFIC. STAGING AREAS SHALL NOT IMPED PEDESTRIAN OR VEHICULAR TRAFFIC PATTERNS.

**TRAFFIC CONTROL**  
 THE CONTRACTOR SHALL BE RESPONSIBLE FOR ERECTING AND MAINTAINING ALL TRAFFIC CONTROL DEVICES. ALL TRAFFIC CONTROL SHALL BE PER THE LATEST VERSION OF THE MICHIGAN MANUAL FOR UNIFORM TRAFFIC CONTROL DEVICES. TRAFFIC CONTROL DEVICES ARE IN PLACE AND IN WORKING ORDER.

IF WORK IS REQUIRED WITHIN THE ROAD ROW, CLOSURES PER MUTI MAINTENANCE TRAFFIC TYPICAL NO. 410M-ALTR-PHASE SHALL BE IMPLEMENTED. IF WORK AFFECTS THE SIDEWALK, FULL SIDEWALK CLOSURES & DETOURS SHALL BE IMPLEMENTED.

# BURRELL TRAIL ARTS ALLEY (R.F.O.W.)

GRAPHIC SCALE: 1" = 10'

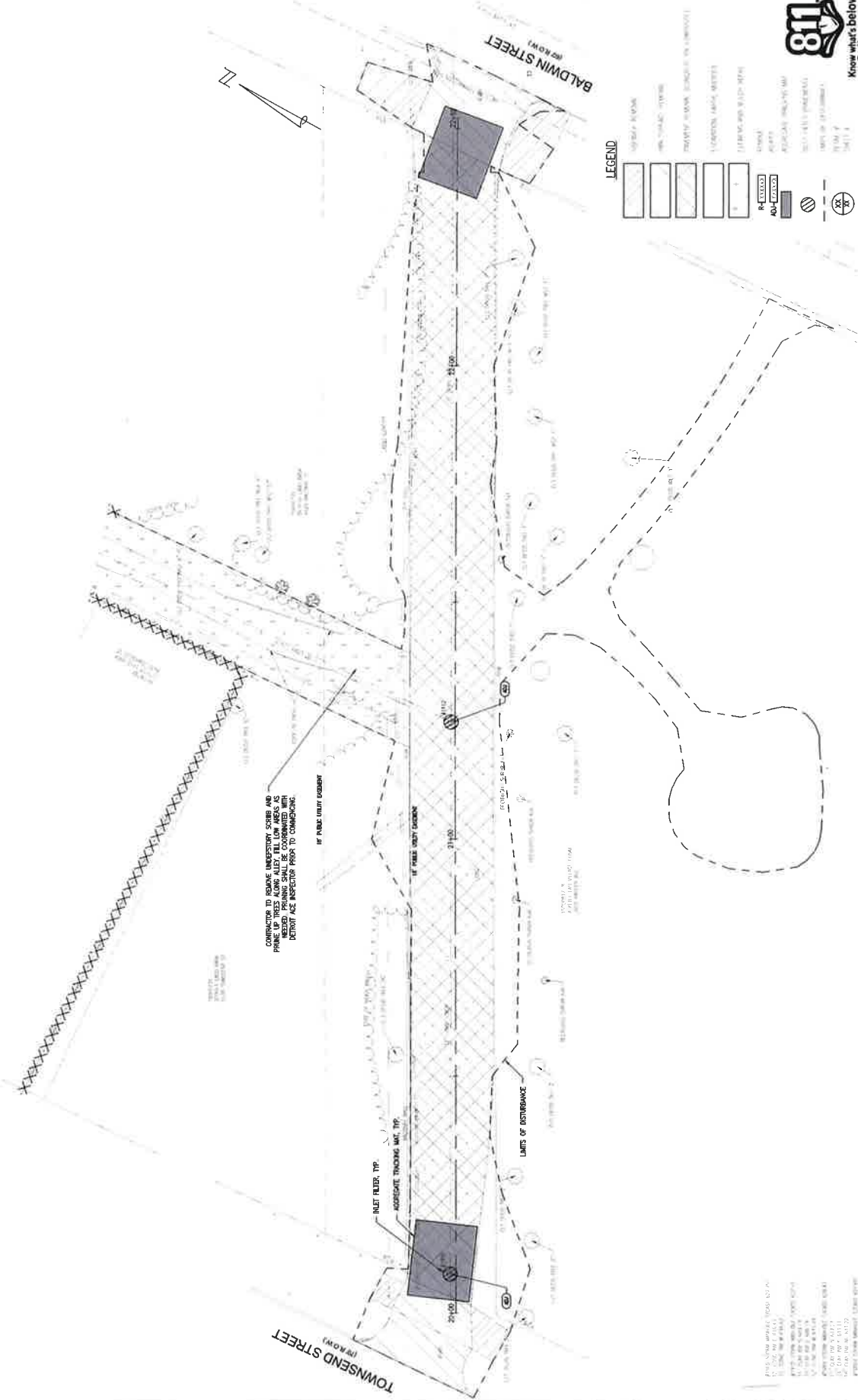


livingLAB



REVISION	DESCRIPTION	DATE

CITY OF DETROIT  
 ARTS ALLEY - PHASE II  
 BURRELL TRAIL  
 DEMOLITION/ALLEY CLEANUP



**LEGEND**

	EXISTING FLOOR
	PROPOSED FLOOR
	PROPOSED FLOOR ELEVATION (IN LIFT/STAIR)
	LOCATION, AREA, HEIGHT
	EXISTING AND PROPOSED
	ADJ. LOT
	ADJ. LOT
	ADJ. LOT
	ADJ. LOT
	ADJ. LOT
	ADJ. LOT
	ADJ. LOT
	ADJ. LOT
	ADJ. LOT
	ADJ. LOT
	ADJ. LOT



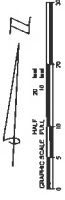
NOTE: CONTRACTOR TO CONFIRM APPROVAL FROM PUBLIC UTILITY UTILITIES PRIOR TO BEGINNING REMOVAL

PROJECT NO. 2008-077  
 DATE: 08/14/12  
 DRAWN BY: J. SMITH  
 CHECKED BY: J. SMITH  
 DATE: 08/14/12  
 SCALE: AS SHOWN  
 PROJECT: BURRELL TRAIL ARTS ALLEY  
 SHEET: 63 OF 63

REVISION	DESCRIPTION	DATE

PROJECT NUMBER	716	DEVELOPMENT	CLEAN PROJECT
DATE	2/18/2016		
CITY OF DETROIT ARTS ALLEY - PHASE II BURRELL TRAIL DEMOLITION/ALLEY CLEANUP			

# BURRELL TRAIL ARTS ALLEY (IF ROW)



**LEGEND**

- EXISTING STRUCTURE
- DEMOLITION STRUCTURE
- UTILITY LINES
- EASEMENT
- RIGHT-OF-WAY
- STREET
- ALLEY
- PROPERTY LINE
- BOUNDARY LINE
- SURVEY POINT
- CORNER MARKER
- MONUMENT
- ENCROACHMENT
- OBSTRUCTION
- UTILITY VALVE
- MANHOLE
- CATCH BASIN
- STORM SEWER
- SANITARY SEWER
- WATER MAIN
- GAS LINE
- ELECTRIC LINE
- TELEPHONE LINE
- CABLE TV LINE
- FIRE HYDRANT
- FIRE ALARM BOX
- FIRE ALARM CALL POINT
- FIRE ALARM CONTROL PANEL
- FIRE ALARM BELL
- FIRE ALARM BELL BOX
- FIRE ALARM BELL TOWER
- FIRE ALARM BELL TOWER FOUNDATION
- FIRE ALARM BELL TOWER ENCLOSURE
- FIRE ALARM BELL TOWER LADDER
- FIRE ALARM BELL TOWER ROOF
- FIRE ALARM BELL TOWER CHIMNEY
- FIRE ALARM BELL TOWER VENT
- FIRE ALARM BELL TOWER EXHAUST
- FIRE ALARM BELL TOWER FOUNDATION
- FIRE ALARM BELL TOWER ENCLOSURE
- FIRE ALARM BELL TOWER LADDER
- FIRE ALARM BELL TOWER ROOF
- FIRE ALARM BELL TOWER CHIMNEY
- FIRE ALARM BELL TOWER VENT
- FIRE ALARM BELL TOWER EXHAUST



NOTES:  
1. CONTRACTOR TO VERIFY PROPERTY OWNERS PRIOR TO DEMOLITION.  
2. CONTRACTOR TO VERIFY PROPERTY OWNERS PRIOR TO DEMOLITION.

# BURRELL TRAIL ARTS ALLEY

(18 ROW)



livingLAB



REVISION	DATE

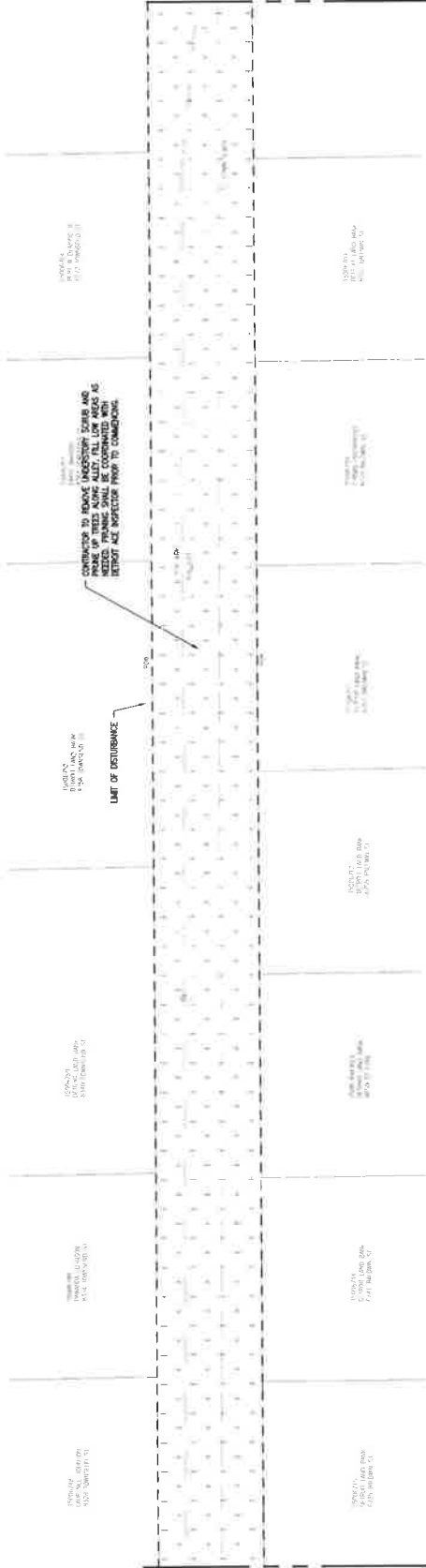
PROJECT NUMBER	2201
CLIENT PROJECT	ARTS ALLEY - PHASE II
DATE	
PROJECT NAME	BURRELL TRAIL
DEMOLITION/ALLEY CLEANUP	

C8



MATCH LINE SEE PREVIOUS SHEET

MATCH LINE SEE NEXT SHEET



### LEGEND

- UTILITY MARKER
- UTILITY MARKER
- UTILITY MARKER (ELECTRIC OR GAS)
- C-CURTAIN, EARTH, MATERIALS
- CLEARING AND WELLS (GAS)
- R-4-CURB
- AD-4-CURB
- AC-CURB (BRICK/PAV. MAT)
- WET DRAIN (CONCRETE)
- LIMITS OF DISTURBANCE
- 18 ROW

NOTE: CONTRACTOR TO OBTAIN APPROVAL FROM PRIVATE PROPERTY OWNER PRIOR TO FENCING REMOVAL.



livingLAB



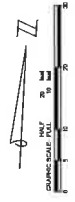
REVISION	DESCRIPTION	DATE

PROJECT NUMBER: 17-0000000000  
 SHEET NO.: 69  
 CITY OF DETROIT  
 ARTS ALLEY - PHASE II  
 BURRELL TRAIL  
 DEMOLITION/ALLEY CLEANUP

69

# BURRELL TRAIL ARTS ALLEY

(8' R.O.W.)



BALDWIN STREET (8' R.O.W.)

CONTRACTOR TO REMOVE UNDERSTORY SCRUB AND  
 TRUNKS OF TREES WITHIN ALL OUTLINED AREAS  
 BEFORE PERFORMING ANY DEMOLITION WORK.  
 DETROIT ACE INSPECTOR PRIOR TO COMMENCING.

LIMITS OF DISTURBANCE

MATCH LINE SEE PREVIOUS SHEET

### LEGEND

- SCUMM REMOVAL
- 10% SLOPE REMOVAL
- (REMOVE) (REMOVE) (REMOVE) (REMOVE)
- EXCAVATION (AS APPLIED)
- CITRIC ACID BATTERY
- PLUMB
- SHEET
- 60% CALL (REMOVE)
- 10% CALL (REMOVE)
- LIMITS OF DISTURBANCE
- (REMOVE)
- SHEET

NOTE:  
 CONTRACTOR TO OBTAIN APPROVAL FROM  
 PRIVATE PROPERTY OWNER PRIOR TO FENCING REMOVAL



Know what's below.  
 Call before you dig.







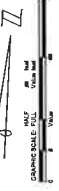
livingLAB



DESIGNED FOR: TOWN PLANS  
REVISION: REVISION 01  
DATE: 08/24/11

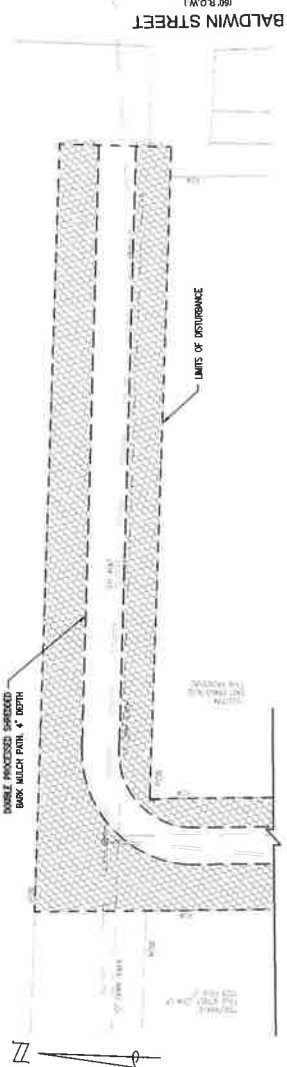
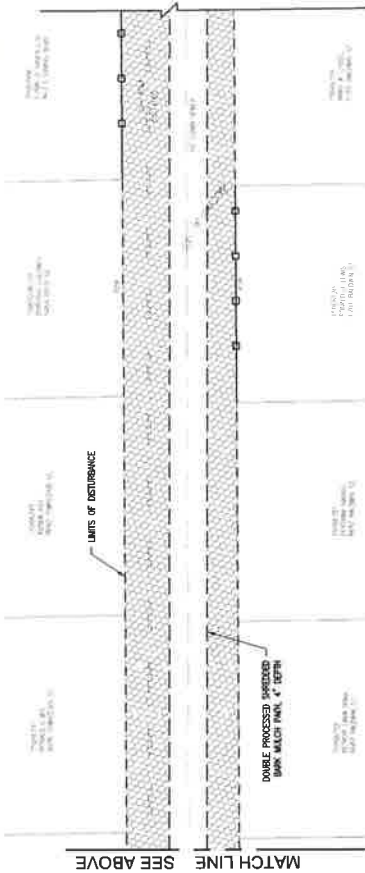
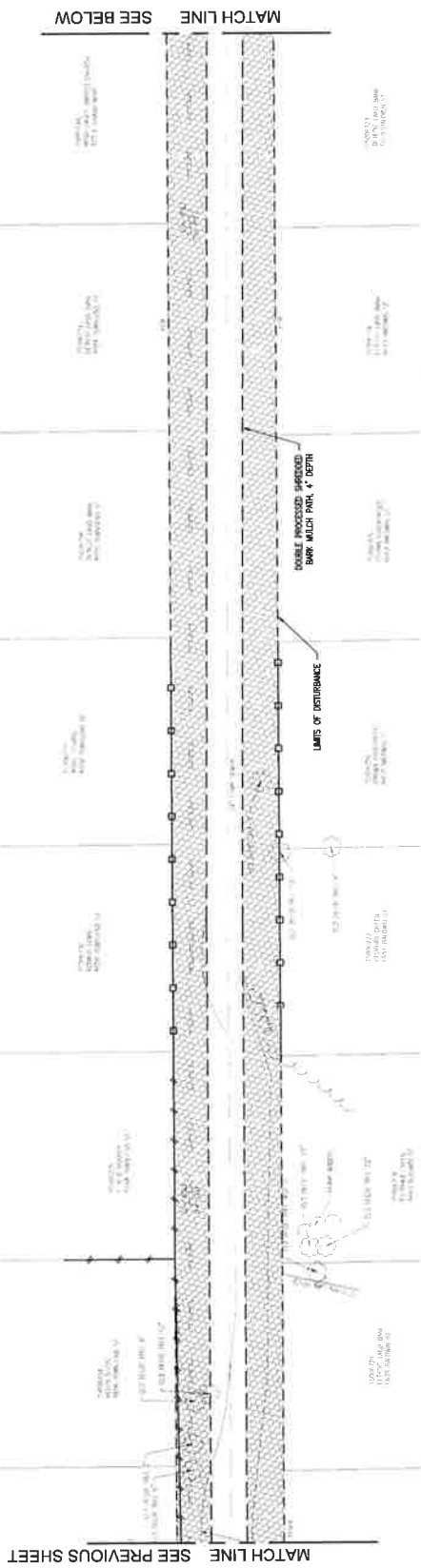
PROJECT NUMBER: PM 026868 LEAD: CLARENCE MCGO  
JOB NUMBER: 274  
CITY OF DETROIT  
ARTS ALLEY - PHASE II  
BURRELL TRAIL  
SITE LAYOUT PLAN

C11



# BURRELL TRAIL ARTS ALLEY

(IF ROW)



**LEGEND**

- PROPOSED CONCRETE PAVEMENT
- PROPOSED ASPHALT PAVEMENT
- PROPOSED INTERLOCKING PAVERS
- PROPOSED 18" CURB (SEE PLAN)
- PROPOSED 4" 11" WOODEN FENCE
- PROPOSED UTILITY ACCESS: ELECTRIC, GAS, WATER



livingLAB

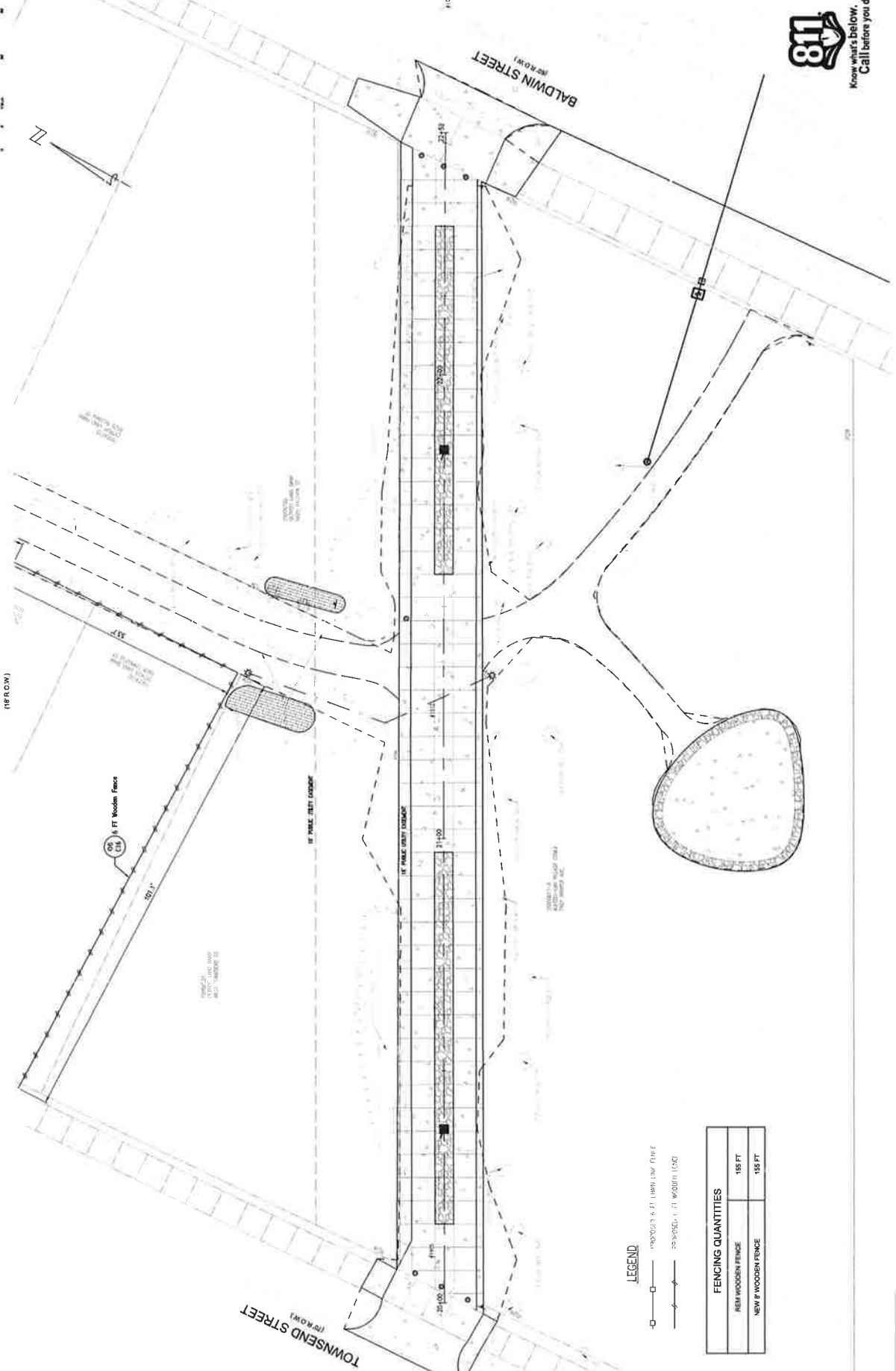


DATE	DESCRIPTION	REVISION

CITY OF DETROIT  
 ARTS ALLEY - PHASE II  
 BURRELL TRAIL  
 SITE LAYOUT PLAN - FENCING

C12

# BURRELL TRAIL ARTS ALLEY



**LEGEND**

	6 FT. HIGH 1.5W. FENCE
	1.5W. FENCE

**FENCING QUANTITIES**

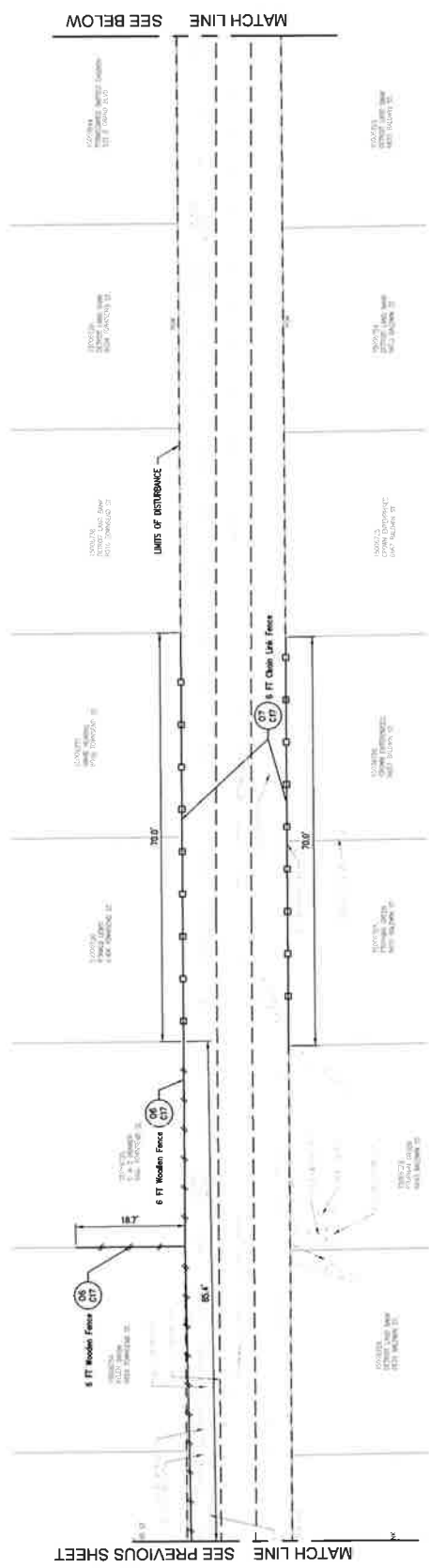
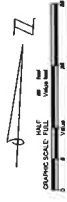
REM WOODEN FENCE	155 FT
NEW 6' WOODEN FENCE	155 FT



Know what's below. Call before you dig.

# BURRELL TRAIL ARTS ALLEY

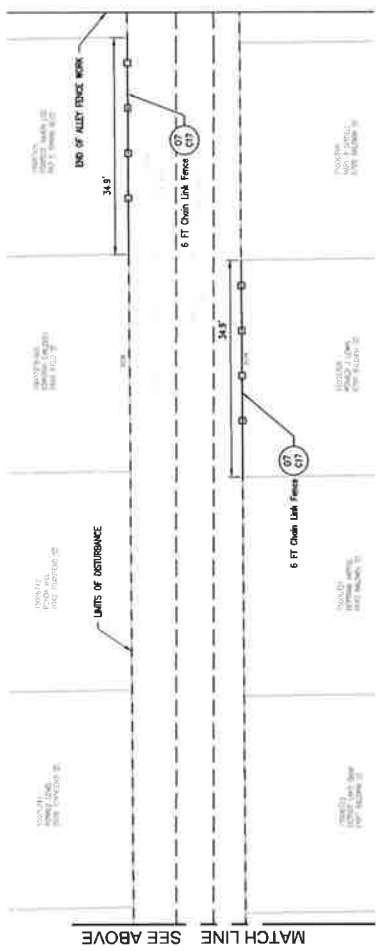
(IF ROOM)



**LEGEND**

	6 FT WOODEN FENCE
	6 FT CHAIN LINK FENCE
	8 FT CHAIN LINK FENCE

FENCING QUANTITIES	
REM WOODEN FENCE	210 FT
REM 6 WOODEN FENCE	104 FT
NEW 6 CHAIN LINK FENCE	210 FT



PROJECT NUMBER  
 PROJECT NAME  
 PROJECT LOCATION  
 DATE

PROJECT NUMBER  
 PROJECT NAME  
 PROJECT LOCATION  
 DATE

PROJECT NUMBER  
 PROJECT NAME  
 PROJECT LOCATION  
 DATE

C13

SITE LAYOUT PLAN - FENCING  
 BURRELL TRAIL  
 ARTS ALLEY - PHASE II  
 CITY OF DETROIT



livingLAB



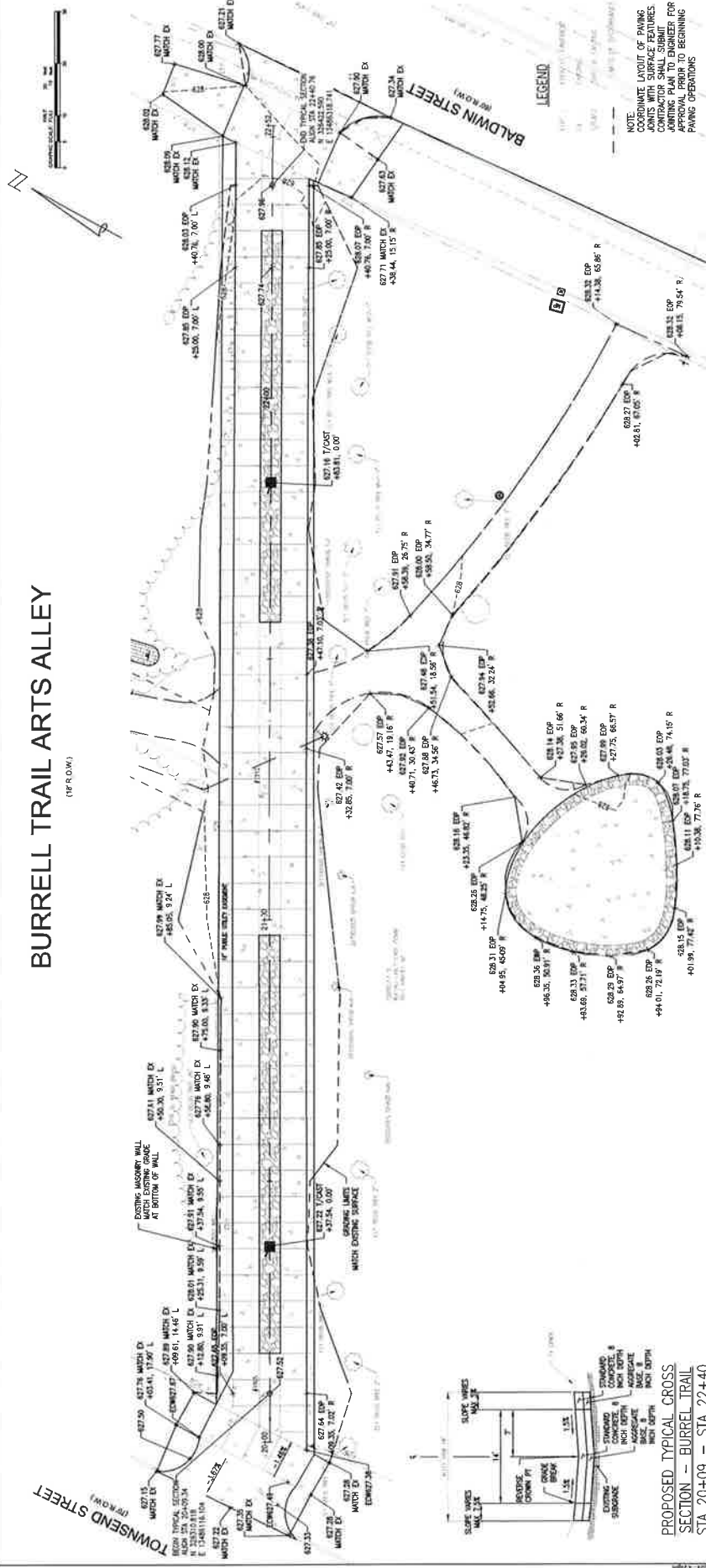
PROJECT NUMBER	PA	DATE
DATE	DATE	DATE
REVISION	DESCRIPTION	DATE

CITY OF DETROIT  
ARTS ALLEY - PHASE II  
BURRELL TRAIL  
GRADING PLAN

C14

# BURRELL TRAIL ARTS ALLEY

(R.F.P.O.M.)



PROPOSED TYPICAL CROSS SECTION - BURRELL TRAIL STA 20+09 - STA 22+40

NOTE: COORDINATE LAYOUT OF PAVING JOINTS WITH SURFACE FEATURES. CONTRACTOR SHALL SUBMIT PAVING JOINT LAYOUT FOR APPROVAL PRIOR TO BEGINNING PAVING OPERATIONS.

LEGEND

811  
Know what's below.  
Call before you dig.

PROPOSED GRADE 0 L

PROPOSED GRADE 0 L

PROPOSED GRADE 0 L

PROPOSED GRADE 0 L

PROPOSED GRADE 0 L

PROPOSED GRADE 0 L

PROPOSED GRADE 0 L

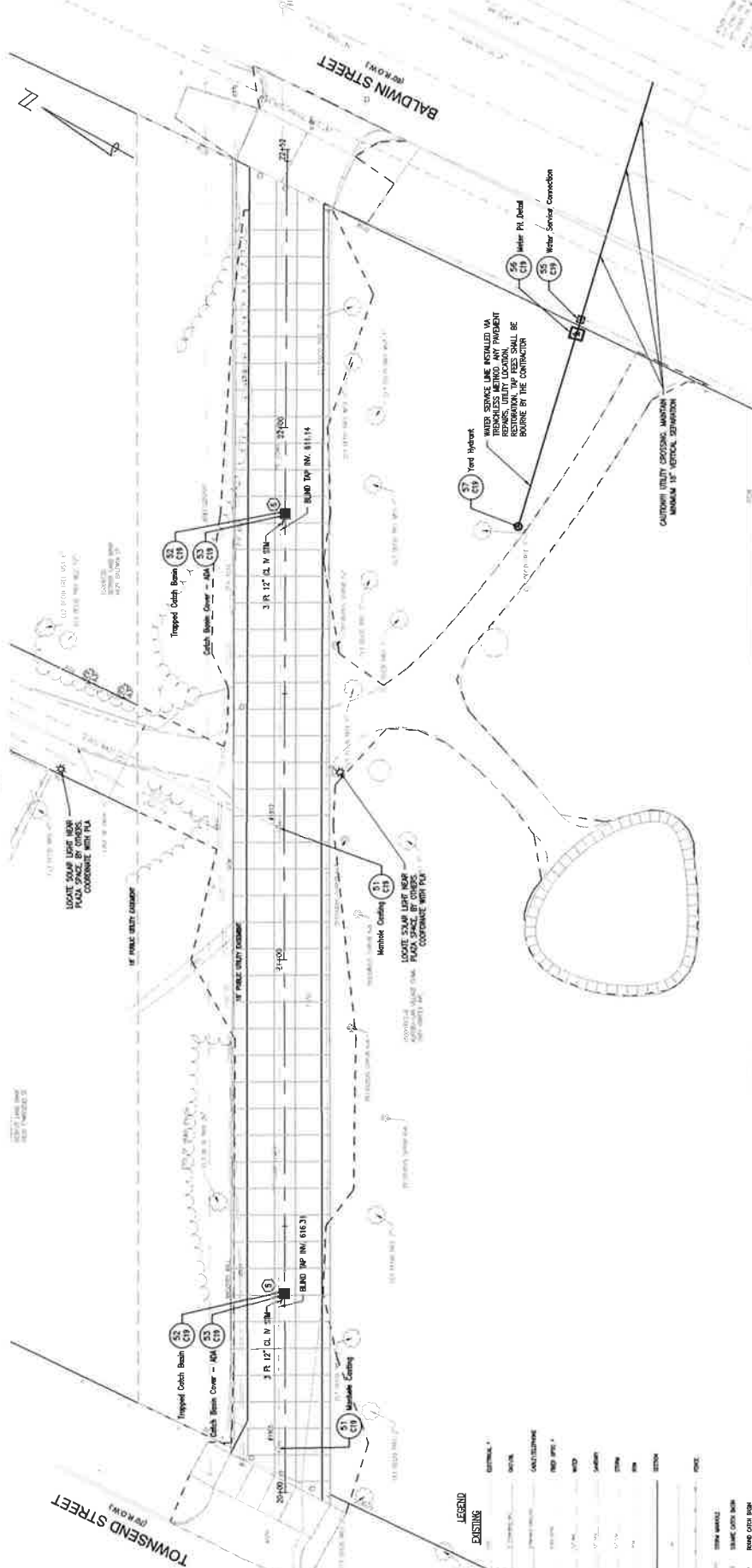
PROJECT NUMBER	PA	DATE
DATE	DATE	DATE
REVISION	DESCRIPTION	DATE

CITY OF DETROIT  
ARTS ALLEY - PHASE II  
BURRELL TRAIL  
GRADING PLAN

C14

BURRELL TRAIL ARTS ALLEY

(P ROW)



Know what's below.  
Call before you dig.

LEGEND

EXISTING	
[Symbol]	UTILITY
[Symbol]	MANHOLE
[Symbol]	CONCRETE
[Symbol]	PIPE
[Symbol]	WATER
[Symbol]	SEWER
[Symbol]	STORM
[Symbol]	ASPH
[Symbol]	CONC
[Symbol]	GRADE
[Symbol]	PROPOSED

- ⑤ 24" 20437.45, 0.0' 30" 10437.45, 0.0' 30" 10437.45, 0.0' 30" 10437.45  
12" 11" W 623.72
- ⑥ 24" 21483.45, 0.0' 30" 11483.45, 0.0' 30" 11483.45, 0.0' 30" 11483.45  
12" 11" W 623.66



livingLAB

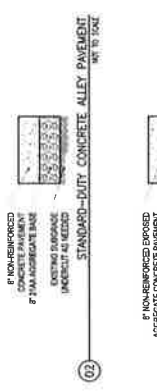
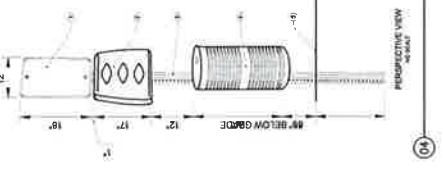


REVISION	DESCRIPTION	DATE

PROJECT NUMBER: PM  
 DRAWING TITLE: GUEST ROOM  
 CITY OF DETROIT  
 ARTS ALLEY - PHASE II  
 BURELL TRAIL

MISCELLANEOUS DETAILS

C16

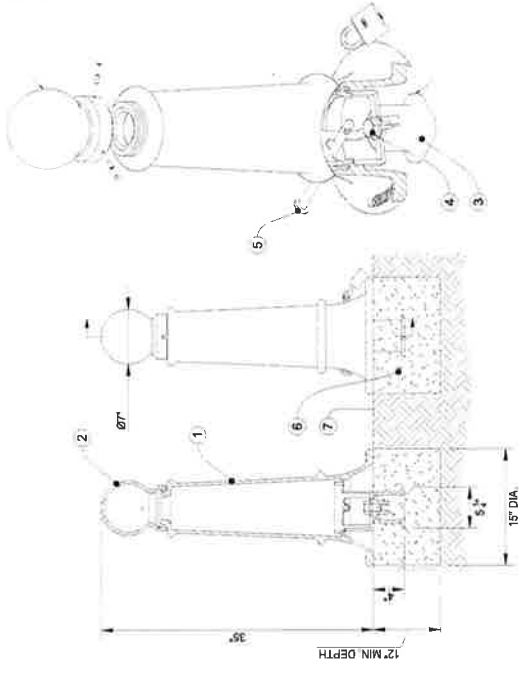


**PRODUCT INFORMATION:**  
 MANUFACTURER: RELIANCE-FOUNDRY  
 MODEL: RT581 (REMOVABLE ANCHOR CASTING IN NEW CONCRETE)  
 COLOR: TBD AT TIME OF ORDER  
 FINISH: POLYESTER POWDERCOATED  
 INSTALLATION: REMOVABLE - ANCHOR CASTING IN NEW CONCRETE  
 TEL: 877-789-3245  
 WWW.RELIANCE-FOUNDRY.COM

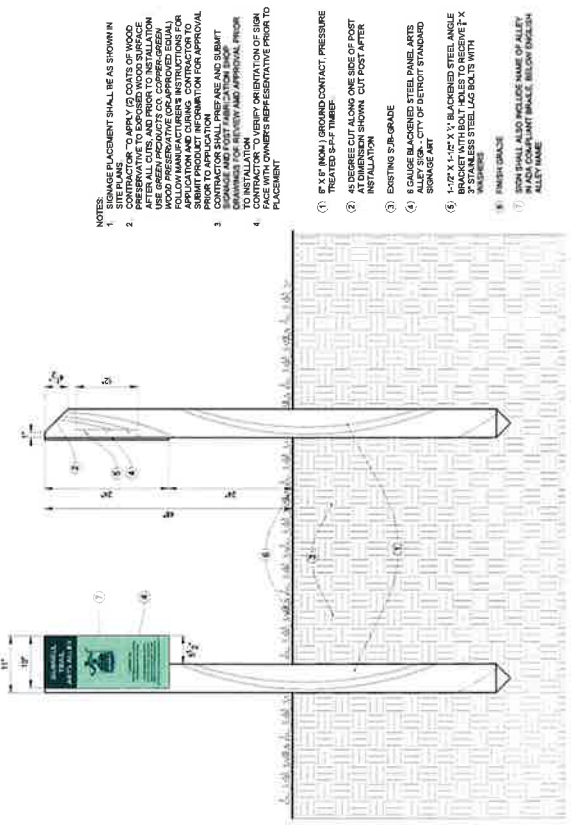
**NOTES:**

- PRODUCT NOT FULLY ASSEMBLED. CONTRACTOR SHALL ASSEMBLE AND INSTALL BOLLARD PER MANUFACTURER INSTRUCTIONS AND SPECIFICATIONS. BOLLARDS SHALL BE INSTALLED IN LOCATIONS AS INDICATED IN PLANS. CONTRACTOR SHALL SUBMIT MANUFACTURER PRODUCT DATA SHEETS AND SPECIFICATIONS FOR REVIEW AND APPROVAL PRIOR TO PURCHASE.

- 1) RT581 BASE
- 2) RT581 CAP
- 3) RT500 ANCHOR CASTING 1"
- 4) RT500 REMOVABLE MOUNT
- 5) RT500 LOCK PIN 3" X 10"
- 6) NEW CONCRETE
- 7) FINISH GRADE

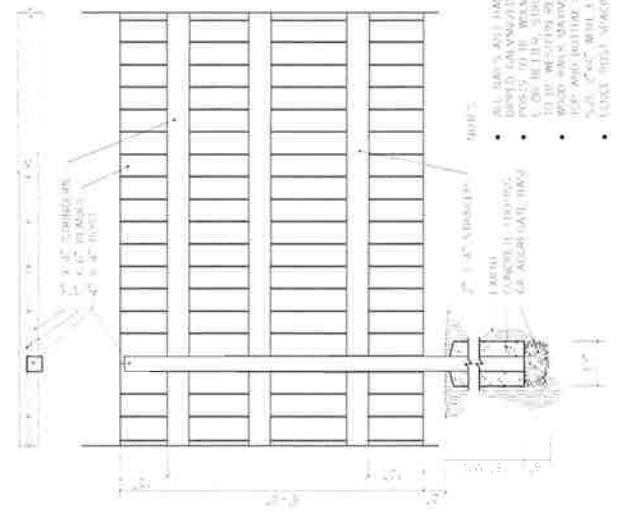


CAST IRON DECORATIVE BOLLARD, REMOVABLE  
NET TO SCALE



- NOTES:**
- 1) SIGNAGE PLACEMENT SHALL BE AS SHOWN IN SITE PLANS.
  - 2) PRESERVE EXISTING TREES AND UTILITIES. PRESERVE TO EXPOSED WOOD SURFACE AFTER ALL CUTS AND PRIOR TO INSTALLATION. WOOD PRESERVATIVE (OR-APPROVED EQUAL) SHALL BE APPLIED TO ALL EXPOSED WOOD SURFACES FOR APPLICATION AND CURING. CONTRACTOR TO SUBMIT PRODUCT INFORMATION FOR APPROVAL.
  - 3) CONTRACTOR SHALL PRESERVE AND SUBMIT EXISTING TREES AND UTILITIES. CONTRACTOR TO INSTALLATION (FIELD OBSERVATION OF SIGN FACE WITH OWNERS REPRESENTATIVE PRIOR TO PLACEMENT).
  - 4) FINISH GRADE
  - 5) SIGN SHALL ALSO INCLUDE NAME OF ALLEY AND ARTIST NAME, BELOW ENGLISH ALLEY NAME.

6 FT. WOODEN FENCE  
NET TO SCALE

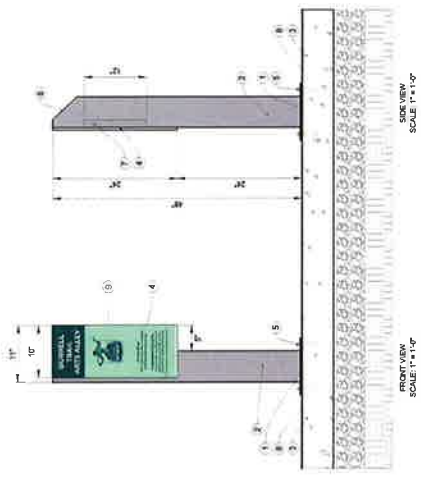


06

ARTS ALLEY STANDARD SIGN WOOD POST DIRECT BURRY  
NET TO SCALE

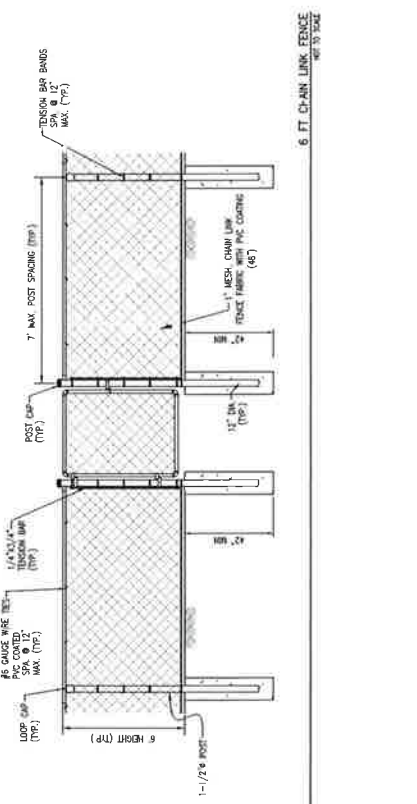
05

- NOTES:**
1. SIGNAGE PLACEMENT SHALL BE AS SHOWN IN SITE PLANS.
  2. SIGNAGE PLACEMENT SHALL BE AS SHOWN IN SITE PLANS.
  3. STEEL PIPE MATCHING THE SAME GAUGE AND GAUGE AT WELDED IN PLACE. WELDED SEAM SHALL BE GROUNDED TO SQUARE STEEL TUBING SHALL BE WELDED TO STEEL BASE PLATE. WELDED SEAM SHALL BE GROUNDED TO A CONTRACTOR SHALL PREPARE AND SUBMIT SIGNAGE AND APPROVAL PRIOR TO INSTALLATION.
  4. CONTRACTOR SHALL PREPARE AND SUBMIT SIGNAGE AND APPROVAL PRIOR TO INSTALLATION.
  5. CONTRACTOR SHALL PREPARE AND SUBMIT SIGNAGE AND APPROVAL PRIOR TO INSTALLATION.
  6. CONTRACTOR SHALL PREPARE AND SUBMIT SIGNAGE AND APPROVAL PRIOR TO INSTALLATION.
  7. CONTRACTOR SHALL PREPARE AND SUBMIT SIGNAGE AND APPROVAL PRIOR TO INSTALLATION.
  8. CONTRACTOR SHALL PREPARE AND SUBMIT SIGNAGE AND APPROVAL PRIOR TO INSTALLATION.
  9. CONTRACTOR SHALL PREPARE AND SUBMIT SIGNAGE AND APPROVAL PRIOR TO INSTALLATION.
  10. CONTRACTOR SHALL PREPARE AND SUBMIT SIGNAGE AND APPROVAL PRIOR TO INSTALLATION.



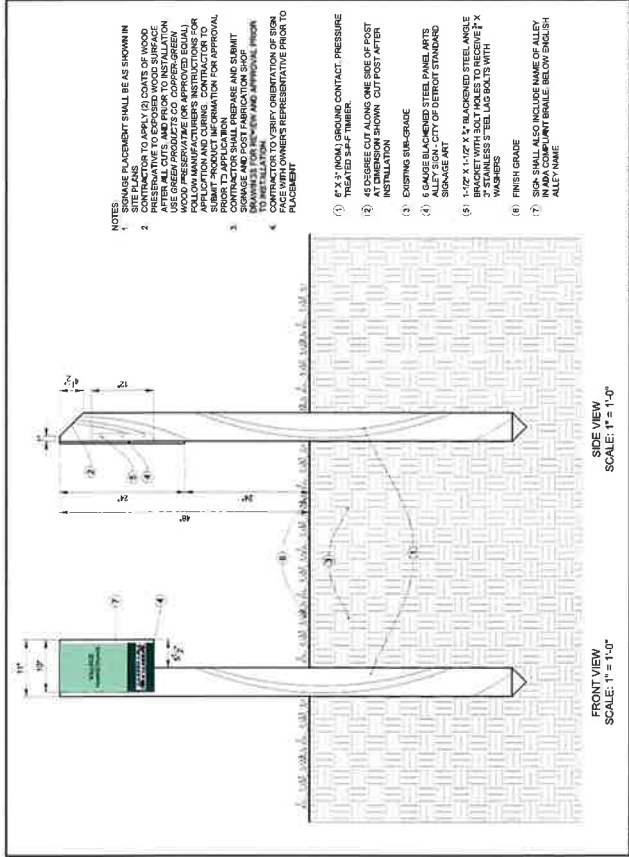
**ARTS ALLEY STANDARD SIGN STEEL POST SURFACE MOUNT**  
NET TO SCALE

06



**6 FT CHAIN LINK FENCE**  
NET TO SCALE

07

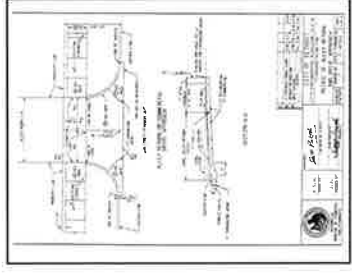
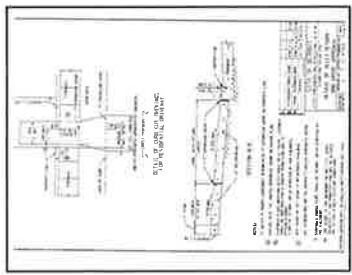
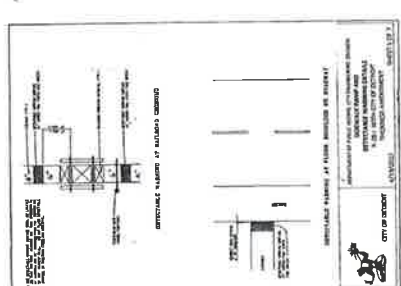
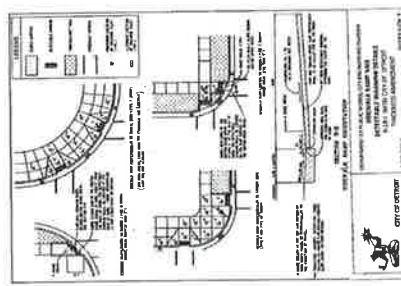
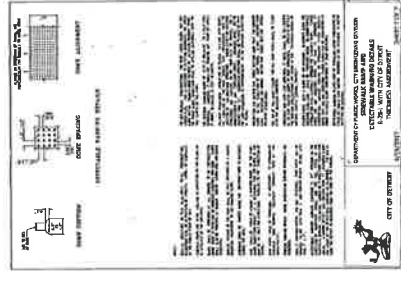
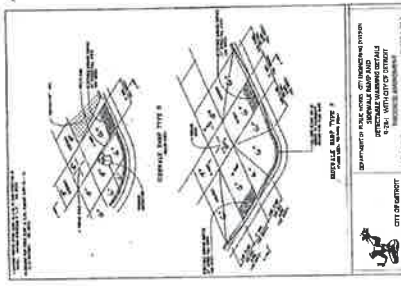
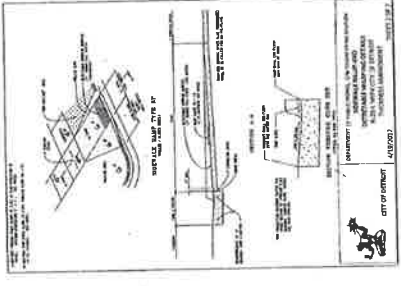
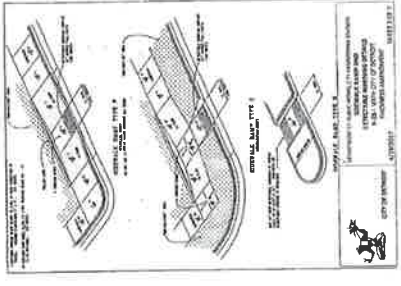
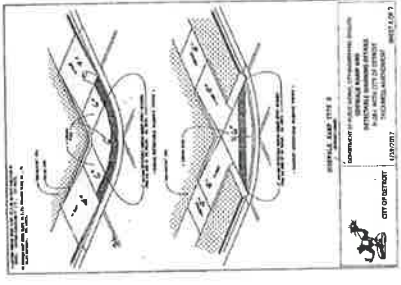


**WILCOX MARKET FENCE SIGN WOOD POST DIRECT BURY**  
NET TO SCALE

08

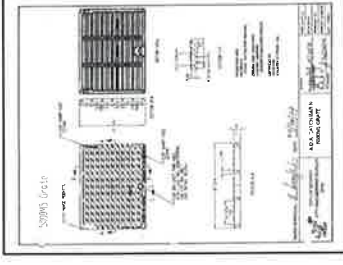
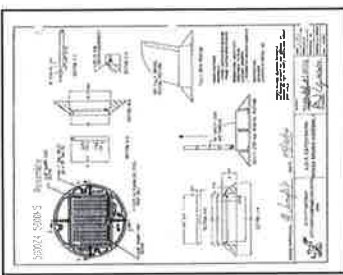
- NOTES:**
1. SIGNAGE PLACEMENT SHALL BE AS SHOWN IN SITE PLANS.
  2. CONTRACTOR SHALL PREPARE AND SUBMIT SIGNAGE AND APPROVAL PRIOR TO INSTALLATION.
  3. CONTRACTOR SHALL PREPARE AND SUBMIT SIGNAGE AND APPROVAL PRIOR TO INSTALLATION.
  4. CONTRACTOR SHALL PREPARE AND SUBMIT SIGNAGE AND APPROVAL PRIOR TO INSTALLATION.
  5. CONTRACTOR SHALL PREPARE AND SUBMIT SIGNAGE AND APPROVAL PRIOR TO INSTALLATION.
  6. CONTRACTOR SHALL PREPARE AND SUBMIT SIGNAGE AND APPROVAL PRIOR TO INSTALLATION.
  7. CONTRACTOR SHALL PREPARE AND SUBMIT SIGNAGE AND APPROVAL PRIOR TO INSTALLATION.
  8. CONTRACTOR SHALL PREPARE AND SUBMIT SIGNAGE AND APPROVAL PRIOR TO INSTALLATION.
  9. CONTRACTOR SHALL PREPARE AND SUBMIT SIGNAGE AND APPROVAL PRIOR TO INSTALLATION.
  10. CONTRACTOR SHALL PREPARE AND SUBMIT SIGNAGE AND APPROVAL PRIOR TO INSTALLATION.



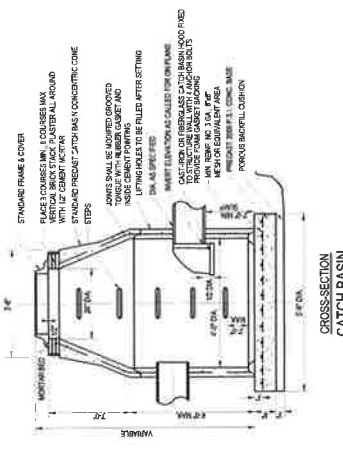


ALLEY DRIVEWAY - COO  
REF TO SHEET 11

SIDEWALK - COO  
REF TO SHEET 10



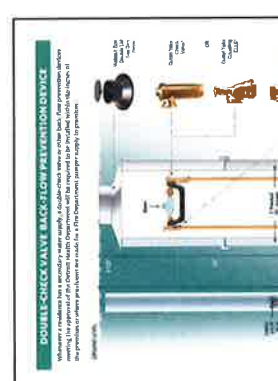
CATCH BASIN COVER - ADA  
NOT TO SCALE



TRAPPED CATCH BASIN  
NOT TO SCALE



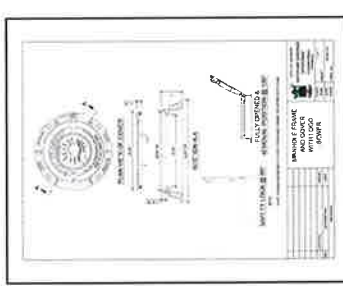
YARD INFILTRANT  
NOT TO SCALE



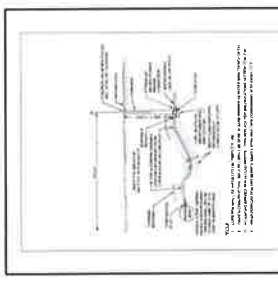
DOUBLE CHECK VALVE BACKFLOW PREVENTION DEVICE  
NOT TO SCALE



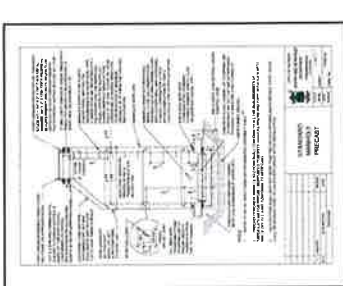
METER PIT DETAIL  
NOT TO SCALE



MANHOLE CASTING  
NOT TO SCALE



WATER SERVICE CONNECTION  
NOT TO SCALE



MANHOLE PRECAST  
NOT TO SCALE



SANITARY TRENCH  
NOT TO SCALE