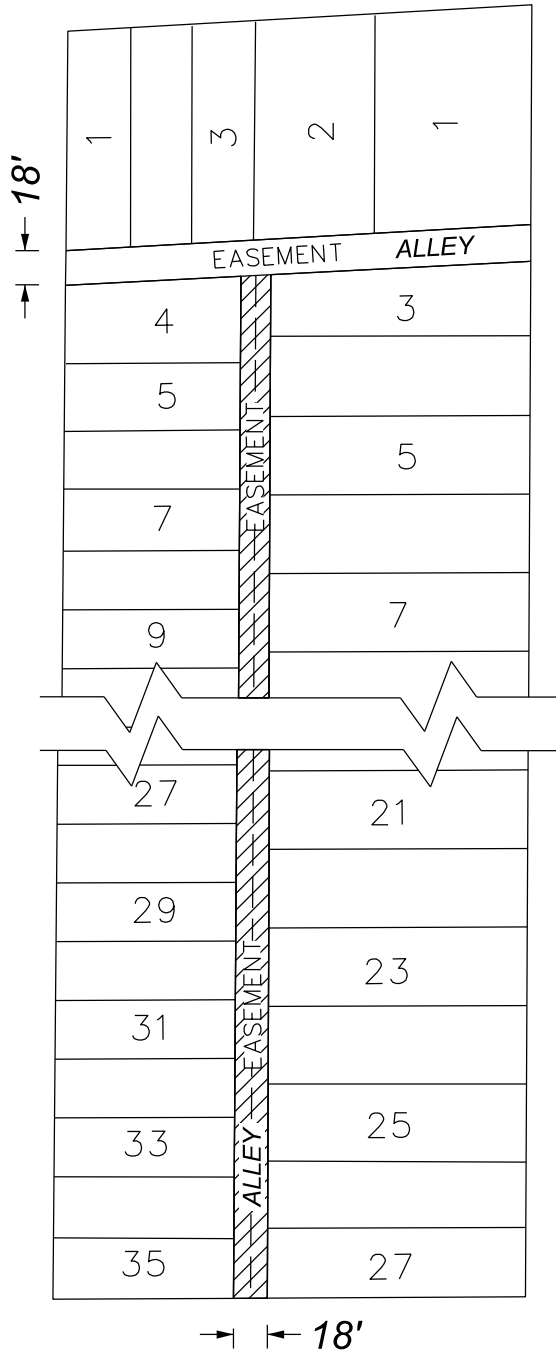




JEFFERSON AVE. 120 FT. WD.

NEWPORT AVE. 50 FT. WD.

LAKEWOOD AVE. 80 FT. WD.



FREUD ST. 60 FT. WD.

- REQUEST ENCROACHMENT
(NEW CONCRETE PAVEMENT, BOLLARDS, AND ASSOCIATED
WATER/POWER INFRASTRUCTURE IMPROVEMENTS)

(FOR OFFICE USE ONLY)

CARTO 62 B

B					
A					
DESCRIPTION	DRWN	CHKD	APPD	DATE	
REVISIONS					
DRAWN BY	TS	CHECKED	AP/LC		
DATE	05-30-2024	APPROVED	RW		

REQUEST ENCROACHMENT INTO
THE NORTH/SOUTH ALLEY, 18 FT. WD.
IN THE BLOCK BOUNDED BY
LAKEWOOD AVE., FREUD ST.,
NEWPORT AVE., AND JEFFERSON AVE.

CITY OF DETROIT
CITY ENGINEERING DIVISION
SURVEY BUREAU

JOB NO. 24-18
DRWG. NO. 01