

# City of Detroit

Janice M. Winfrey  
City Clerk

OFFICE OF THE CITY CLERK

Andre P. Gilbert II  
Deputy City Clerk

## DEPARTMENT PETITION REFERENCE COMMUNICATION

*To: The Department or Commission Listed Below*

*From: Janice M Winfrey, Detroit City Clerk*

---

The following petition is herewith referred to you for report and recommendation to the City Council.

In accordance with that body's directive, kindly return the same with your report in duplicate within four (4) weeks.

---

Petition No.	2024-137
Name of Petitioner	The Department of Public Works
Description of Petition	Please see request of proposed project which includes the activation of an existing alleyway for the creation of shared public spaces to celebrate neighborhoods and promote the installation of art.
Type of Petition	<b>Alley Vacation/ Encroachment/ Utility Vacation</b>
Submission Date	5/2/2024
Concerned Departments	Media Services, Buildings & Safety Engineering, Police Department, Fire Department, Municipal Parking Department, Transportation Department, Health Department; General Services Department,
Petitioner Contact	The Department of Public Works 313-224-3970



**CITY OF DETROIT  
DEPARTMENT OF PUBLIC WORKS  
CITY ENGINEERING DIVISION**

**COLEMAN A. YOUNG MUNICIPAL CENTER  
2 WOODWARD AVE. SUITE 601  
DETROIT, MICHIGAN 48226  
PHONE: (313) 224-3949 TTY: 711  
WWW.DETROITMI.GOV**

---

To: Clerk's Office  
From: The Department of Public Works  
City Engineering Division  
MapsandRecordsBureau@DetroitMI.Gov  
(313) 224-3970

Petitioner:  
Buildings, Safety Engineering, and Environmental Department  
2 Woodward Ave, Suite 601  
Detroit, MI 48226

On behalf of the above-mentioned petitioner the Department of Public Works: City Engineering Division is submitting a petition request for the action below. The petitioner has received a project consultation from the Department of Public Works: City Engineering Division and has been advised the following:

Type of action recommended:

The proposed project includes the activation of an existing alleyway for the creation of shared public spaces to celebrate neighborhoods and promote the installation of art. The improvements noted within this submittal include the infrastructure elements to renew the alleys; making them accessible and safe for pedestrians.

The scope of work necessary for this project will include the following:

- Alley vegetation clearing and disposal of debris
- Drainage improvements with the installation of new catch basins and adjusting existing manholes to grade.
- Removal and replacement of alley pavements with a new decorative concrete pavement.
- Installation of solar powered lighting.
- Installation of a DTE electrical service.

Raven Wright  
Supervisor of Maps and Records  
Department of Public Works  
City Engineering Division  
313-224-3985



**CITY OF DETROIT**  
**DEPARTMENT OF PUBLIC WORKS**  
**CITY ENGINEERING DIVISION**

**COLEMAN A. YOUNG MUNICIPAL CENTER**  
**2 WOODWARD AVE. SUITE 601**  
**DETROIT, MICHIGAN 48226**  
**PHONE: (313) 224-3949 TTY: 711**  
**WWW.DETROITMI.GOV**



February 20, 2024

Buildings, Safety Engineering, and Environmental Department  
2 Woodward Ave, Suite 601  
Detroit, MI 48226

**Re:** E-Plans Review for the Arts Alleys Project  
Yellow Brick Road Arts Alley

On behalf of the City of Detroit's Office of Art, Culture, and Entrepreneurship (ACE), OHM Advisors is submitting construction plans for review and approval by the various City Departments. The proposed project includes the activation of an existing alleyway for the creation of shared public spaces to celebrate neighborhoods and promote the installation of art. The improvements noted within this submittal include the infrastructure elements to renew the alleys; making them accessible and safe for pedestrians.

The scope of work necessary for this project will include the following:

- Alley vegetation clearing and disposal of debris
- Drainage improvements with the installation of new catch basins and adjusting existing manholes to grade.
- Removal and replacement of alley pavements with a new decorative concrete pavement.
- Installation of solar powered lighting.
- Installation of a DTE electrical service.

### Utility Easement Usage

In the early 2000s, the existing public alley bounded by Freud Street on the south and Newport and Lakeport streets on the west and east was vacated as part of City redevelopment efforts. Since that time, the alley ownership has reverted to adjacent private property owners. The property on the west side of the alley is held currently by the City of Detroit Planning and Development Department. As part of the project design phase, ACE gained approval to utilize the rear of these parcels for the construction of a pedestrian pathway and associated art installations.

The parcels along the east side of the alley are owned by private property owners. Through community engagement, it has been determined that the failed pavements will be removed and replaced with ground cover and turf grass. To help ensure that utility companies have continued access through this space, the fencing will be held at the former property line.

This property will remain under private ownership under this arrangement. The PDD owned land will be protected through the recoding of pedestrian ingress/egress easement. This will overlap the existing public utility easement which was recorded during the prior alley vacation.

**OHM Advisors**  
1145 GRISWOLD STREET, SUITE 200  
DETROIT, MICHIGAN 48226

T 313 481 1250

[OHM-Advisors.com](http://OHM-Advisors.com)



**CITY OF DETROIT  
DEPARTMENT OF PUBLIC WORKS  
CITY ENGINEERING DIVISION**

**COLEMAN A. YOUNG MUNICIPAL CENTER  
2 WOODWARD AVE. SUITE 601  
DETROIT, MICHIGAN 48226  
PHONE: (313) 224-3949 TTY: 711  
[WWW.DETROITMI.GOV](http://WWW.DETROITMI.GOV)**

---



Yellow Brick Roads Arts Alley: E-Plans Submission Cover Letter  
February 20, 2024  
Page 2 of 2

## Adjacent Improvements

The plans depict improvements on a number of adjacent properties. Specifically, there will be fencing improvements to better define the alleyway.

## Prior Development Team Meeting

This submission is a continuation of the process initiated last year that culminated in a Preliminary Plan Review meeting, held on November 20, 2023. The plans have included several changes from this initial plan set:

1. The work within the northern east-west alley parallel to E Jefferson Avenue has been removed. The removes any work from the existing historical district.
2. The existing failed concrete will be removed. As noted earlier, per resident feedback, this space will be retained as lawn space. We note that this is located above a DWSD sewer. Per direction received at the November 20, 2023, meeting, we understand this to be an allowable restoration given that the land is privately-owned. This green space will not be utilized for drainage as the proposed concrete pathway located to the west will include catch basins to directly manage any runoff generated from the surface.

## Questions and Review

The Arts Alley Projects are funded as part of the City of Detroit's ARPA Allotment which requires that the improvements are obligated no later than December 31, 2024. ACF appreciates any assistance in expediting reviews. If there are any questions, please contact me with any questions at 313-481-1253 or via e-mail at [Zachary.hampton@ohm-advisors.com](mailto:Zachary.hampton@ohm-advisors.com).

Sincerely,  
OHM Advisors

Zachary Hampton, P.E.  
Project Manager

cc: File



**CITY OF DETROIT**  
**DEPARTMENT OF PUBLIC WORKS**  
**CITY ENGINEERING DIVISION**

**COLEMAN A. YOUNG MUNICIPAL CENTER**  
**2 WOODWARD AVE. SUITE 601**  
**DETROIT, MICHIGAN 48226**  
**PHONE: (313) 224-3949 TTY: 711**  
**WWW.DETROITMI.GOV**

# CITY OF DETROIT

## ARTS ALLEY - PHASE II

YELLOW BRICK ROAD  
 WAYNE COUNTY, MICHIGAN



AREA LOCATION MAP  
 01/19/24



VICINITY MAP  
 01/19/24

**OWNER:** DETROIT WATER DEPARTMENT  
 1000 W. WOODWARD AVENUE  
 DETROIT, MI 48226  
 (313) 224-3949

**DESIGNER:** ONE ENERGY, INC.  
 ONE ENERGY PLAZA, 518 56  
 DETROIT, MI 48226  
 PHONE: (313) 224-3949  
 FAX: (313) 224-3949  
 WWW.ONEENERGY.COM



**PROJECT MANAGER:**  
 KENNETH W. HALL  
 130 WOODWARD STREET  
 DETROIT, MI 48226  
 PHONE: (313) 224-3949  
 EMAIL: KEN.HALL@DETROITWATER.COM

**PROJECT ENGINEER:**  
 ONE ENERGY PLAZA, 518 56  
 DETROIT, MI 48226  
 PHONE: (313) 224-3949  
 EMAIL: DAVE.ECCALAPPO@ONEENERGY.COM

**PROJECT ARCHITECT:**  
 3115 CANTON AVENUE  
 5TH FLOOR  
 DETROIT, MI 48226  
 CONTACT: KEVIN.HALL@ONEENERGY.COM

**SHEET INDEX**

NO.	DESCRIPTION	DATE
1	ARTS ALLEY - PHASE II	01/19/24
2	ARTS ALLEY - PHASE II	01/19/24
3	ARTS ALLEY - PHASE II	01/19/24
4	ARTS ALLEY - PHASE II	01/19/24
5	ARTS ALLEY - PHASE II	01/19/24
6	ARTS ALLEY - PHASE II	01/19/24
7	ARTS ALLEY - PHASE II	01/19/24
8	ARTS ALLEY - PHASE II	01/19/24
9	ARTS ALLEY - PHASE II	01/19/24
10	ARTS ALLEY - PHASE II	01/19/24
11	ARTS ALLEY - PHASE II	01/19/24
12	ARTS ALLEY - PHASE II	01/19/24
13	ARTS ALLEY - PHASE II	01/19/24
14	ARTS ALLEY - PHASE II	01/19/24
15	ARTS ALLEY - PHASE II	01/19/24
16	ARTS ALLEY - PHASE II	01/19/24
17	ARTS ALLEY - PHASE II	01/19/24
18	ARTS ALLEY - PHASE II	01/19/24
19	ARTS ALLEY - PHASE II	01/19/24
20	ARTS ALLEY - PHASE II	01/19/24
21	ARTS ALLEY - PHASE II	01/19/24
22	ARTS ALLEY - PHASE II	01/19/24
23	ARTS ALLEY - PHASE II	01/19/24
24	ARTS ALLEY - PHASE II	01/19/24
25	ARTS ALLEY - PHASE II	01/19/24
26	ARTS ALLEY - PHASE II	01/19/24
27	ARTS ALLEY - PHASE II	01/19/24
28	ARTS ALLEY - PHASE II	01/19/24
29	ARTS ALLEY - PHASE II	01/19/24
30	ARTS ALLEY - PHASE II	01/19/24
31	ARTS ALLEY - PHASE II	01/19/24
32	ARTS ALLEY - PHASE II	01/19/24
33	ARTS ALLEY - PHASE II	01/19/24
34	ARTS ALLEY - PHASE II	01/19/24
35	ARTS ALLEY - PHASE II	01/19/24
36	ARTS ALLEY - PHASE II	01/19/24
37	ARTS ALLEY - PHASE II	01/19/24
38	ARTS ALLEY - PHASE II	01/19/24
39	ARTS ALLEY - PHASE II	01/19/24
40	ARTS ALLEY - PHASE II	01/19/24
41	ARTS ALLEY - PHASE II	01/19/24
42	ARTS ALLEY - PHASE II	01/19/24
43	ARTS ALLEY - PHASE II	01/19/24
44	ARTS ALLEY - PHASE II	01/19/24
45	ARTS ALLEY - PHASE II	01/19/24
46	ARTS ALLEY - PHASE II	01/19/24
47	ARTS ALLEY - PHASE II	01/19/24
48	ARTS ALLEY - PHASE II	01/19/24
49	ARTS ALLEY - PHASE II	01/19/24
50	ARTS ALLEY - PHASE II	01/19/24

**100% PLANS**  
 OHM PROJECT NO. 7506-23-0010  
 DATE/ISSUE: 01/19/24





**CITY OF DETROIT  
DEPARTMENT OF PUBLIC WORKS  
CITY ENGINEERING DIVISION**

**COLEMAN A. YOUNG MUNICIPAL CENTER  
2 WOODWARD AVE. SUITE 601  
DETROIT, MICHIGAN 48226  
PHONE: (313) 224-3949 TTY: 711  
[WWW.DETROITMI.GOV](http://WWW.DETROITMI.GOV)**

---



CITY OF DETROIT  
 DEPARTMENT OF PUBLIC WORKS  
 CITY ENGINEERING DIVISION

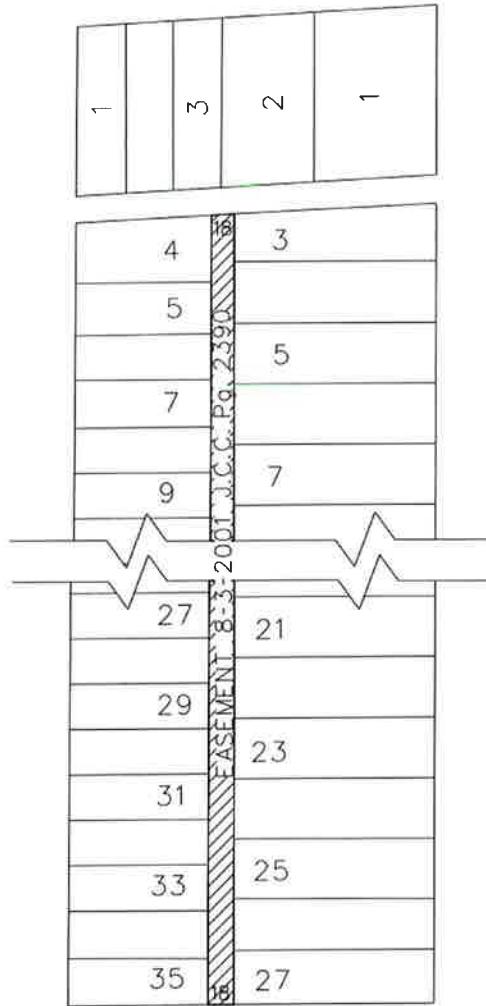
COLEMAN A. YOUNG MUNICIPAL CENTER  
 2 WOODWARD AVE. SUITE 601  
 DETROIT, MICHIGAN 48226  
 PHONE: (313) 224-3949 TTY: 711  
 WWW.DETROITMI.GOV

MAP-24-18

JEFFERSON AVE. 120 FT. WD.



NEWPORT AVE. 50 FT. WD.



LAKWOOD AVE. 80 FT. WD.

FREUD ST. 60 FT. WD.



- REQUEST ENCROACHMENT (NEW CONCRETE PAVEMENT, BENCHING, BOLLARDS, SIGNS, ART PANELS, KIOSK, ASSOCIATED STORM AND LANDSCAPING)  
 (FOR OFFICE USE ONLY)

CARTO 62 B

<b>B</b>					
<b>A</b>					
DESCRIPTION					
REVISIONS					
DRAWN BY	TS	CHECKED	LC	APPR	DATE
DATE	2-23-2024	APPROVED	JD		

REQUEST ENCROACHMENT INTO THE NORTH/SOUTH ALLEY, 18 FT. WD. IN THE BLOCK BOUND BY LAKWOOD AVE, FREUD ST, NEWPORT AVE, AND JEFFERSON AVE.

CITY OF DETROIT	
CITY ENGINEERING DIVISION	
SURVEY BUREAU	
JOB NO.	24-18
DRWG. NO.	





**CITY OF DETROIT  
DEPARTMENT OF PUBLIC WORKS  
CITY ENGINEERING DIVISION**

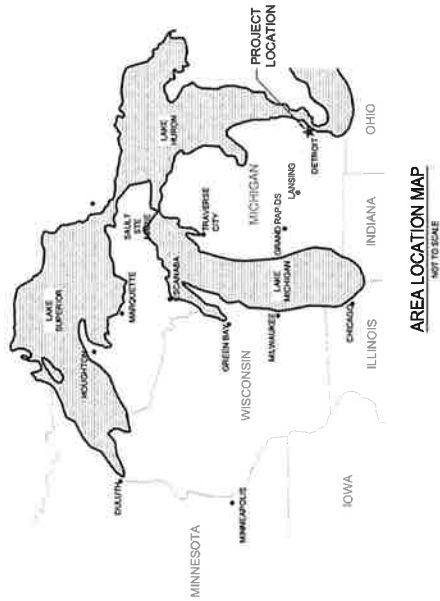
**COLEMAN A. YOUNG MUNICIPAL CENTER  
2 WOODWARD AVE. SUITE 601  
DETROIT, MICHIGAN 48226  
PHONE: (313) 224-3949 TTY: 711  
[WWW.DETROITMI.GOV](http://WWW.DETROITMI.GOV)**

---

# CITY OF DETROIT

## ARTS ALLEY - PHASE II

YELLOW BRICK ROAD  
WAYNE COUNTY, MICHIGAN



UTILITY PROVIDERS

SANITARY/WATER  
DETROIT WATER AND SEWERAGE  
735 BANCROFT STREET  
DETROIT, MI 48226-8000  
PHONE: 313-224-5000  
E-MAIL: KENOSHIA@DETROITMI.GOV

ELECTRICITY/GAS  
DETROIT Edison  
11000 Woodward Ave., 5th Fl.  
Detroit, MI 48202  
PHONE: 313-224-5633  
E-MAIL: DESIGN\_MISSED@DETROITMI.GOV

TELEPHONE/CABLE  
ATT  
54 N MILL ST., 4TH FLOOR  
PORTAGE, MI 48242  
PHONE: 800-441-1111  
CONTACT: HEATHER VALE - HVALE@ATT.NET

TOWN OF  
GENERAL SERVICES DEPARTMENT  
CITY OF DETROIT  
11400 W. ANTOUR  
311 ONE STOP

BACONER  
640 ANDROS, INC.  
CANTON, OHIO 44705  
11400 W. ANTOUR, 311 ONE STOP  
DETROIT, MICHIGAN 48226  
PHONE: 313-224-5000



**100% PLANS**  
**OHM PROJECT NO. 7508-23-0010**  
**DATE/ISSUE: 01/19/24**



**SHEET INDEX**

REGION NO. 1  
● NEW SHEET ○ NOT PRINTED ▲ REVISED

SHEET	TITLE
101	ARTS ALLEY - PHASE II - GENERAL NOTES
102	ARTS ALLEY - PHASE II - CIVIL PLAN
103	ARTS ALLEY - PHASE II - ELECTRICAL PLAN
104	ARTS ALLEY - PHASE II - MECHANICAL PLAN
105	ARTS ALLEY - PHASE II - PLUMBING PLAN
106	ARTS ALLEY - PHASE II - STRUCTURAL PLAN
107	ARTS ALLEY - PHASE II - LANDSCAPE PLAN
108	ARTS ALLEY - PHASE II - SIGNAGE PLAN
109	ARTS ALLEY - PHASE II - UTILITIES PLAN
110	ARTS ALLEY - PHASE II - CONSTRUCTION DETAILS



# GENERAL NOTES

## UTILITIES

ALL UNDERGROUND UTILITY NOTIFICATION SHALL BE IN ACCORDANCE WITH THE PROVISIONS OF THE MICHIGAN UTILITY LOCATING ACT (MCL 207.1101-207.1109) AND THE MICHIGAN UTILITY LOCATING REGULATIONS (MIR 207.1101-207.1109) AT 811 OR 800-447-1111 OR VIA THE WEB AT EITHER BLOCATE (MIRSDIG.ORG) FOR SINGLE ADDRESS OR THE MICHIGAN UTILITY LOCATING ACT (MCL 207.1101-207.1109) AND THE MICHIGAN UTILITY LOCATING REGULATIONS (MIR 207.1101-207.1109) FOR MULTIPLE ADDRESSES INCLUDING TRENCHES AND TRENCHES.

THE EXISTING UTILITIES SHOWN ON THESE PLANS REPRESENT THE BEST INFORMATION AVAILABLE TO THE ENGINEER. THE CONTRACTOR SHALL VERIFY THE LOCATION AND DEPTH OF ALL UTILITIES PRIOR TO CONSTRUCTION. THE CONTRACTOR SHALL BE RESPONSIBLE FOR THE ACCURACY AND LOCATION OF EXISTING UTILITIES.

## BENCHMARK ELEVATIONS

BENCHMARK ELEVATIONS SHOWN ON THESE PLANS ARE BASED ON NAVD 88.

## PROPERTY CORNERS

ANY PROPERTY CORNERS WITHIN THE FRONT OR BACK SLOPE SHALL BE STAKED AND THE CONTRACTOR SHALL BE RESPONSIBLE FOR THE ACCURACY AND LOCATION OF ALL PROPERTY CORNERS. THE CONTRACTOR SHALL BE RESPONSIBLE FOR THE ACCURACY AND LOCATION OF ALL PROPERTY CORNERS. THE CONTRACTOR SHALL BE RESPONSIBLE FOR THE ACCURACY AND LOCATION OF ALL PROPERTY CORNERS. THE CONTRACTOR SHALL BE RESPONSIBLE FOR THE ACCURACY AND LOCATION OF ALL PROPERTY CORNERS.

## UTILITY NOTES

1. UNLESS SPECIFICALLY NOTED FOR REMOVAL ON THE CONSTRUCTION PLANS ALL UTILITIES SHALL BE PROTECTED AND REMOVED OR REPLACED AT THE CONTRACTOR'S EXPENSE. INCIDENTAL TO THE COST OF CONSTRUCTION AT NO EXPENSE TO THE OWNER.

2. EXISTING WATER MAINS, GAS MAINS AND UNDERGROUND TELEPHONE, ELECTRIC AND SANITARY SEWERS SHALL BE PROTECTED AND REMOVED OR REPLACED AT THE CONTRACTOR'S EXPENSE. THE CONTRACTOR SHALL BE RESPONSIBLE FOR THE ACCURACY AND LOCATION OF ALL UTILITIES. THE CONTRACTOR SHALL BE RESPONSIBLE FOR THE ACCURACY AND LOCATION OF ALL UTILITIES. THE CONTRACTOR SHALL BE RESPONSIBLE FOR THE ACCURACY AND LOCATION OF ALL UTILITIES. THE CONTRACTOR SHALL BE RESPONSIBLE FOR THE ACCURACY AND LOCATION OF ALL UTILITIES.

3. THE CONTRACTOR SHALL PROTECT EXISTING STORM WATER MAIN, COMBINED AND SANITARY SEWERS IN A MANNER ACCEPTABLE TO THE ENGINEER DURING THE PROPOSED CONSTRUCTION. ANY UTILITY WHICH IS TO REMAIN IN SERVICE SHALL BE PROTECTED AND REMOVED OR REPLACED AT THE CONTRACTOR'S EXPENSE. THE CONTRACTOR SHALL BE RESPONSIBLE FOR THE ACCURACY AND LOCATION OF ALL UTILITIES. THE CONTRACTOR SHALL BE RESPONSIBLE FOR THE ACCURACY AND LOCATION OF ALL UTILITIES.

4. PRIOR TO CONSTRUCTION THE CONTRACTOR SHALL EXPOSE EXISTING UTILITIES AT POINTS OF POSSIBLE CONFLICT SO THAT THESE CONFLICTS CAN BE RESOLVED.

5. CONTRACTOR TO COORDINATE ALL EXISTING GAS MAIN AND SERVICE LEAD CONFLICTS WITH UTE GAS AT LEAST 3 WORKING DAYS PRIOR TO RELOCATION. PLEASE CONTACT BUREAU OF PUBLIC UTILITIES (BPU) TO SCHEDULE RELOCATION.

6. SEWER PIPE WITHIN A 11' INFLUENCE OF THE ROAD SHALL BE BACKFILLED WITH MUD CLASS II SAND SEWERS OUTSIDE OF THE ROAD INFLUENCE MAY BE BACKFILLED WITH CLEAN, JOB EXCAVATED MATERIAL.

7. ALL STORM SEWER CONSTRUCTED FOR THIS PROJECT SHALL BE CLASS IV CII REINFORCED CONCRETE UNLESS NOTED OTHERWISE ON THE PLANS.

## TRASH SERVICES

DURING CONSTRUCTION THE CONTRACTOR SHALL WORK TO MAINTAIN ACCESS TO TRASH PICKUP AREAS WHENEVER POSSIBLE. IF THIS IS NOT POSSIBLE DUE TO ACTIVE CONSTRUCTION THE CONTRACTOR SHALL ARRANGE FOR AN ALTERNATIVE PICKUP LOCATION AT NO ADDITIONAL COST TO THE OWNER.

## WORK ON PRIVATE PROPERTY

AS PART OF THIS PROJECT, WORK WILL BE REQUIRED ON PRIVATELY OWNED PROPERTY. BEFORE ANY WORK IS COMMENCED ON PRIVATE PROPERTY, IT IS THE RESPONSIBILITY OF THE CONTRACTOR TO OBTAIN THE NECESSARY PERMISSIONS FROM THE PROPERTY OWNER WHICH WILL BE OBTAINED BY ACE. THE CONTRACTOR SHALL NOT CONTACT THE PROPERTY OWNER DIRECTLY UNLESS TOLD TO DO SO BY ACE. WHILE WORK IS IN PROGRESS, THE CONTRACTOR SHALL BE RESPONSIBLE FOR THE PROTECTION OF UNIMPERFED AND WORK PRODUCT LEFT IN A SAFE MANNER AT THE CONCLUSION OF THE WORK DAY. ONCE WORK IS COMPLETE, THE CONTRACTOR SHALL NOTIFY ACE.

## SAWCUTS

THE CONTRACTOR SHALL SAWCUT FULL DEPTH THE EXISTING CONCRETE AND/OR REBAR HEAVY AND LIGHT SAWCUTS TO THE EXISTING PAVEMENT OR DRIVEWAY AS REQUIRED AND DIRECTED. THIS WORK WILL NOT BE PAID FOR SEPARATELY, BUT WILL BE INCLUDED IN THE CONTRACT UNIT PRICE BID FOR OTHER REMOVAL ITEMS.

## OPEN EXCAVATIONS

THE BACKFILLING OF PROTECTIVE FENCINGS AROUND ALL OPEN EXCAVATIONS IS REQUIRED. THIS WILL NOT BE PAID FOR SEPARATELY, BUT WILL BE CONSIDERED AS HAVING BEEN INCLUDED IN THE CONTRACT UNIT PRICE BID FOR MOBILIZATION.

## REMOVING PAVEMENTS

THE CONTRACTOR SHALL CONDUCT PAVEMENT REMOVAL OPERATIONS SO THAT THE STREETS AND DRIVEWAYS ARE REMOVED IMMEDIATELY AHEAD OF THE GRADING OPERATIONS IN ORDER THAT THE STREETS AND DRIVEWAYS MAY BE OPENED TO THE PUBLIC AS SOON AS POSSIBLE. THE CONTRACTOR SHALL BE RESPONSIBLE FOR THE PROTECTION OF ALL UTILITIES AND THE REMOVAL OF ALL DEBRIS FROM THE PROJECT SITE.

## PAVEMENT MARKINGS

PAVEMENT MARKINGS SHALL BE WITNESSED AND REPLACED IN AND WHEN IMPACTED BY THE WORK. IN THE EVENT THAT ANY MARKINGS SHALL BE REPLACED BY THE CONTRACTOR ANY REPLACEMENT WITH PERMANENT MARKINGS AT NO ADDITIONAL EXPENSE TO THE OWNER.

## PIPE MATERIAL

UNLESS OTHERWISE NOTED, ALL STORM SEWER SHALL BE CLASS IV CII REINFORCED CONCRETE.

## MISCELLANEOUS

ALL UTILITIES SHALL BE PROTECTED AND REMOVED OR REPLACED AT THE CONTRACTOR'S EXPENSE. THE CONTRACTOR SHALL BE RESPONSIBLE FOR THE ACCURACY AND LOCATION OF ALL UTILITIES. THE CONTRACTOR SHALL BE RESPONSIBLE FOR THE ACCURACY AND LOCATION OF ALL UTILITIES.

1. UNLESS SPECIFICALLY NOTED FOR REMOVAL ON THE CONSTRUCTION PLANS ALL UTILITIES SHALL BE PROTECTED AND REMOVED OR REPLACED AT THE CONTRACTOR'S EXPENSE. INCIDENTAL TO THE COST OF CONSTRUCTION AT NO EXPENSE TO THE OWNER.

2. EXISTING WATER MAINS, GAS MAINS AND UNDERGROUND TELEPHONE, ELECTRIC AND SANITARY SEWERS SHALL BE PROTECTED AND REMOVED OR REPLACED AT THE CONTRACTOR'S EXPENSE. THE CONTRACTOR SHALL BE RESPONSIBLE FOR THE ACCURACY AND LOCATION OF ALL UTILITIES. THE CONTRACTOR SHALL BE RESPONSIBLE FOR THE ACCURACY AND LOCATION OF ALL UTILITIES.

3. THE CONTRACTOR SHALL PROTECT EXISTING STORM WATER MAIN, COMBINED AND SANITARY SEWERS IN A MANNER ACCEPTABLE TO THE ENGINEER DURING THE PROPOSED CONSTRUCTION. ANY UTILITY WHICH IS TO REMAIN IN SERVICE SHALL BE PROTECTED AND REMOVED OR REPLACED AT THE CONTRACTOR'S EXPENSE. THE CONTRACTOR SHALL BE RESPONSIBLE FOR THE ACCURACY AND LOCATION OF ALL UTILITIES. THE CONTRACTOR SHALL BE RESPONSIBLE FOR THE ACCURACY AND LOCATION OF ALL UTILITIES.

4. PRIOR TO CONSTRUCTION THE CONTRACTOR SHALL EXPOSE EXISTING UTILITIES AT POINTS OF POSSIBLE CONFLICT SO THAT THESE CONFLICTS CAN BE RESOLVED.

5. CONTRACTOR TO COORDINATE ALL EXISTING GAS MAIN AND SERVICE LEAD CONFLICTS WITH UTE GAS AT LEAST 3 WORKING DAYS PRIOR TO RELOCATION. PLEASE CONTACT BUREAU OF PUBLIC UTILITIES (BPU) TO SCHEDULE RELOCATION.

6. SEWER PIPE WITHIN A 11' INFLUENCE OF THE ROAD SHALL BE BACKFILLED WITH MUD CLASS II SAND SEWERS OUTSIDE OF THE ROAD INFLUENCE MAY BE BACKFILLED WITH CLEAN, JOB EXCAVATED MATERIAL.

7. ALL STORM SEWER CONSTRUCTED FOR THIS PROJECT SHALL BE CLASS IV CII REINFORCED CONCRETE UNLESS NOTED OTHERWISE ON THE PLANS.

## SOILS AND EARTHWORK

SOIL INVESTIGATIONS HAVE NOT BEEN PERFORMED FOR THIS PROJECT. PRESUMPTIVE LOAD-BEARING VALUES TO BE IN ACCORDANCE WITH MICHIGAN BUILDING CODE TABLE 1608.3 UNLESS NOTED OTHERWISE. FOUNDATION DESIGN SHALL BE IN ACCORDANCE WITH MICHIGAN BUILDING CODE TABLE 1608.3. CONTRACTOR SHALL VERIFY SOIL BEARING CAPACITY PRIOR TO CONSTRUCTION. SPECIAL DESIGN AND CONSTRUCTION PROVISIONS FOR THIS PROJECT'S FOUNDATIONS.

1. INCLUDE IN THE WORK PROVIDING ALL EQUIPMENT, MATERIALS, AND QUALIFIED LABOR NECESSARY FOR EXCAVATION, SHORING, Dewatering SYSTEMS, BACKFILL, AND COMPACTION OF SOILS AS REQUIRED TO CONSTRUCT STRUCTURES TO THE LINE AND GRADE AS SHOWN ON THE PLANS. CONTRACTOR SHALL BE RESPONSIBLE FOR THE ACCURACY AND LOCATION OF ALL UTILITIES. THE CONTRACTOR SHALL BE RESPONSIBLE FOR THE ACCURACY AND LOCATION OF ALL UTILITIES.

2. EXCAVATING IN THE VICINITY OF UTILITY LINES ALL "MISS DIG" PARTICIPATING MEMBERS WILL THIS BE ROUTINELY NOTIFIED. THIS DOES NOT RELIEVE THE CONTRACTOR OF THE RESPONSIBILITY OF NOTIFYING OWNERS WHO MAY NOT BE NOTIFIED BY THE ENGINEER.

3. EXCAVATE TO ELEVATIONS AND DIMENSIONS SHOWN ON THE PLANS WITHIN A TOLERANCE OF 1/8" IN FEET. EXCAVATE BY HAND TO FINAL GRADE FOR FOOTINGS.

4. NOTIFY THE ENGINEER FOR AN INSPECTION WHEN THE EXCAVATION HAS REACHED THE SUBGRADE ELEVATION. EXCAVATE AND REPLACE SUCH MATERIALS DIRECTED BY ENGINEER.

5. UNSATISFACTORY SOIL MATERIALS ARE DEFINED AS GRANULAR MATERIALS CLASSIFIED AS GW, GP, GM, SW, SP, SW-SM, SP-SM, OR SM-PT. THE UNIFIED SOILS CLASSIFICATION SYSTEM SHALL BE USED TO CLASSIFY SOILS. UNSATISFACTORY SOIL MATERIALS ARE DEFINED AS GRANULAR MATERIALS CLASSIFIED AS GW, GP, GM, SW, SP, SW-SM, SP-SM, OR SM-PT. THE UNIFIED SOILS CLASSIFICATION SYSTEM SHALL BE USED TO CLASSIFY SOILS.

6. UNSATISFACTORY SOIL MATERIALS ARE SOILS CLASSIFIED AS GC, SW-SC, SP-SC, SC, ML, CL, CH, CL, OL, AND PT BY THE UNIFIED SOIL CLASSIFICATION SYSTEM OR ANY ORGANIC MATERIAL, "MARK", IS AN UNSATISFACTORY SOIL MATERIAL. UNSATISFACTORY SOIL MATERIALS ARE SOILS CLASSIFIED AS GC, SW-SC, SP-SC, SC, ML, CL, CH, CL, OL, AND PT BY THE UNIFIED SOIL CLASSIFICATION SYSTEM OR ANY ORGANIC MATERIAL, "MARK", IS AN UNSATISFACTORY SOIL MATERIAL.

7. ENGINEER FILL AS SHOWN ON THE PLANS DO NOT BACKFILL WITH FROZEN MATERIALS. DO NOT PLACE ROCKS LARGER THAN 3" DIAMETER IN BACKFILL. COMPACT SOILS BELOW FOOTINGS TO A MINIMUM OF 95% OF THE MAXIMUM DENSITY AS DETERMINED BY MODIFIED PROCTOR. ASTM D1557.

8. ALL EXCAVATIONS SHALL BE PROTECTED AND REMOVED OR REPLACED AT THE CONTRACTOR'S EXPENSE. THE CONTRACTOR SHALL BE RESPONSIBLE FOR THE ACCURACY AND LOCATION OF ALL UTILITIES. THE CONTRACTOR SHALL BE RESPONSIBLE FOR THE ACCURACY AND LOCATION OF ALL UTILITIES.

## PLA COORDINATION

PLANS TO BE SUBMITTED WITH THE CONTRACT OR SHALL CONTACT PLA TO COORDINATE THE INSTALLATION OF UP TO THREE (3) SOLAR LIGHTS TO BE FREE STANDING, 100W EQUIVALENT (MINIMUM) FIXTURES.

CONTACT THE PUBLIC LIGHTING AUTHORITY AT (313) 324-8930.



livingLAB



REVISION	DATE	DESCRIPTION

PROJECT NUMBER	DATE	CLIENT NAME/NO.

CITY OF DETROIT  
ARTS ALLEY - PHASE II  
YELLOW BRICK ROAD  
GENERAL NOTES

PROJECT NO. 15-000000  
 SHEET NO. 15-000000-01  
 DATE: 08/11/2015

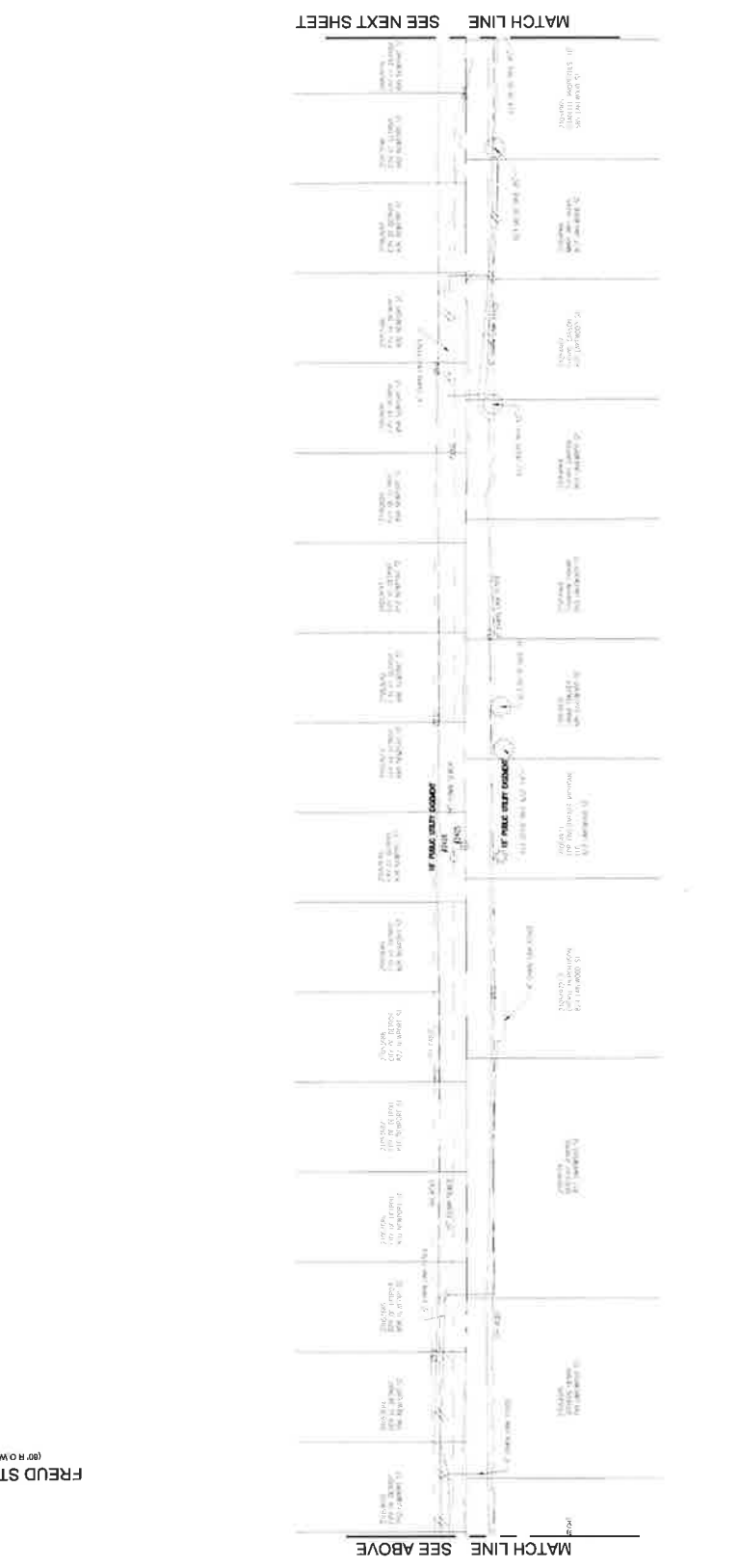
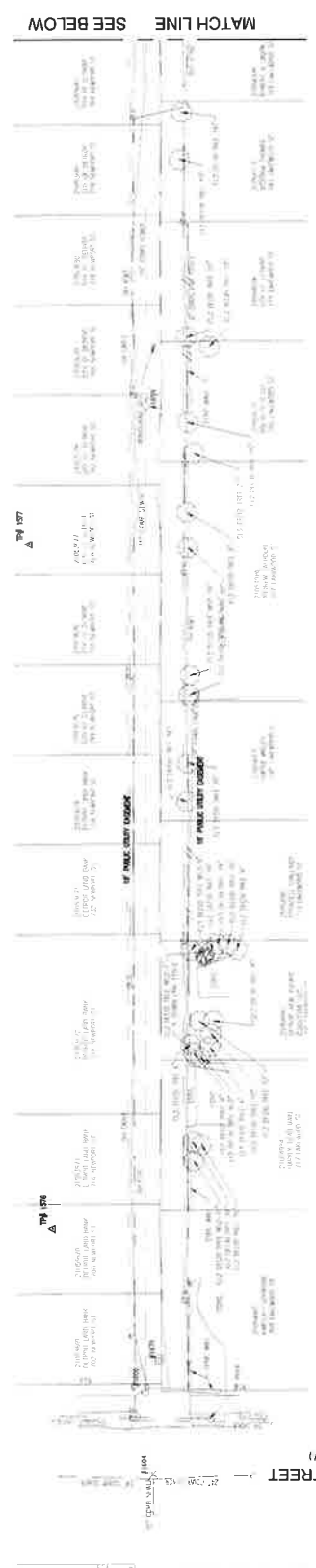
# YELLOW BRICK ROAD ARTS ALLEY



REVISION	NO.	DESCRIPTION	DATE

PROJECT NUMBER: 15-000000  
 SHEET NO.: 15-000000-01  
 CITY OF DETROIT  
 ARTS ALLEY - PHASE II  
 YELLOW BRICK ROAD  
 EXISTING CONDITIONS/TOPOGRAPHIC SURVEY

C4



**LEGEND**

- 1" = 1" (PROPOSED)
- 2" = 1" (EXISTING)
- 3" = 1" (PROPOSED)
- 4" = 1" (EXISTING)
- 5" = 1" (PROPOSED)
- 6" = 1" (EXISTING)
- 7" = 1" (PROPOSED)
- 8" = 1" (EXISTING)
- 9" = 1" (PROPOSED)
- 10" = 1" (EXISTING)

**NOTES**

1. ALL DIMENSIONS ARE IN FEET AND INCHES.
2. ALL ELEVATIONS ARE IN FEET ABOVE MEAN SEA LEVEL.
3. ALL UTILITIES SHOWN ARE BASED ON RECORD DRAWINGS AND FIELD SURVEY.
4. ALL UTILITIES SHALL BE DEEPENED TO THE SHOWN DEPTHS.
5. ALL UTILITIES SHALL BE COVERED WITH 18" CONCRETE CURBS AND 4" GRANULAR FILL.
6. ALL UTILITIES SHALL BE PROTECTED BY 18" CONCRETE CURBS AND 4" GRANULAR FILL.
7. ALL UTILITIES SHALL BE PROTECTED BY 18" CONCRETE CURBS AND 4" GRANULAR FILL.
8. ALL UTILITIES SHALL BE PROTECTED BY 18" CONCRETE CURBS AND 4" GRANULAR FILL.
9. ALL UTILITIES SHALL BE PROTECTED BY 18" CONCRETE CURBS AND 4" GRANULAR FILL.
10. ALL UTILITIES SHALL BE PROTECTED BY 18" CONCRETE CURBS AND 4" GRANULAR FILL.

**CONTACT INFORMATION**

811  
 Know what's below.  
 Call before you dig.

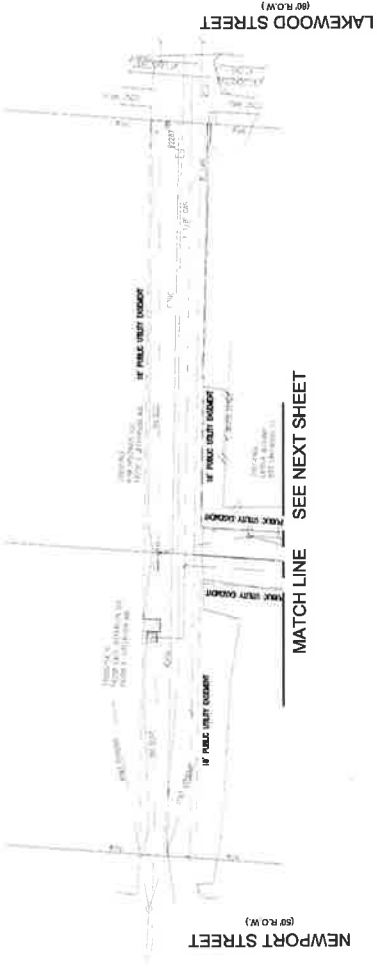


NO.	REVISION	DATE

PROJECT NUMBER: PM  
 DISCIPLINE: ZONING  
 CITY OF DETROIT  
 ARTS ALLEY - PHASE II  
 YELLOW BRICK ROAD  
 EXISTING CONDITIONS/TPOGRAPHIC SURVEY

C5

# YELLOW BRICK ROAD ARTS ALLEY



**LEGEND**

	ELEVATION
	DRIVE
	CHALLENGER
	TREE
	WALL
	CONCRETE
	ASPHALT
	GRAVEL
	SAND
	ROCK
	SECTION
	PROPERTY LINE
	FENCE
	STONE WALL
	CONCRETE WALL
	BRICK WALL
	METAL WALL
	TRUNK
	BRANCH
	LEAF
	TRUNK OVER

SEE PLAN AND/OR FIELD NOTES FOR DETAILS  
 (SEE PLAN AND/OR FIELD NOTES FOR DETAILS)



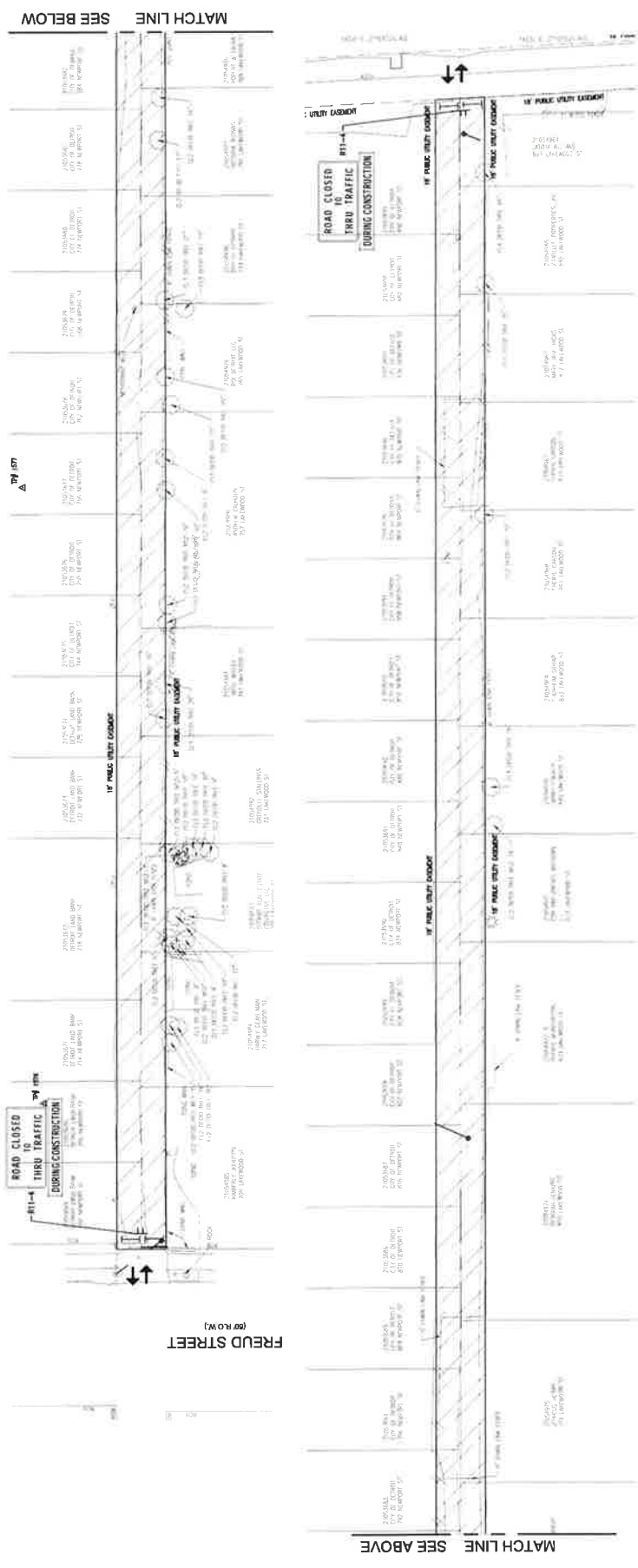
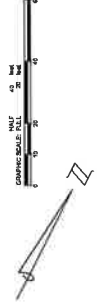


PROJECT NUMBER	PH	DISCIPLINE	CLIENT PROJECT
1906121001	ZM	STATION	
		REVISION	DESCRIPTION
		DATE	

ACCESS AND STAGING PLAN  
 YELLOW BRICK ROAD  
 ARTS ALLEY - PHASE II  
 CITY OF DETROIT

C6

# YELLOW BRICK ROAD ARTS ALLEY



SEE ABOVE

SEE BELOW

LEGEND

- ENTRY / EXIT
- WORKZONE
- TEMPORARY CONSTRUCTION
- BARBICUE TYPE II, HIGH INTENSITY, DOUBLE SIDED LIGHTED

### STAGING AND PROGRESS OF THE WORK

THE CONTRACTOR SHALL REVIEW ALL ASPECTS OF THE CONTRACT AND COORDINATE WORK SUCH THAT IMPACTS ARE LIMITED WHERE PRACTICABLE. THIS INCLUDES A METHODOLOGICAL PROGRESSION OF THE WORK THAT LIMITS IMPACTS TO STREETS. DURING CONSTRUCTION, IT IS THE CONTRACTOR'S RESPONSIBILITY TO ENSURE THAT THE ALLEY IS PROPERLY PROTECTED & SECURED. OPEN EXCAVATIONS SHALL BE BACKFILLED AND PROTECTED AT THE CONCLUSION OF THE WORK ON.

### STAGING AREAS

AS PART OF THIS PROJECT, STAGING AREAS MAY BE IDENTIFIED AND USED FOR THE STORAGE OF AGGREGATES, EXCAVATED MATERIALS, PIPE EQUIPMENT. ALL STAGING AREAS SHALL BE PER THE APPROVAL OF ACE. THE CONTRACTOR SHALL BE RESPONSIBLE FOR THE PROTECTION OF ALL STAGING AREAS FROM THE PUBLIC RIGHT OF WAY. STAGING AREAS SHALL NOT IMPEDER PEDESTRIAN OR VEHICULAR TRAFFIC PATTERNS. USE OF OTHER PROPERTY WITHIN OR ADJACENT TO THE PROJECT AREA WILL REQUIRE WRITTEN APPROVAL FROM THE PROPERTY OWNER. ALL STAGING AREAS SHALL BE RESTORED TO A CONDITION EQUIVALENT OR BETTER THAN CURRENT CONDITIONS.

### TRAFFIC CONTROL

THE CONTRACTOR SHALL BE RESPONSIBLE FOR ERECTING AND MAINTAINING ALL TRAFFIC CONTROL DEVICES. ALL TRAFFIC CONTROL DEVICES SHALL BE PER THE APPROVAL OF ACE. THE CONTRACTOR SHALL BE RESPONSIBLE FOR THE PROTECTION OF ALL TRAFFIC CONTROL DEVICES FROM THE PUBLIC RIGHT OF WAY. THE CONTRACTOR SHALL BE RESPONSIBLE TO ENSURE THAT ALL TRAFFIC CONTROL DEVICES ARE IN PLACE AND IN WORKING ORDER. IF WORK IS REQUIRED WITHIN THE ROAD ROW, CLOSURES PER MOST MARKING TYPICAL NO. 4110A (A.T.R.) SHALL BE IMPLEMENTED. IF WORK AFFECTS THE SIDEWALK, FULL SIDEWALK CLOSURES & DETOURS SHALL BE IMPLEMENTED.



Know what's below.  
 Call before you dig.

NOTE:  
 STAGING AND CONSTRUCTION SIGNAGE TO BE PRESENT DURING CONSTRUCTION ONLY.





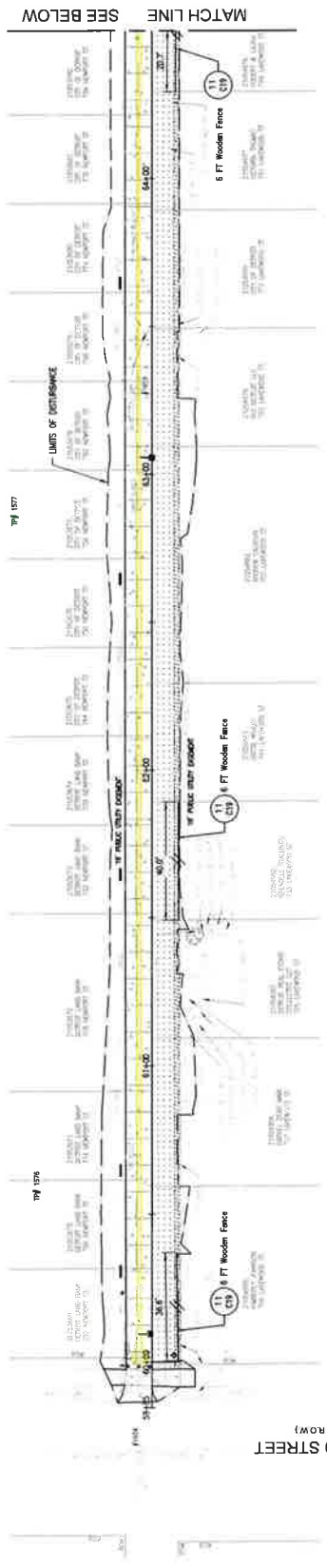
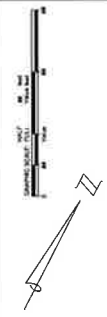




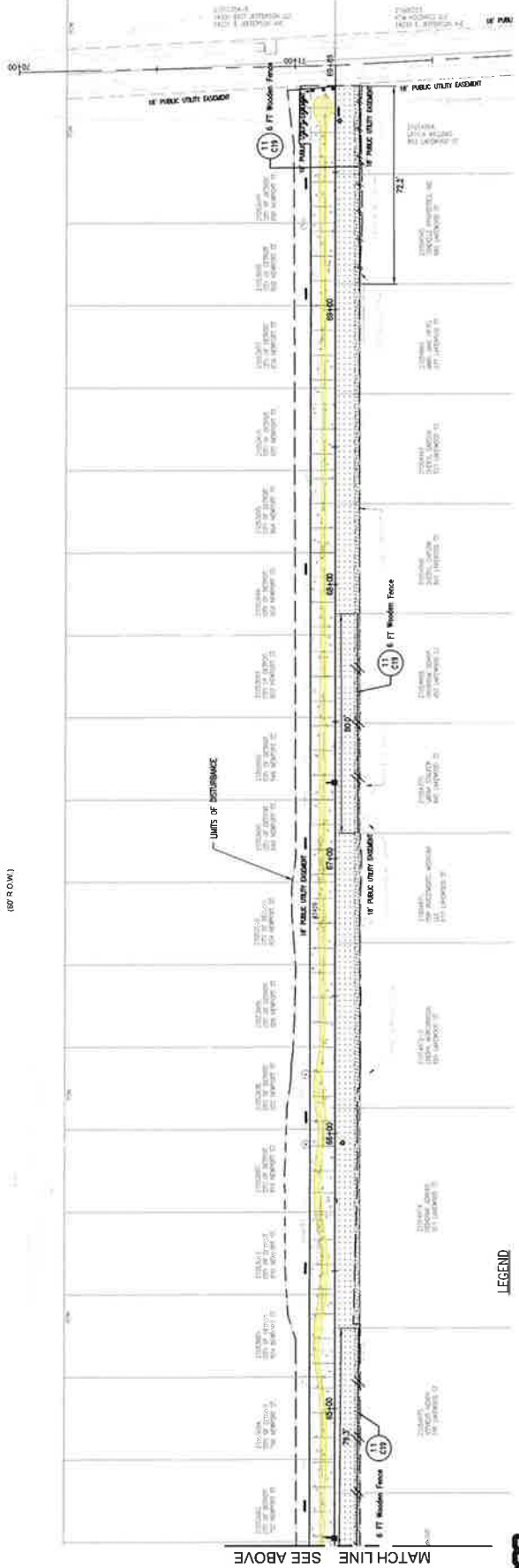


PROJECT NO. 1579  
 DATE: 10/20/17  
 DRAWN BY: J. B. [unreadable]  
 CHECKED BY: [unreadable]

# YELLOW BRICK ROAD ARTS ALLEY



## NEWPORT STREET (OPPOSITE)



LEGEND

FENCING QUANTITIES	
RED CHAIN LINK FENCE	290 FT
NEW 6' WOODEN FENCE	338 FT



DATE	REVISION	DESCRIPTION
10/20/17		

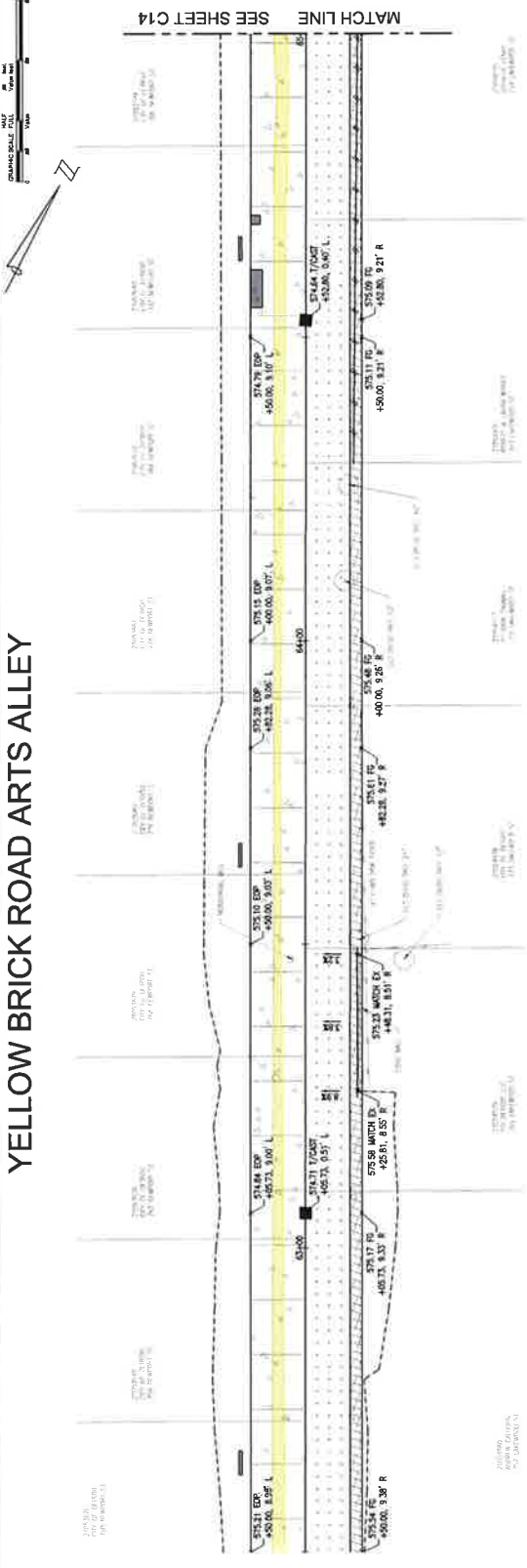
PROJECT NUMBER	DATE	PROJECT LEAD	CLIENT PROJECT
1579-13-0103	10/20/17	J. B. [unreadable]	ARTS ALLEY - PHASE II

YELLOW BRICK ROAD  
 SITE LAYOUT PLAN - FENCING

C11



# YELLOW BRICK ROAD ARTS ALLEY



PROJECT NUMBER	74	PROJECT NAME	ARTS ALLEY - PHASE II
DATE	12/15/2015	DESIGNER	OHM
REVISION	01	DATE	12/15/2015

GRADING PLAN  
 YELLOW BRICK ROAD  
 ARTS ALLEY - PHASE II  
 CITY OF DETROIT

C13



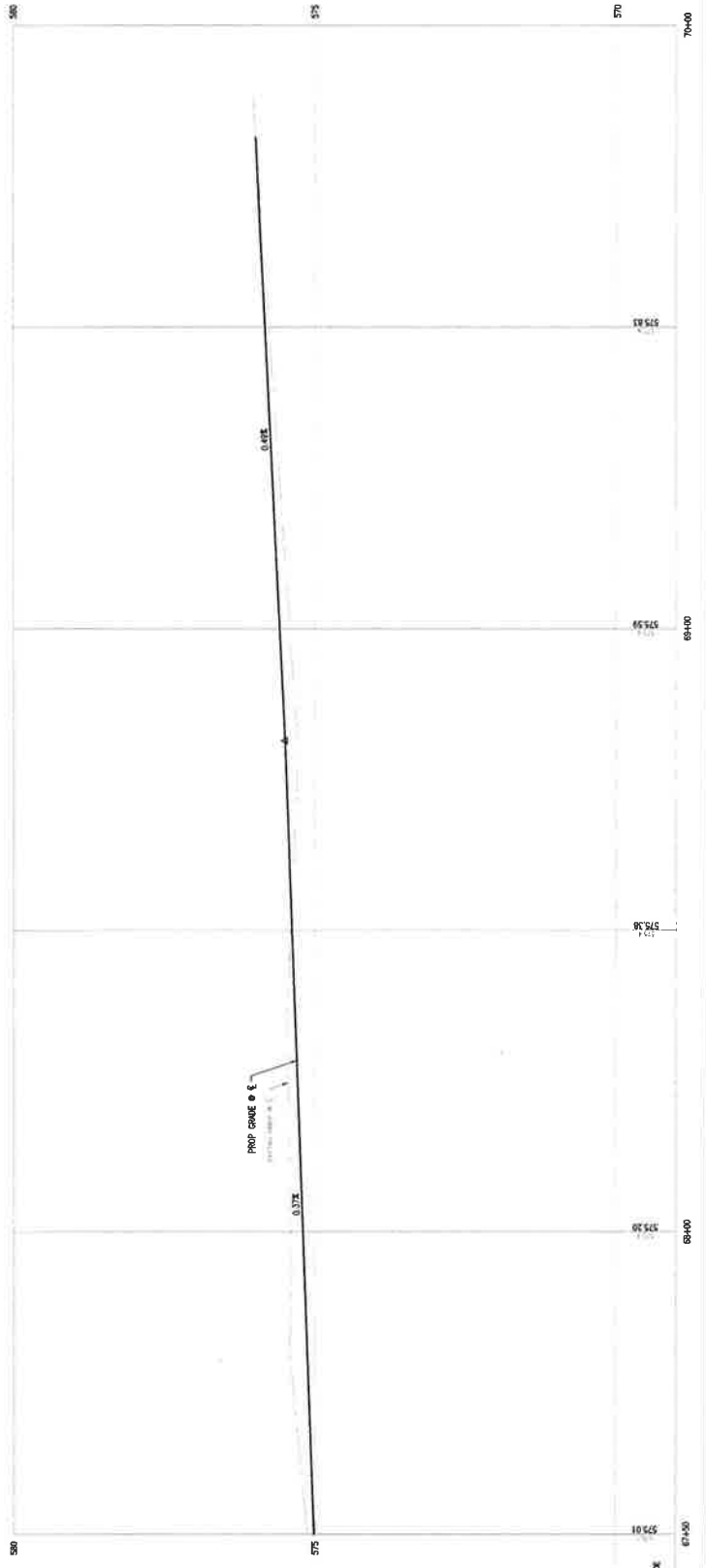
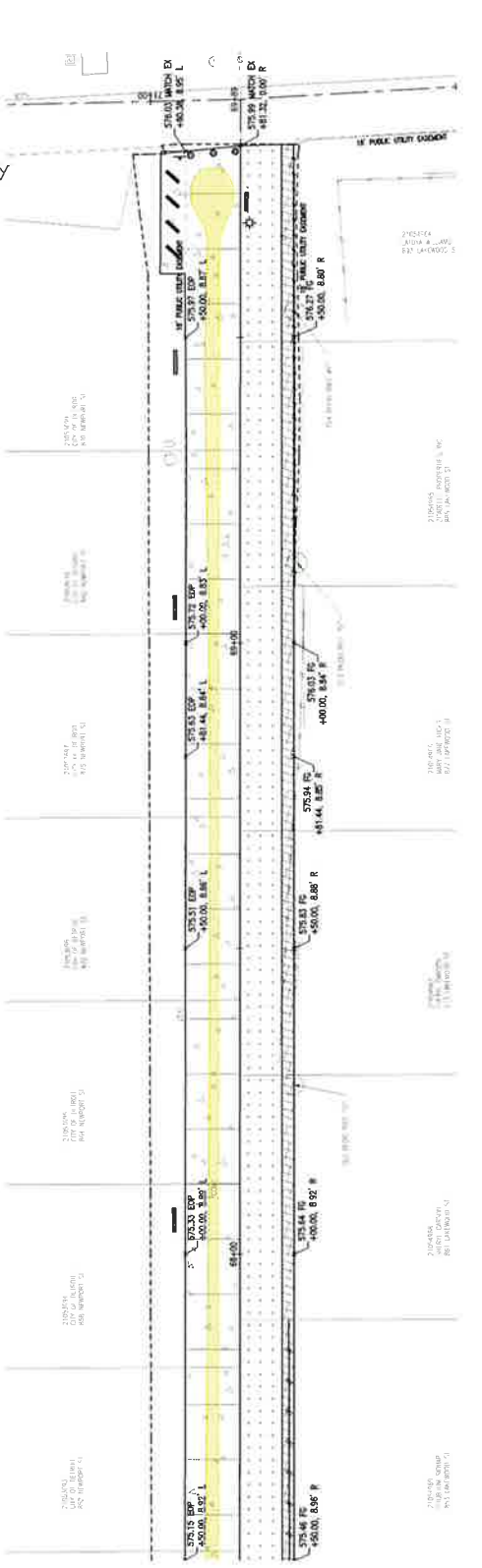
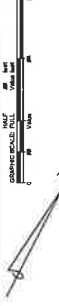


REVISION	DESCRIPTION	DATE
1	ISSUED FOR PERMITS	

PROJECT NUMBER	PROJECT LEAD	CLIENT REFERENCE
C15	ARTS ALLEY - PHASE II	YELLOW BRICK ROAD

C15

# YELLOW BRICK ROAD ARTS ALLEY



- LEGEND**
- TOP = EDGE OF PAVEMENT
  - BOC = BACK OF CURB
  - EX = EXISTING
  - 1/2" = 0' = TOP OF CURBING
  - 0' = 0' = PROPOSED GRADE

**NOTE:**  
COORDINATE LAYOUT OF PAVING JOINTS WITH SURFACE FEATURES SUCH AS CURBS AND UTILITY LOCATIONS. PLAN TO ENGINEER FOR APPROVAL PRIOR TO BEGINNING PAVING OPERATIONS.















