



CITY OF DETROIT
DEPARTMENT OF PUBLIC WORKS
CITY ENGINEERING DIVISION

COLEMAN A. YOUNG MUNICIPAL CENTER
2 WOODWARD AVE. SUITE 601
DETROIT, MICHIGAN 48226
PHONE: (313) 224-3949 TTY: 711
WWW.DETROITMI.GOV

To: Clerk's Office
From: The Department of Public Works
City Engineering Division
MapsandRecordsBureau@DetroitMI.Gov
(313) 224-3970

Petitioner:
Buildings, Safety Engineering, and Environmental Department
2 Woodward Ave, Suite 601
Detroit, MI 48226

On behalf of the above-mentioned petitioner the Department of Public Works: City Engineering Division is submitting a petition request for the action below. The petitioner has received a project consultation from the Department of Public Works: City Engineering Division and has been advised the following:

Type of action recommended:

The proposed project includes the activation of an existing alleyway for the creation of shared public spaces to celebrate neighborhoods and promote the installation of art. The improvements noted within this submittal include the infrastructure elements to renew the alleys; making them accessible and safe for pedestrians.

The scope of work necessary for this project will include the following:

- Alley vegetation clearing and disposal of debris
- Drainage improvements with the installation of new catch basins and adjusting existing manholes to grade.
- Removal and replacement of alley pavements with concrete and decorative concrete.
- Installation of a landscaping adjacent to the alley on property owned by Oakland Avenue Community Farms.
- Installation of solar powered lighting.
- Installation of an electrical service.

Raven Wright
Supervisor of Maps and Records



**CITY OF DETROIT
DEPARTMENT OF PUBLIC WORKS
CITY ENGINEERING DIVISION**

**COLEMAN A. YOUNG MUNICIPAL CENTER
2 WOODWARD AVE. SUITE 601
DETROIT, MICHIGAN 48226
PHONE: (313) 224-3949 TTY: 711
WWW.DETROITMI.GOV**

Department of Public Works
City Engineering Division
313-224-3985



February 20, 2024

Buildings, Safety Engineering, and Environmental Department
2 Woodward Ave, Suite 601
Detroit, MI 48226

Re: E-Plans Review for the Arts Alleys Project
North End Arts Alley

On behalf of the City of Detroit's Office of Art, Culture, and Entrepreneurship (ACE), OHM Advisors is submitting construction plans for review and approval by the various City Departments. The proposed project includes the activation of an existing alleyway for the creation of shared public spaces to celebrate neighborhoods and promote the installation of art. The improvements noted within this submittal include the infrastructure elements to renew the alleys; making them accessible and safe for pedestrians.

The scope of work necessary for this project will include the following:

- Alley vegetation clearing and disposal of debris
- Drainage improvements with the installation of new catch basins and adjusting existing manholes to grade.
- Removal and replacement of alley pavements with concrete and decorative concrete.
- Installation of a landscaping adjacent to the alley on property owned by Oakland Avenue Community Farms.
- Installation of solar powered lighting.
- Installation of an electrical service.

Alley Use

As part of this project, the existing public alley parallel to Oakland Avenue between Owen and Westminster will be improved. This will include new concrete pavement protected on each end with removable bollards which will protect the space for pedestrian use as intended. The edges of this new space will include movable benches. The alley will be marked with the installation of decorative ACE Arts Alley signage.

Based on the proposed improvements, ACE will be submitting encroachment petitions denoting the above noted non-typical items within the east-west alley. The encroachment petition will also include written consent from property owners adjoining the alleyways. In addition, a separate standard DPW maintenance agreement will be provided documenting the improvements.

Adjacent Improvements

The plans depict improvements on a number of adjacent properties. Specifically, there will be fencing improvements to better define the alleyway. In addition, landscape plantings will be placed adjacent to the alley on private property.



CITY OF DETROIT
DEPARTMENT OF PUBLIC WORKS
CITY ENGINEERING DIVISION

COLEMAN A. YOUNG MUNICIPAL CENTER
2 WOODWARD AVE. SUITE 601
DETROIT, MICHIGAN 48226
PHONE: (313) 224-3949 TTY: 711
WWW.DETROITMI.GOV



North End Arts Alley: E-Plans Submission Cover Letter
February 20, 2024
Page 2 of 2

Prior Development Team Meeting

This submission is a continuation of the process initiated last year that culminated in a Preliminary Plan Review meeting, held on November 20, 2023. The plans include the following change from this initial plan set:

1. The full alley will be paved per direction received from DWSD.

Questions and Review

The Arts Alley Projects are funded as part of the City of Detroit's ARPA Allotment which requires that the improvements are obligated no later than December 31, 2024. ACE appreciates any assistance in expediting reviews. If there are any questions, please contact me with any questions at 313-481-1253 or via e-mail at Zachary.hampton@ohm-advisors.com.

Sincerely,
OHM Advisors

Zachary Hampton, P.E.
Project Manager

cc: File



CITY OF DETROIT
DEPARTMENT OF PUBLIC WORKS
CITY ENGINEERING DIVISION

COLEMAN A. YOUNG MUNICIPAL CENTER
2 WOODWARD AVE. SUITE 601
DETROIT, MICHIGAN 48226
PHONE: (313) 224-3949 TTY: 711
WWW.DETROITMI.GOV

CITY OF DETROIT

ARTS ALLEY - PHASE II

NORTH END
WAYNE COUNTY, MICHIGAN



OWNER: GENERAL SERVICES DEPARTMENT
 CONTACT: ROACHELLE RELEY
 115 E. WOODWARD STREET
 DETROIT, MI 48226
 PHONE: 313-480-1285

ENGINEER: OHM ADVISORS, INC.
 CONTACT: ZACHARY HAMPFORD, P.E.
 1405 SHERRILL STREET, SUITE 200
 DETROIT, MICHIGAN 48226
 313-480-1222
 ZACHARY.HAMPFORD@OHM-ADVISORS.COM



UTILITY PROVIDERS

SEWER/WATER
 DETROIT WATER AND SEWERAGE
 735 RANDOLPH STREET
 DETROIT, MI 48226
 PHONE: 313-267-8000
 EMAIL: MICHIGAN.LAWSON@DETROITMI.GOV

ELECTRICITY/GAS
 DETROIT Edison
 ONE ENERGY PLAZA, 518 58
 DETROIT, MI 48226
 PHONE: 313-235-5632
 EMAIL: EDISON_MIS@DETROITENERGY.COM

TELEPHONE/CABLE
 AT&T
 24 N. WELLS ST. 4TH FLOOR
 PONTIAC, MI 48342
 EMAIL: 12315@ATT.COM
 CONTACT: HEATHER VALLE-KNOBBLAUCH

SHEET INDEX

REVISION KEY
 ■ NEW SHEET ● NOT REVISION ▲ REVISION

SHEET	DESCRIPTION	DATE	BY	CHKD
01	CONTRACT	01/19/24	ZH	MM
02	CONTRACT	01/19/24	ZH	MM
03	CONTRACT	01/19/24	ZH	MM
04	CONTRACT	01/19/24	ZH	MM
05	CONTRACT	01/19/24	ZH	MM
06	CONTRACT	01/19/24	ZH	MM
07	CONTRACT	01/19/24	ZH	MM
08	CONTRACT	01/19/24	ZH	MM
09	CONTRACT	01/19/24	ZH	MM
10	CONTRACT	01/19/24	ZH	MM
11	CONTRACT	01/19/24	ZH	MM
12	CONTRACT	01/19/24	ZH	MM
13	CONTRACT	01/19/24	ZH	MM
14	CONTRACT	01/19/24	ZH	MM
15	CONTRACT	01/19/24	ZH	MM
16	CONTRACT	01/19/24	ZH	MM
17	CONTRACT	01/19/24	ZH	MM
18	CONTRACT	01/19/24	ZH	MM
19	CONTRACT	01/19/24	ZH	MM
20	CONTRACT	01/19/24	ZH	MM
21	CONTRACT	01/19/24	ZH	MM
22	CONTRACT	01/19/24	ZH	MM
23	CONTRACT	01/19/24	ZH	MM
24	CONTRACT	01/19/24	ZH	MM
25	CONTRACT	01/19/24	ZH	MM
26	CONTRACT	01/19/24	ZH	MM
27	CONTRACT	01/19/24	ZH	MM
28	CONTRACT	01/19/24	ZH	MM
29	CONTRACT	01/19/24	ZH	MM
30	CONTRACT	01/19/24	ZH	MM
31	CONTRACT	01/19/24	ZH	MM
32	CONTRACT	01/19/24	ZH	MM
33	CONTRACT	01/19/24	ZH	MM
34	CONTRACT	01/19/24	ZH	MM
35	CONTRACT	01/19/24	ZH	MM
36	CONTRACT	01/19/24	ZH	MM
37	CONTRACT	01/19/24	ZH	MM
38	CONTRACT	01/19/24	ZH	MM
39	CONTRACT	01/19/24	ZH	MM
40	CONTRACT	01/19/24	ZH	MM
41	CONTRACT	01/19/24	ZH	MM
42	CONTRACT	01/19/24	ZH	MM
43	CONTRACT	01/19/24	ZH	MM
44	CONTRACT	01/19/24	ZH	MM
45	CONTRACT	01/19/24	ZH	MM
46	CONTRACT	01/19/24	ZH	MM
47	CONTRACT	01/19/24	ZH	MM
48	CONTRACT	01/19/24	ZH	MM
49	CONTRACT	01/19/24	ZH	MM
50	CONTRACT	01/19/24	ZH	MM
51	CONTRACT	01/19/24	ZH	MM
52	CONTRACT	01/19/24	ZH	MM
53	CONTRACT	01/19/24	ZH	MM
54	CONTRACT	01/19/24	ZH	MM
55	CONTRACT	01/19/24	ZH	MM
56	CONTRACT	01/19/24	ZH	MM
57	CONTRACT	01/19/24	ZH	MM
58	CONTRACT	01/19/24	ZH	MM
59	CONTRACT	01/19/24	ZH	MM
60	CONTRACT	01/19/24	ZH	MM
61	CONTRACT	01/19/24	ZH	MM
62	CONTRACT	01/19/24	ZH	MM
63	CONTRACT	01/19/24	ZH	MM
64	CONTRACT	01/19/24	ZH	MM
65	CONTRACT	01/19/24	ZH	MM
66	CONTRACT	01/19/24	ZH	MM
67	CONTRACT	01/19/24	ZH	MM
68	CONTRACT	01/19/24	ZH	MM
69	CONTRACT	01/19/24	ZH	MM
70	CONTRACT	01/19/24	ZH	MM
71	CONTRACT	01/19/24	ZH	MM
72	CONTRACT	01/19/24	ZH	MM
73	CONTRACT	01/19/24	ZH	MM
74	CONTRACT	01/19/24	ZH	MM
75	CONTRACT	01/19/24	ZH	MM
76	CONTRACT	01/19/24	ZH	MM
77	CONTRACT	01/19/24	ZH	MM
78	CONTRACT	01/19/24	ZH	MM
79	CONTRACT	01/19/24	ZH	MM
80	CONTRACT	01/19/24	ZH	MM
81	CONTRACT	01/19/24	ZH	MM
82	CONTRACT	01/19/24	ZH	MM
83	CONTRACT	01/19/24	ZH	MM
84	CONTRACT	01/19/24	ZH	MM
85	CONTRACT	01/19/24	ZH	MM
86	CONTRACT	01/19/24	ZH	MM
87	CONTRACT	01/19/24	ZH	MM
88	CONTRACT	01/19/24	ZH	MM
89	CONTRACT	01/19/24	ZH	MM
90	CONTRACT	01/19/24	ZH	MM
91	CONTRACT	01/19/24	ZH	MM
92	CONTRACT	01/19/24	ZH	MM
93	CONTRACT	01/19/24	ZH	MM
94	CONTRACT	01/19/24	ZH	MM
95	CONTRACT	01/19/24	ZH	MM
96	CONTRACT	01/19/24	ZH	MM
97	CONTRACT	01/19/24	ZH	MM
98	CONTRACT	01/19/24	ZH	MM
99	CONTRACT	01/19/24	ZH	MM
100	CONTRACT	01/19/24	ZH	MM

100% PLANS
OHM PROJECT NO. 7508-23-0010
DATE/ISSUE: 01/19/24

I Certify That The Plans Were Prepared
 Under My Direct Supervision

I Certify That The Information Herein
 Relates To The Direct Supervision



<p>WATER & SEWER UTILITY SYMBOLS</p> <p>EXISTING</p> <ul style="list-style-type: none"> CH STORM MANHOLE □ SQUARE CATCH BASIN ● ROUND CATCH BASIN — CLEANER ○ CLEANER W/ END SECTION ⌋ CLEANER W/ END SECTION CH SWAMPY MANHOLE ○ CLEAN OUT ○ GATE VALVE & WELL □ GATE VALVE & BOX ○ WATER STOP BOX ▽ FIRE HYDRANT ⊞ WATER PIT ○ WATER METER ○ SPRINKLER HEAD ○ IRREGULAR VALVE <p>PROPOSED</p> <ul style="list-style-type: none"> ● STORM MANHOLE ■ RELOCATION BASIN ⌋ CLEANER END SECTION ● SWAMPY MANHOLE ○ GATE VALVE & WELL ○ GATE VALVE & BOX ○ SPRING SLIDE VALVE & WELL ○ SPRING SLIDE VALVE & BOX ▽ FIRE HYDRANT ⊞ WATER SERVICE CONNECTION ⊞ WATER PIT ⊞ ELECTRIC CONDUIT ○ WARD HYDRANT ○ CLEAN OUT <p>REAL ESTATE SYMBOLS</p> <ul style="list-style-type: none"> → CONVEYANCE PROPERTY SYMBOL ○ WELLS, HANDED BOX ○ NO ROW MARCHES 	<p>MISCELLANEOUS UTILITY SYMBOLS</p> <p>EXISTING</p> <ul style="list-style-type: none"> ⊞ GUY WIRE ⊞ GUY POLE ⊞ GUY POLE ⊞ UTILITY POLE W/ LIGHT ⊞ LIGHT/DECK LAMP POLE ⊞ FLOOD LIGHT ⊞ GAS VALVE ⊞ GAS METER ⊞ GAS METER ⊞ GAS METER ⊞ SERVICE SIGNAL ⊞ PROTECTION BOX ⊞ TRANSFORMER PAD ⊞ PRIVATE UTILITY MANHOLE ⊞ PHONE BOOTH ⊞ TRAFFIC SIGNAL CONTROLLER <p>PROPOSED</p> <ul style="list-style-type: none"> ⊞ ELECTRIC RISER ⊞ TELEPHONE RISER ⊞ CABLE TV RISER ⊞ MONITORING WELL ⊞ UNDERGROUND MARKER <p>FROSTION CONTROL PLAN</p> <ul style="list-style-type: none"> ▨ AGGREGATE TRACING MAT ▨ MELT FILTER (PREVENT) --- LIMITS OF DISTURBANCE 	<p>MISCELLANEOUS SYMBOLS</p> <p>EXISTING</p> <ul style="list-style-type: none"> ⊞ BRAP ⊞ SOIL → FLOW DIRECTION ⊞ STAMP ⊞ METAL ○ CONCRETE TREE ○ CONCRETE SURFACE ○ RECONSTRUCT SURFACE ○ SOIL BORING ⊞ SECTION CORNER ⊞ MONUMENT ⊞ IRON ROD/PIPE ⊞ P.C. W/ VAL ⊞ BENCH MARK ⊞ TRANSFER POINT ⊞ W/ALUMINUM BOX ⊞ FLUX POLE ⊞ POST <p>PROPOSED</p> <ul style="list-style-type: none"> ⊞ BRAP ⊞ SOIL → FLOW DIRECTION ⊞ STRUCTURE NUMBER ⊞ AIR BORING SHAP <p>PROPOSED PAVEMENT LEGEND</p> <ul style="list-style-type: none"> ▨ PROPOSED COMPOSITE PAVEMENT ▨ PROPOSED CONCRETE PAVEMENT <p>PROPOSED PAVEMENT SURFACE TREATMENT LEGEND</p> <ul style="list-style-type: none"> ▨ EXPOSED AGGREGATE ▨ PAVEMENT REMOVAL ▨ COLD MELTING HMA SURFACE ▨ HMA W/ ICE CRACKING AND SHAPING ▨ EXCAVATION, EMITS, REEFED 	<p>UTILITY PATTERN</p> <p>EXISTING</p> <ul style="list-style-type: none"> — ELECTRICAL — GAS/VAL — CABLE/TELEPHONE — FIBER OPTIC — WATER — SANITARY — STORM <p>PROPOSED</p> <ul style="list-style-type: none"> — STORM/SANITARY/WATER — FIBER OPTIC (SEE NOTE 1) — ELECTRICAL (SEE NOTE 2) — GAS (SEE NOTE 3) — CABLE/TELEPHONE (SEE NOTE 4) <p>ROW PATTERN</p> <p>EXISTING</p> <ul style="list-style-type: none"> — ROW — SECTION — PROPERTY/PANEL <p>PROPOSED</p> <ul style="list-style-type: none"> — ROW 	<p>REMOVAL LEGEND</p> <ul style="list-style-type: none"> ▨ SIDEWALK REMOVAL ▨ HMA SURFACE REMOVAL ▨ PAVEMENT REMOVAL ▨ COLD MELTING HMA SURFACE ▨ HMA W/ ICE CRACKING AND SHAPING ▨ EXCAVATION, EMITS, REEFED ▨ CURB AND GUTTER, ROW ▨ CLEARING ▨ SKALING ▨ BRUSHING ▨ ASPHALT ▨ RELOCATE ▨ RECONSTRUCT ▨ REMOVE BY OTHERS ▨ ADJUST BY OTHERS ▨ RELOCATE BY OTHERS <p>IF NECESSARY FOR CLARITY</p> <ul style="list-style-type: none"> ○ SKALING ○ BRUSHING ○ ASPHALT ○ REMOVE ○ RELOCATE ○ RECONSTRUCT ○ REMOVE BY OTHERS ○ ADJUST BY OTHERS <p>SPECIAL LEGEND</p> <ul style="list-style-type: none"> ▨ PROPOSED LANDSCAPING AREA ▨ PROPOSED TWP AREA 	<p>CITY OF DETROIT ARTS ALLEY - PHASE II CONTINUED LEGEND</p> <p>C2</p>
---	---	--	--	--	---



GENERAL NOTES

UTILITIES

THE CONTRACTOR SHALL VERIFY THE LOCATION AND DEPTH OF ALL UTILITIES PRIOR TO CONSTRUCTION. THE CONTRACTOR SHALL VERIFY THE LOCATION AND DEPTH OF ALL UTILITIES PRIOR TO CONSTRUCTION. THE CONTRACTOR SHALL VERIFY THE LOCATION AND DEPTH OF ALL UTILITIES PRIOR TO CONSTRUCTION.

THE EXISTING UTILITIES SHOWN ON THESE PLANS REPRESENT THE BEST INFORMATION AVAILABLE TO THE CONTRACTOR. THE CONTRACTOR SHALL VERIFY THE LOCATION AND DEPTH OF ALL UTILITIES PRIOR TO CONSTRUCTION.

BENCH MARK ELEVATIONS

BENCHMARK ELEVATIONS SHOWN ON THESE PLANS ARE BASED ON MVD 100.

PROPERTY CORNERS

ANY PROPERTY CORNER WITHIN THE FRONT OR BACK LOT SHALL BE STAKED AND PROTECTED BY THE CONTRACTOR. THE CONTRACTOR SHALL VERIFY THE LOCATION AND DEPTH OF ALL UTILITIES PRIOR TO CONSTRUCTION.

UTILITY NOTES

1. UNLESS SPECIFICALLY NOTED FOR REMOVAL, ON THE CONSTRUCTION PLANS, ALL EXISTING UTILITIES SHALL BE MAINTAINED AND PROTECTED. THE CONTRACTOR SHALL VERIFY THE LOCATION AND DEPTH OF ALL UTILITIES PRIOR TO CONSTRUCTION.
2. EXISTING WATER MAINS, GAS MAINS AND UNDERGROUND TELEPHONE, ELECTRIC AND CABLE TELEVISION CONDUITS AND/OR LINES ARE SHOWN ONLY IN THE PLANS AND SHALL BE MAINTAINED AND PROTECTED. THE CONTRACTOR SHALL VERIFY THE LOCATION AND DEPTH OF ALL UTILITIES PRIOR TO CONSTRUCTION.
3. EXISTING UTILITIES SHALL BE MAINTAINED AND PROTECTED. THE CONTRACTOR SHALL VERIFY THE LOCATION AND DEPTH OF ALL UTILITIES PRIOR TO CONSTRUCTION.

THE CONTRACTOR SHALL PROTECT EXISTING UTILITIES, WATER MAINS, GAS MAINS AND SANITARY SEWERS IN A MANNER ACCEPTABLE TO THE ENGINEER DURING THE PROGRESS OF CONSTRUCTION. THE CONTRACTOR SHALL VERIFY THE LOCATION AND DEPTH OF ALL UTILITIES PRIOR TO CONSTRUCTION.

PRIOR TO CONSTRUCTION, THE CONTRACTOR SHALL VERIFY THE LOCATION AND DEPTH OF ALL UTILITIES PRIOR TO CONSTRUCTION. THE CONTRACTOR SHALL VERIFY THE LOCATION AND DEPTH OF ALL UTILITIES PRIOR TO CONSTRUCTION.

CONTRACTOR TO COORDINATE ALL EXISTING GAS MAINS AND SERVICE LEAD CONNECTIONS WITHIN ONE (1) YEAR OF COMPLETION OF CONSTRUCTION. THE CONTRACTOR SHALL VERIFY THE LOCATION AND DEPTH OF ALL UTILITIES PRIOR TO CONSTRUCTION.

CONTRACTOR TO COORDINATE ALL EXISTING GAS MAINS AND SERVICE LEAD CONNECTIONS WITHIN ONE (1) YEAR OF COMPLETION OF CONSTRUCTION. THE CONTRACTOR SHALL VERIFY THE LOCATION AND DEPTH OF ALL UTILITIES PRIOR TO CONSTRUCTION.

CONTRACTOR TO COORDINATE ALL EXISTING GAS MAINS AND SERVICE LEAD CONNECTIONS WITHIN ONE (1) YEAR OF COMPLETION OF CONSTRUCTION. THE CONTRACTOR SHALL VERIFY THE LOCATION AND DEPTH OF ALL UTILITIES PRIOR TO CONSTRUCTION.

SAWCUTS

THE CONTRACTOR SHALL SAWCUT ALL EXISTING CONCRETE AND/OR ASPHALT PAVEMENT AND REPAIRS TO THE LIMITS OF PROPOSED CONSTRUCTION TO BE MADE IN ACCORDANCE WITH THE CITY OF DETROIT STANDARD SPECIFICATIONS FOR ROADWAY CONSTRUCTION.

OPEN EXCAVATIONS

THE CONTRACTOR SHALL PROTECT ALL EXISTING UTILITIES AND OPEN EXCAVATIONS. THE CONTRACTOR SHALL VERIFY THE LOCATION AND DEPTH OF ALL UTILITIES PRIOR TO CONSTRUCTION.

THE CONTRACTOR SHALL PROTECT ALL EXISTING UTILITIES AND OPEN EXCAVATIONS. THE CONTRACTOR SHALL VERIFY THE LOCATION AND DEPTH OF ALL UTILITIES PRIOR TO CONSTRUCTION.

THE CONTRACTOR SHALL PROTECT ALL EXISTING UTILITIES AND OPEN EXCAVATIONS. THE CONTRACTOR SHALL VERIFY THE LOCATION AND DEPTH OF ALL UTILITIES PRIOR TO CONSTRUCTION.

THE CONTRACTOR SHALL PROTECT ALL EXISTING UTILITIES AND OPEN EXCAVATIONS. THE CONTRACTOR SHALL VERIFY THE LOCATION AND DEPTH OF ALL UTILITIES PRIOR TO CONSTRUCTION.

THE CONTRACTOR SHALL PROTECT ALL EXISTING UTILITIES AND OPEN EXCAVATIONS. THE CONTRACTOR SHALL VERIFY THE LOCATION AND DEPTH OF ALL UTILITIES PRIOR TO CONSTRUCTION.

THE CONTRACTOR SHALL PROTECT ALL EXISTING UTILITIES AND OPEN EXCAVATIONS. THE CONTRACTOR SHALL VERIFY THE LOCATION AND DEPTH OF ALL UTILITIES PRIOR TO CONSTRUCTION.

THE CONTRACTOR SHALL PROTECT ALL EXISTING UTILITIES AND OPEN EXCAVATIONS. THE CONTRACTOR SHALL VERIFY THE LOCATION AND DEPTH OF ALL UTILITIES PRIOR TO CONSTRUCTION.

THE CONTRACTOR SHALL PROTECT ALL EXISTING UTILITIES AND OPEN EXCAVATIONS. THE CONTRACTOR SHALL VERIFY THE LOCATION AND DEPTH OF ALL UTILITIES PRIOR TO CONSTRUCTION.

THE CONTRACTOR SHALL PROTECT ALL EXISTING UTILITIES AND OPEN EXCAVATIONS. THE CONTRACTOR SHALL VERIFY THE LOCATION AND DEPTH OF ALL UTILITIES PRIOR TO CONSTRUCTION.

THE CONTRACTOR SHALL PROTECT ALL EXISTING UTILITIES AND OPEN EXCAVATIONS. THE CONTRACTOR SHALL VERIFY THE LOCATION AND DEPTH OF ALL UTILITIES PRIOR TO CONSTRUCTION.

SOILS AND EARTHWORK

1. SOIL INVESTIGATIONS HAVE NOT BEEN PERFORMED FOR THIS PROJECT. THE CONTRACTOR SHALL VERIFY THE LOCATION AND DEPTH OF ALL UTILITIES PRIOR TO CONSTRUCTION.
2. THE CONTRACTOR SHALL PROTECT ALL EXISTING UTILITIES AND OPEN EXCAVATIONS. THE CONTRACTOR SHALL VERIFY THE LOCATION AND DEPTH OF ALL UTILITIES PRIOR TO CONSTRUCTION.
3. THE CONTRACTOR SHALL PROTECT ALL EXISTING UTILITIES AND OPEN EXCAVATIONS. THE CONTRACTOR SHALL VERIFY THE LOCATION AND DEPTH OF ALL UTILITIES PRIOR TO CONSTRUCTION.
4. THE CONTRACTOR SHALL PROTECT ALL EXISTING UTILITIES AND OPEN EXCAVATIONS. THE CONTRACTOR SHALL VERIFY THE LOCATION AND DEPTH OF ALL UTILITIES PRIOR TO CONSTRUCTION.
5. THE CONTRACTOR SHALL PROTECT ALL EXISTING UTILITIES AND OPEN EXCAVATIONS. THE CONTRACTOR SHALL VERIFY THE LOCATION AND DEPTH OF ALL UTILITIES PRIOR TO CONSTRUCTION.
6. THE CONTRACTOR SHALL PROTECT ALL EXISTING UTILITIES AND OPEN EXCAVATIONS. THE CONTRACTOR SHALL VERIFY THE LOCATION AND DEPTH OF ALL UTILITIES PRIOR TO CONSTRUCTION.
7. THE CONTRACTOR SHALL PROTECT ALL EXISTING UTILITIES AND OPEN EXCAVATIONS. THE CONTRACTOR SHALL VERIFY THE LOCATION AND DEPTH OF ALL UTILITIES PRIOR TO CONSTRUCTION.
8. THE CONTRACTOR SHALL PROTECT ALL EXISTING UTILITIES AND OPEN EXCAVATIONS. THE CONTRACTOR SHALL VERIFY THE LOCATION AND DEPTH OF ALL UTILITIES PRIOR TO CONSTRUCTION.
9. THE CONTRACTOR SHALL PROTECT ALL EXISTING UTILITIES AND OPEN EXCAVATIONS. THE CONTRACTOR SHALL VERIFY THE LOCATION AND DEPTH OF ALL UTILITIES PRIOR TO CONSTRUCTION.
10. THE CONTRACTOR SHALL PROTECT ALL EXISTING UTILITIES AND OPEN EXCAVATIONS. THE CONTRACTOR SHALL VERIFY THE LOCATION AND DEPTH OF ALL UTILITIES PRIOR TO CONSTRUCTION.
11. THE CONTRACTOR SHALL PROTECT ALL EXISTING UTILITIES AND OPEN EXCAVATIONS. THE CONTRACTOR SHALL VERIFY THE LOCATION AND DEPTH OF ALL UTILITIES PRIOR TO CONSTRUCTION.
12. THE CONTRACTOR SHALL PROTECT ALL EXISTING UTILITIES AND OPEN EXCAVATIONS. THE CONTRACTOR SHALL VERIFY THE LOCATION AND DEPTH OF ALL UTILITIES PRIOR TO CONSTRUCTION.
13. THE CONTRACTOR SHALL PROTECT ALL EXISTING UTILITIES AND OPEN EXCAVATIONS. THE CONTRACTOR SHALL VERIFY THE LOCATION AND DEPTH OF ALL UTILITIES PRIOR TO CONSTRUCTION.
14. THE CONTRACTOR SHALL PROTECT ALL EXISTING UTILITIES AND OPEN EXCAVATIONS. THE CONTRACTOR SHALL VERIFY THE LOCATION AND DEPTH OF ALL UTILITIES PRIOR TO CONSTRUCTION.
15. THE CONTRACTOR SHALL PROTECT ALL EXISTING UTILITIES AND OPEN EXCAVATIONS. THE CONTRACTOR SHALL VERIFY THE LOCATION AND DEPTH OF ALL UTILITIES PRIOR TO CONSTRUCTION.

THE CONTRACTOR SHALL PROTECT ALL EXISTING UTILITIES AND OPEN EXCAVATIONS. THE CONTRACTOR SHALL VERIFY THE LOCATION AND DEPTH OF ALL UTILITIES PRIOR TO CONSTRUCTION.

THE CONTRACTOR SHALL PROTECT ALL EXISTING UTILITIES AND OPEN EXCAVATIONS. THE CONTRACTOR SHALL VERIFY THE LOCATION AND DEPTH OF ALL UTILITIES PRIOR TO CONSTRUCTION.

THE CONTRACTOR SHALL PROTECT ALL EXISTING UTILITIES AND OPEN EXCAVATIONS. THE CONTRACTOR SHALL VERIFY THE LOCATION AND DEPTH OF ALL UTILITIES PRIOR TO CONSTRUCTION.

THE CONTRACTOR SHALL PROTECT ALL EXISTING UTILITIES AND OPEN EXCAVATIONS. THE CONTRACTOR SHALL VERIFY THE LOCATION AND DEPTH OF ALL UTILITIES PRIOR TO CONSTRUCTION.

THE CONTRACTOR SHALL PROTECT ALL EXISTING UTILITIES AND OPEN EXCAVATIONS. THE CONTRACTOR SHALL VERIFY THE LOCATION AND DEPTH OF ALL UTILITIES PRIOR TO CONSTRUCTION.

THE CONTRACTOR SHALL PROTECT ALL EXISTING UTILITIES AND OPEN EXCAVATIONS. THE CONTRACTOR SHALL VERIFY THE LOCATION AND DEPTH OF ALL UTILITIES PRIOR TO CONSTRUCTION.

OMM
ADJECTS NUMBER PLURAL
ommmmm

Detroit
MICHIGAN

livingLAB

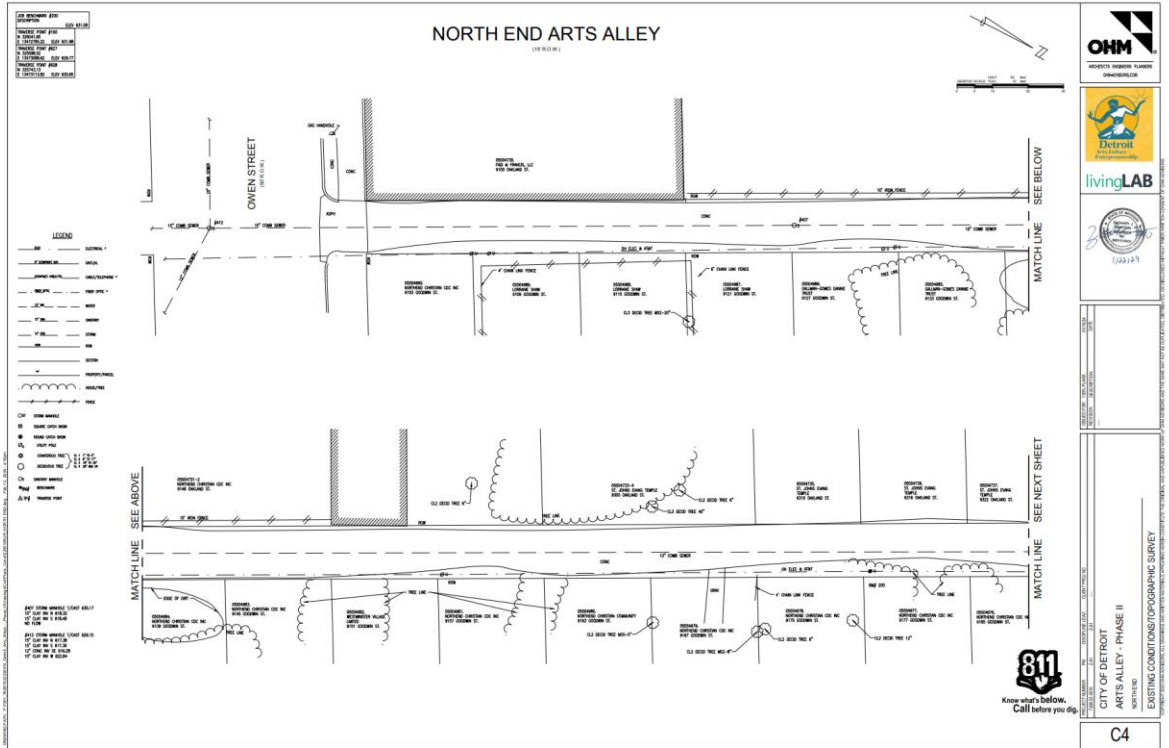
CITY OF DETROIT
ARTS ALLEY - PHASE II
GENERAL NOTES

C3



CITY OF DETROIT
DEPARTMENT OF PUBLIC WORKS
CITY ENGINEERING DIVISION

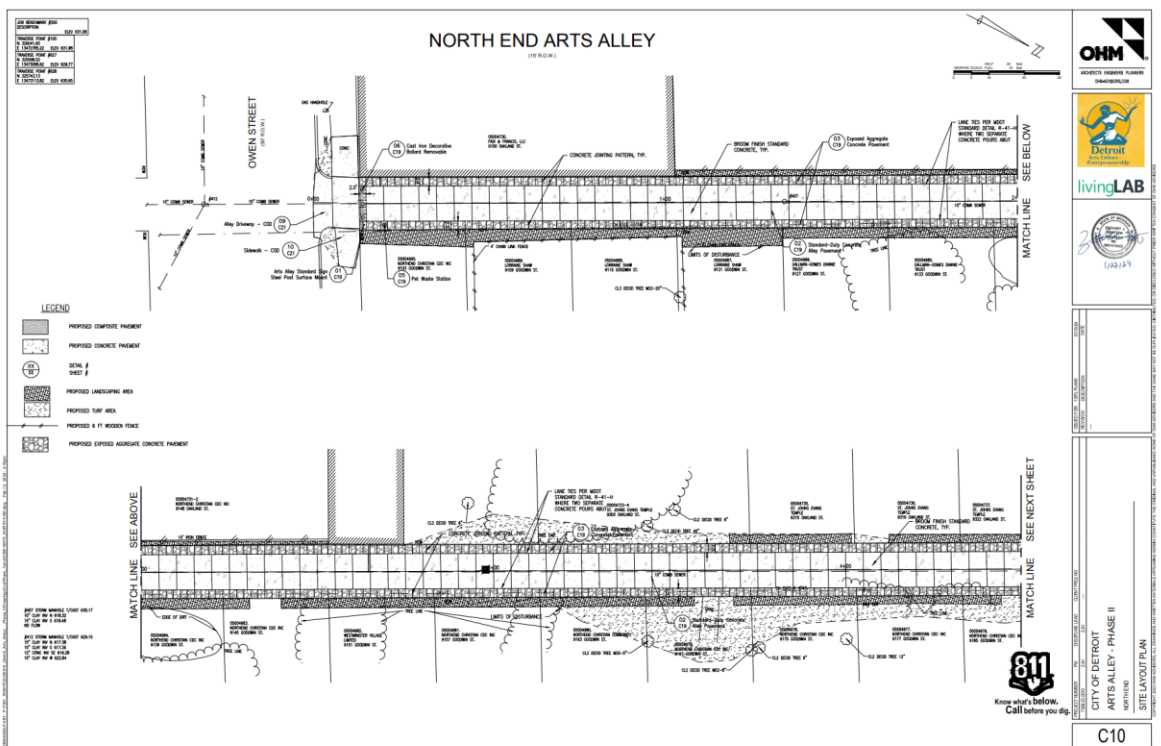
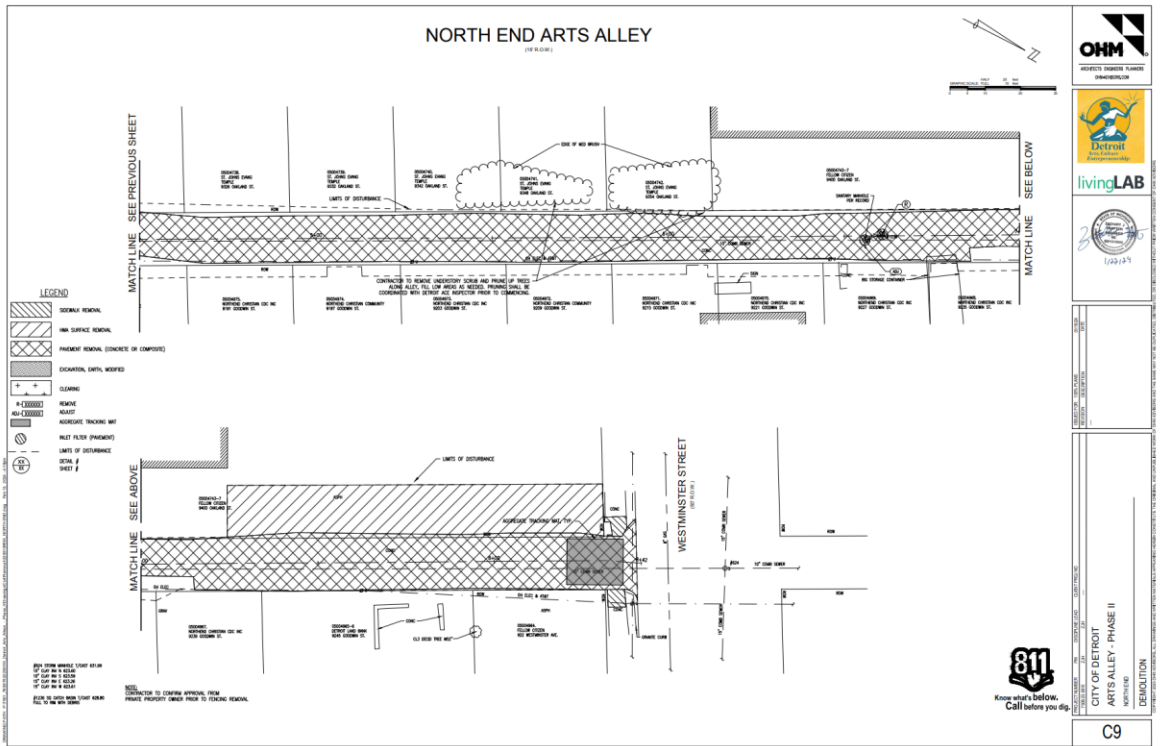
COLEMAN A. YOUNG MUNICIPAL CENTER
2 WOODWARD AVE. SUITE 601
DETROIT, MICHIGAN 48226
PHONE: (313) 224-3949 TTY: 711
WWW.DETROITMI.GOV





CITY OF DETROIT
DEPARTMENT OF PUBLIC WORKS
CITY ENGINEERING DIVISION

COLEMAN A. YOUNG MUNICIPAL CENTER
2 WOODWARD AVE. SUITE 601
DETROIT, MICHIGAN 48226
PHONE: (313) 224-3949 TTY: 711
WWW.DETROITMI.GOV





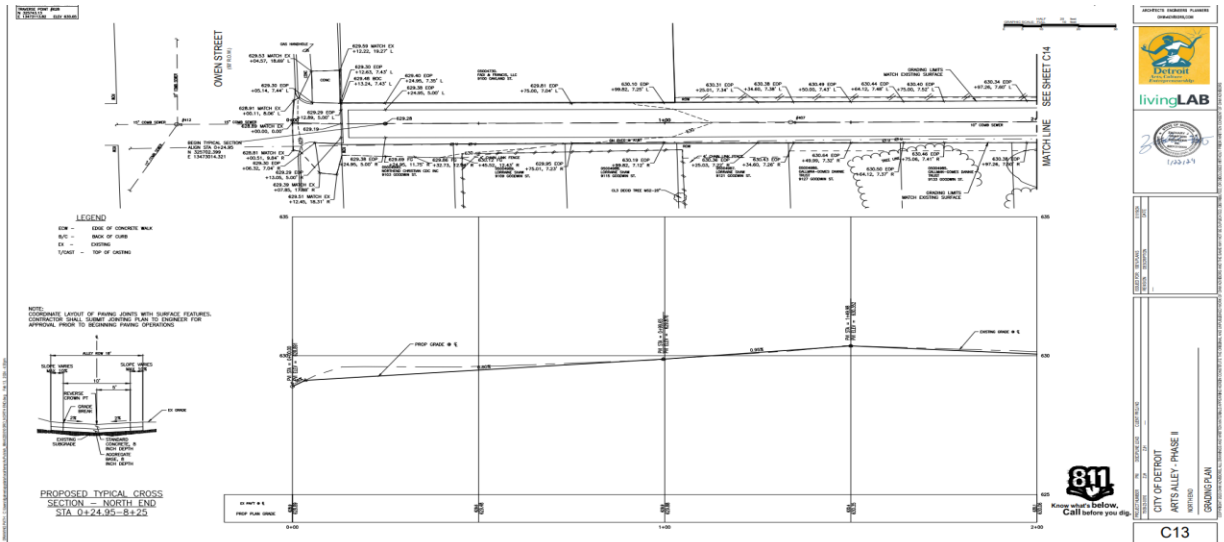
CITY OF DETROIT
DEPARTMENT OF PUBLIC WORKS
CITY ENGINEERING DIVISION

COLEMAN A. YOUNG MUNICIPAL CENTER
2 WOODWARD AVE. SUITE 601
DETROIT, MICHIGAN 48226
PHONE: (313) 224-3949 TTY: 711
WWW.DETROITMI.GOV

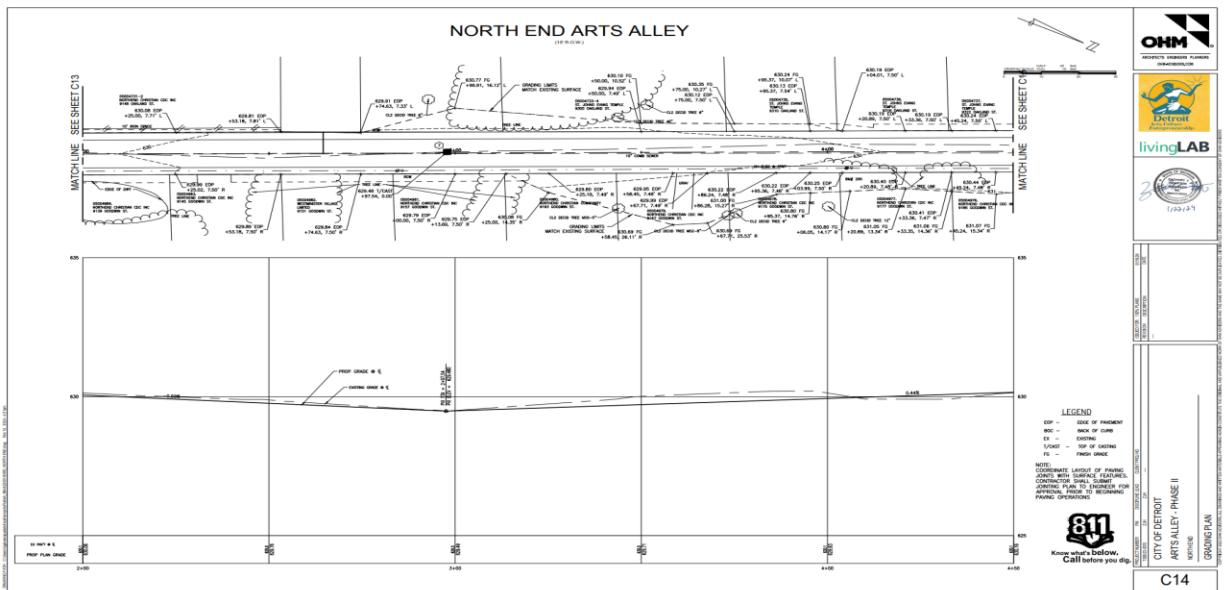


CITY OF DETROIT
DEPARTMENT OF PUBLIC WORKS
CITY ENGINEERING DIVISION

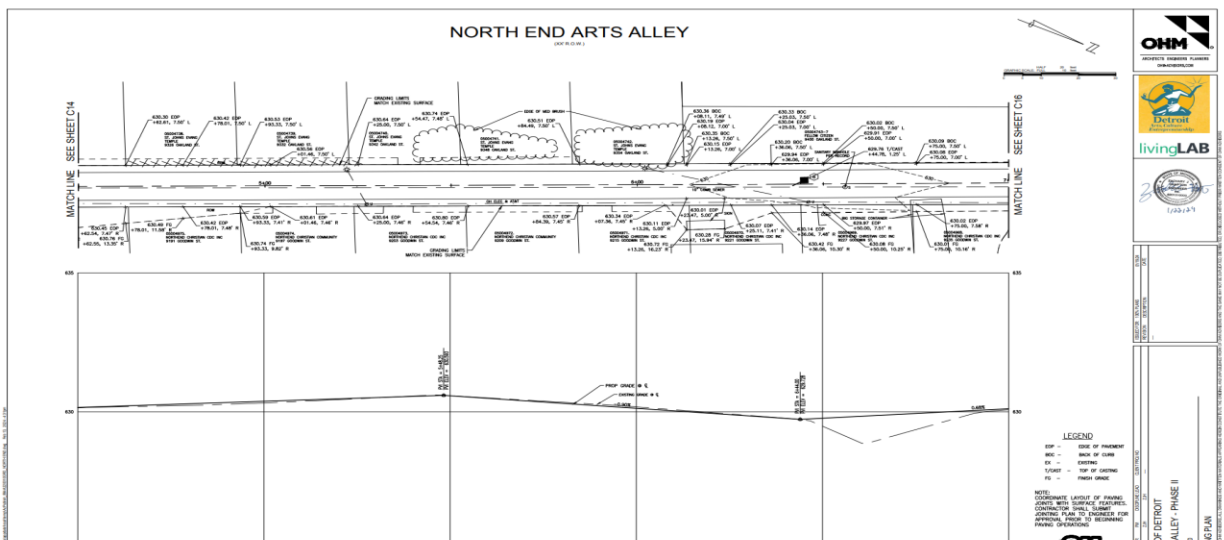
COLEMAN A. YOUNG MUNICIPAL CENTER
2 WOODWARD AVE. SUITE 601
DETROIT, MICHIGAN 48226
PHONE: (313) 224-3949 TTY: 711
WWW.DETROITMI.GOV



CITY OF DETROIT
 ARTS ALLEY - PHASE I
 GROUND PLAN
 C13



CITY OF DETROIT
 ARTS ALLEY - PHASE II
 GROUND PLAN
 C14



CITY OF DETROIT
 ARTS ALLEY - PHASE II
 GROUND PLAN
 C15



CITY OF DETROIT
DEPARTMENT OF PUBLIC WORKS
CITY ENGINEERING DIVISION

COLEMAN A. YOUNG MUNICIPAL CENTER
2 WOODWARD AVE. SUITE 601
DETROIT, MICHIGAN 48226
PHONE: (313) 224-3949 TTY: 711
WWW.DETROITMI.GOV

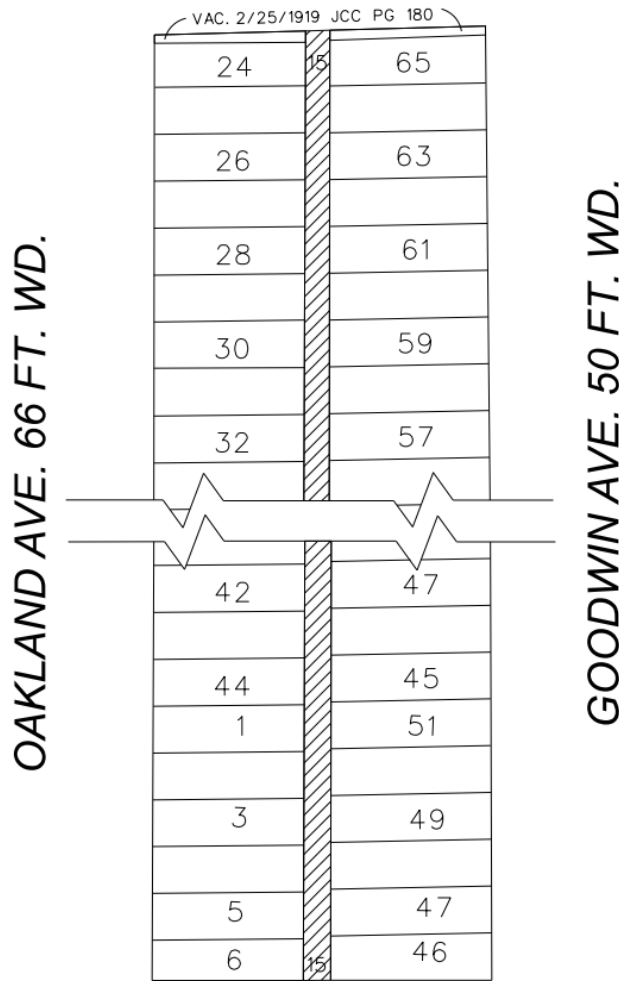


CITY OF DETROIT
 DEPARTMENT OF PUBLIC WORKS
 CITY ENGINEERING DIVISION

COLEMAN A. YOUNG MUNICIPAL CENTER
 2 WOODWARD AVE. SUITE 601
 DETROIT, MICHIGAN 48226
 PHONE: (313) 224-3949 TTY: 711
 WWW.DETROITMI.GOV

MAP-24-17

WESTMINSTER AVE. 50 FT. WD.



OWEN AVE. 60 FT. WD.



- REQUEST ENCROACHMENT (NEW CONCRETE PAVEMENT, BENCHING, BOLLARDS, FENCING, SIGNS, ASSOCIATED STORM AND LANDSCAPING)
 (FOR OFFICE USE ONLY)

CARTO 42 C / 42 D

B					
A					
REVISIONS					
DESCRIPTION	DRWN	CHKD	APPD	DATE	
DRAWN BY TS	CHECKED LC				
DATE 2-23-2024	APPROVED JD				

REQUEST ENCROACHMENT INTO THE NORTH/SOUTH ALLEY, 15 FT. WD. IN THE BLOCK BOUND BY GOODWIN AVE, OWEN AVE, OAKLAND AVE, AND WESTMINSTER AVE.

CITY OF DETROIT	
CITY ENGINEERING DIVISION	
SURVEY BUREAU	
JOB NO.	24-17
DRWG. NO.	



CITY OF DETROIT
DEPARTMENT OF PUBLIC WORKS
CITY ENGINEERING DIVISION

COLEMAN A. YOUNG MUNICIPAL CENTER
2 WOODWARD AVE. SUITE 601
DETROIT, MICHIGAN 48226
PHONE: (313) 224-3949 TTY: 711
WWW.DETROITMI.GOV
