



**CITY OF DETROIT
DEPARTMENT OF PUBLIC WORKS
CITY ENGINEERING DIVISION**

**COLEMAN A. YOUNG MUNICIPAL CENTER
2 WOODWARD AVE. SUITE 601
DETROIT, MICHIGAN 48226
PHONE: (313) 224-3949 TTY: 711
WWW.DETROITMI.GOV**

To: Clerk's Office
From: The Department of Public Works
City Engineering Division
MapsandRecordsBureau@DetroitMI.Gov
(313) 224-3970

Petitioner:
Innovative Acquisitions LLC
1249 Washington Blvd.
Detroit, MI, 48226

On behalf of the above-mentioned petitioner the Department of Public Works: City Engineering Division is submitting a petition request for the action below. The petitioner has received a project consultation from the Department of Public Works: City Engineering Division and has been advised the following:

Type of action recommended:

Petition for encroachment into Grand River Avenue, adjacent to the property commonly known as 1249 Washington Blvd, for the purpose of installing a new blade sign.

Raven Wright
Supervisor of Maps and Records
Department of Public Works
City Engineering Division
313-224-3985



CITY OF DETROIT
DEPARTMENT OF PUBLIC WORKS
CITY ENGINEERING DIVISION

COLEMAN A. YOUNG MUNICIPAL CENTER
2 WOODWARD AVE. SUITE 601
DETROIT, MICHIGAN 48226
PHONE: (313) 224-3949 TTY: 711
WWW.DETROITMI.GOV



March 18, 2024

Honorable Detroit City Council
C/o Detroit City Clerk
200 Coleman A. Young Municipal Center
2 Woodward Avenue
Detroit, Michigan 48226

RE: Giffels Webster – Petition requesting encroachment of public right-of-way

Giffels Webster, 28 W. Adams, Suite 1200, Detroit, Michigan 48226 on behalf of Bedrock 630 Woodward Ave, Detroit, Michigan, 48226 respectfully requests an encroachment for a new blade sign projecting into the public right-of-way of Grand River Avenue between Washington Boulevard and the public alley to the west.

The above grade encroachment for the new blade sign begins 62.88 feet from the north-east corner of the 1249 Washington Blvd property line. The encroachment extends up to 1.50 feet in length into the Grand River Ave public right-of-way on the north side of the property. The blade sign has a width of 0.50 feet. The encroachment will extend from 8.67 feet above existing grade to 11.17 feet above existing grade and is 2.50 feet in total height.

Please reference the attached Exhibit showing the encroachment for more information.

Giffels Webster has been asked to facilitate the requested encroachments. If you should have any questions, please do not hesitate to contact me at (P) 313.962.4442 (M) 508.654.7845 or levans@giffelswebster.com.

Respectfully,

Leon Evans, PE
Project Manager



CITY OF DETROIT
DEPARTMENT OF PUBLIC WORKS
CITY ENGINEERING DIVISION

COLEMAN A. YOUNG MUNICIPAL CENTER
2 WOODWARD AVE. SUITE 601
DETROIT, MICHIGAN 48226
PHONE: (313) 224-3949 TTY: 711
WWW.DETROITMI.GOV

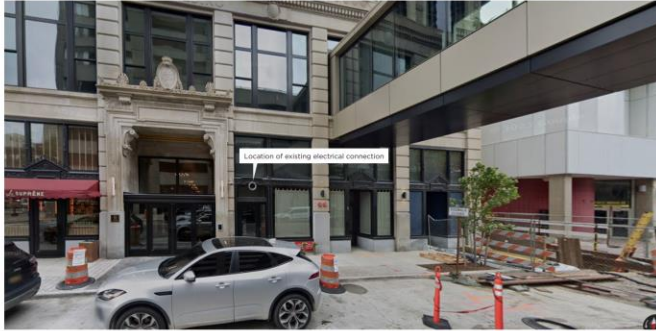


CITY OF DETROIT
DEPARTMENT OF PUBLIC WORKS
CITY ENGINEERING DIVISION

COLEMAN A. YOUNG MUNICIPAL CENTER
2 WOODWARD AVE. SUITE 601
DETROIT, MICHIGAN 48226
PHONE: (313) 224-3949 TTY: 711
WWW.DETROITMI.GOV

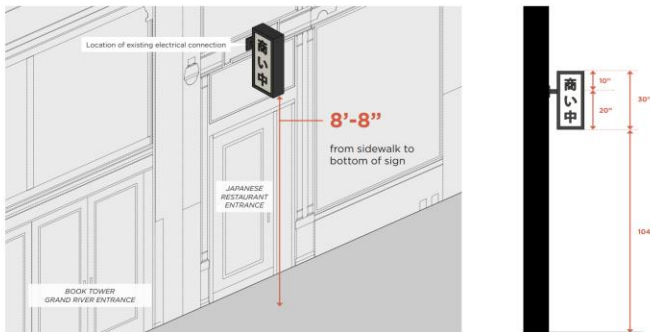
LOCATION: GRAND RIVER AVENUE ENTRY

Hiroki-San Blade Sign



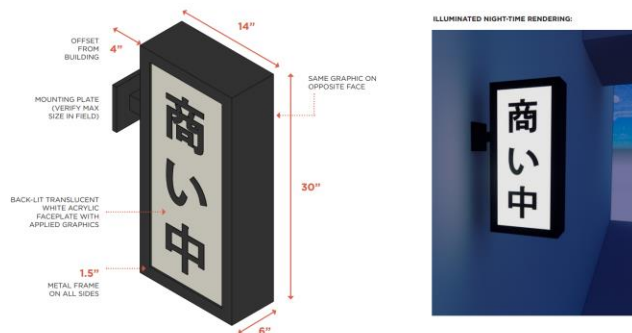
MOUNTING AND ATTACHMENT

Hiroki-San Blade Sign



MATERIALS AND DIMENSIONS

Hiroki-San Blade Sign



PERSPECTIVE VIEW FROM GRAND RIVER AVE

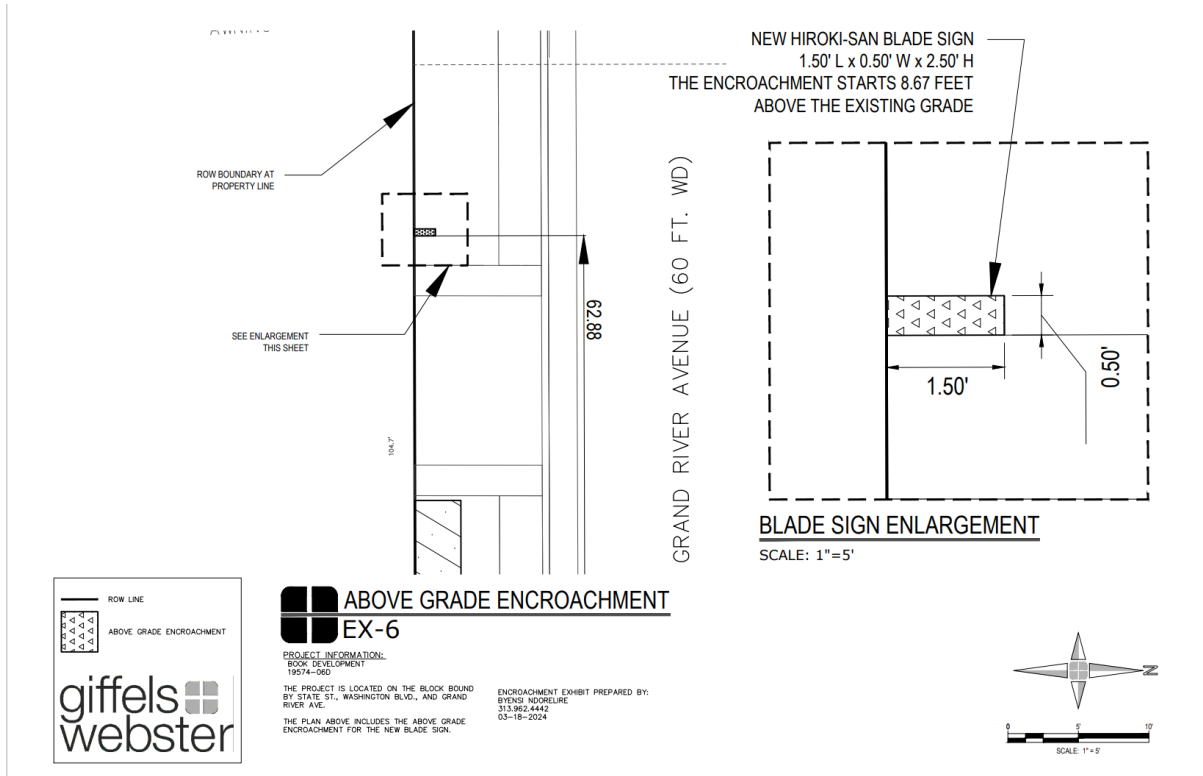
Hiroki-San Blade Sign





CITY OF DETROIT
DEPARTMENT OF PUBLIC WORKS
CITY ENGINEERING DIVISION

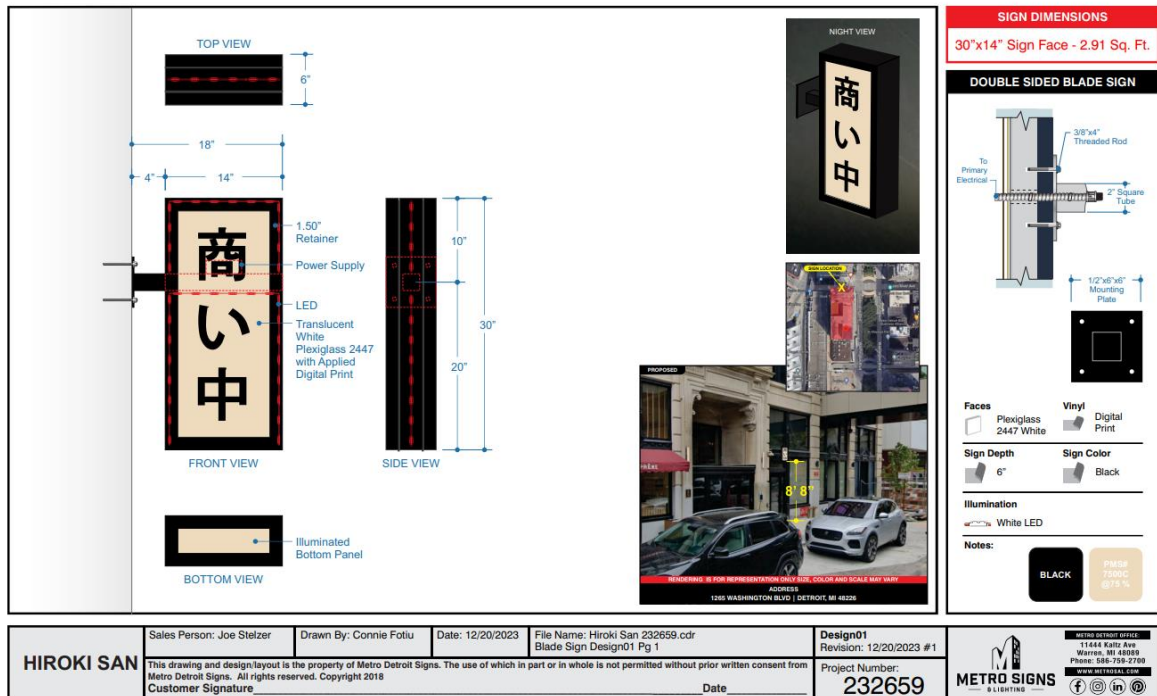
COLEMAN A. YOUNG MUNICIPAL CENTER
2 WOODWARD AVE. SUITE 601
DETROIT, MICHIGAN 48226
PHONE: (313) 224-3949 TTY: 711
WWW.DETROITMI.GOV





CITY OF DETROIT
DEPARTMENT OF PUBLIC WORKS
CITY ENGINEERING DIVISION

COLEMAN A. YOUNG MUNICIPAL CENTER
2 WOODWARD AVE. SUITE 601
DETROIT, MICHIGAN 48226
PHONE: (313) 224-3949 TTY: 711
WWW.DETROITMI.GOV

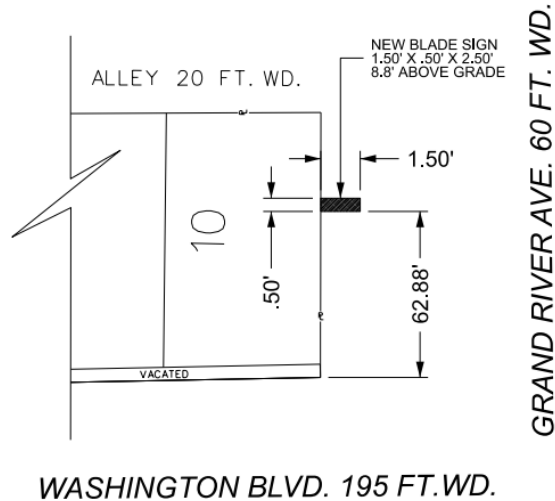




CITY OF DETROIT
DEPARTMENT OF PUBLIC WORKS
CITY ENGINEERING DIVISION

COLEMAN A. YOUNG MUNICIPAL CENTER
2 WOODWARD AVE. SUITE 601
DETROIT, MICHIGAN 48226
PHONE: (313) 224-3949 TTY: 711
WWW.DETROITMI.GOV

MAP-24-43



 - REQUEST ENCROACHMENT
(For New Blade Sign, 8.8' TO 11.3' above grade)

(FOR OFFICE USE ONLY)

CARTO 28 B

B					
A					
DESCRIPTION		SUBVISIONS			
DRAWN BY		CHECKED		DATE	
AP		LC			
DATE		APPROVED			
03-19-2024		JD			

REQUEST ENCROACHMENT
INTO GRAND RIVER AVE.
AT 1249 WASHINGTON BLVD.

CITY OF DETROIT
CITY ENGINEERING DIVISION
SURVEY BUREAU

JOB NO. 24-43

DRWG. NO.