

# City of Detroit

Janice M. Winfrey  
City Clerk

OFFICE OF THE CITY CLERK

Andre P. Gilbert II  
Deputy City Clerk

## DEPARTMENT PETITION REFERENCE COMMUNICATION

*To: The Department or Commission Listed Below*

*From: Janice M Winfrey, Detroit City Clerk*

---

The following petition is herewith referred to you for report and recommendation to the City Council.

In accordance with that body's directive, kindly return the same with your report in duplicate within four (4) weeks.

---

Petition No.	2024-126
Name of Petitioner	Harper Investment V LLC
Description of Petition	Petition for encroachment into W. Vernor Highway and Lawndale St., for the installation of four new above grade awnings.
Type of Petition	<b>Alley Vacation/Encroachment/Utility Vacation</b>
Submission Date	04/10/2024
Concerned Departments	Department of Public Works, Planning and Development Department, City Engineering Division
Petitioner Contact	Raven Wright Supervisor of Maps and Records Department of Public Works City Engineering Division 313-224-3985



**CITY OF DETROIT  
DEPARTMENT OF PUBLIC WORKS  
CITY ENGINEERING DIVISION**

**COLEMAN A. YOUNG MUNICIPAL CENTER  
2 WOODWARD AVE. SUITE 601  
DETROIT, MICHIGAN 48226  
PHONE: (313) 224-3949 TTY: 711  
WWW.DETROITMI.GOV**

---

To: Clerk's Office  
From: The Department of Public Works  
City Engineering Division  
MapsandRecordsBureau@DetroitMI.Gov  
(313) 224-3970

Petitioner:  
Harper Investment V LLC  
8631 W. Vernor Highway  
Detroit, MI, 48209

On behalf of the above-mentioned petitioner the Department of Public Works: City Engineering Division is submitting a petition request for the action below. The petitioner has received a project consultation from the Department of Public Works: City Engineering Division and has been advised the following:

Type of action recommended:

Petition for encroachment into W. Vernor Highway and Lawndale St., for the installation of four new above grade awnings.

Raven Wright  
Supervisor of Maps and Records  
Department of Public Works  
City Engineering Division  
313-224-3985



CITY OF DETROIT  
DEPARTMENT OF PUBLIC WORKS  
CITY ENGINEERING DIVISION

COLEMAN A. YOUNG MUNICIPAL CENTER  
2 WOODWARD AVE. SUITE 601  
DETROIT, MICHIGAN 48226  
PHONE: (313) 224-3949 TTY: 711  
WWW.DETROITMI.GOV





CITY OF DETROIT  
DEPARTMENT OF PUBLIC WORKS  
CITY ENGINEERING DIVISION

COLEMAN A. YOUNG MUNICIPAL CENTER  
2 WOODWARD AVE. SUITE 601  
DETROIT, MICHIGAN 48226  
PHONE: (313) 224-3949 TTY: 711  
WWW.DETROITMI.GOV

26

26.0

12

8

2

8.5

10.3

Heights & Elevations

UL LISTED

DAGHER SIGNS & GRAPHICS

**FRONT / W Vernor**

**PROPOSED SIGNAGE (FRONT)**  
8631 west vernor Hwy, Detroit 48209I

**FABRIC SAFE**

BUILDING: 26'w x 26' h  
PROPOSED SIGNS: 36.26 sqft



**CITY OF DETROIT**  
**DEPARTMENT OF PUBLIC WORKS**  
**CITY ENGINEERING DIVISION**

**COLEMAN A. YOUNG MUNICIPAL CENTER**  
**2 WOODWARD AVE. SUITE 601**  
**DETROIT, MICHIGAN 48226**  
**PHONE: (313) 224-3949 TTY: 711**  
**WWW.DETROITMI.GOV**

# AWNING DETAILS

**FABRIC SAFE**

SPRAY - ON Exterior / Interior  
 FIRE RETARDANT FOR COTTON,  
 CANVAS TENTS, CANVAS  
 AWNINGS, BURLAP, MUSLIN

ENVIRONMENTALLY FRIENDLY

**FABRIC SAFE 2**

FIRE RETARDANT FOR COTTON USE  
 UP TO 5 years or 100 cycles of use.  
 Repeat use is not recommended.

**Intertek**

Certificates of Compliance  
 NFPA 701 Method 1 & 2  
 ASTM E1363

**SOUTHWEST RESEARCH  
 INSTITUTE TESTING**

CR 16324 (F4.7) PAN  
 2532 AIR CALF 127.1  
 CAL TECH 127.1

DO NOT ALLOW PRODUCT TO FREEZE

**AWNING DETAILS**

terior Hwy, Detroit 48209

**BUILDING:**

95sqf' W x 27sqf' H

**DAGHER**  
SIGN & GRAPHICS

SALESMAN SIGNS | ARCHITECTURAL ELEMENTS  
 ELECTRONIC & LED | INTERIOR SIGNING | AWNINGS

22476 TELEGRAPH RD  
 SOUTHFIELD  
 MI 48033

PERMITTING & JOB STATUS: info@daghergraphics.com  
 DESIGN & CONSTRUCTION: design@daghergraphics.com  
 SALES & MAINTENANCE: info@daghergraphics.com

WWW.DAGHERGRAPHICS.COM

**UL LISTED**

120V CIRCUIT ARE REQUIRED FOR ALL SHOWS

**CONCEPTUAL**

Final installation & attachment methods to be determined per field conditions

**Attachment Methods:**

- Hanger Bolt
- Wood Stud
- Thru Bolt
- Metal Stud
- Recessed
- Toggle Bolt





**CITY OF DETROIT**  
**DEPARTMENT OF PUBLIC WORKS**  
**CITY ENGINEERING DIVISION**

**COLEMAN A. YOUNG MUNICIPAL CENTER**  
**2 WOODWARD AVE. SUITE 601**  
**DETROIT, MICHIGAN 48226**  
**PHONE: (313) 224-3949 TTY: 711**  
**WWW.DETROITMI.GOV**

98

Heights & Elevations

16.8 14.4 17.5 11.0

8.0 10.0

**SIDE / LAWNSDALE St.**

**PROPOSED SIGNAGE ( FACING LAWNSDALE )**  
 8631 west vernor Hwy, Detroit 48209

**FABRIC SAFE**

**BUILDING: 95sqf ' W x 27sqft' h H**  
**PROPOSED SIGNS: 44.66 sqft**

**DAGHER SIGNS & GRAPHICS**

WWW.DAGHERGRAPHICS.COM

**CONCEPTUAL SIGNAGE**

**UL LISTED**

**CONCEPTUAL SIGNAGE**

**UL LISTED**



CITY OF DETROIT  
DEPARTMENT OF PUBLIC WORKS  
CITY ENGINEERING DIVISION

COLEMAN A. YOUNG MUNICIPAL CENTER  
2 WOODWARD AVE. SUITE 601  
DETROIT, MICHIGAN 48226  
PHONE: (313) 224-3949 TTY: 711  
WWW.DETROITMI.GOV

**FRONT / W Vernor**  
PROPOSED SIGNAGE (FRONT)  
8631 west vernor Hwy, Detroit 48209I

BUILDING: 26'w x 26' h  
PROPOSED SIGNS: 36.26 sqft

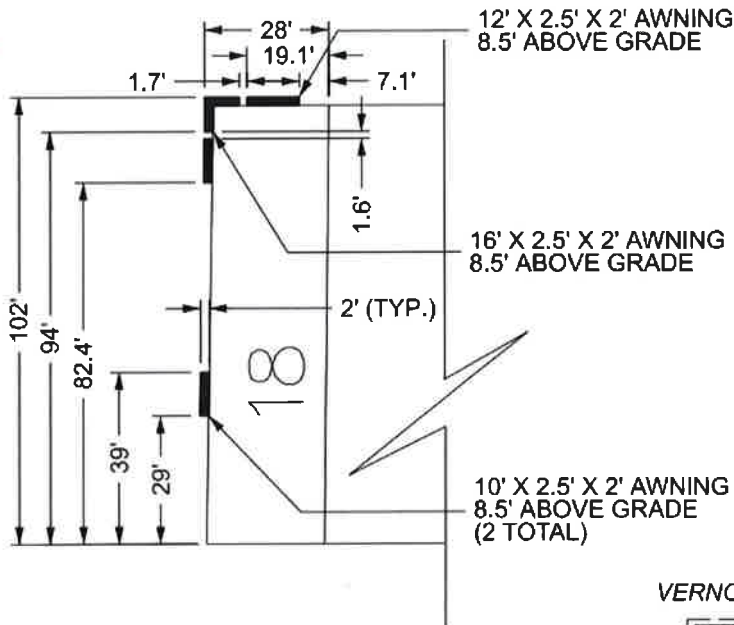
UL LISTED  
DAGHER SIGNS & GRAPHICS  
FABRIC SAFE  
Heights & EIE



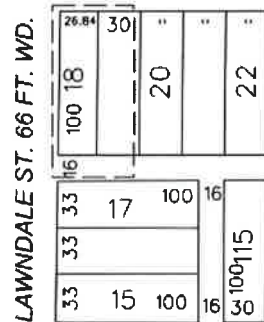
MAP-24-21



**LAWNDALE ST. 66 FT. WD. VERNOR ST. 66 FT. WD.**



VERNOR ST. 66 FT. WD.



WHITTAKER ST. 50 FT. WD.

**■** - REQUEST ENCROACHMENT  
(FOR NEW AWNINGS)

(FOR OFFICE USE ONLY)

CARTO 3 E

B				
A				
DESCRIPTION	DATE	CHKD	APPD	DATE
REVISIONS				
DRAWN BY	AP	CHECKED	LC	
DATE	03-05-2024	APPROVED	JD	

**REQUEST ENCROACHMENT  
INTO W. VERNOR HWY.  
AND LAWNDALE ST.  
AT 8631 W. VERNOR HWY.**

<b>CITY OF DETROIT</b>	
CITY ENGINEERING DIVISION	
SURVEY BUREAU	
JOB NO.	24-21
DRWG. NO.	