



CITY OF DETROIT
DEPARTMENT OF PUBLIC WORKS
CITY ENGINEERING DIVISION

COLEMAN A. YOUNG MUNICIPAL CENTER
2 WOODWARD AVE. SUITE 601
DETROIT, MICHIGAN 48226
PHONE: (313) 224-3949 TTY: 711
WWW.DETROITMI.GOV

To: Clerk's Office
From: The Department of Public Works
City Engineering Division
MapsandRecordsBureau@DetroitMI.Gov
(313) 224-3970

Petitioner:
Harper Investment V LLC
8631 W. Vernor Highway
Detroit, MI, 48209

On behalf of the above-mentioned petitioner the Department of Public Works: City Engineering Division is submitting a petition request for the action below. The petitioner has received a project consultation from the Department of Public Works: City Engineering Division and has been advised the following:

Type of action recommended:

Petition for encroachment into W. Vernor Highway and Lawndale St., for the installation of four new above grade awnings.

Raven Wright
Supervisor of Maps and Records
Department of Public Works
City Engineering Division
313-224-3985



CITY OF DETROIT
DEPARTMENT OF PUBLIC WORKS
CITY ENGINEERING DIVISION

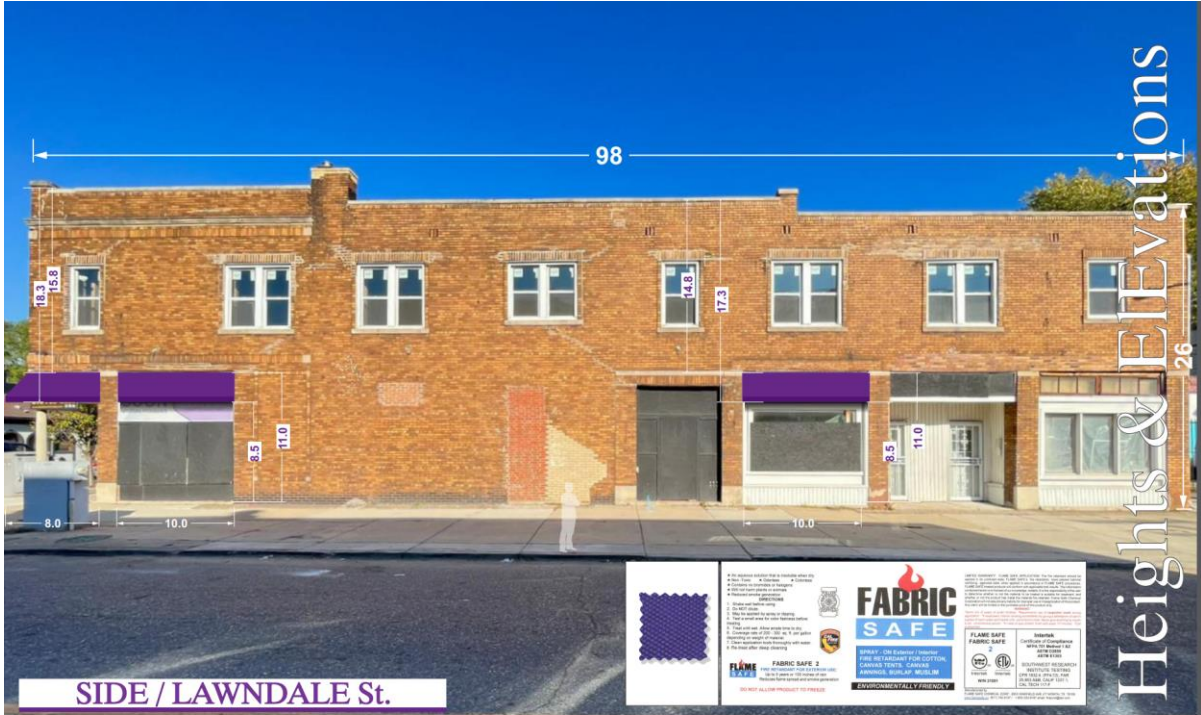
COLEMAN A. YOUNG MUNICIPAL CENTER
2 WOODWARD AVE. SUITE 601
DETROIT, MICHIGAN 48226
PHONE: (313) 224-3949 TTY: 711
WWW.DETROITMI.GOV





CITY OF DETROIT
DEPARTMENT OF PUBLIC WORKS
CITY ENGINEERING DIVISION

COLEMAN A. YOUNG MUNICIPAL CENTER
2 WOODWARD AVE. SUITE 601
DETROIT, MICHIGAN 48226
PHONE: (313) 224-3949 TTY: 711
WWW.DETROITMI.GOV



Heights & Elevations

SIDE / LAWNSDALE St.



FABRIC SAFE

FLAME SAFE FABRIC SAFE

UL LISTED

ENVIRONMENTALLY FRIENDLY

PROPOSED SIGNAGE (FACING LAWNSDALE)
8631 west vernor Hwy, Detroit 48209

BUILDING: 95sqft ' W x 27sqft' h H
PROPOSED SIGNS: 44.66 sqft



DAGHER SIGNS & GRAPHICS

BUILDING SIGNS | ARCHITECTURAL ELEMENTS
ELECTRONIC & LED | INTERIOR IMAGING | AWNINGS

22476 TELEGRAPH RD
SOUTHFIELD, MI 48033

PERMITTING & JOB STATUS: info@daghergraphics.com
DESIGN & ART DEPARTMENT: design@daghergraphics.com
SALES & MANAGEMENT: sales@daghergraphics.com

WWW.DAGHERGRAPHICS.COM

CONCEPTUAL

Final Installation & Placement Reviews to be determined per field conditions



120V CIRCUIT ARE REQUIRED FOR ALL SIGNS

Hangar Bolt	Masonry Lag Bolt
WOOD STUD	Reverse Thread Bolt
1/2" Bolt	1/2" Bolt
1/2" Bolt	1/2" Bolt



CITY OF DETROIT
DEPARTMENT OF PUBLIC WORKS
CITY ENGINEERING DIVISION

COLEMAN A. YOUNG MUNICIPAL CENTER
2 WOODWARD AVE. SUITE 601
DETROIT, MICHIGAN 48226
PHONE: (313) 224-3949 TTY: 711
WWW.DETROITMI.GOV

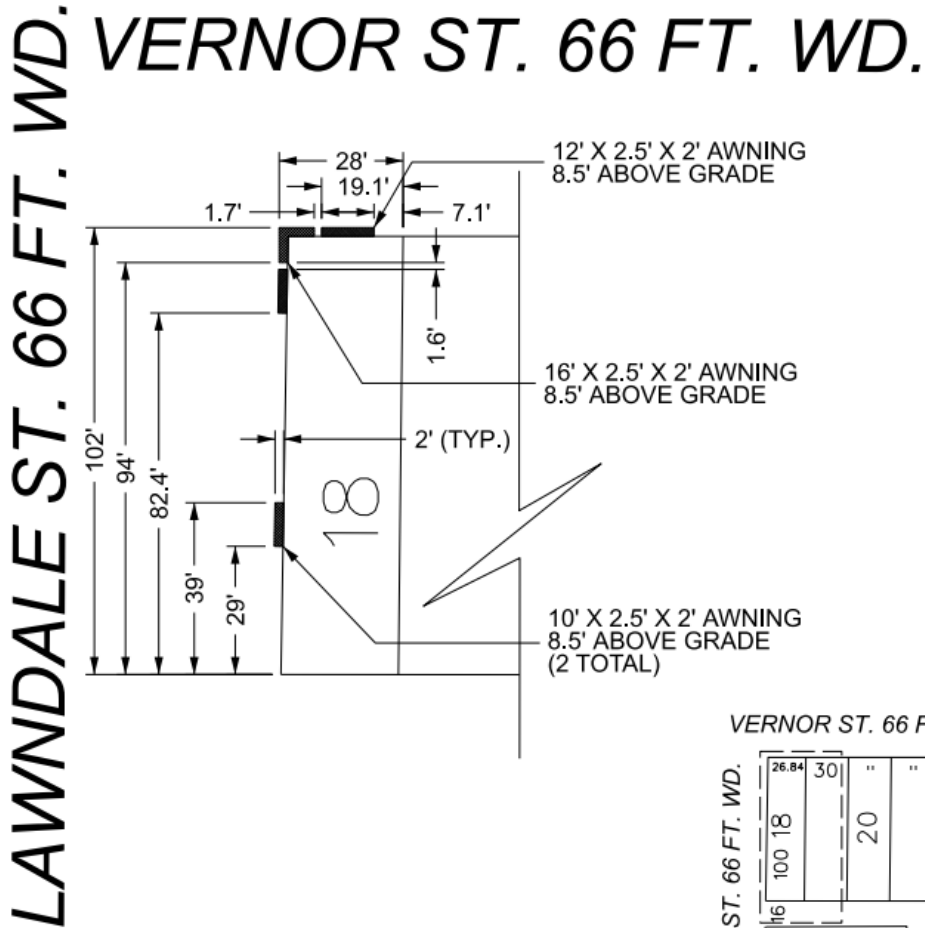




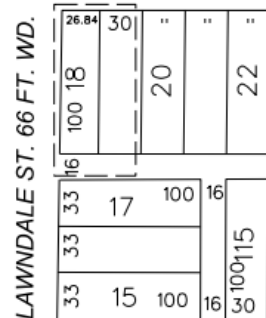
CITY OF DETROIT
 DEPARTMENT OF PUBLIC WORKS
 CITY ENGINEERING DIVISION

COLEMAN A. YOUNG MUNICIPAL CENTER
 2 WOODWARD AVE. SUITE 601
 DETROIT, MICHIGAN 48226
 PHONE: (313) 224-3949 TTY: 711
 WWW.DETROITMI.GOV

MAP-24-21



VERNOR ST. 66 FT. WD.



WHITTAKER ST. 50 FT. WD.

■ - REQUEST ENCROACHMENT
(FOR NEW AWNINGS)

(FOR OFFICE USE ONLY)

CARTO 3 E

B					
A					
	DESCRIPTION	DRWN	CHKD	APPD	DATE
	REVISIONS				
	DRAWN BY	AP	CHECKED	LC	
	DATE	03-05-2024	APPROVED	JD	

REQUEST ENCROACHMENT
 INTO W. VERNOR HWY.
 AND LAWNDALE ST.
 AT 8631 W. VERNOR HWY.

CITY OF DETROIT CITY ENGINEERING DIVISION SURVEY BUREAU	
JOB NO.	24-21
DRWG. NO.	