



CITY OF DETROIT
DEPARTMENT OF PUBLIC WORKS
CITY ENGINEERING DIVISION

COLEMAN A. YOUNG MUNICIPAL CENTER
2 WOODWARD AVE. SUITE 601
DETROIT, MICHIGAN 48226
PHONE: (313) 224-3949 TTY: 711
WWW.DETROITMI.GOV

To: Clerk's Office
From: The Department of Public Works
City Engineering Division
MapsandRecordsBureau@DetroitMI.Gov
(313) 224-3970

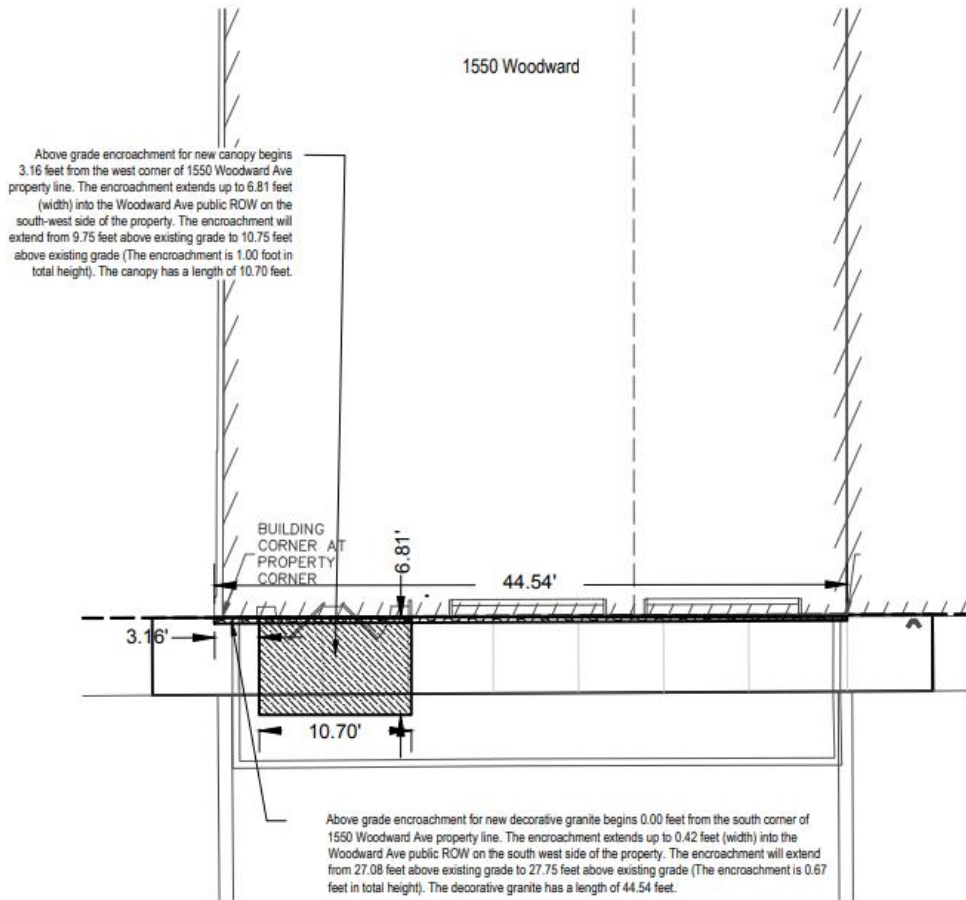
Petitioner:
1550 Webward, LLC
630 Woodward Avenue
Detroit, MI, 48226

On behalf of the above-mentioned petitioner the Department of Public Works: City Engineering Division is submitting a petition request for the action below. The petitioner has received a project consultation from the Department of Public Works: City Engineering Division and has been advised the following:

Type of action recommended:

Petition for encroachment into Woodward Ave. and the public alley adjacent to the property commonly known as 630 Woodward Ave., for the purpose of installing various new utilities, one gas meter, two new canopies, two frost slabs, one decorative granite façade, and four existing concrete curbs .


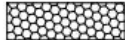
Raven Wright
Supervisor of Maps and Records
Department of Public Works
City Engineering Division
313-224-3985

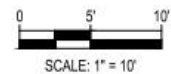


WOODWARD AVENUE (120 FT. WD.)

EXHIBIT A

LEGEND

-  PROPOSED ABOVE GROUND ENCROACHMENT FOR NEW CANOPY INTO WOODWARD AVE.
-  PROPOSED ABOVE GROUND ENCROACHMENT FOR NEW DECORATIVE GRANITE



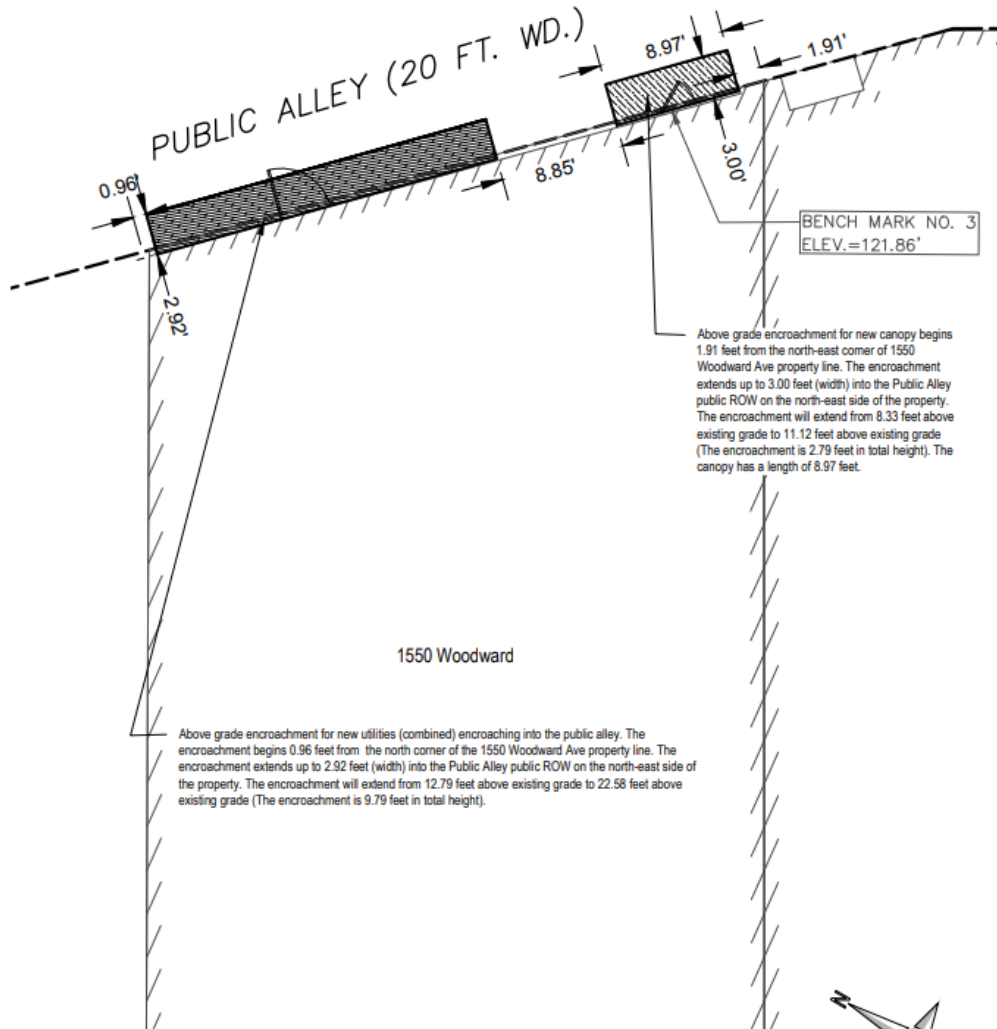


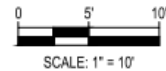


EXHIBIT B

LEGEND

-  PROPOSED ABOVE GROUND ENCROACHMENT FOR NEW CANOPY INTO PUBLIC ALLEY.
-  PROPOSED ABOVE GROUND ENCROACHMENT FOR NEW UTILITIES INTO PUBLIC ALLEY (WATER HEATER EXHAUST GRILL, GREASE EXHAUST FANS, RELIEF AIR LOUVER COMBINED).





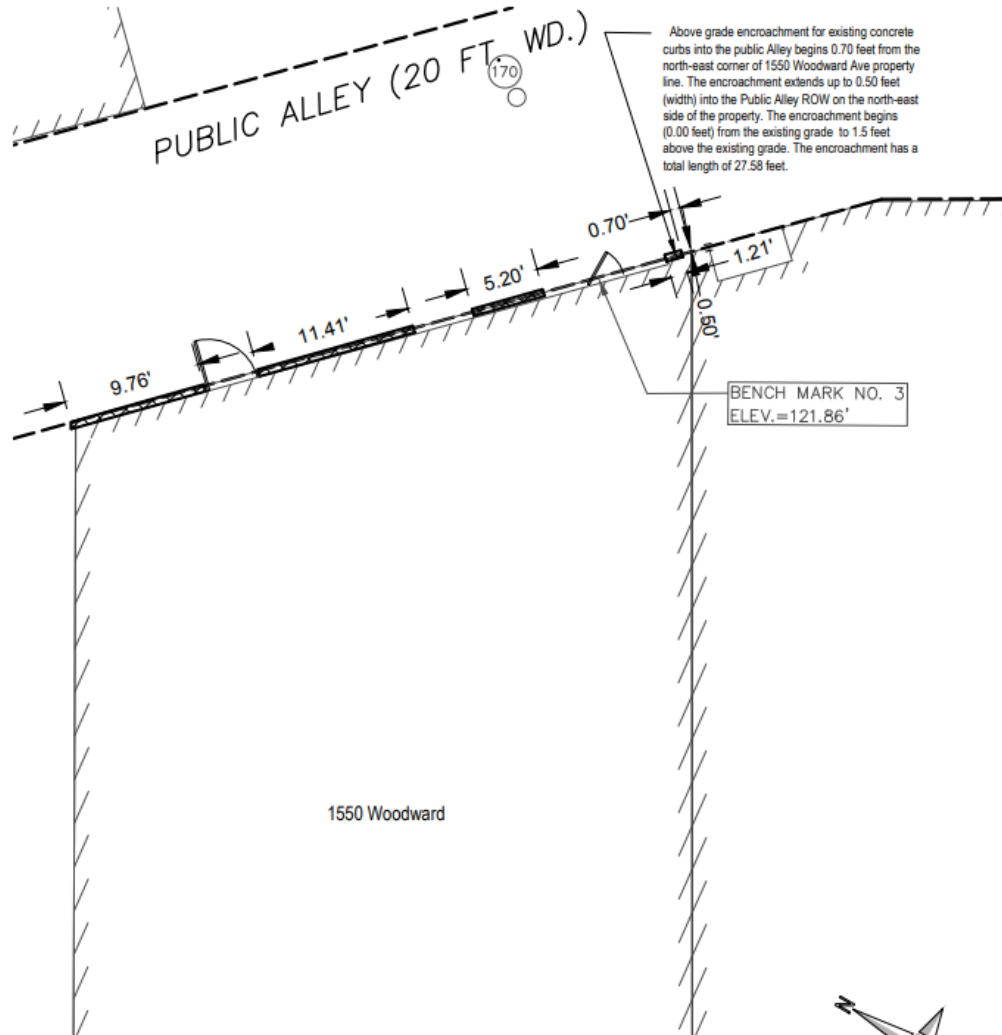
CITY OF DETROIT
DEPARTMENT OF PUBLIC WORKS
CITY ENGINEERING DIVISION

COLEMAN A. YOUNG MUNICIPAL CENTER
2 WOODWARD AVE. SUITE 601
DETROIT, MICHIGAN 48226
PHONE: (313) 224-3949 TTY: 711
WWW.DETROITMI.GOV



CITY OF DETROIT
 DEPARTMENT OF PUBLIC WORKS
 CITY ENGINEERING DIVISION

COLEMAN A. YOUNG MUNICIPAL CENTER
 2 WOODWARD AVE. SUITE 601
 DETROIT, MICHIGAN 48226
 PHONE: (313) 224-3949 TTY: 711
 WWW.DETROITMI.GOV



LEGEND


 PROPOSED ABOVE GROUND ENCROACHMENT FOR EXISTING CONCRETE CURB INTO PUBLIC ALLEY.

EXHIBIT C



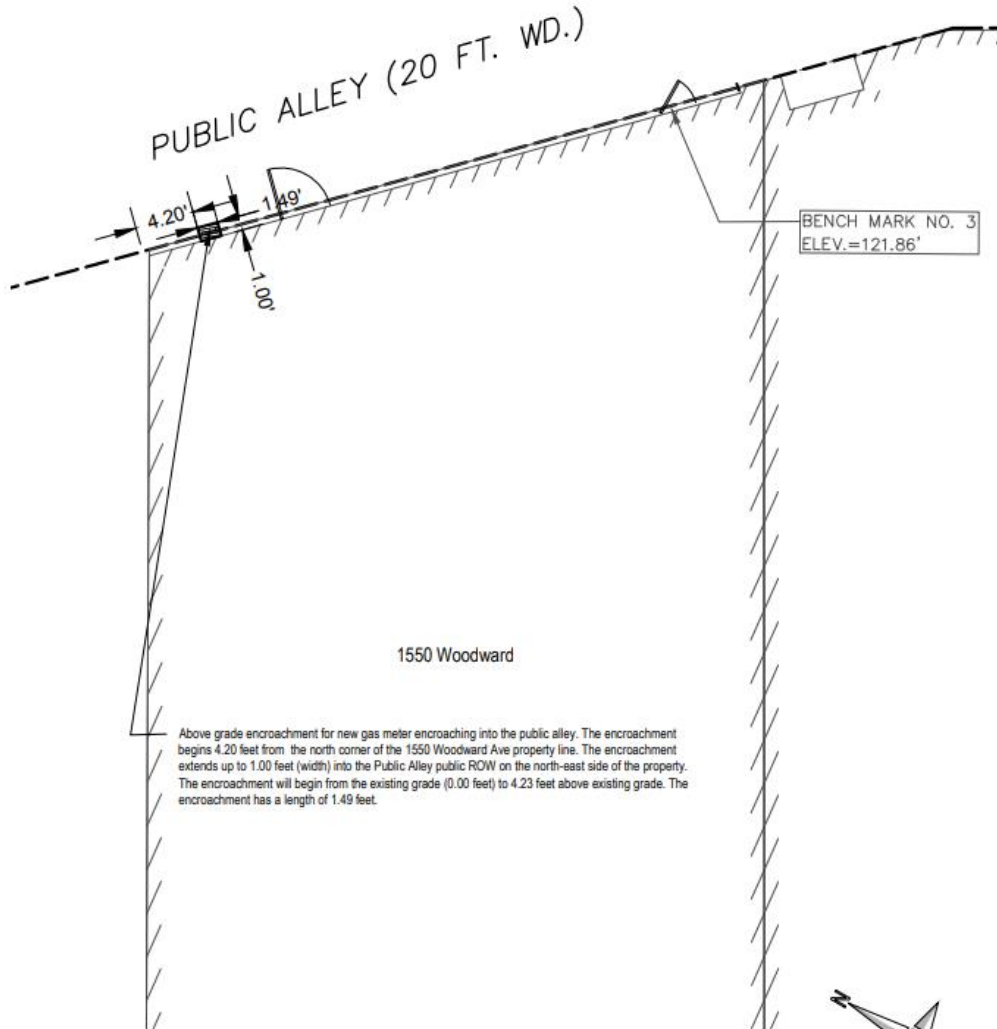
SCALE: 1" = 10'

giffels webster
 Engineers Surveyors Planners
 Landscape Architects



CITY OF DETROIT
 DEPARTMENT OF PUBLIC WORKS
 CITY ENGINEERING DIVISION

COLEMAN A. YOUNG MUNICIPAL CENTER
 2 WOODWARD AVE. SUITE 601
 DETROIT, MICHIGAN 48226
 PHONE: (313) 224-3949 TTY: 711
 WWW.DETROITMI.GOV



LEGEND


 PROPOSED ABOVE GROUND ENCROACHMENT FOR NEW GAS METER.

EXHIBIT D



0 5' 10'
 SCALE: 1" = 10'

giffels
webster
 Engineers Surveyors Planners
 Landscape Architects



CITY OF DETROIT
 DEPARTMENT OF PUBLIC WORKS
 CITY ENGINEERING DIVISION

COLEMAN A. YOUNG MUNICIPAL CENTER
 2 WOODWARD AVE. SUITE 601
 DETROIT, MICHIGAN 48226
 PHONE: (313) 224-3949 TTY: 711
 WWW.DETROITMI.GOV

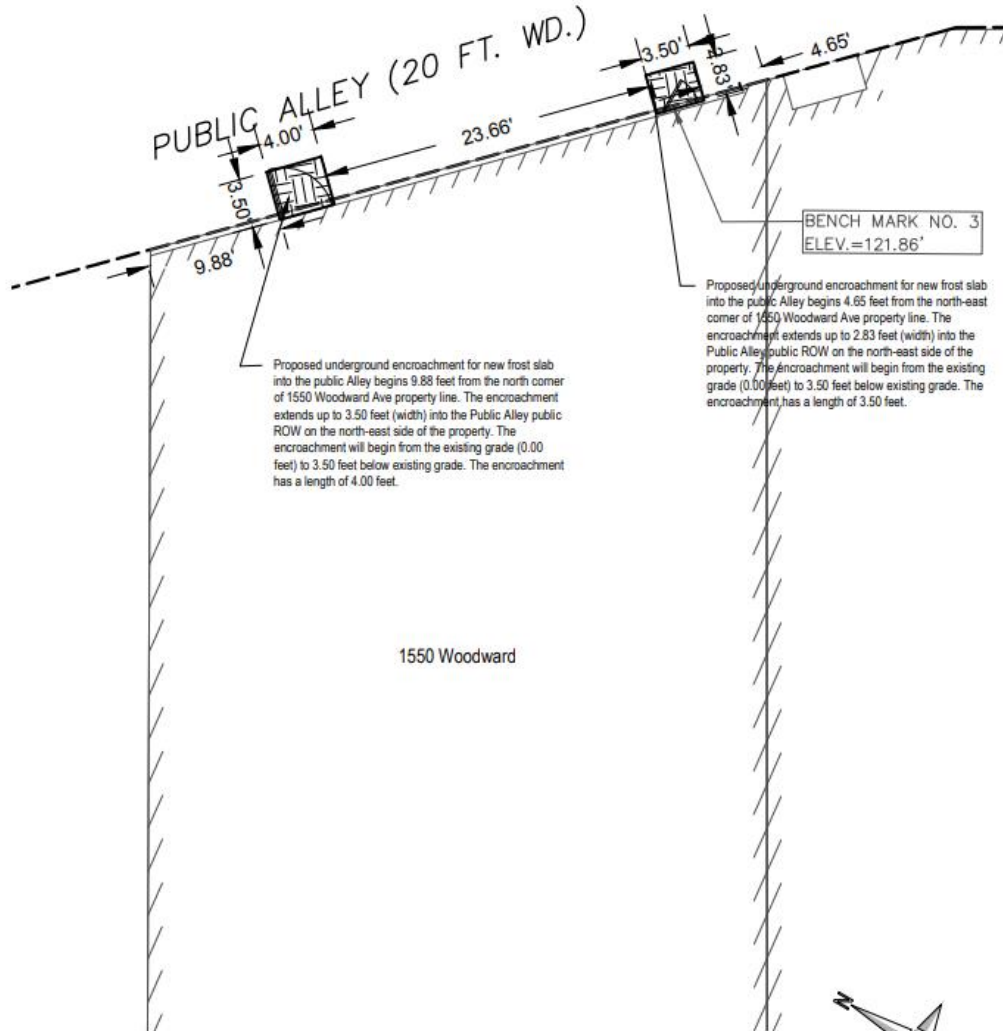



EXHIBIT E

LEGEND

 PROPOSED UNDERGROUND ENCROACHMENT FOR A FROST SLAB INTO PUBLIC ALLEY RIGHT-OF-WAY. ENCROACHMENT FROM 0' ON GRADE TO 3.50' BELOW GRADE.



giffels webster
 Engineers Surveyors Planners
 Landscape Architects



CITY OF DETROIT
DEPARTMENT OF PUBLIC WORKS
CITY ENGINEERING DIVISION

COLEMAN A. YOUNG MUNICIPAL CENTER
2 WOODWARD AVE. SUITE 601
DETROIT, MICHIGAN 48226
PHONE: (313) 224-3949 TTY: 711
WWW.DETROITMI.GOV



December 1, 2023

Honorable Detroit City Council
C/o Detroit City Clerk
200 Coleman A. Young Municipal Center
2 Woodward Avenue
Detroit, Michigan 48226

RE: Giffels Webster - Petition requesting encroachments of public rights-of-way.

Giffels Webster, 28 W. Adams, Suite 1200, Detroit, Michigan 48226 on behalf of 1550 Webward Avenue LLC, 630 Woodward Avenue, Detroit, Michigan, 48226, respectfully requests the following encroachments into the public rights-of-way in the block bounded by Woodward Avenue to the west, Grand River Avenue to the south, the public alley to the east, and Witherell Street to the north.

- Woodward Avenue
 - One (1) new canopy
 - One (1) new decorative granite facade

- Public Alley
 - One (1) new canopy
 - Four (4) existing concrete curbs
 - New utilities
 - One (1) water heater exhaust grill
 - Two (2) grease exhaust fans
 - One (1) relief air louver
 - One (1) gas meter
 - Two (2) Frost slabs (underground encroachment)

Please reference the attached Exhibits (A, B, C and D) showing the above grade encroachments, and Exhibit E showing the underground encroachments for more information.

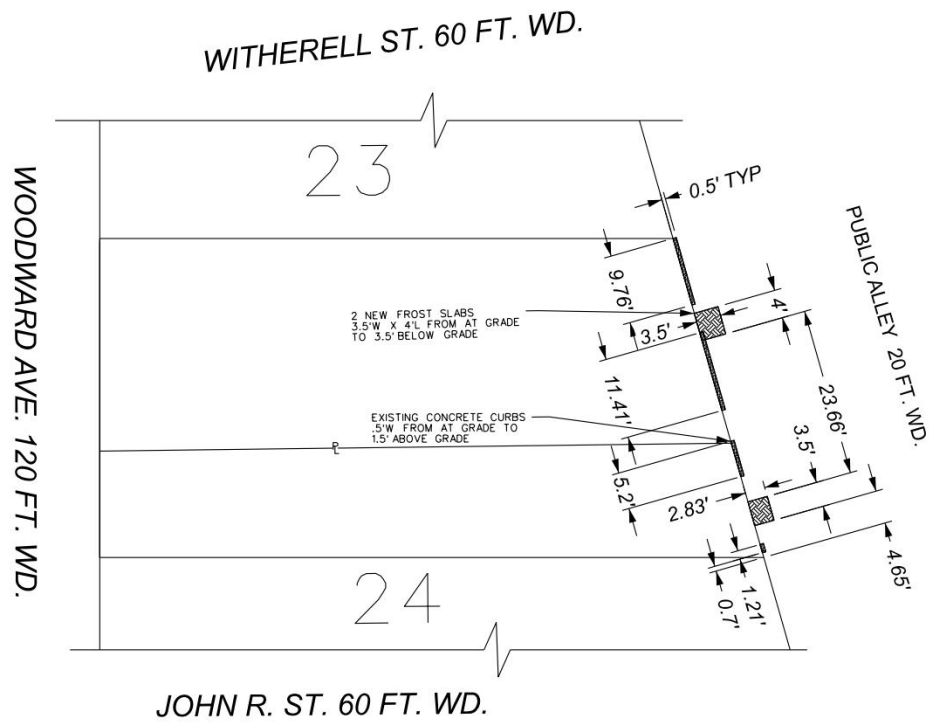
If you should have any questions, please do not hesitate to contact Leon Evans at (P) 313.962.4442 or at levans@giffelswebster.com.

Respectfully,
plot

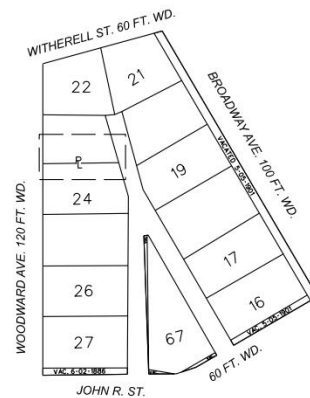
Leon Evans P.E.,
Project Manager
Giffels Webster



MAP-23-132



- REQUEST ENCROACHMENT
(For Two New Frost Slabs)
- REQUEST ENCROACHMENT
(For Existing Concrete Curbs)



(FOR OFFICE USE ONLY)

CARTO 28 A

B					
A					
DESCRIPTION	DRWN	CHKD	APPD	DATE	
REVISIONS					
DRAWN BY	LC	CHECKED	AP		
DATE	02-15-2024	APPROVED	JD		

**REQUEST ENCROACHMENTS
 AT 1550 WOODWARD AVENUE**

CITY OF DETROIT
 CITY ENGINEERING DIVISION
 SURVEY BUREAU

JOB NO. 23-132
 DRWG. NO. 23-132_2



CITY OF DETROIT
DEPARTMENT OF PUBLIC WORKS
CITY ENGINEERING DIVISION

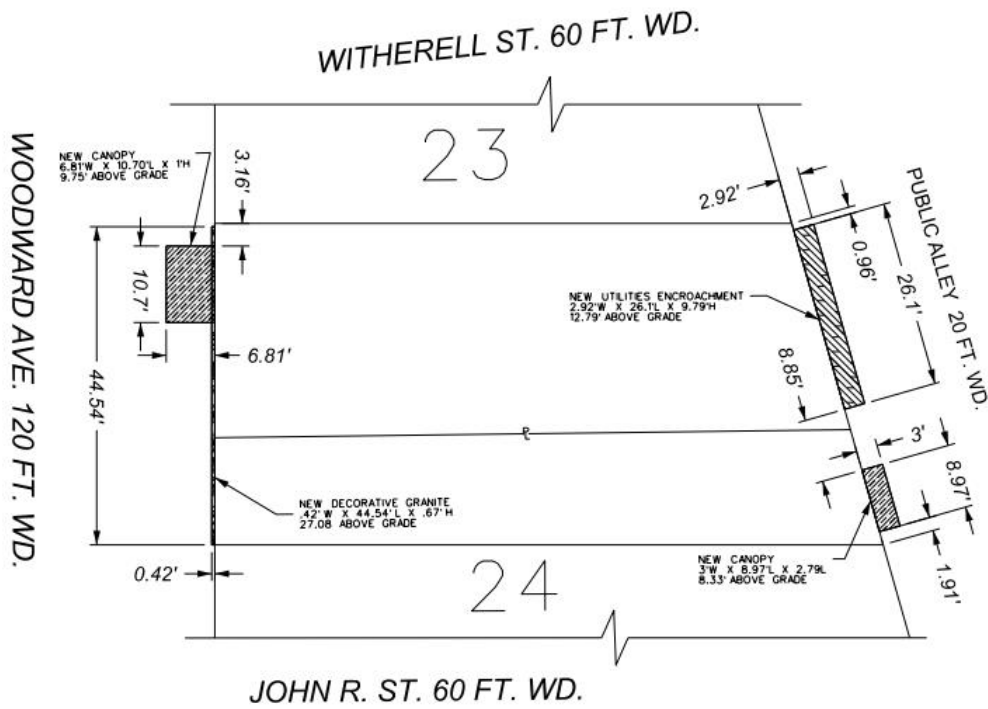
COLEMAN A. YOUNG MUNICIPAL CENTER
2 WOODWARD AVE. SUITE 601
DETROIT, MICHIGAN 48226
PHONE: (313) 224-3949 TTY: 711
WWW.DETROITMI.GOV



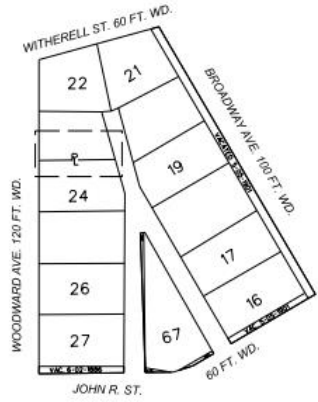
CITY OF DETROIT
DEPARTMENT OF PUBLIC WORKS
CITY ENGINEERING DIVISION

COLEMAN A. YOUNG MUNICIPAL CENTER
2 WOODWARD AVE. SUITE 601
DETROIT, MICHIGAN 48226
PHONE: (313) 224-3949 TTY: 711
WWW.DETROITMI.GOV

MAP-23-132



- REQUEST ENCROACHMENT (For Two Above Grade Canopies)
- REQUEST ENCROACHMENT (For Above Grade Decorative Granite)
- REQUEST ENCROACHMENT (For Above Grade Combined Utilities)



(FOR OFFICE USE ONLY)

CARTO 28 A

B					
A					
REVISIONS					
DESCRIPTION	DRWN	CHKD	APPD	DATE	
DRAWN BY	LC	CHECKED	AP		
DATE	02-15-2024	APPROVED	JD		

REQUEST ENCROACHMENTS
AT 1550 WOODWARD AVENUE

CITY OF DETROIT CITY ENGINEERING DIVISION SURVEY BUREAU	
JOB NO.	23-132
DRWG. NO.	23-132_1



CITY OF DETROIT
DEPARTMENT OF PUBLIC WORKS
CITY ENGINEERING DIVISION

COLEMAN A. YOUNG MUNICIPAL CENTER
2 WOODWARD AVE. SUITE 601
DETROIT, MICHIGAN 48226
PHONE: (313) 224-3949 TTY: 711
WWW.DETROITMI.GOV
