



CITY OF DETROIT
DEPARTMENT OF PUBLIC WORKS
CITY ENGINEERING DIVISION

COLEMAN A. YOUNG MUNICIPAL CENTER
2 WOODWARD AVE. SUITE 601
DETROIT, MICHIGAN 48226
PHONE: (313) 224-3949 TTY: 711
WWW.DETROITMI.GOV

To: Clerk's Office
From: The Department of Public Works
City Engineering Division
MapsandRecordsBureau@DetroitMI.Gov
(313) 224-3970

Petitioner:
CM Brooklyn LLC
1441 Brooklyn Street
Detroit, MI, 48226

On behalf of the above-mentioned petitioner the Department of Public Works: City Engineering Division is submitting a petition request for the action below. The petitioner has received a project consultation from the Department of Public Works: City Engineering Division and has been advised the following:

Type of action recommended:

The addition of a 4' x 15' awning on the south face of the building located at 1441 Brooklyn St. that will encroach into the public alley. The building also has an existing 3' x 6' awning on Brooklyn St.

Raven Wright
Supervisor of Maps and Records
Department of Public Works
City Engineering Division
313-224-3985



CITY OF DETROIT
DEPARTMENT OF PUBLIC WORKS
CITY ENGINEERING DIVISION

COLEMAN A. YOUNG MUNICIPAL CENTER
2 WOODWARD AVE. SUITE 601
DETROIT, MICHIGAN 48226
PHONE: (313) 224-3949 TTY: 711
WWW.DETROITMI.GOV



CITY OF DETROIT
DEPARTMENT OF PUBLIC WORKS
CITY ENGINEERING DIVISION

COLEMAN A. YOUNG MUNICIPAL CENTER
2 WOODWARD AVE. SUITE 601
DETROIT, MICHIGAN 48226
PHONE: (313) 224-3949 TTY: 711
WWW.DETROITMI.GOV



Monument Engineering Group Associates, Inc.

Developing Lifelong Relationships
monumentengineering.com

298 Veterans Drive, Fowlerville, MI 48836 (HQ)
(517) 223-3512



City of Detroit
Right of Way Management

RE: Kaul Glove Building
1441 Brooklyn Street
Right of Way Encroachment Request

To Whom it May Concern,

The owner of the above-mentioned property is doing extensive renovations to the existing building (Kaul Glove Building) at 1441 Brooklyn Street. Part of those renovations will be the addition of a 4' x 15' awning on the south face of the building. As the building is the parcel, any exterior additions will be encroaching onto adjoining parcels. In this case into the existing public alley behind the building which is owned by the City of Detroit.

The building also has an existing 3' x 6' awning on Brooklyn which will need a right of way encroachment approval.

The owner of the building is:
CM Brooklyn
Rocky Lala rocky@methodevelop.com
2857 E Grand Boulevard, Suite 106
Detroit, MI 49202

• Fowlerville

• Portage

• Traverse City



CITY OF DETROIT
DEPARTMENT OF PUBLIC WORKS
CITY ENGINEERING DIVISION

COLEMAN A. YOUNG MUNICIPAL CENTER
2 WOODWARD AVE. SUITE 601
DETROIT, MICHIGAN 48226
PHONE: (313) 224-3949 TTY: 711
WWW.DETROITMI.GOV





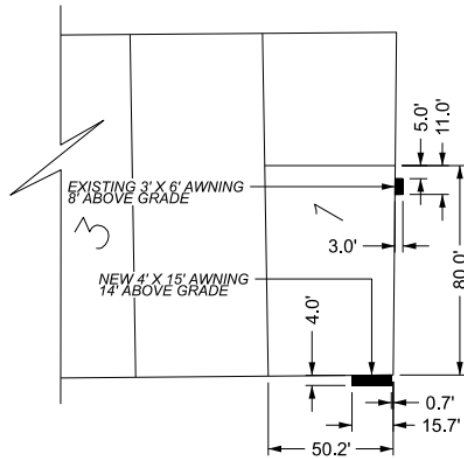
CITY OF DETROIT
 DEPARTMENT OF PUBLIC WORKS
 CITY ENGINEERING DIVISION

COLEMAN A. YOUNG MUNICIPAL CENTER
 2 WOODWARD AVE. SUITE 601
 DETROIT, MICHIGAN 48226
 PHONE: (313) 224-3949 TTY: 711
 WWW.DETROITMI.GOV

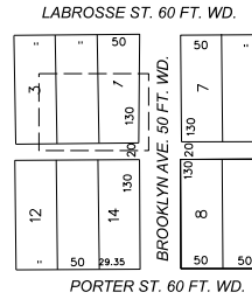
MAP-24-37

LABROSSE ST. 60 FT. WD.

BROOKLYN AVE. 50 FT. WD.



PUBLIC ALLEY 20 FT. WD.



- REQUEST ENCROACHMENT

(FOR OFFICE USE ONLY)

CARTO 28 C

| B | | | | |
|-------------|------------|----------|-------|------|
| A | | | | |
| DESCRIPTION | DRAWN | CHECKED | APPR. | DATE |
| REVISIONS | | | | |
| DRAWN BY | AP | CHECKED | LC | |
| DATE | 03-12-2024 | APPROVED | JD | |

REQUEST ENCROACHMENT
 INTO BROOKLYN AVE. 50 FT. WD.,
 AND PUBLIC ALLEY 20 FT. WD.
 AT 1441 BROOKLYN AVE.

CITY OF DETROIT
 CITY ENGINEERING DIVISION
 SURVEY BUREAU

JOB NO. 24-37

DRWG. NO.