

City of Detroit

Janice M. Winfrey
City Clerk

OFFICE OF THE CITY CLERK

Andre P. Gilbert II
Deputy City Clerk

DEPARTMENT PETITION REFERENCE COMMUNICATION

To: The Department or Commission Listed Below

From: Janice M Winfrey, Detroit City Clerk

The following petition is herewith referred to you for report and recommendation to the City Council.

In accordance with that body's directive, kindly return the same with your report in duplicate within four (4) weeks.

| | |
|-------------------------|-------------------------------------------------------------------------------------------------------------------------------------------------------------------------------------|
| Petition No. | 2024-108 |
| Name of Petitioner | Gilly's |
| Description of Petition | Petition for encroachment into Woodward Ave., for an illuminated wall sign for an illuminated wall sign for Gilly's |
| Type of Petition | Alley Vacation/Encroachment/Utility Vacation |
| Submission Date | 03/27/2024 |
| Concerned Departments | Department of Public Works, Planning and Development Department, City Engineering Division |
| Petitioner Contact | Kevin Deters Metro Detroit Signs 11444 Kaltz Ave. Warren, MI 48089 (P) 586-759-2700 kdeters@metrodetroitsigns.com |



**CITY OF DETROIT
DEPARTMENT OF PUBLIC WORKS
CITY ENGINEERING DIVISION**

**COLEMAN A. YOUNG MUNICIPAL CENTER
2 WOODWARD AVE. SUITE 601
DETROIT, MICHIGAN 48226
PHONE: (313) 224-3949 TTY: 711
WWW.DETROITMI.GOV**

To: Clerk's Office
From: The Department of Public Works
City Engineering Division
MapsandRecordsBureau@DetroitMI.Gov
(313) 224-3970

Petitioner:
Gilly's
1550 Woodward Ave.
Detroit, MI, 48226

On behalf of the above-mentioned petitioner the Department of Public Works: City Engineering Division is submitting a petition request for the action below. The petitioner has received a project consultation from the Department of Public Works: City Engineering Division and has been advised the following:

Type of action recommended:

Petition for encroachment into Woodward Ave., for an illuminated wall sign for an illuminated wall sign for Gilly's.

Raven Wright
Supervisor of Maps and Records
Department of Public Works
City Engineering Division
313-224-3985



**CITY OF DETROIT
DEPARTMENT OF PUBLIC WORKS
CITY ENGINEERING DIVISION**

**COLEMAN A. YOUNG MUNICIPAL CENTER
2 WOODWARD AVE. SUITE 601
DETROIT, MICHIGAN 48226
PHONE: (313) 224-3949 TTY: 711
WWW.DETROITMI.GOV**



CITY OF DETROIT
 DEPARTMENT OF PUBLIC WORKS
 CITY ENGINEERING DIVISION

COLEMAN A. YOUNG MUNICIPAL CENTER
 2 WOODWARD AVE. SUITE 601
 DETROIT, MICHIGAN 48226
 PHONE: (313) 224-3949 TTY: 711
 WWW.DETROITMI.GOV

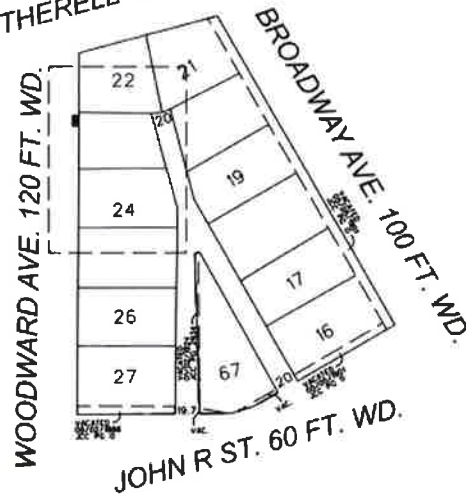
MAP-24-29



WOODWARD AVE. 120 FT. WD.



WITHERELL ST. 60 FT. WD.



 - REQUEST ENCROACHMENT
 (FOR AN ILLUMINATED WALL SIGN,
 8.75' TO 11' ABOVE GRADE)

(FOR OFFICE USE ONLY)

CARTO 29 A

| | | | | | |
|---|-------------|------------|----------|------|------|
| B | | | | | |
| A | | | | | |
| | DESCRIPTION | DESN | CHKD | APPD | DATE |
| | REVISIONS | | | | |
| | DRAWN BY | TS | CHECKED | AP | |
| | DATE | 03-05-2024 | APPROVED | JD | |

REQUEST ENCROACHMENT
 INTO WOODWARD AVE.
 AT 1550 WOODWARD AVE.

CITY OF DETROIT
 CITY ENGINEERING DIVISION
 SURVEY BUREAU
 JOB NO. 24-29
 DRWG. NO.



CITY OF DETROIT
DEPARTMENT OF PUBLIC WORKS
CITY ENGINEERING DIVISION

COLEMAN A. YOUNG MUNICIPAL CENTER
2 WOODWARD AVE. SUITE 601
DETROIT, MICHIGAN 48226
PHONE: (313) 224-3949 TTY: 711
WWW.DETROITMI.GOV



DATE: 3/1/24
TO: City of Detroit
FROM: Kevin Deters
Metro Detroit Signs
RE: Gilly's wall sign
1550 Woodward Ave
SGN2024-00006

We are applying for an encroachment for an illuminated wall sign for "Gilly's" on the west elevation as follows:

Wall Sign SGN2024-00006 - Gilly's

- dimensions are 1.729' x 4.6' = 7.9 sq feet
- acrylic letters
- internally illuminated with LEDs
- on the west elevation facing Woodward Ave.
- 11 foot underclearance

Feel free to call me at (586)759-2700 if anything else is needed. Thank you for your assistance.

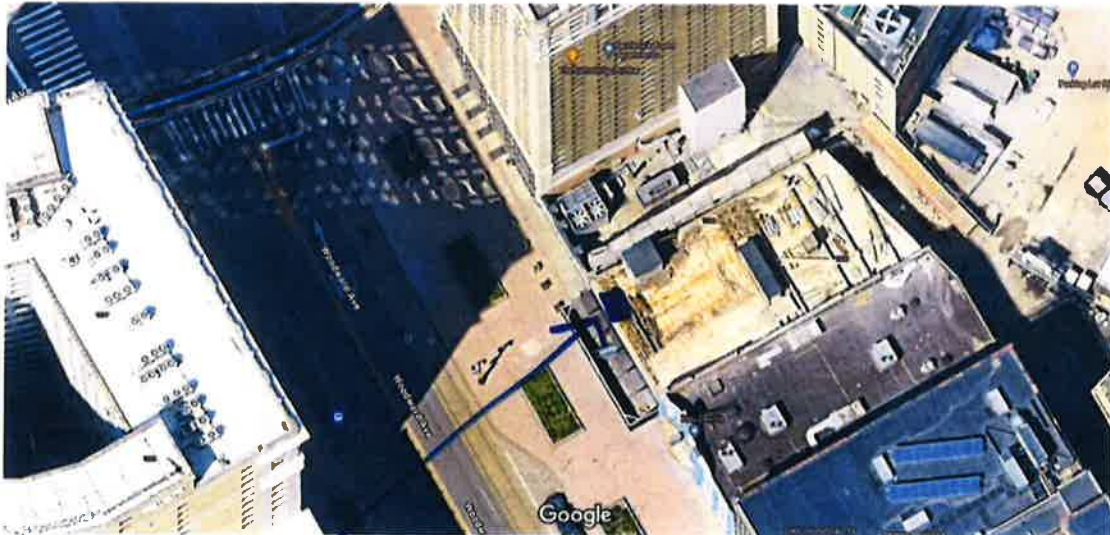
Kevin Deters 3-1-24




1/18/24, 2:56 PM

Google Maps

Google Maps  Site plan - Bldg is under construction



 = Proposed wall sign
for Gilly's on the
west elevation

Map data ©2024, Map data ©2024 Google 20 ft

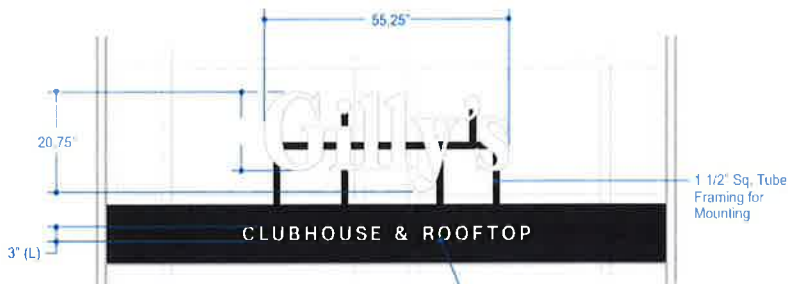


CITY OF DETROIT
DEPARTMENT OF PUBLIC WORKS
CITY ENGINEERING DIVISION

COLEMAN A. YOUNG MUNICIPAL CENTER
2 WOODWARD AVE. SUITE 601
DETROIT, MICHIGAN 48226
PHONE: (313) 224-3949 TTY: 711
WWW.DETROITMI.GOV

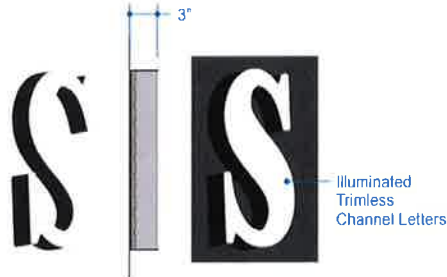
Trimless SGN2024-00006 - wall sign on the west elevation is 1.729' x 4.6' = 7.9 sq feet
 11' underclearance / west elevation is 33.416' high x 42' wide = 1,403.4 sq feet

SIGN DIMENSIONS
 20.75"x55.25" Overall - 7.96 Sq. Ft.



Canopy to be done by others

1/2" Flat Cut Aluminum Painted White Non-Illuminated



| | | | | | | | |
|----------------|--------------------------------------------------------------------------------------------------------------------------------------------------------------------------------------------------------------------------|-----------------------|------------------|-------------------------------|---------------|--|--|
| Gilly's | Sales Person: Eric Ropelewski | Drawn By: Connie Fotu | Date: 12/11/2023 | File Name: Gilly's 232194.cdr | Design03 | | |
| | This drawing and design layout is the property of Metro Detroit Signs. The use of which in part or in whole is not permitted without prior written consent from Metro Detroit Signs. All rights reserved. Copyright 2018 | | | | Revision: XXX | | |
| | Customer Signature | | Date | | | | |



CITY OF DETROIT
DEPARTMENT OF PUBLIC WORKS
CITY ENGINEERING DIVISION

COLEMAN A. YOUNG MUNICIPAL CENTER
2 WOODWARD AVE. SUITE 601
DETROIT, MICHIGAN 48226
PHONE: (313) 224-3949 TTY: 711
WWW.DETROITMI.GOV

