



CITY OF DETROIT
DEPARTMENT OF PUBLIC WORKS
CITY ENGINEERING DIVISION

COLEMAN A. YOUNG MUNICIPAL CENTER
2 WOODWARD AVE. SUITE 601
DETROIT, MICHIGAN 48226
PHONE: (313) 224-3949 TTY: 711
WWW.DETROITMI.GOV

To: Clerk's Office
From: The Department of Public Works
City Engineering Division
MapsandRecordsBureau@DetroitMI.Gov
(313) 224-3970

Petitioner:
Gilly's
1550 Woodward Ave.
Detroit, MI, 48226

On behalf of the above-mentioned petitioner the Department of Public Works: City Engineering Division is submitting a petition request for the action below. The petitioner has received a project consultation from the Department of Public Works: City Engineering Division and has been advised the following:

Type of action recommended:

Petition for encroachment into Woodward Ave., for an illuminated wall sign for an illuminated wall sign for Gilly's.

Raven Wright
Supervisor of Maps and Records
Department of Public Works
City Engineering Division
313-224-3985



CITY OF DETROIT
DEPARTMENT OF PUBLIC WORKS
CITY ENGINEERING DIVISION

COLEMAN A. YOUNG MUNICIPAL CENTER
2 WOODWARD AVE. SUITE 601
DETROIT, MICHIGAN 48226
PHONE: (313) 224-3949 TTY: 711
WWW.DETROITMI.GOV



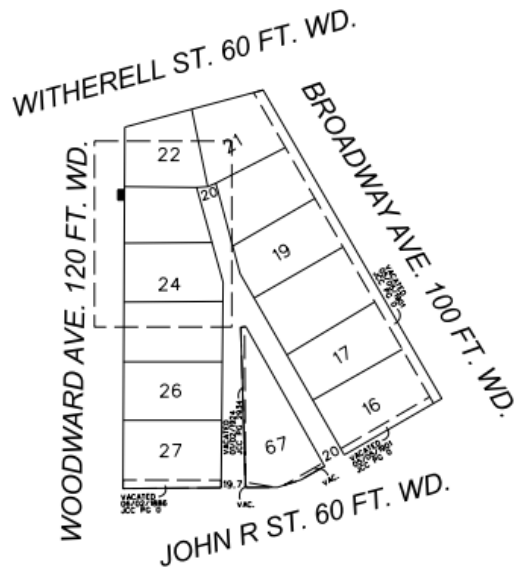
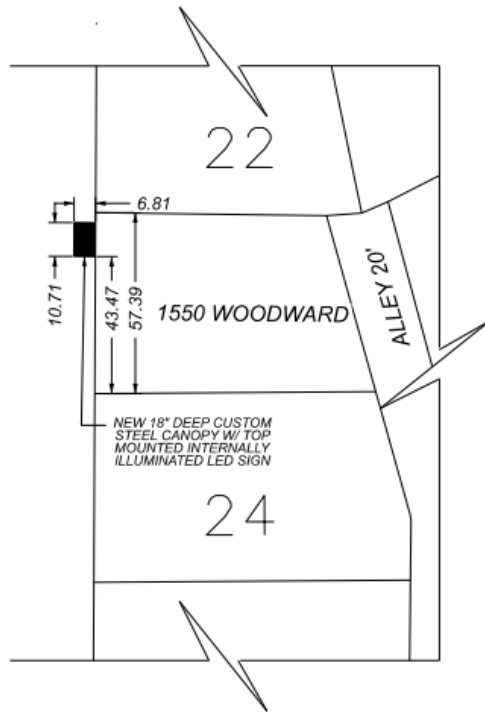
CITY OF DETROIT
 DEPARTMENT OF PUBLIC WORKS
 CITY ENGINEERING DIVISION


COLEMAN A. YOUNG MUNICIPAL CENTER
 2 WOODWARD AVE. SUITE 601
 DETROIT, MICHIGAN 48226
 PHONE: (313) 224-3949 TTY: 711
 WWW.DETROITMI.GOV

MAP-24-29



WOODWARD AVE. 120 FT. WD.



 - REQUEST ENCROACHMENT
 (FOR AN ILLUMINATED WALL SIGN,
 9.75' TO 11' ABOVE GRADE)

(FOR OFFICE USE ONLY)

CARTO 29 A

B					
A					
	DESCRIPTION	DRWN	CHEK	APPD	DATE
	REVISIONS				
	DRAWN BY	TS	CHECKED	AP	
	DATE	03-05-2024	APPROVED	JD	

REQUEST ENCROACHMENT
 INTO WOODWARD AVE.
 AT 1550 WOODWARD AVE.

CITY OF DETROIT CITY ENGINEERING DIVISION SURVEY BUREAU	
JOB NO.	24-29
DRWG. NO.	



CITY OF DETROIT
DEPARTMENT OF PUBLIC WORKS
CITY ENGINEERING DIVISION

COLEMAN A. YOUNG MUNICIPAL CENTER
2 WOODWARD AVE. SUITE 601
DETROIT, MICHIGAN 48226
PHONE: (313) 224-3949 TTY: 711
WWW.DETROITMI.GOV



DATE: 3/1/24
TO: City of Detroit
FROM: Kevin Deters
Metro Detroit Signs
RE: Gilly's wall sign
1550 Woodward Ave
SGN2024-00006

We are applying for an encroachment for an illuminated wall sign for "Gilly's" on the west elevation as follows:

Wall Sign SGN2024-00006 - Gilly's

- dimensions are 1.729' x 4.6' = 7.9 sq feet
- acrylic letters
- internally illuminated with LEDs
- on the west elevation facing Woodward Ave.
- 11 foot underclearance

Feel free to call me at (586)759-2700 if anything else is needed. Thank you for your assistance.

Kevin Deters 3-1-24




1/18/24, 2:56 PM

Google Maps



Site plan - Bldg is under Construction



 = Proposed wall sign for Gilly's on the West elevation

Map data ©2024, Map data ©2024 Google 20 ft

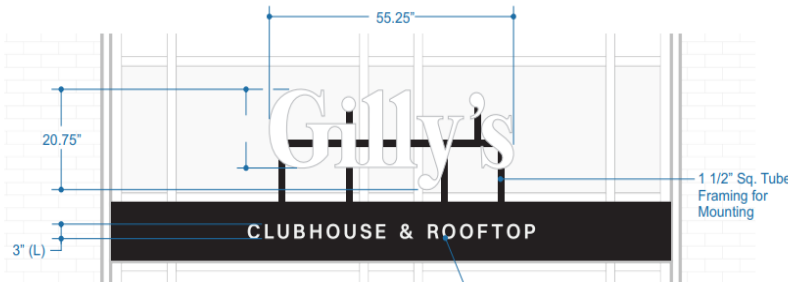


CITY OF DETROIT
 DEPARTMENT OF PUBLIC WORKS
 CITY ENGINEERING DIVISION

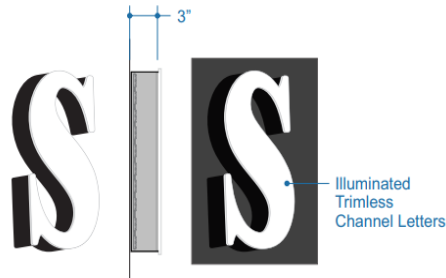
COLEMAN A. YOUNG MUNICIPAL CENTER
 2 WOODWARD AVE. SUITE 601
 DETROIT, MICHIGAN 48226
 PHONE: (313) 224-3949 TTY: 711
 WWW.DETROITMI.GOV

Trimless SGN2024-00006 - wall sign on the west elevation is 1.729' x 4.6' = 7.9 sq feet
 11' underclearance / west elevation is 33.416' high x 42' wide = 1,403.4 sq feet

SIGN DIMENSIONS
 20.75"x55.25" Overall - 7.96 Sq. Ft.



Canopy to be done by others



	Sales Person: Eric Ropelewski	Drawn By: Connie Fotiu	Date: 12/11/2023	File Name: Gilly's 232194.cdr Canopy Trimless Channel Letters Design03 Pg 2	Design03 Revision: XXX	 METRO DETROIT OFFICE 11444 Kallie Ave Warren, MI 48099 PHONE: 588-758-2700 WWW.METRODET.COM
	This drawing and design/layout is the property of Metro Detroit Signs. The use of which in part or in whole is not permitted without prior written consent from Metro Detroit Signs. All rights reserved. Copyright 2018 Customer Signature _____ Date _____				Production Status:	

