



CITY OF DETROIT  
DEPARTMENT OF PUBLIC WORKS  
CITY ENGINEERING DIVISION

COLEMAN A. YOUNG MUNICIPAL CENTER  
2 WOODWARD AVE. SUITE 601  
DETROIT, MICHIGAN 48226  
PHONE: (313) 224-3949 TTY: 711  
WWW.DETROITMI.GOV

---

To: Clerk's Office  
From: The Department of Public Works  
City Engineering Division  
MapsandRecordsBureau@DetroitMI.Gov  
(313) 224-3970

Petitioner:  
Bedrock 630 Woodward Ave.  
Detroit, Michigan, 48226

On behalf of the above-mentioned petitioner the Department of Public Works: City Engineering Division is submitting a petition request for the action below. The petitioner has received a project consultation from the Department of Public Works: City Engineering Division and has been advised the following:

Type of action recommended:

Petition for encroachment of five new awnings into the Washington Blvd right-of-way and two new awnings that encroach into the Grand River Ave. public right-of-way.

Raven Wright  
Supervisor of Maps and Records  
Department of Public Works  
City Engineering Division  
313-224-3985

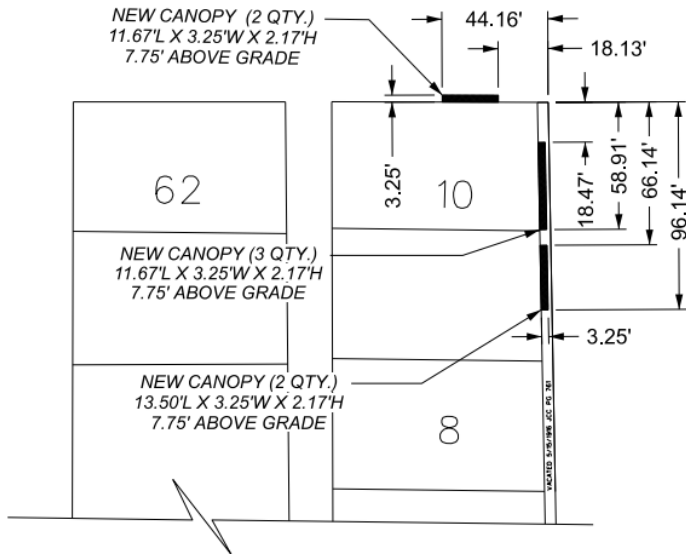


CITY OF DETROIT  
 DEPARTMENT OF PUBLIC WORKS  
 CITY ENGINEERING DIVISION

COLEMAN A. YOUNG MUNICIPAL CENTER  
 2 WOODWARD AVE. SUITE 601  
 DETROIT, MICHIGAN 48226  
 PHONE: (313) 224-3949 TTY: 711  
 WWW.DETROITMI.GOV

MAP-23-176

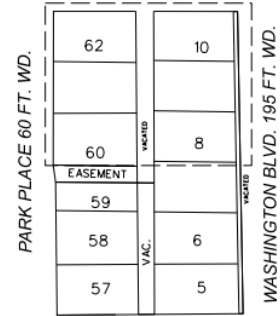
GRAND RIVER AVE. 60 FT. WD.




WASHINGTON BLVD. 195 FT. WD.



GRAND RIVER AVE. 60 FT. WD.



STATE ST. 60 FT. WD.

 - REQUEST ENCROACHMENT  
 (For Seven Above Grade Canopies)

(FOR OFFICE USE ONLY)

CARTO 28 B

<b>B</b>				
<b>A</b>				
DESCRIPTION	DESN	CHKD	APPD	DATE
REVISIONS				
DRAWN BY	AP	CHECKED	LC	
DATE	02-15-2024	APPROVED	JD	

REQUEST ENCROACHMENTS  
 AT 1249 WASHINGTON BLVD.

CITY OF DETROIT  
 CITY ENGINEERING DIVISION  
 SURVEY BUREAU  
 JOB NO. 23-176  
 DRWG. NO.



CITY OF DETROIT  
DEPARTMENT OF PUBLIC WORKS  
CITY ENGINEERING DIVISION

COLEMAN A. YOUNG MUNICIPAL CENTER  
2 WOODWARD AVE. SUITE 601  
DETROIT, MICHIGAN 48226  
PHONE: (313) 224-3949 TTY: 711  
WWW.DETROITMI.GOV



December 22, 2023

Honorable Detroit City Council  
C/o Detroit City Clerk  
200 Coleman A. Young Municipal Center  
2 Woodward Avenue  
Detroit, Michigan 48226

RE: Giffels Webster - Petition requesting encroachments of public rights-of-way.

Giffels Webster, 28 W. Adams, Suite 1200, Detroit, Michigan 48226 on behalf of Bedrock 630 Woodward Ave, Detroit, Michigan, 48226, respectfully requests the following above-grade encroachments into the public rights-of-way in the block bounded by Grand River Avenue (60 feet wide), Washington Boulevard (195 feet wide), State Street (35 feet wide), and the Public Ally (20 feet wide).

- Washington Blvd ○ Five (5) new awnings that encroach into the Washington Blvd public right-of-way. See plan for details.
- Grand River Ave ○ Two (2) new awnings that encroach into the Grand River Ave public right-of-way. See plan for details.

Please reference the attached Exhibit showing the encroachments for more information.

If you should have any questions, please do not hesitate to contact Leon Evans at (P) 313.962.4442 or at [levans@giffelswebster.com](mailto:levans@giffelswebster.com).

Respectfully,



CITY OF DETROIT  
DEPARTMENT OF PUBLIC WORKS  
CITY ENGINEERING DIVISION

COLEMAN A. YOUNG MUNICIPAL CENTER  
2 WOODWARD AVE. SUITE 601  
DETROIT, MICHIGAN 48226  
PHONE: (313) 224-3949 TTY: 711  
WWW.DETROITMI.GOV

---

*Leon Evans*

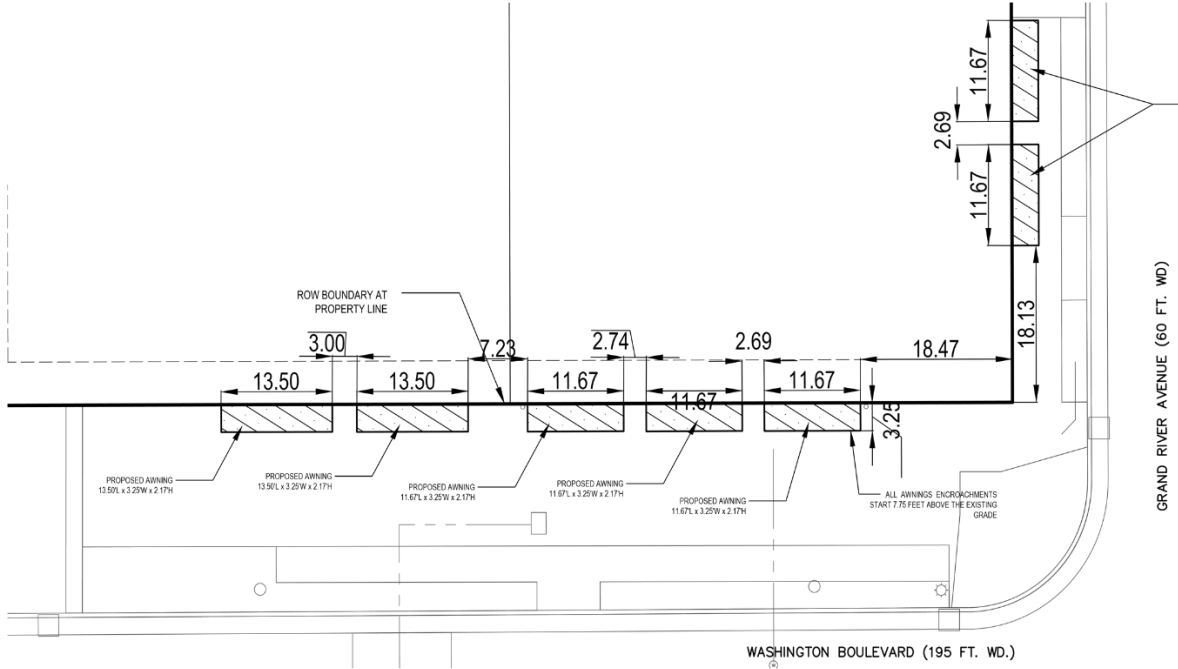
Leon Evans P.E.,  
Project Manager  
Giffels Webster

28 W. Adams, Suite 1200 | Detroit, Michigan 48226 | Phone (313) 962-4442 | Fax (313) 962-5068



CITY OF DETROIT  
DEPARTMENT OF PUBLIC WORKS  
CITY ENGINEERING DIVISION

COLEMAN A. YOUNG MUNICIPAL CENTER  
2 WOODWARD AVE. SUITE 601  
DETROIT, MICHIGAN 48226  
PHONE: (313) 224-3949 TTY: 711  
WWW.DETROITMI.GOV



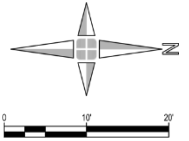
## ABOVE GRADE ENCROACHMENTS EX-5

PROJECT INFORMATION:  
BOOK DEVELOPMENT  
19574-050

THE PROJECT IS LOCATED ON THE BLOCK BOUND  
BY STATE ST., WASHINGTON BLVD., AND GRAND  
RIVER AVE.

THE PLAN ABOVE INCLUDES EXISTING ABOVE  
GRADE ENCROACHMENTS FOR THE AWINGS

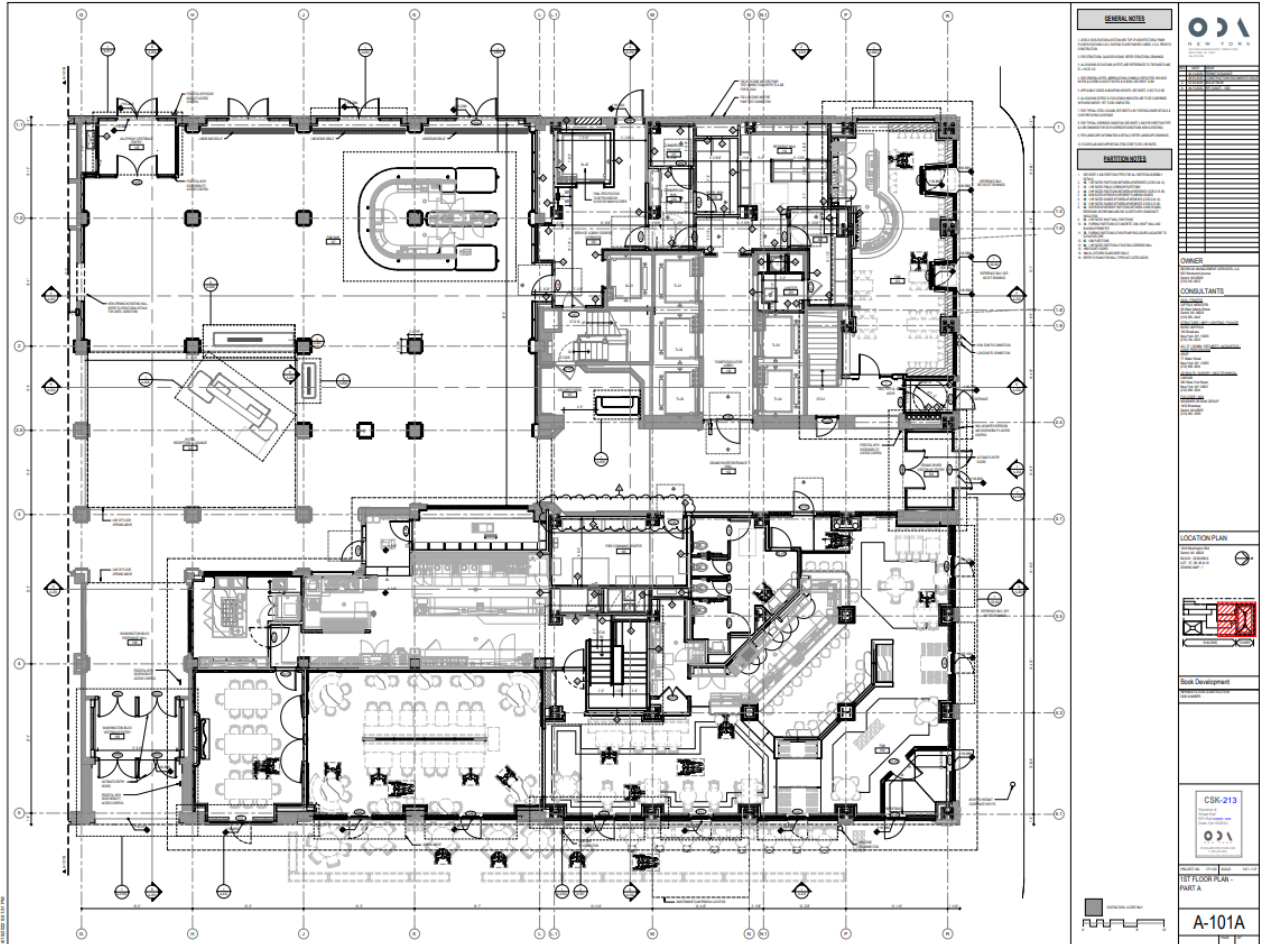
ENCROACHMENT EXHIBIT PREPARED BY:  
BYENS INDORELIRE  
313.962.4442  
12-18-2023





CITY OF DETROIT  
DEPARTMENT OF PUBLIC WORKS  
CITY ENGINEERING DIVISION

COLEMAN A. YOUNG MUNICIPAL CENTER  
2 WOODWARD AVE. SUITE 601  
DETROIT, MICHIGAN 48226  
PHONE: (313) 224-3949 TTY: 711  
WWW.DETROITMI.GOV





**CITY OF DETROIT**  
**DEPARTMENT OF PUBLIC WORKS**  
**CITY ENGINEERING DIVISION**

**COLEMAN A. YOUNG MUNICIPAL CENTER**  
**2 WOODWARD AVE. SUITE 601**  
**DETROIT, MICHIGAN 48226**  
**PHONE: (313) 224-3949 TTY: 711**  
**[WWW.DETROITMI.GOV](http://WWW.DETROITMI.GOV)**

---



CITY OF DETROIT  
DEPARTMENT OF PUBLIC WORKS  
CITY ENGINEERING DIVISION

COLEMAN A. YOUNG MUNICIPAL CENTER  
2 WOODWARD AVE. SUITE 601  
DETROIT, MICHIGAN 48226  
PHONE: (313) 224-3949 TTY: 711  
WWW.DETROITMI.GOV

## 219638 - Book Development - Mixed Use

**BRINKER | CHRISTMAN**  
A JOINT VENTURE

1201, 1249 and 1265 Washington Blvd.  
Detroit, Michigan  
United States

The Christman Company  
3633 Michigan Avenue  
Detroit, Michigan 48216  
United States

<b>Title</b> HP-Awnings-Product Data and Shop Drawings-resubmittal-Stamped drawings (FOR RECORD)	<b>Submittal Manager</b> Don Vercruysse
<b>Spec Section</b> HP-107313 - HP-Awnings	<b>Type</b> Shop Drawing
<b>Number</b> HP-107313-HP-1	<b>Rev</b> 3

**Description**  
HP-Awnings-Product Data and Shop Drawings

**BRINKER | CHRISTMAN**  
A JOINT VENTURE

REVIEWED       REVISE / RESUBMIT

Comments or comments made on the shop drawings during this review do not release contractor from compliance with requirements of the drawings and specifications. This check is only for review of the general conformance with the design concept of the project and general compliance with the information given in the contract documents. The contractor is responsible for: Confirming and correlating all quantities and dimensions, selecting fabrications and techniques of construction, coordinating his or her work with that of other trades and submission of work to a safe and satisfactory manner.

SUBMITTAL #: **HP-107313-1.3**

DATE: **9/16/22** BY: **Don Vercruysse**

Approved  
 Approved As Noted  
 Approved As Noted Submit Revisions for Record  
 Revise & Resubmit  
 Rejected  
 Incomplete Submittal  
 Received for Record

Checking is only for conformance with the design concept of the project and with the information given in the contract documents. The contractor is responsible for dimensions to be confirmed and correlated at the job site; for information that pertains solely to the fabrication processes or techniques of construction; and for coordination of the work of all trades.

  
W: ODA-ARCHITECTURE.COM  
T: 646-478-7455

**Reviewed By:**  
ckramblas  
**Date:**  
09/26/2022

99 Hudson Street, 2nd FL, New York, NY 10013

**ODA Response**

We need to increase the valence depth to accommodate signage. Please increased depth of L-Frame to 6" per sketch below.



